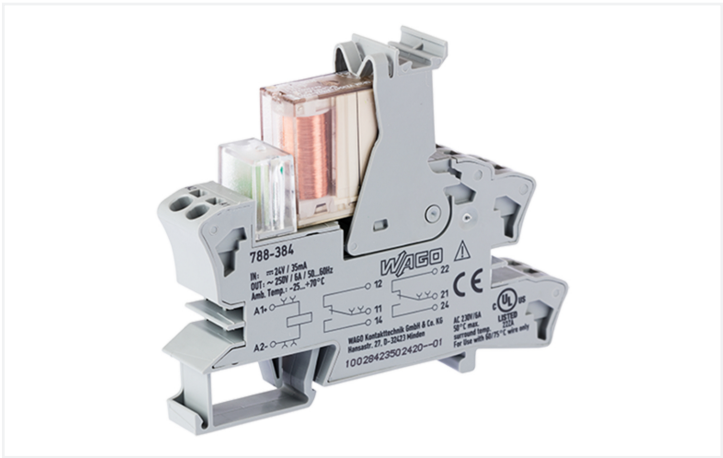


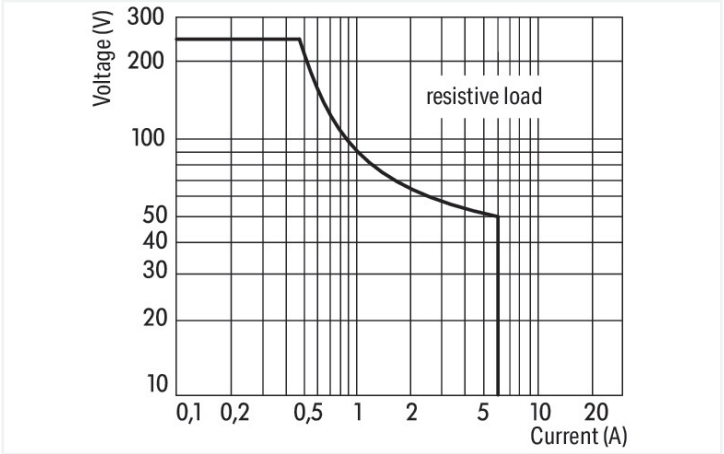
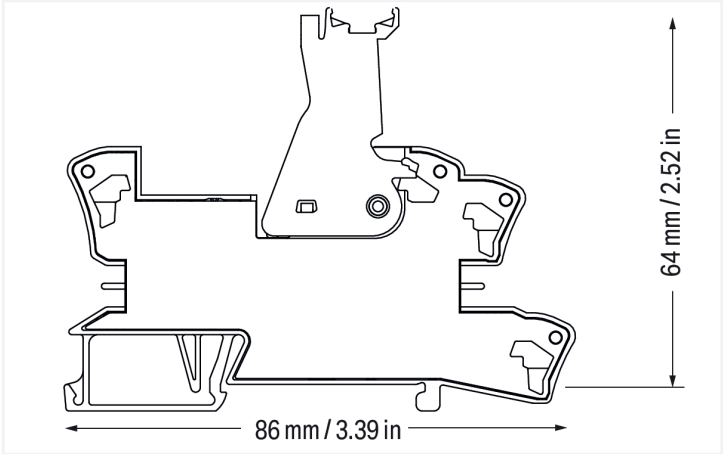
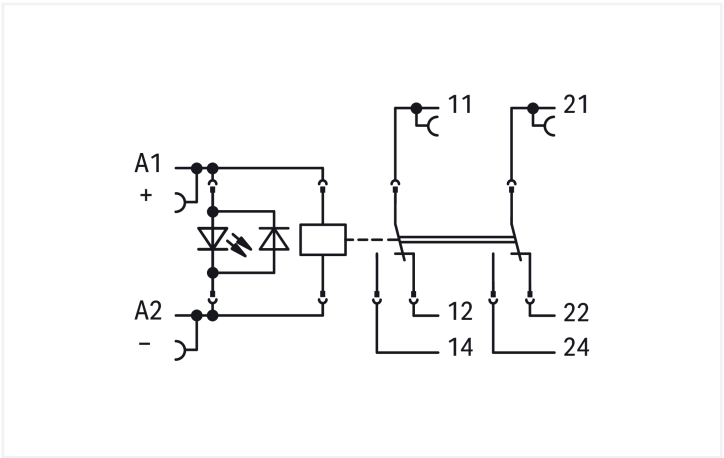
Data Sheet | Item Number: 788-384

Relay module with driven contacts; Nominal input voltage: 24 VDC; 2 changeover contacts; Limiting continuous current: 6 A; Red status indicator; Module width: 15 mm; 2,50 mm²; gray

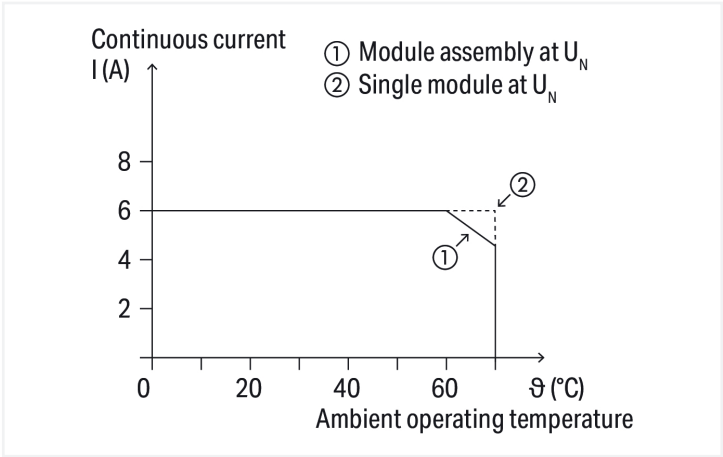
<https://www.wago.com/788-384>



Color: ■ gray



DC load limit curve



Current-carrying capacity curve



Notes	
Safety Information	Per EN 61810-3, it is only permitted to use 1 make contact/1 break contact for safety circuits (11-14 and 22-21 or 12-11 and 21-24). A separator plate (e.g., 209-191) must be used for voltages greater than 250 V between adjacent relay modules and for compliance with the reinforced insulation requirements.
Note	Reinforced insulation between coil and contacts To protect the relay coils and contacts, inductive loads must be dampened with an effective protection circuit.

Technical data	
Control circuit	Load circuit
Nominal input voltage U _N	24 VDC
Input voltage range	-15 ... +10 %
Nominal input current at U _N	31 mA
	Number of changeover/switchover contacts
	2
	Contact material (relay)
	AgNi
	Limiting continuous current
	6 A
	Inrush current (resistive) max.
	(AC) 14 A / 4 s
	Switching Voltage, Max.
	250 VAC
	Switching power (resistive) max.
	AC 1500 VA; DC (see load limit curve)
	Switching capacity
	AC-15: 3 A / 250 VAC; DC-13: 3 A / 24 VDC
	Recommended minimum load
	5 V / 10 mA
	Pull-in time (typ.)
	10 ms
	Drop-out time (typ.)
	4 ms
	Electrical life (NO; resistive load; 23 °C)
	100 x 10 ³ switching operations
	Mechanical life
	10 x 10 ⁶ switching operations
	Switching frequency with/without load (max.)
	6 min ⁻¹ / 300 min ⁻¹
	Mechanical force-guided operation
	Type A

Signaling	
Status indicator	Red LED

Safety and protection	
Rated Voltage	250 V
Rated impulse withstand voltage	6 kV
Pollution degree	3
Dielectric strength (control/load circuit) (AC, 1 min)	4 kVrms
Dielectric strength (open contact) (AC, 1 min)	1.5 kVrms
Dielectric strength (load/load circuit) (AC, 1 min)	3 kVrms
Safety Information	Per EN 61810-3, it is only permitted to use 1 make contact/1 break contact for safety circuits (11-14 and 22-21 or 12-11 and 21-24). A separator plate (e.g., 209-191) must be used for voltages greater than 250 V between adjacent relay modules and for compliance with the reinforced insulation requirements.
B10d (AC 1)	250 V; 6 A; 1 NO: 600,000 switching operations 250 V; 3 A; 1 NO: 900,000 switching operations 250 V; 1.5 A; 1 NO: 1,800,000 switching operations
B10d (15 AAC)	250 V; 3 A; 1 NO: 180,000 switching operations 250 V; 2 A; 1 NO: 560,000 switching operations 250 V; 0.75 A; 1 NO: 4,600,000 switching operations
B10d (DC 13)	24 V; 3 A; 1 NO: 360,000 switching operations 24 V; 1.5 A; 1 NO: 740,000 switching operations 24 V; 0.75 A; 1 NO: 4,200,000 switching operations
Protection type	IP20



Connection data	
Connection technology	Push-in CAGE CLAMP®
Solid conductor	0.34 ... 2.5 mm² / 22 ... 14 AWG
Fine-stranded conductor	0.34 ... 2.5 mm² / 22 ... 14 AWG
Strip length	9 ... 10 mm / 0.35 ... 0.39 inches

Physical data	
Width	15 mm / 0.591 inches
Height	86 mm / 3.386 inches
Depth from upper-edge of DIN-rail	64 mm / 2.52 inches

Mechanical data	
Mounting type	DIN-35 rail

Material data	
Note (material data)	Information on material specifications can be found here
Color	gray
Fire load	0.948 MJ
Weight	50.3 g

Environmental requirements	
Ambient temperature (operation at U _N)	-40 ... +70 °C
Ambient temperature UL (operation at U _N)	-40 ... +50 °C
Ambient temperature (storage)	-40 ... +70 °C
Processing temperature	-25 ... +50 °C
Temperature range of connection cable	≥ (T _{ambient} + 20 K)

Standards and specifications	
Standards/specifications	EN 61010-2-201 EN 61810-1 EN 61810-3 EN 61373 UL 508


Basic relay	
WAGO Basic Relay	788-902


Commercial data	
Product Group	6 (INTERFACE ELECTRONIC)
PU (SPU)	15 (1) pcs
Packaging type	Box
Country of origin	CN
GTIN	4055143184175
Customs tariff number	85364900990



Product classification	
UNSPSC	39122334
eCl@ss 10.0	27-37-16-01
eCl@ss 9.0	27-37-16-01
ETIM 9.0	EC001437
ETIM 8.0	EC001437
ECCN	NO US CLASSIFICATION

Environmental Product Compliance	
RoHS Compliance Status	Compliant,No Exemption

Approvals / Certificates											
General approvals		Declarations of conformity and manufacturer's declarations									
											
Approval	Standard	Certificate Name									
EAC GZO Almaty Standart	TP TC 004/2011	EAC CoC 03084									
UL Underwriters Laboratories Inc. (ORDINARY LOCATIONS)	UL 508	E175199 Vol.1 Sec.6									
		<table><tr><th>Approval</th><th>Standard</th><th>Certificate Name</th></tr><tr><td>EU-Declaration of Conformity WAGO GmbH & Co. KG</td><td>-</td><td>-</td></tr><tr><td>UK-Declaration of Conformity WAGO GmbH & Co. KG</td><td>-</td><td>-</td></tr></table>	Approval	Standard	Certificate Name	EU-Declaration of Conformity WAGO GmbH & Co. KG	-	-	UK-Declaration of Conformity WAGO GmbH & Co. KG	-	-
Approval	Standard	Certificate Name									
EU-Declaration of Conformity WAGO GmbH & Co. KG	-	-									
UK-Declaration of Conformity WAGO GmbH & Co. KG	-	-									

Downloads	
Environmental Product Compliance	
Compliance Search	
Environmental Product Compliance 788-384	

Documentation				
Bid Text			Instruction Leaflet	
788-384	25.01.2019	docx 17.54 KB	↓	<div>Sockets with Elementa- ry Relay/ SSR</div> <div>V 1.0.1 09.10.2020</div> <div>pdf 2271.22 KB</div> <div>↓</div>
788-384	19.02.2019	xml 5.36 KB	↓	



CAD/CAE-Data	
CAD data	CAE data
2D/3D Models 788-384	EPLAN Data Portal 788-384
	WSCAD Universe 788-384
	ZUKEN Portal 788-384

1 Compatible Products
1.1 Optional Accessories
1.1.1 Basic relay
1.1.1.1 Basic relay



[Item No.: 788-902](#)
Basic relay; Nominal input voltage: 24 VDC; 2 changeover contacts

1.1.2 Ferrule
1.1.2.1 Ferrule



[Item No.: 216-241](#)
Ferrule; Sleeve for 0.5 mm² / 20 AWG; insulated; electro-tin plated; electrolytic copper; gastight crimped; acc. to DIN 46228, Part 4/09.90; white



[Item No.: 216-242](#)
Ferrule; Sleeve for 0.75 mm² / 18 AWG; insulated; electro-tin plated; electrolytic copper; gastight crimped; acc. to DIN 46228, Part 4/09.90; gray



[Item No.: 216-243](#)
Ferrule; Sleeve for 1 mm² / AWG 18; insulated; electro-tin plated; electrolytic copper; gastight crimped; acc. to DIN 46228, Part 4/09.90; red



[Item No.: 216-244](#)
Ferrule; Sleeve for 1.5 mm² / AWG 16; insulated; electro-tin plated; electrolytic copper; gastight crimped; acc. to DIN 46228, Part 4/09.90; black



[Item No.: 216-542](#)
Twin ferrule; Sleeve for 2 x 1 mm² / AWG 2 x 18; red, insulated; 12 mm long; red

1.1.3 Indicators
1.1.3.1 Status indication



[Item No.: 788-120](#)
Accessories for relay modules; Operation status indicator: red; Nominal operating voltage: 24 VDC



1.1.4 Jumper

1.1.4.1 Jumper



Item No.: 788-118
Jumper; for jumper slot; 2-way; from 1 to 3; insulated; light gray



Item No.: 788-113
Jumper; for jumper slot; 2-way; insulated; light gray



Item No.: 859-402
Jumper; for jumper slot; 2-way; insulated; light gray



Item No.: 788-114
Jumper; for jumper slot; 3-way; insulated; light gray



Item No.: 788-115
Jumper; for jumper slot; 4-way; insulated; light gray



Item No.: 788-116
Jumper; for jumper slot; 6-way; insulated; light gray



Item No.: 788-117
Jumper; for jumper slot; 8-way; insulated; light gray

1.1.5 Marking

1.1.5.1 Double marker carrier



Item No.: 209-128
Adaptor; gray

1.1.5.2 Group marker carrier



Item No.: 249-105
Group marker carrier; gray



Item No.: 209-145
Group marker carrier; white

1.1.5.3 Marker



Item No.: 209-183
Marker; white



Item No.: 793-502
WMB marking card; as card; MARKED; 1 ... 10 (10x); not stretchable; Horizontal marking; snap-on type; white



Item No.: 793-503
WMB marking card; as card; MARKED; 11 ... 20 (10x); not stretchable; Horizontal marking; snap-on type; white



Item No.: 793-504
WMB marking card; as card; MARKED; 21 ... 30 (10x); not stretchable; Horizontal marking; snap-on type; white



Item No.: 793-505
WMB marking card; as card; MARKED; 31 ... 40 (10x); not stretchable; Horizontal marking; snap-on type; white



Item No.: 793-501
WMB marking card; as card; not stretchable; plain; snap-on type; white



Item No.: 2009-115
WMB-Inline; for Smart Printer; 1500 pieces on roll; stretchable 5 - 5.2 mm; plain; snap-on type; white

1.1.5.4 Marking device



Item No.: 210-110
Fiber-tip pen

1.1.5.5 Marking strip



Item No.: 2009-110
Marking strips; for Smart Printer; on reel;
not stretchable; plain; snap-on type; white

1.1.5.6 Protective marker cover



Item No.: 209-184
Protection cover; transparent

1.1.6 Tool

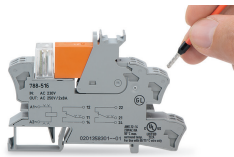
1.1.6.1 Operating tool



Item No.: 210-720
Operating tool; Blade: 3.5 x 0.5 mm; with a
partially insulated shaft; multicoloured

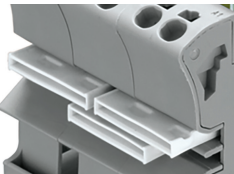
Installation Notes

Conductor termination



Conductor termination

Commoning



Easy commoning using adjacent jumpers

Marking



Marking using WMB Multi markers and
group marker carriers.

Subject to changes. Please also observe the further product documentation!

Current addresses can be found at: www.wago.com