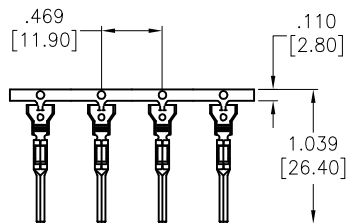


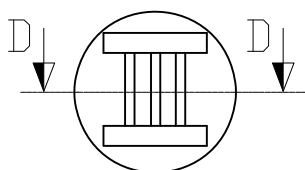
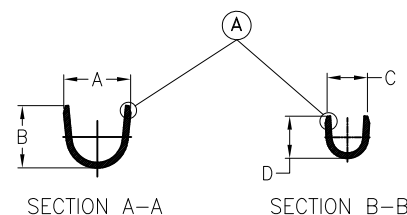
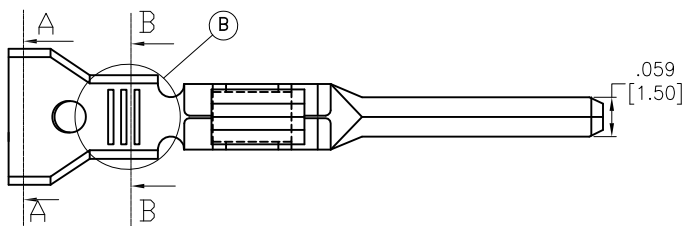
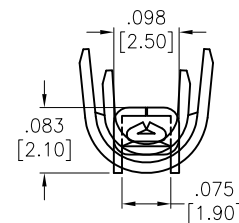
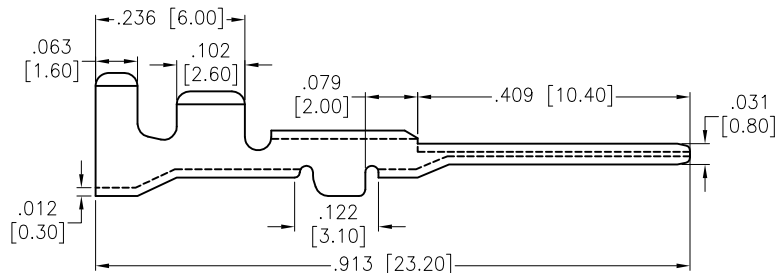
APPROVED: _____

DATE: _____ TITLE: _____

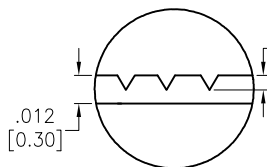
Rev	AWO #	Description	Date	Appr
-		RELEASED	11/15/24	



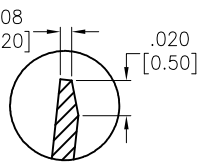
Direction of Unwinding from spool



DETAIL B



SECTION D-D



DETAIL A

NOTE:
FOR USE WITH MALE CONNECTOR HOUSING P/N: DMB-DMSSXX

SPECIFICATIONS:

Material: Phosphor Bronze, Thickness: 0.3 mm

Plating:

Tin over Nickel underplate overall

Electrical:

Voltage rating: 250V AC/DC max

Current rating: 5 Amp, 22 (0.35mm²) Awg

8 Amp, 20 (0.50mm²) Awg

11 Amp, 18 (0.75mm²) Awg

18 Amp, 15 (1.50mm²) Awg

Contact resistance: 3 mohms max

Dielectric strength: 1.5KV AC

Mechanical:

Terminal Insertion Force Into Coupler: 1.50Kg MAX

Terminal Withdrawal Force From Coupler: 6.00Kg MAX

Temperature Rating:

Operating temperature: -40°C to +125°C

Environmental:

Lead free, RoHS compliant



ADAM P/N	Wire range Awg (mm ²)	Dim A	Dim B	Dim C	Dim D
DMB-DMSSC-1-R	22~20 (0.35~0.5)	.185 [4.70]	.197 [5.00]	.079 [2.00]	.079 [2.00]
DMB-DMSSC-2-R	18~15 (0.75~1.5)	.185 [4.70]	.197 [5.00]	.118 [3.00]	.134 [3.40]
DMB-DMSSC-3-R	16~14 (1.5~2.5)	.205 [5.20]	.185 [4.70]	.142 [3.60]	.150 [3.80]

(Dim A, B, C, D TOLERANCES: ±.016 [0.40])

UNLESS OTHERWISE SPECIFIED ALL DIMENSIONS
ARE INCHES [MM]. TOLERANCES: EXCEPT AS NOTED

INCHES	HOLES
.X ±.10	Ø.X ±.10
.XX ±.020	Ø.XX ±.015
.XXX ±.015	Ø.XXX ±.010

DRAWN	WY	11/15/24
CHECKED	RC	11/15/24
APPROVED		

THIS DRAWING CONTAINS INFORMATION THAT IS PROPRIETARY
AND SHOULD NOT BE USED WITHOUT PRIOR WRITTEN
PERMISSION FROM ADAM TECH

**ADAM
TECH**

909 Rahway Avenue,
Union, NJ 07083
Phone: 908-687-5000
Fax: 908-687-5710

TITLE
SECUR-SEAL 6.0MM PITCH, WIRE TO WIRE, MALE
TERMINAL, IP67 SEALED CONNECTOR

SIZE X	PART NO. DMB-DMSSC-X-R	REV. -
REF: -	SCALE: NTS	SHEET 1 OF 1