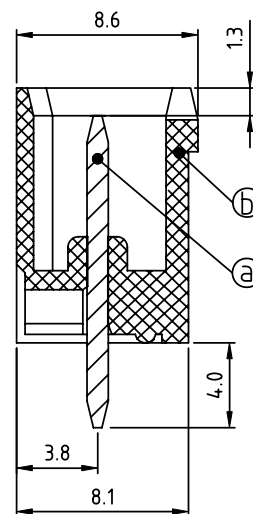
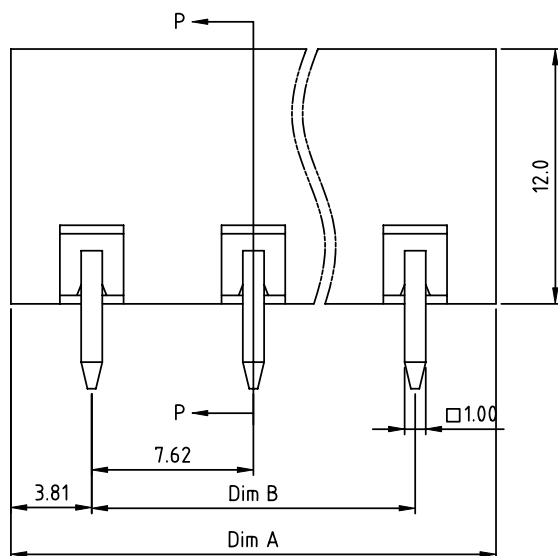
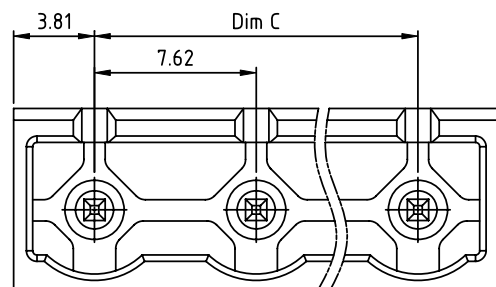


PRODUCT NUMBER

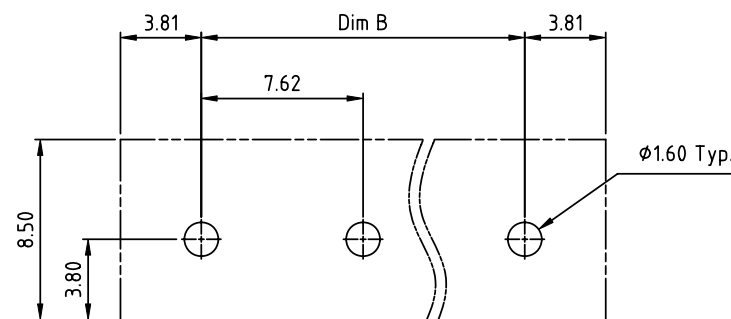
PITCH

0Qxx01x000J0G

7.62 mm





SECTION P-P

RECOMMENDED P.C.B LAYOUT
TOP VIEW

Material:

- Item ③ Male contact pin : Copper Tin plated
- Item ④ Terminal housing: Thermoplastic (UL94 V-0)

- Electrical:
- | | | |
|--------------------------|---|---|
| | cULus | TUV |
| ● Voltage rating: | 300V | 750V |
| ● Current rating: | 20A | 15A |
| ● Withstanding Voltage: | 1.6 KV | 6KV |
| ● Operating temperature: | -40°C to +115°C | |
| ● Soldering temperature: | 260°C±5°C/5 Sec | |
| ● Safety Approval: |  |  |

DIMENSION

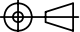


Dim A	NX7.62
Dim B&C	(N-1)X7.62

N= Number of poles

Poles	Tolerance
2P-6P	±0.20
7P-12P	±0.30
13P-16P	±0.40

PART NO.: 0Q xx 0 1 x 0 00J0 G

No. of poles	Body Color	RoHS compliant
02 2 poles	0 Black (RAL9005)	(lead<4%)
03 3 poles	2 Red (RAL3001/D)	In copper Alloy
...	3 Orange(RAL2011/P)	
16 16 poles	4 Yellow(RAL1018/A)	
	5 Green(RAL6018/T)	
	6 Blue (RAL5015/A)	
	8 Grey(RAL7035/D)	
	9 White(RAL1102)	
	C Green(RAL6018/U)	

mat'l. code				surface ASME Y14.5		tolerance ASME Y14.5		projection 		product family TERMINAL BLOCK					
ltr ecn no dr date				tolerances unless otherwise specified						title					
				angles <div>lineal</div>		X.±0.5				TERMINAL BLOCK					
						X.X±0.3				PLUGGABLE SOCKET,CLOSE,VERTICAL					
						X'.XX±0.1				scale					
				dr		HANKE FENG		040414		dwg no		sheet 1 of 1		size	
				engr		HANKE FENG		040414				0Qxx01x000J0G		A	
				chr		SHI JUN		040414							
				appd		SHI JUN		040414				type		CUSTOMER Drawing	
sheet index		revision sheet		A 1											