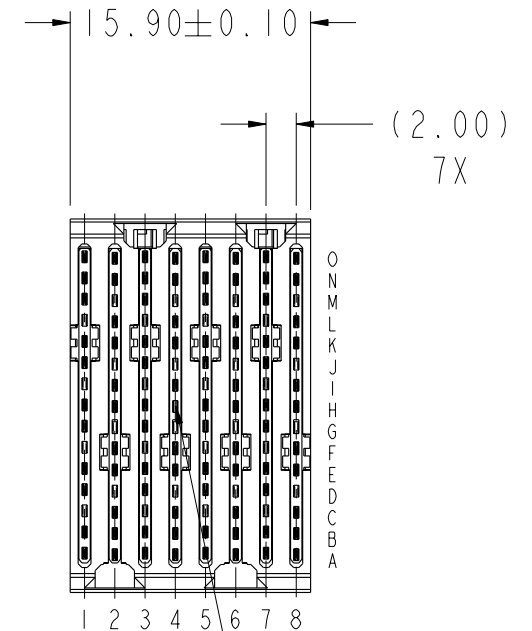
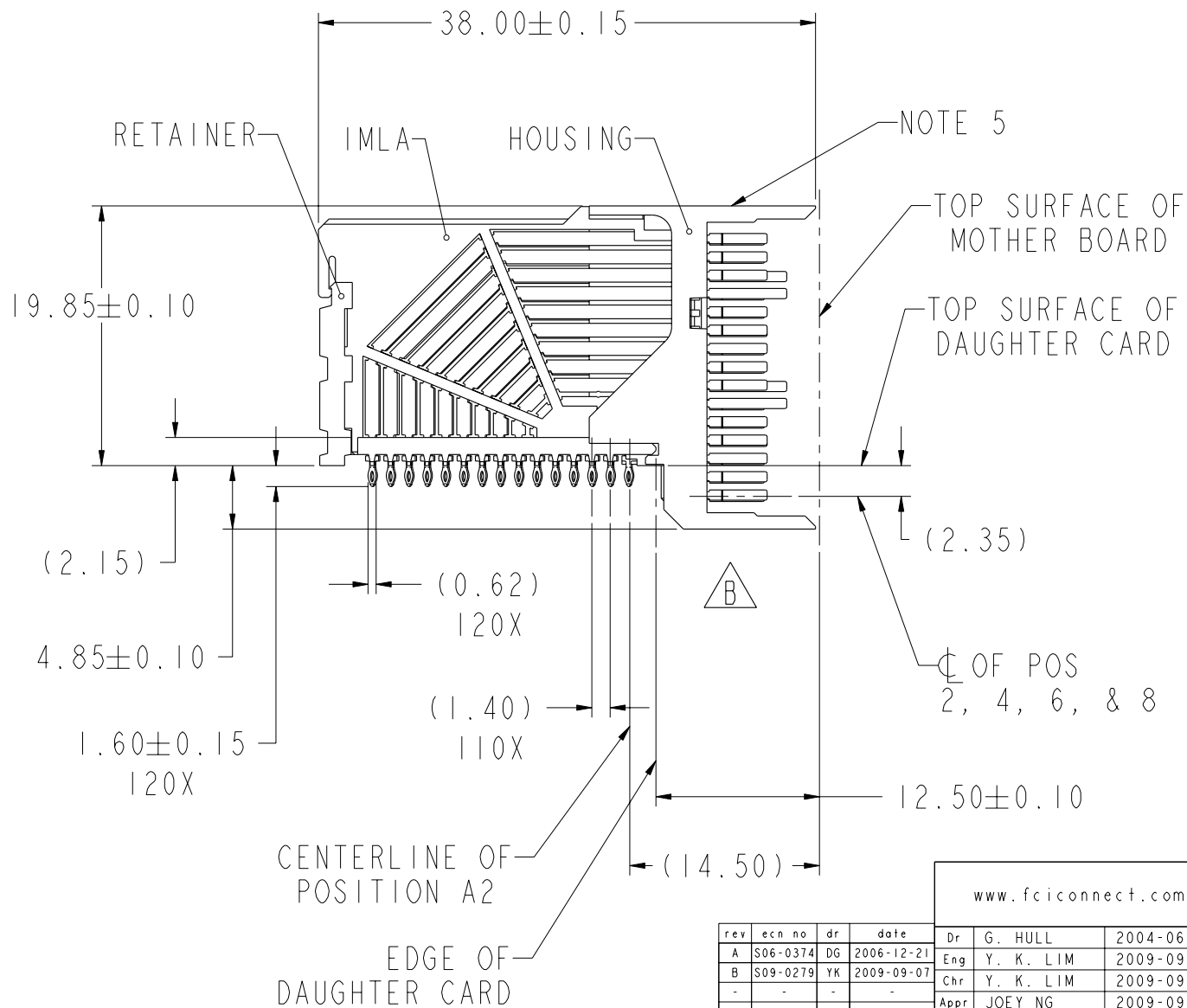


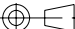
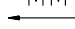



Copyright FCI.

PRODUCT NUMBER
SEE TABLE, SHEET 5



rev	ecn no	dr	date
A	S06-0374	DG	2006-12-21
B	S09-0279	YK	2009-09-07
-	-	-	-
-	-	-	-
-	-	-	-
-	-	-	-
-	-	-	-

www.fciconnect.com			surface 3.2 ASME Y14.5		tolerance std ASME Y14.5		projection 		 MM			
			TOLERANCES UNLESS OTHERWISE SPECIFIED									
Dr	G. HULL	2004-06-11	ANGULAR		LINEAR		0.X		±		size A4	Scale 2:1
Eng	Y. K. LIM	2009-09-07					0.XX		±			
Chr	Y. K. LIM	2009-09-07	0°		±°		0.XXX		±		ECN	S09-0279
Appr	JOEY NG	2009-09-07	Product family AirMax VS					Spec ref				
			title AirMax VS R/A HEADER ASSY PRESS-FIT, 120 POS, 16MM				dwg no 10041746				Rev. B	
			catalog no				CUSTOMER				sheet 1 of 5	

REV F - 2006-04-17

PDM: Rev:B

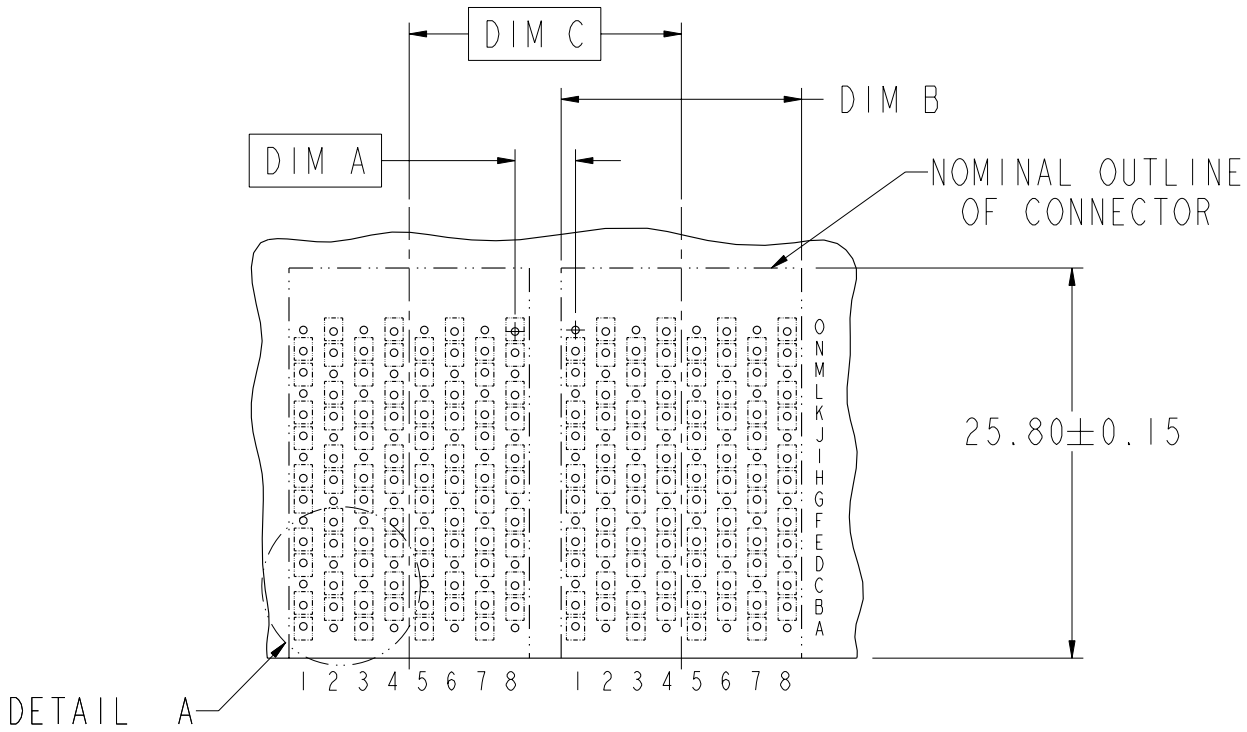
STATUS:Released

4Printed: Dec 01, 2010




Copyright FCI.

DESCRIPTION	DIM A	DIM B	DIM C
2-16MM MODULES PLACED END-TO-END	2.00	15.90 2X	16.00
1-16MM MODULE & 1-18MM MODULE PLACED END-TO-END	3.00	15.90 1X & 17.90 1X	17.00



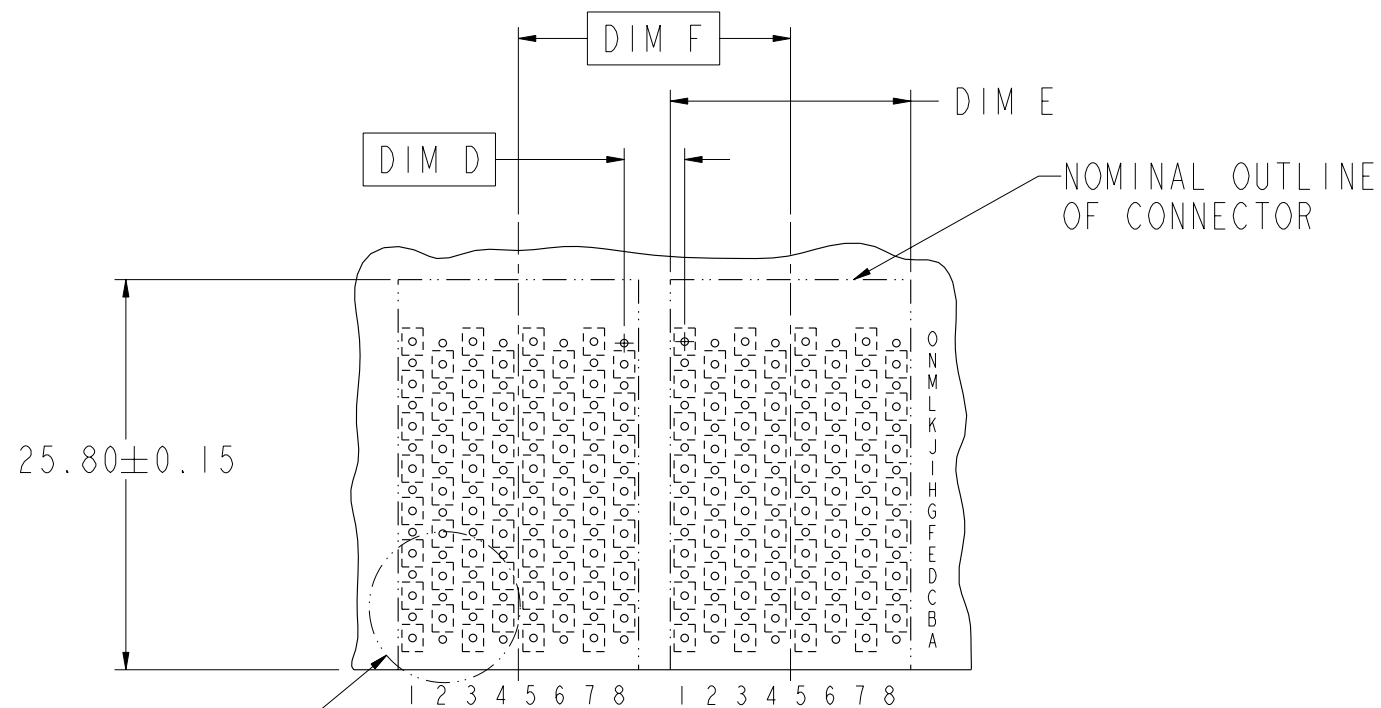
RECOMMENDED PCB LAYOUT
FOR DIFFERENTIAL APPLICATIONS
COMPONENT SIDE
(TWO ADJACENT FOOTPRINTS SHOWN)
NOTES 6 & 7

	title	AirMax VS R/A HEADER ASSY		dwg no	10041746		Rev.	B
		PRESS-FIT, 120 POS, 16MM						
	catalog no	-			CUSTOMER		sheet 2 of 5	




Copyright FCI.

DESCRIPTION	DIM D	DIM E	DIM F
2-16MM MODULES PLACED END-TO-END	2.00	15.90 2X	16.00
1-16MM MODULE & 1-18MM MODULE PLACED END-TO-END	3.00	15.90 1X & 17.90 1X	17.00



RECOMMENDED PCB LAYOUT
FOR SINGLE ENDED APPLICATIONS
COMPONENT SIDE
(TWO ADJACENT FOOTPRINTS SHOWN)
NOTES 6 & 7

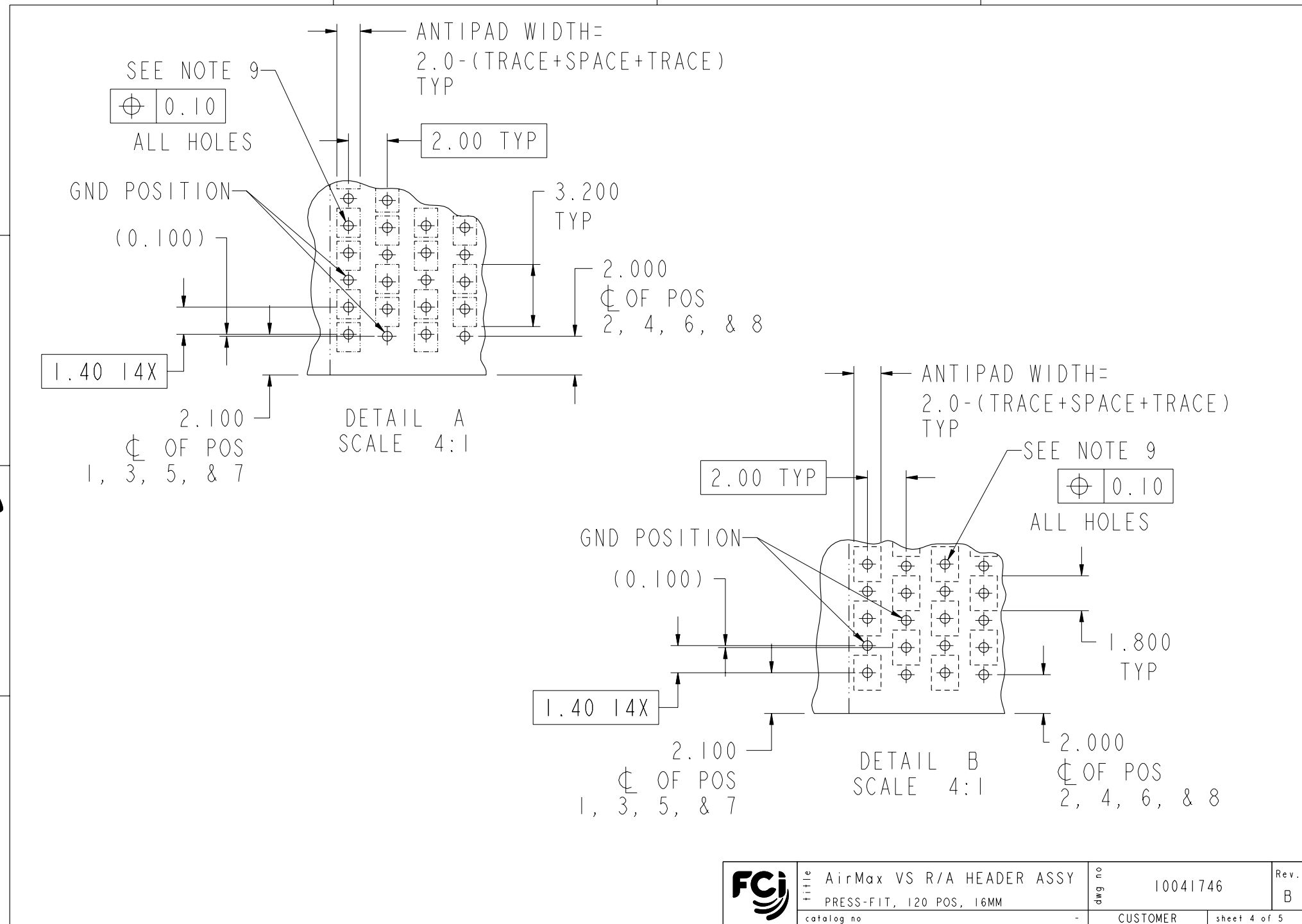
	title	AirMax VS R/A HEADER ASSY		dwg no	10041746		Rev. B
		PRESS-FIT, 120 POS, 16MM					
	catalog no	-		CUSTOMER		sheet 3 of 5	

REV F - 2006-04-17



Copyright FCI.

REV F - 2006-04-17



	title		dwg no	Rev.
	AirMax VS R/A HEADER ASSY PRESS-FIT, 120 POS, 16MM		10041746	B
catalog no	-	CUSTOMER	sheet 4 of 5	



Copyright FCI.

A

B


C

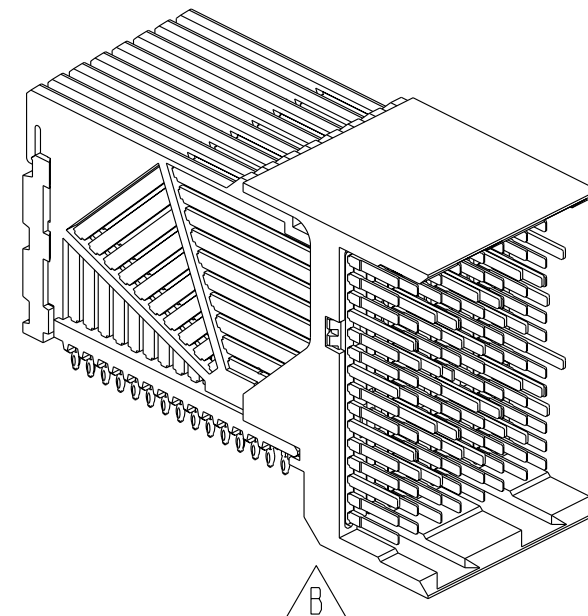
D

PART NUMBER	PRESS-FIT TAIL PLATING TYPE	SHORT DETECT CONTACT
10041746-101	TIN/LEAD ALLOY OVER NICKEL	NO
10041746-101LF	TIN OVER NICKEL (LEAD FREE)	
10041746-111	TIN/LEAD ALLOY OVER NICKEL	YES (SEE NOTE 13)
10041746-111LF	TIN OVER NICKEL (LEAD FREE)	

NOTES:

1. CONNECTOR MATERIALS:
HOUSING & RETAINER: HIGH TEMP THERMOPLASTIC, NATURAL, UL94V-0
IMLA PLASTIC: HIGH TEMP THERMOPLASTIC, BLACK, UL94V-0
CONTACT: COPPER ALLOY
2. CONTACT PLATING:
SEPARABLE INTERFACE:
PERFORMANCE-BASED PLATING, QUALIFIED TO MEET THE REQUIREMENTS OF FCI PRODUCT SPECIFICATION GS-12-239 INCLUDING TELCORDIA GR-1217-CORE (NOVEMBER 1995) CENTRAL OFFICE TEST SEQUENCE

PRESS-FIT TAILS: SEE TABLE
3. PRODUCT SPECIFICATION: GS-12-239
4. APPLICATION SPECIFICATION: GS-20-035
5. PRODUCT MARKING, (PART NUMBER & LOT CODE), ON THIS SURFACE
6. REFER TO CUSTOMER DRAWING 10035911 FOR INFORMATION REGARDING PCB LAYOUT OF POWER AND GUIDE MODULES RELATIVE TO SIGNAL MODULES
7. POSITIONS F AND L OF ODD NUMBERED COLUMNS AND POSITIONS G AND M OF EVEN NUMBERED COLUMNS CORRESPOND TO EARLY MATE HEADER PINS
8. THERE IS NO GROUND BUSSING WITHIN THE CONNECTOR SYSTEM
9. REFER TO CUSTOMER DRAWING 10045979 FOR INFORMATION ON PCB HOLE DIAMETERS AND PLATING OPTIONS.
10. LEAD FREE PRODUCT MEETS EUROPEAN UNION DIRECTIVES & OTHER COUNTRY REGULATIONS AS DESCRIBED IN GS-22-008.
11. THE HOUSING WILL WITHSTAND EXPOSURE TO 260°C PEAK TEMPERATURE FOR 40 SECONDS IN A CONVECTION, INFRA-RED OR VAPOR PHASE REFLOW OVEN.
12. PACKAGING MEETS GS-14-920 LEAD FREE LABELING SPECIFICATION.
13. MATING PIN H4 HAS 0.5mm LESS WIPE THAN THE SHORTEST SIGNAL PIN.
14. A  SYMBOL WILL BE NEXT TO ANY DIMENSION, VIEW, OR NOTE WHICH HAS BEEN MODIFIED WITH THE CURRENT DRAWING REVISION.



A

B

C

D



title	AirMax VS R/A HEADER ASSY	dwg no	10041746	Rev.	B
catalog no	-	CUSTOMER	sheet 5 of 5		