



Part Number : [1053101108](#)

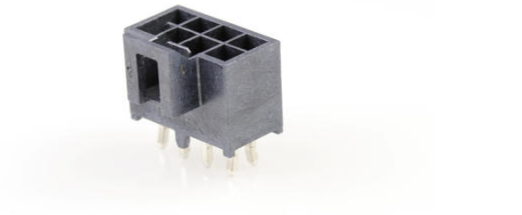
Product Description : Nano-Fit Vertical Header, Through Hole, 2.50mm Pitch, Dual Row, 8 Circuits, with Kinked Pins, Tin (Sn) Plating, Black, Glow-Wire Capable, Tray

Series Number : 105310

Status : Active

Product Category : PCB Headers and Receptacles

Packaging Alternative : [1053103508](#) (Embossed Tape on Reel)



Documents and Resources

Drawings

[1053101108 sd.pdf](#)

[PK-105309-100-000.pdf](#)

3D Models and Design Files

[STEP AP242](#)

[SOLIDWORKS](#)

[Creo](#)

[Symbol and Footprint \(Multi-Format\)](#)

[SYM-105310-XX08-001.zip](#)

Specifications

[AS-105300-100-001.pdf](#)

[1722990000-AS-000.pdf](#)

[1053001000-PS-CH-000.pdf](#)

[1053001000-PS-ES-000.pdf](#)

[1053001000-PS-JP-000.pdf](#)


[1053001000-PS-SK-000.pdf](#)

[PS-105300-100-001.pdf](#)

[1053001000-TS-000.pdf](#)

Product Environment Compliance

Compliance

| | |
|--------------------|---|
| GADSL/IMDS | Compliant with Exemption 44; 33 |
| China RoHS |  per SJ/T 11365-2006 |
| EU ELV | Not Relevant |
| Low-Halogen Status | Low-Halogen per IEC 61249-2-21 |
| REACH SVHC | Not Contained per D(2025)7771-DC (04 Feb 2026) |
| EU RoHS | Compliant per EU 2015/863 |

Compliance Statements

- EU RoHS
- REACH SVHC
- Low-Halogen

Industry Documents

- IPC 1752A Class C
- IPC 1752A Class D
- Molex Product Compliance Declaration
- IEC-62474
- chemSHERPA (xml)

Substances of Interest

- PFAS

EU RoHS Certificate of Compliance

Additional Product Compliance Information

Part Details

General

| | |
|----------------|--|
| Status | Active |
| Category | PCB Headers and Receptacles |
| Series | 105310 |
| Description | Nano-Fit Vertical Header, Through Hole, 2.50mm Pitch, Dual Row, 8 Circuits, with Kinked Pins, Tin (Sn) Plating, Black, Glow-Wire Capable, Tray |
| Application | Power, Wire-to-Board |
| Component Type | PCB Header |
| Product Name | Nano-Fit |
| UPC | 887191933474 |

Agency

| | |
|-----|---------|
| CSA | LR19980 |
| UL | E29179 |

Electrical

| | |
|-------------------------------|------------------|
| Current - Maximum per Contact | 7.5A |
| Voltage - Maximum | 250V AC (RMS)/DC |

Physical

| | |
|--------------------------------|------------------------------|
| Breakaway | No |
| Circuits (Loaded) | 8 |
| Circuits (maximum) | 8 |
| Color - Resin | Black |
| Durability (mating cycles max) | 25 |
| First Mate / Last Break | No |
| Glow-Wire Capable | Yes |
| Guide to Mating Part | No |
| Keying to Mating Part | Yes |
| Lock to Mating Part | Yes |
| Material - Metal | Brass |
| Material - Plating Mating | Tin |
| Material - Plating Termination | Tin |
| Material - Resin | Liquid Crystal Polymer (LCP) |
| Net Weight | 0.750/g |
| Number of Rows | 2 |
| Orientation | Vertical |
| Packaging Type | Tray |
| PCB Locator | Yes |
| PCB Retention | Yes |
| PCB Thickness - Recommended | 1.60mm, 2.40mm |
| PC Tail Length | 3.20mm |
| Pitch - Mating Interface | 2.50mm |
| Pitch - Termination Interface | 2.50mm |
| Plating min - Mating | 1.524µm |
| Plating min - Termination | 1.524µm |

| | |
|-------------------------------|----------------|
| Polarized to Mating Part | Yes |
| Polarized to PCB | Yes |
| Shrouded | Shrouded |
| Stackable | No |
| Temperature Range - Operating | -40° to +125°C |
| Termination Interface Style | Through Hole |

Mates With / Use With

Mates with Part(s)

| Description | Part Number |
|---|-------------------|
| Nano-Fit Receptacle Housing, TPA Capable, 2.50mm Pitch, Dual Row, 8 Circuits, Black, Glow-Wire Capable | <u>1053081208</u> |
| Nano-Fit Receptacle Housing, TPA Capable, 2.50mm Pitch, Dual Row, 8 Circuits, Black, Glow-Wire Capable, for UL 1569/1007 Wire | <u>2263621208</u> |
| Nano-Fit-to-Nano-Fit Off-the-Shelf (OTS) Overmolded Cable Assemblies | <u>245130</u> |

This document was generated on May 27, 2026