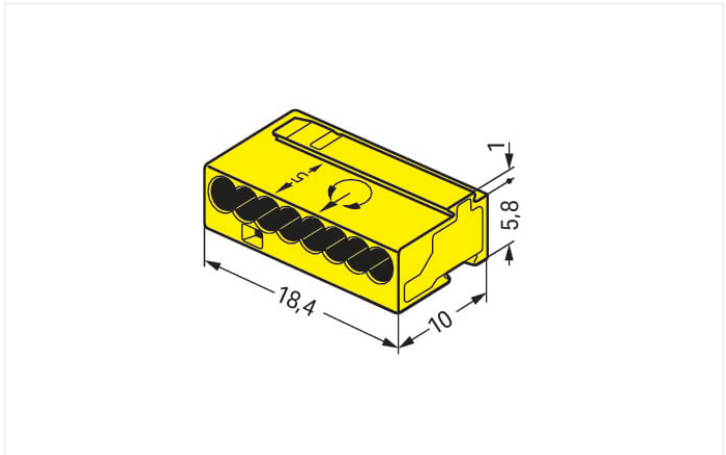


Data Sheet | Item Number: 243-508
MICRO PUSH WIRE® connector for junction boxes; for solid conductors; max. 0.8 mm Ø; 8-conductor; light gray cover; Surrounding air temperature: max 60°C; yellow
<https://www.wago.com/243-508>



Color: ■ yellow



Dimensions in mm

Push wire® splicing connector, 243 Series, yellow

Enjoy convenient electrical installations with push wire® splicing connector (item number 243-508). WAGO's 243 Series MICRO PUSH WIRE® connectors for junction boxes are suitable for low-voltage installations in buildings. Whether for bell or intercom system wiring, our MICRO junction box connectors are just right thanks to their compact design—perfect for these types of installations. Rated current and voltage are key factors to consider when selecting a splicing connector, as they indicate how the product can be used. This product has a rated voltage of 100 V and a rated current of 6 A. Ensure that the strip lengths are between 5 mm and 6 mm when connecting conductors to push wire® splicing connector. This product features one conductor terminal and utilizes PUSH WIRE®. Our proven PUSH WIRE® connection offers the fastest method for clamping conductors. It utilizes the conductor's stiffness to overcome the clamping spring's contact force. The item's dimensions are 18.4 x 6.8 x 10 mm (width x height x depth).

Notes

General safety instructions

NOTICE: Observe installation and safety instructions!

- Only to be used by electricians!
- Do not work under voltage/load!
- Use only for proper use!
- Observe national regulations/standards/guidelines!
- Observe technical specifications for the products!
- Observe the number of permissible potentials!
- Do not use damaged/dirty components!
- Observe conductor types, cross-sections and strip lengths!
- Insert conductor until it hits the product's backstop!
- Use original accessories!

To be sold only with installation instructions!

| Electrical data | | | |
|----------------------|-----|----------|--------|
| Ratings per | | EN 60664 | |
| Overvoltage category | III | III | II |
| Pollution degree | 3 | 2 | 2 |
| Nominal voltage | - | - | 100 V |
| Rated surge voltage | - | - | 1.5 kV |
| Rated current | - | - | 6 A |



| Connection data | | | | | | | | | | | | | | | | | | |
|---------------------------------|---|---|-----------------------|------------|----------------|---------|---------------------------------|--------|-----------------|---------------|--------------------|--------------------------------|---------------------------|---|--------------|----------------------------------|------------------|-------------------|
| Clamping units | 8 | <div>Connection 1</div> <table><tr><td>Connection technology</td><td>PUSH WIRE®</td></tr><tr><td>Actuation type</td><td>Push-in</td></tr><tr><td>Connectable conductor materials</td><td>Copper</td></tr><tr><td>Solid conductor</td><td>22 ... 20 AWG</td></tr><tr><td>Conductor diameter</td><td>0.6 ... 0.8 mm / 22 ... 20 AWG</td></tr><tr><td>Conductor diameter (note)</td><td>When using conductors of the same diameter, 0.5 mm (24 AWG) or 1 mm (18 AWG) diameters are also possible.</td></tr><tr><td>Strip length</td><td>5 ... 6 mm / 0.2 ... 0.24 inches</td></tr><tr><td>Wiring direction</td><td>Side-entry wiring</td></tr></table> | Connection technology | PUSH WIRE® | Actuation type | Push-in | Connectable conductor materials | Copper | Solid conductor | 22 ... 20 AWG | Conductor diameter | 0.6 ... 0.8 mm / 22 ... 20 AWG | Conductor diameter (note) | When using conductors of the same diameter, 0.5 mm (24 AWG) or 1 mm (18 AWG) diameters are also possible. | Strip length | 5 ... 6 mm / 0.2 ... 0.24 inches | Wiring direction | Side-entry wiring |
| Connection technology | PUSH WIRE® | | | | | | | | | | | | | | | | | |
| Actuation type | Push-in | | | | | | | | | | | | | | | | | |
| Connectable conductor materials | Copper | | | | | | | | | | | | | | | | | |
| Solid conductor | 22 ... 20 AWG | | | | | | | | | | | | | | | | | |
| Conductor diameter | 0.6 ... 0.8 mm / 22 ... 20 AWG | | | | | | | | | | | | | | | | | |
| Conductor diameter (note) | When using conductors of the same diameter, 0.5 mm (24 AWG) or 1 mm (18 AWG) diameters are also possible. | | | | | | | | | | | | | | | | | |
| Strip length | 5 ... 6 mm / 0.2 ... 0.24 inches | | | | | | | | | | | | | | | | | |
| Wiring direction | Side-entry wiring | | | | | | | | | | | | | | | | | |
| Total number of potentials | 1 | | | | | | | | | | | | | | | | | |
| Number of connection types | 1 | | | | | | | | | | | | | | | | | |
| Number of levels | 1 | | | | | | | | | | | | | | | | | |
| | | | | | | | | | | | | | | | | | | |
| | | | | | | | | | | | | | | | | | | |
| | | | | | | | | | | | | | | | | | | |
| | | | | | | | | | | | | | | | | | | |
| | | | | | | | | | | | | | | | | | | |

| Physical data | | |
|---------------|--|------------------------|
| Width | | 18.4 mm / 0.724 inches |
| Height | | 6.8 mm / 0.268 inches |
| Depth | | 10 mm / 0.394 inches |

| Material data | | |
|----------------------|--|--|
| Note (material data) | | Information on material specifications can be found here |
| Color | | yellow |
| Cover color | | light gray |
| Fire load | | 0.019 MJ |
| Weight | | 1.4 g |

| Environmental requirements | | |
|----------------------------------|--|--------|
| Ambient temperature (operation) | | +60 °C |
| Continuous operating temperature | | 105 °C |

| Commercial data | | |
|-----------------------|--|---------------|
| eCl@ss 10.0 | | 27-14-11-04 |
| eCl@ss 9.0 | | 27-14-11-04 |
| ETIM 9.0 | | EC000446 |
| ETIM 8.0 | | EC000446 |
| PU (SPU) | | 500 (50) pcs |
| Packaging type | | Box |
| Country of origin | | DE |
| GTIN | | 4044918502726 |
| Customs tariff number | | 85369010000 |

| Environmental Product Compliance | | |
|----------------------------------|--|-------------------------|
| RoHS Compliance Status | | Compliant, No Exemption |



Approvals / Certificates

General approvals



| Approval | Standard | Certificate Name |
|---------------------------------------|----------|------------------|
| CCA DEKRA Certification B.V. | EN 60998 | NTR NL 7812 |
| CSA DEKRA Certification B.V. | C22.2 | 70048857 |
| KEMA/KEUR DEKRA Certification B.V. | EN 60998 | 71-112493 |
| UR Underwriters Laboratories Inc. | UL 1059 | E45172 |

Declarations of conformity and manufacturer's declarations

| Approval | Standard | Certificate Name |
|---|----------|------------------|
| EU-Declaration of Confor- mity WAGO GmbH & Co. KG | - | - |
| UK-Declaration of Confor- mity WAGO GmbH & Co. KG | - | - |

Approvals for marine applications



| Approval | Standard | Certificate Name |
|---|----------|------------------|
| ABS American Bureau of Ship- ping | - | 18-HG1755093-PDA |
| LR Lloyds Register | EN 60998 | LR22207029TA |

Downloads

Environmental Product Compliance

Compliance Search

| | |
|---|--|
| Environmental Product Compliance 243-508 | |
|---|--|

Documentation

| Bid Text | | | |
|----------------------------|------------|-----------------|--|
| 243-508 | 19.02.2019 | xml 3.26 KB | |
| 243-508 | 17.05.2017 | doc 25.00 KB | |
| ausschreiben.de 243-508 | | | |



| CAD/CAE-Data | |
|--|---|
| <div>CAD data</div> <div>2D/3D Models 243-508</div> <div>↓</div> | <div>CAE data</div> <div>EPLAN Data Portal 243-508</div> <div>↓</div> |
| | <div>WSCAD Universe 243-508</div> <div>↓</div> |

| 1 Compatible Products |
|--------------------------|
| 1.1 Optional Accessories |
| 1.1.1 Marking |
| 1.1.1.1 Marking strip |



Item No.: 210-332/575-103
Marking strips; as a DIN A4 sheet; MARKED; 1-12 (160x); Height of marker strip: 3 mm; Strip length 182 mm; Horizontal marking; Self-adhesive; white

| 1.1.2 Mounting adapter |
|------------------------------|
| 1.1.2.1 Mounting accessories |

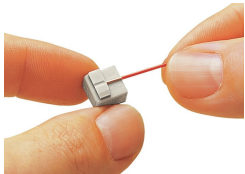


Item No.: 243-112
Mounting carrier; for 4 connectors; 243 Series; for DIN-35 rail mounting/screw mounting; orange

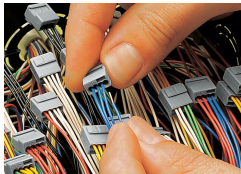


Item No.: 243-113
Mounting carrier; for 6 connectors; 243 Series; for DIN-35 rail mounting/screw mounting; orange

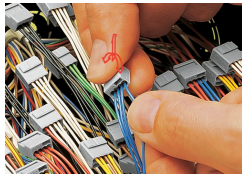
| Installation Notes |
|-----------------------|
| Conductor termination |



Strip solid conductors to 5 ... 6 mm (0.19 ... 0.23 inch).

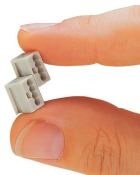


Termination: Insert the stripped solid conductor until it hits the backstop.



Removal: Hold conductor to be removed and twist alternately left and right while pulling the connector.

| Installation |
|--------------|
|--------------|



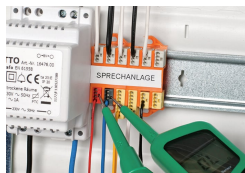
Connector strips:
Assembling modular connectors into connector strips.

Commoning



Commoned connector strips

Testing



Testing via test port opposite to conductor entry.



The 243 Series can be used in both communication and alarm systems according to the VdS (German Association of Property Insurers) guidelines.

No general approval is given to PUSH WIRE® connectors by the VdS association. The connectors must be tested together with the different parts of the system. The requirements for connectors are specified in the VdS guidelines for junction boxes (VdS 2116) in section 8.7: "The junction box connectors must be designed to guarantee a reliable and stable connection."

The verification of the fulfillment of these requirements is documented in the VDE test report No. 2574-1440-4031 for the insulated 243 Series PUSH WIRE® Connectors.