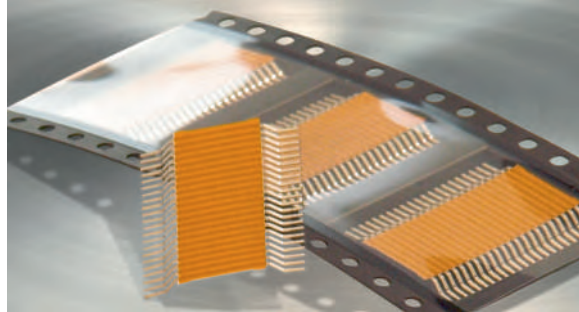


PANTA SMD



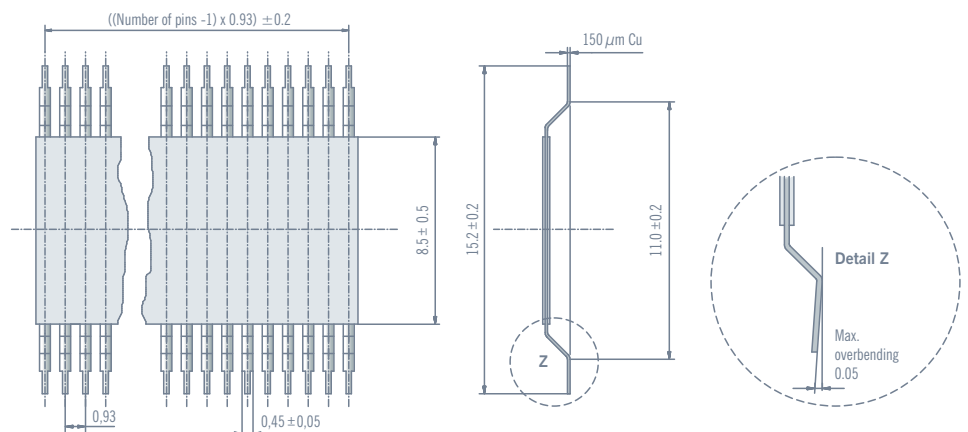
PRODUCT DESCRIPTION

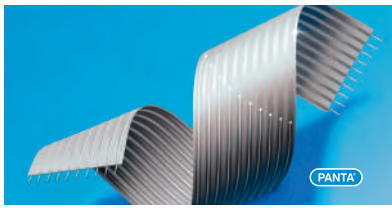
The PANTA SMD jumper has been designed to connect sandwiched PCBs or PCBs positioned at different angles. It offers the user a great variety of possible configurations when designing electronic devices.

- ▶ High flexibility and compensation of tolerances
- ▶ Resistance to high temperatures
- ▶ Placement by SMD assembly machines
- ▶ Can be reflow soldered
- ▶ Best solution to interconnect 90° and 180° SMD boards

CHARACTERISTICS

- ▶ Available pitch: 0.93 mm
- ▶ Bridge length: 11.2 mm
- ▶ Total length: 15.2 mm
- ▶ Number of pins: 6, 9, 11 and 22
- ▶ Packaging unit: 1500 pcs on returnable reel
- ▶ Special pitches and other pin counts on request
- ▶ Customized SMD solutions available. Tooling costs will be charged.





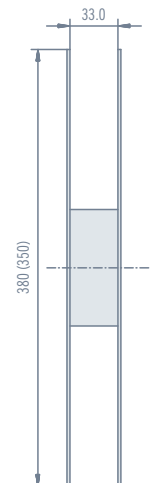
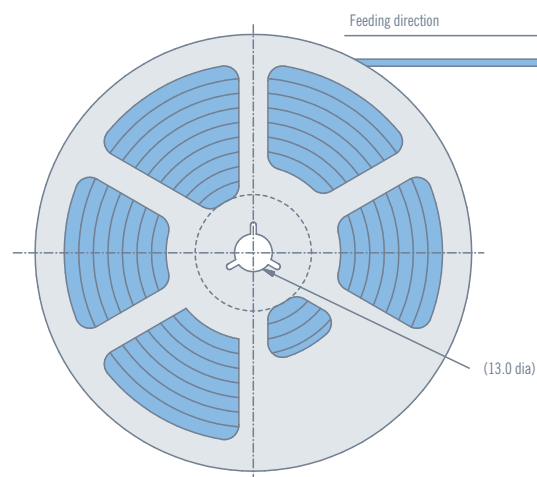
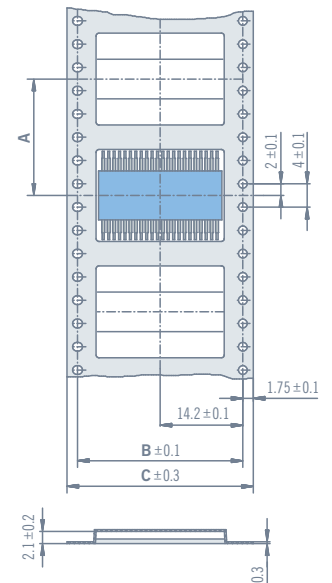
PANTA SMD

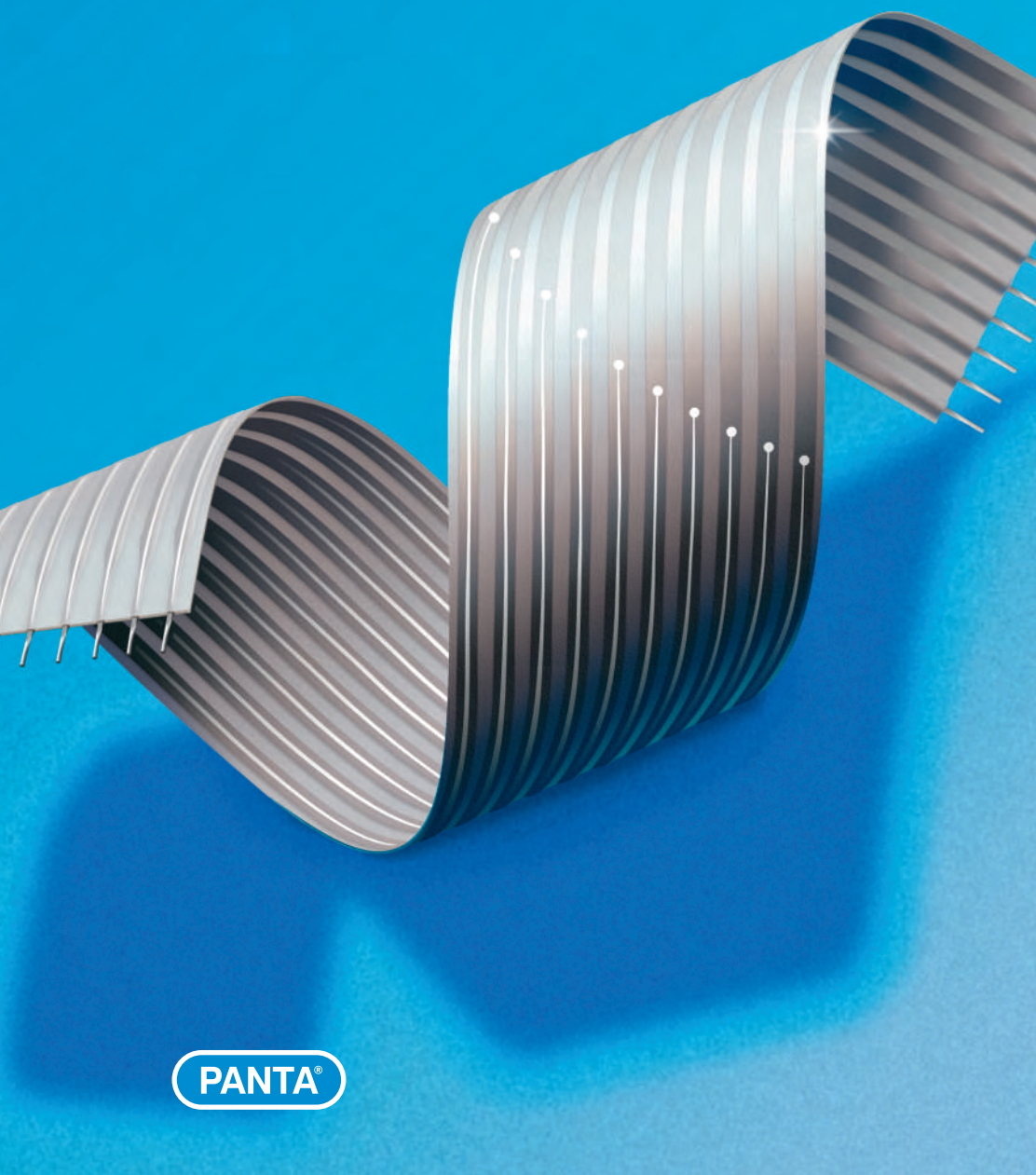
ORDER CODE

	Number of pins	Pitch E=0.93 mm	Insulation length 8.3 mm
SMD - 22 - 093 - K - 083 -			<input type="checkbox"/>
Insulation material K = Polyimide			Special designs on request, drawing required

TECHNICAL DATA

Pitch	mm	0.93
Max. number of pins		6 to 22
Insulation material		Polyimide insulation 25 μ m + adhesive
Insulation resistance	Ω	10^8
Coplanarity	mm	0,15
Min. bending radius	mm	2.0
Max. bending cycle		20 x 135°
Conductor material		Cu 150 μ m SN
Current rating at 20°C	A	1
Soldering temperature	°C/sec.	260/10 reflow solderable
Operating temperature	°C	-40°C to +125°C





PANTA®



SUMIDA flexible connections GmbH
 Agathe-Zeis-Straße 5 · D-01454 Radeberg · Germany
 Phone +49 3528 404030 · Fax +49 3528 404040
infoflexible@eu.sumida.com · www.sumida-flexcon.com

