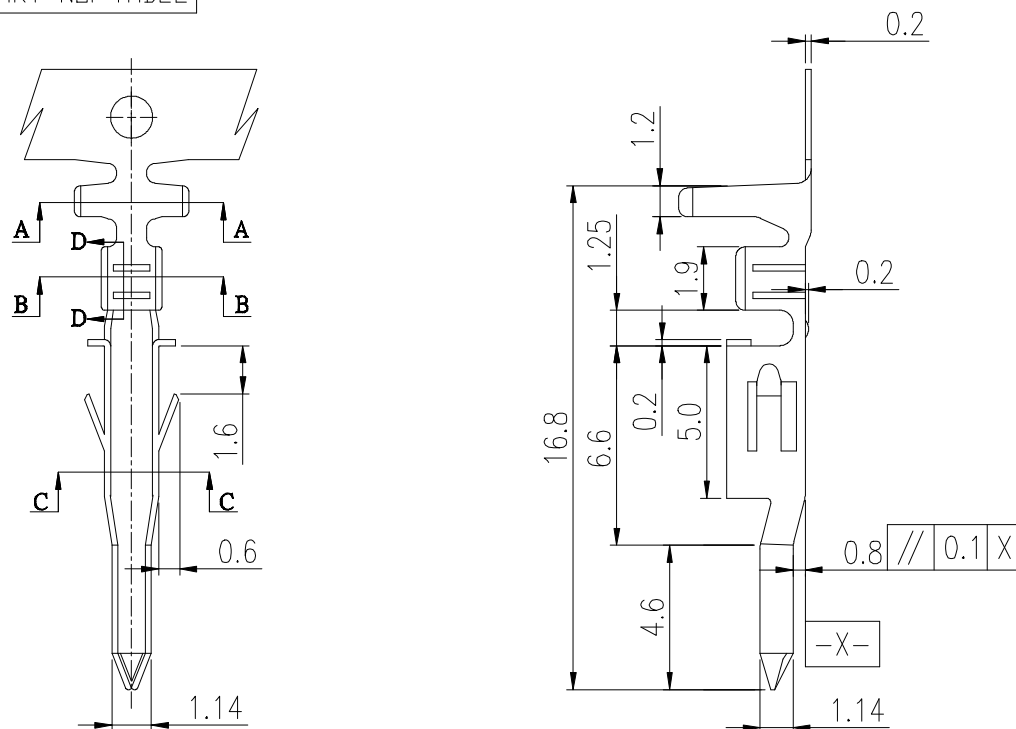


PRODUCT NUMBER
SEE PART NO. TABLE



NOTES:

1. MATERIAL: OPTIONAL.
2. THIS TERMINAL IS USED WITH FCI PLUG HSG 10127816.
3. PRODUCT SPECIFICATION: GS-12-1181.
4. PACKAGE SPECIFICATION: GS-14-2362.
5. PART NUMBER SCHEME:
10127818- X X X X LF

PLATING TYPE:
P: PRE-PLATED
BLANK: POST-PLATED

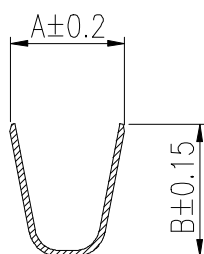
APPLICABLE AWG:
1. AWG #16~#22
2. AWG #24~#28

PLATING CODE:
1: GOLD FLASH
2: TIN

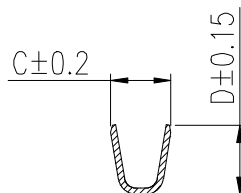
MATERIAL CODE:
1: PHOSPHORUS BRONZE
2: BRASS

6. DIMENSIONAL & PART NO. TABLE:

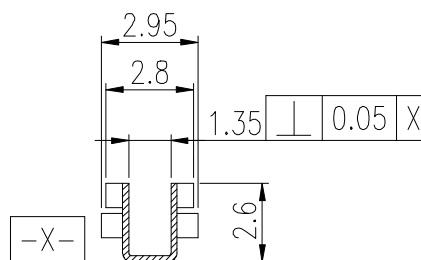
PART NO.	A	B	C	D	APPLICABLE WIRES
10127818-XX2XLF	3.2	3.4	1.8	2.2	#24~#28
10127818-XX1XLF	3.7	4.5	1.8	2.7	#16~#22



SEC A-A



SEC B-B



SEC C-C

mat'l. code				surface	tolerance	projection	product family			
litr				ecn no	dr	date	tolerances unless otherwise specified			
A				TAI	2013-11-11		angles			
B				ELX-T-17193	TAI	2014-03-12	X.X ±0.4			
C				ELX-T-18006	TAI	2014-06-19	X.XX ±0.3			
							X*±1°			
				dr	KENNY TAI	2013-11-11	scale			
				enr	KENNY TAI	2013-11-11	MM			
				chr	KENNY TAI	2013-11-11	FCI			
				appd	PM ZHENG	2013-11-22	dwg no			
sheet index				revision sheet	C	1	sheet 1 of 1			
							10127818			
							A4			
							type			
							CUSTOMER Drawing			