



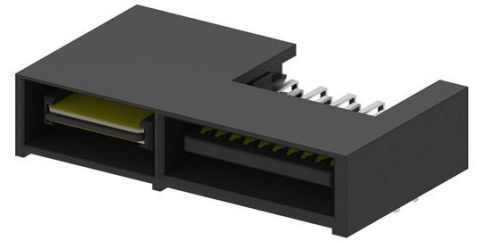
Part Number : [459852133](#)

Product Description : EXTreme LPHPower Plug, Right-Angle, 2 Power Contacts, 20 Signal Contacts, Select Gold (Au) Plating, for 1.57mm Thick PC Board

Series Number : 45985

Status : Active

Product Category : Board-to-Board Connectors



Documents and Resources

Drawings

[459852133_sd.pdf](#)

3D Models and Design Files

[STEP AP242](#)

[SOLIDWORKS](#)

[Creo](#)


[Symbol and Footprint \(Multi-Format\)](#)

Specifications

[PS-45984-001-001.pdf](#)

Product Environment Compliance

Compliance

| | |
|--------------------|---|
| GADSL/IMDS | Not Relevant |
| China RoHS |  per SJ/T 11365-2006 |
| EU ELV | Not Relevant |
| Low-Halogen Status | Low-Halogen per IEC 61249-2-21 |
| REACH SVHC | Not Contained per D(2025)7771-DC (04 Feb 2026) |
| EU RoHS | Compliant per EU 2015/863 |

[Compliance Statements](#)

- EU RoHS
- REACH SVHC

- Low-Halogen

Industry Documents

- IPC 1752A Class C
- IPC 1752A Class D
- Molex Product Compliance Declaration
- IEC-62474
- chemSHERPA (xml)

Substances of Interest

- PFAS

EU RoHS Certificate of Compliance

Additional Product Compliance Information

Part Details

General

| | |
|----------------|---|
| Status | Active |
| Category | Board-to-Board Connectors |
| Series | 45985 |
| Description | EXTreme LPHPower Plug, Right-Angle, 2 Power Contacts, 20 Signal Contacts, Select Gold (Au) Plating, for 1.57mm Thick PC Board |
| Application | Board-to-Board, Power, Signal |
| Component Type | Plug |
| Product Name | EXTreme LPHPower |
| UPC | 195842344112 |

Agency

| | |
|-----|---------|
| CSA | LR19980 |
| UL | E29179 |

Electrical

| | |
|-------------------------------|---|
| Current - Maximum per Contact | 30.0A |
| Voltage - Maximum | 250V AC (RMS)/DC (Power), 30V DC (Signal) |

Physical

| | |
|--------------------------------|--------------------------------|
| Breakaway | No |
| Circuits (Loaded) | 22 |
| Circuits (maximum) | 22 |
| Color - Resin | Black |
| Durability (mating cycles max) | 250 |
| First Mate / Last Break | No |
| Flammability | 94V-0 |
| Glow-Wire Capable | No |
| Guide to Mating Part | No |
| Keying to Mating Part | No |
| Lock to Mating Part | No |
| Material - Metal | High Performance Alloy (HPA) |
| Material - Plating Mating | Gold |
| Material - Plating Termination | Tin |
| Material - Resin | High Temperature Thermoplastic |
| Net Weight | 3.917/g |
| Number of Rows | 2 |
| Orientation | Right Angle |
| Packaging Type | Tray |
| PCB Locator | No |
| PCB Retention | No |
| PCB Thickness - Recommended | 1.57mm |
| PC Tail Length | 2.90mm |
| Pitch - Mating Interface | 1.27mm, 12.00mm |
| Pitch - Termination Interface | 1.27mm, 2.00mm, 2.50mm |
| Plating min - Mating | 0.762µm |
| Plating min - Termination | 3.810µm |
| Polarized to Mating Part | Yes |
| Polarized to PCB | Yes |
| (p)ower-(s)ignal Configuration | 2p - 20s |
| Shrouded | Shrouded |
| Stackable | No |
| Temperature Range - Operating | -40° to +105°C |
| Termination Interface Style | Through Hole |

Mates With / Use With

Mates with Part(s)

| Description | Part Number |
|--|--------------|
| EXTreme LPHPower Right-Angle PCB Receptacles | <u>45984</u> |

This document was generated on May 08, 2026