



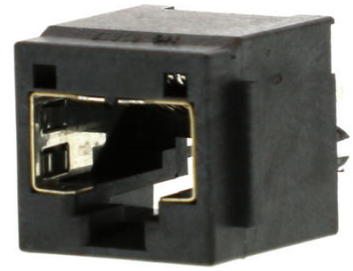
**Part Number :** [855075001](#)

**Product Description :** Modular Jack, Cat5e, Vertical, Top Entry, Through Hole, 8/8, Int. Shielded, with Ribs, Tray

**Series Number :** 85507

**Status :** Active

**Product Category :** Modular Jacks and Plugs



---

## Documents and Resources

### Drawings

[855075001\\_sd.pdf](#)

[PK-95022-001.pdf](#)

### 3D Models and Design Files

[STEP AP242](#)

[SOLIDWORKS](#)

[Creo](#)

[Symbol and Footprint \(Multi-Format\)](#)

### Specifications

[AS-85513-001-001.pdf](#)

[PS-85507-001-001.pdf](#)

---

## Product Environment Compliance

### Compliance

GADSL/IMDS	Not Relevant
China RoHS	 per SJ/T 11365-2006
EU ELV	Not Relevant
Low-Halogen Status	Low-Halogen per IEC 61249-2-21
REACH SVHC	Not Contained per D(2025)7771-DC (04 Feb 2026)
EU RoHS	Compliant per EU 2015/863

[Compliance Statements](#)

- EU RoHS
- REACH SVHC
- Low-Halogen

#### Industry Documents

- IPC 1752A Class C
- IPC 1752A Class D
- Molex Product Compliance Declaration
- IEC-62474
- chemSHERPA (xml)

#### Substances of Interest

- PFAS

#### EU RoHS Certificate of Compliance

#### Additional Product Compliance Information

## Part Details

### General

Status	Active
Category	Modular Jacks and Plugs
Series	85507
Description	Modular Jack, Cat5e, Vertical, Top Entry, Through Hole, 8/8, Int. Shielded, with Ribs, Tray
Comments	Reflow Capable, Internal Shield
Component Type	PCB Jack
Magnetic	No
Performance Category	5e
Power over Ethernet (PoE)	N/A
Product Name	Modular Jack 8/8,RJ45
UPC	800756696621

### Agency

UL	E107635
----	---------

### Electrical

Current - Maximum per Contact	1.5A
Grounding to PCB	Yes
Shielded	Yes

Voltage - Maximum	125V DC
-------------------	---------

## Physical

Boot Color	N/A
Color - Resin	Black
Durability (mating cycles max)	2500
Flammability	94V-0
Inverted / Top Latch	No
Jack Height	16.25mm
Lightpipes/LEDs	None
Material - Metal	Phosphor Bronze
Material - Plating Mating	Gold over Palladium Nickel
Material - Plating Termination	Tin
Material - Resin	High Temperature Thermoplastic
Net Weight	3.300/g
Orientation	Vertical (Top Entry)
Packaging Type	Tray
PCB Locator	Yes
PCB Retention	Yes
PCB Thickness - Recommended	1.57mm
Pitch - Mating Interface	1.02mm
Pitch - Termination Interface	1.27mm
Plating min - Mating	0.051µm, 1.016µm
Plating min - Termination	1.905µm
Port Configuration	1x1
Positions / Loaded Contacts	8/8
Temperature Range - Operating	-40° to +85°C
Termination Interface Style	Through Hole
Waterproof / Dustproof	No
Wire/Cable Type	N/A

## Solder Process Data

Max-Duration	3
Lead-Free Process Capability	WAVE
Max-Cycle	1

Max-Temp	260
----------	-----

---

This document was generated on Apr 25, 2026