

KBC 600V 35-800A

For new installations, Bussmann recommends the 700 Volt FWP series fuse. The 600V fuses are supplied as replacements only.

| Type | Ordering Information | | | | Dimensions | | |
|----------|----------------------|---------|---------|-------------|---------------------|---------------|--|
| | Part Number | | | Carton Qty. | Carton Weight (lbs) | Figure Number | |
| KBC 600V | KBC-35 | KBC-45 | KBC-60 | 10 | 1.40 | Fig. 1 | |
| | KBC-40 | KBC-50 | | | | | |
| | KBC-70 | KBC-90 | | 5 | 1.44 | Fig. 2 | |
| | KBC-80 | KBC-100 | | | | | |
| | KBC-110 | KBC-150 | KBC-200 | 1 | 0.48 | Fig. 1 | |
| | KBC-125 | KBC-175 | | | 0.77 | | |
| | KBC-225 | KBC-300 | KBC-400 | | | | |
| | KBC-250 | KBC-350 | | | 1.32 | Fig. 3 | |
| KBC-450 | KBC-500 | KBC-600 | 4.50 | | | | |
| KBC-800 | | | | | | | |

†U.L. Recognition on 35 through 600 amperes only. 1 kg = 2.2 lbs 1 lb = 0.45 kg

■ Interrupting rating 200kA RMS Symmetrical.

■ Consult Bussmann for DC ratings.

Dimensions

Fig. 1: 35-60 and 110-600 Amp Range

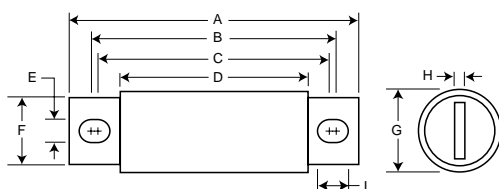


Fig. 3: 800 Amp Range

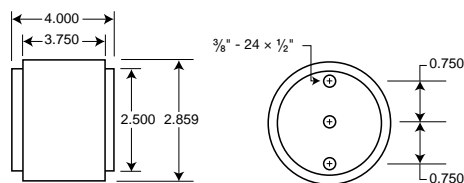
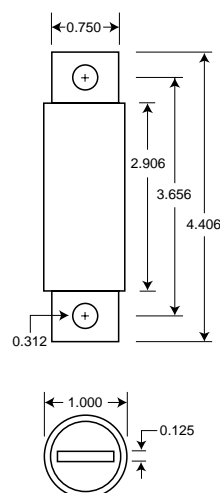


Fig. 2: 70-100 Amp Range



| Order # | Fig. | A | B | C | D | E | F | G | H | I |
|-------------|------|-------------|-------|-------|-------|-------|-------|-------|-------|-------|
| KBC-35-60 | 1 | 4.375 | 3.750 | 3.500 | 2.750 | 0.343 | 0.625 | 0.813 | 0.094 | 0.468 |
| KBC-70-100 | 2 | See Drawing | | | | | | | | |
| KBC-110-200 | 1 | 4.406 | 3.719 | 3.594 | 2.906 | 0.312 | 0.875 | 1.219 | 0.187 | 0.375 |
| KBC-225-400 | 1 | 5.125 | 4.188 | 3.563 | 2.906 | 0.406 | 1.000 | 1.500 | 0.250 | 0.719 |
| KBC-450-600 | 1 | 5.125 | 4.389 | 3.687 | 2.875 | 0.406 | 1.500 | 2.000 | 0.250 | 0.757 |
| KBC-800 | 3 | See Drawing | | | | | | | | |

Dimension in inches.

1mm = 0.0394" 1" = 25.4mm

The only controlled copy of this BIF document is the electronic read-only version located on the Bussmann Network Drive. All other copies of this document are by definition uncontrolled. This bulletin is intended to clearly present comprehensive product data and provide technical information that will help the end user with design applications. Bussmann reserves the right, without notice, to change design or construction of any products and to discontinue or limit distribution of any products. Bussmann also reserves the right to change or update, without notice, any technical information contained in this bulletin. Once a product has been selected, it should be tested by the user in all possible applications.