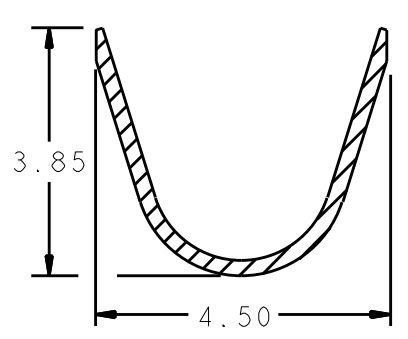
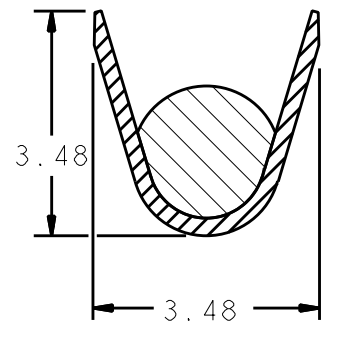


DRAWING REVISIONS (RELEASE DATE ON FILE)			
REV	DOCUMENT	APP	APPROVAL DATE
J	PER C.O. # 988	V.R.	04/21/10

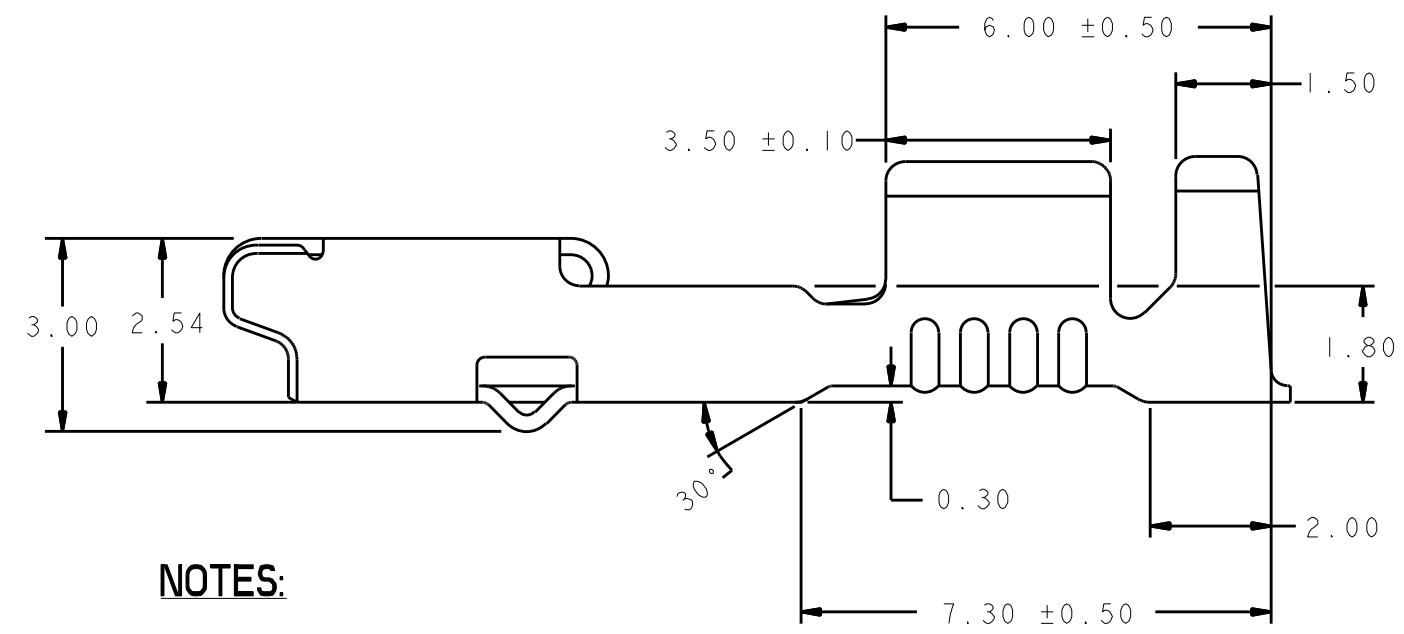
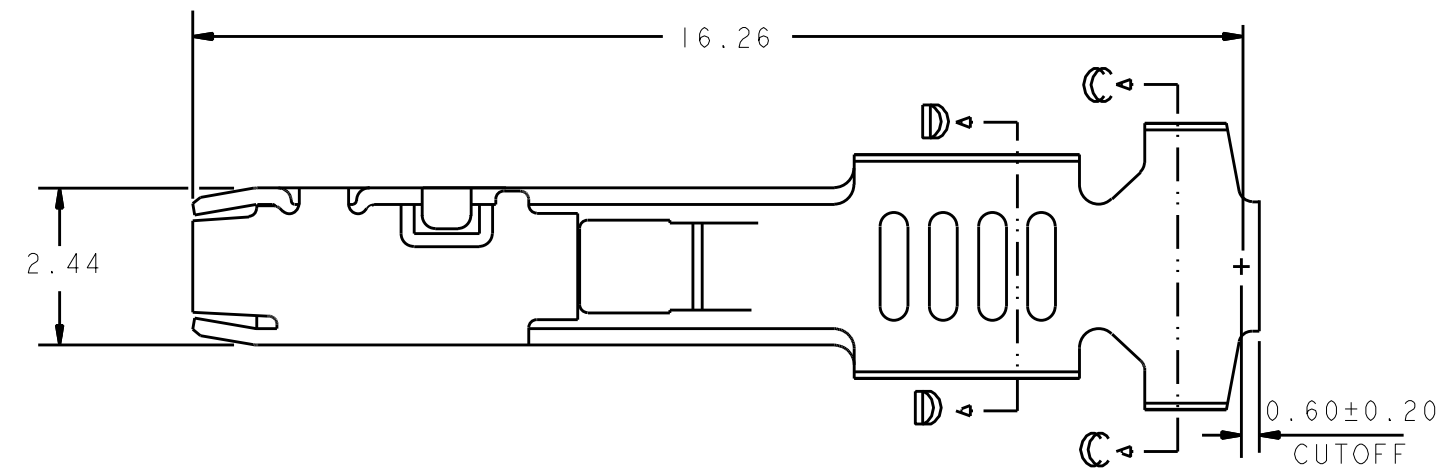
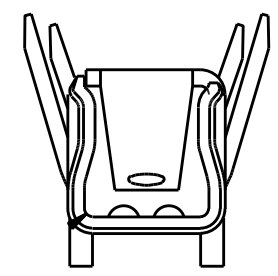


SECTION C-C



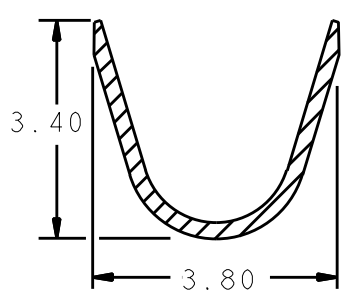
SECTION D-D

P/N 4250000873

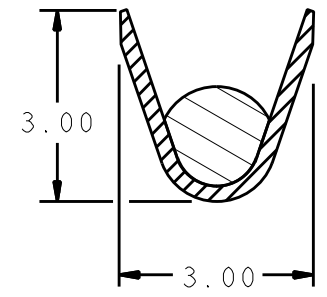


NOTES:

1. TERMINAL MATERIAL: HIGH PERFORMANCE COPPER BASED ALLOY.
2. TERMINAL PRE-PLATED 1.0 MIN MICRON THICKNESS 100% TIN (Sn) OVERALL.
3. TERMINALS SUPPLIED 3,500 EA. PER REEL.
4. TOLERANCES UNLESS OTHERWISE NOTED:
X.X ± 0.5
X.XX ± 0.30
5. ALL DIMENSIONS IN MM UNLESS OTHERWISE SPECIFIED.



SECTION C-C



SECTION D-D

P/N 4250000872

UNITS		PRO/E		CINCH		MODELED BY: NAME		
DO NOT SCALE DRAWING		DESIGN ENGINEER	DATE	TITLE		1700 FINLEY RD LOMBARD, IL 60148		
UNLESS OTHERWISE SPECIFIED: ALL DIMENSIONS ARE IN mm		R. BYCZEK	12/21/99	FEMALE TERMINAL BIR 16/20 AWG UNIVERSAL		CONTROL SPEC NUMBER		
FILLET/RADIUS 0.50 MAX.	TOLERANCES X ± 0.3 XX ± 0.13 XXX ± 0.025 ANGULAR ± 0.5	APPROVALS ON FILE		MATERIAL		-		
CONFIDENTIAL THIS DOCUMENT IS THE PROPERTY OF CINCH. NEITHER THIS DOCUMENT NOR ANY OF THE INFORMATION CONTAINED IN IT MAY BE DUPLICATED OR DISCLOSED WITHOUT PRIOR WRITTEN CONSENT OF CINCH. ©COPYRIGHT 2010 CINCH				SEE NOTES		PROJECT NUMBER		A14243
				CAD FILE NUMBER	DRAWING NUMBER	SCALE		SHEET 1 OF 2
		4250000872S	4250000872S	71785	B	1:1		

