

# Housing - HC-EVO-D15-BWS-PLR-BK



1411336  
<https://www.phoenixcontact.com/us/products/1411336>

Please be informed that the data shown in this PDF document is generated from our Online Catalog. Please find the complete data in the user documentation. Our General Terms of Use for Downloads are valid.



Panel mounting base D15, with single locking latch, material: PA, height: 26 mm, cable gland: none, Standard, with flat gasket

## Your advantages

- Lower costs than metal version
- Low weight
- Lower risk of condensation

## Commercial Data

Item number	1411336
Packing unit	1 pc
Minimum order quantity	1 pc
Sales Key	B10
Product Key	BF7APN
Catalog Page	Page 526 (C-2-2019)
GTIN	4046356929080
Weight per Piece (including packing)	47.1 g
Weight per Piece (excluding packing)	46.3 g
Customs tariff number	85389099
Country of origin	PL

# Housing - HC-EVO-D15-BWS-PLR-BK



1411336

<https://www.phoenixcontact.com/us/products/1411336>

## Technical Data

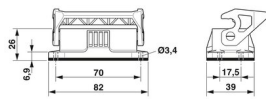
### Notes

General	For contact inserts HC-D15, A10
---------	---------------------------------

### Product properties

Type	D15
Product type	Housing with locking latch
Application	Standard
Housing type	Panel mounting base
Locking type	with single locking latch
Pg screw connection	none

### Dimensions

Dimensional drawing	
Width	39 mm
Height	26 mm
Length	82 mm
Drill hole distance, horizontal	70 mm
Drill hole distance, vertical	17.5 mm
Hole diameter	3.3 mm

### Installation dimensions

Width of the assembly cutout	24 mm
Length of the assembly cutout	58 mm

### Material specifications

Color	black
Flammability rating according to UL 94	V0 (Housing) V0 (Interlock)
Sealing material	NBR (Flat gasket)
Locking latch material	PA
Impact strength	IK08
Housing material	PA

### Ambient conditions

Degree of protection	IP66
Degree of protection	12 (UL 50e)
Impact strength	IK08
Ambient temperature (operation)	-40 °C ... 125 °C

# Housing - HC-EVO-D15-BWS-PLR-BK



1411336

<https://www.phoenixcontact.com/us/products/1411336>

## Mechanical properties

### Mechanical data

Locking type	Latch
--------------	-------

# Housing - HC-EVO-D15-BWS-PLR-BK

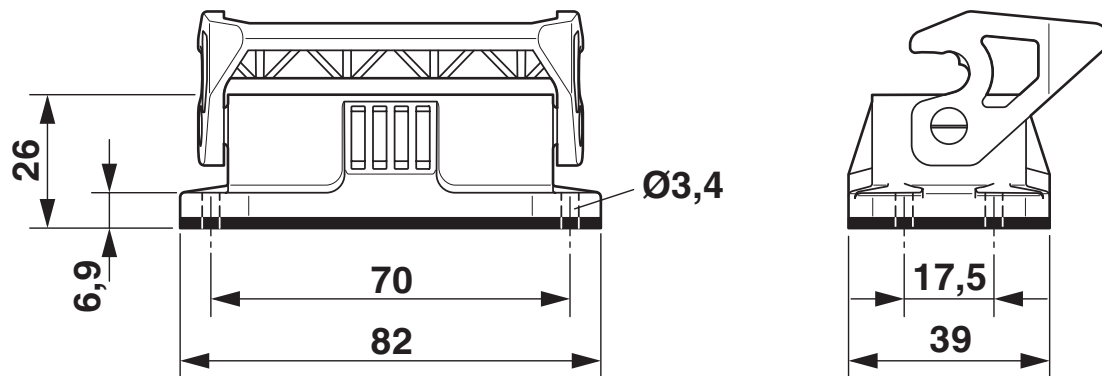
1411336

<https://www.phoenixcontact.com/us/products/1411336>

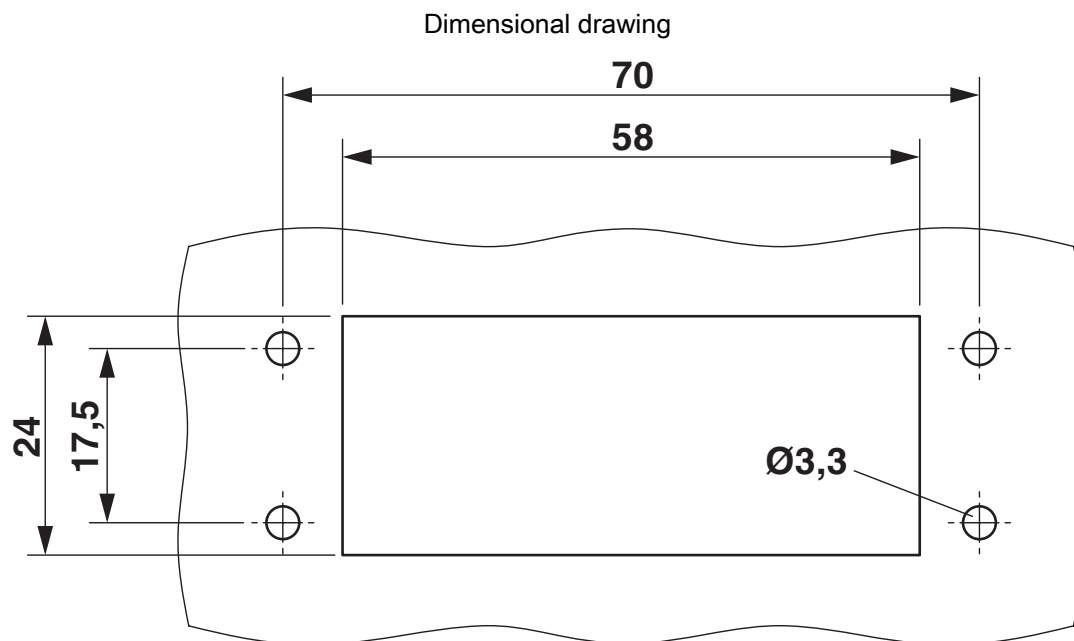


## Drawings

Dimensional drawing



Dimensional drawing



Mounting cutout

# Housing - HC-EVO-D15-BWS-PLR-BK



1411336

<https://www.phoenixcontact.com/us/products/1411336>

## Approvals

**DNV**

Approval ID: TAE000037S



**EAC**

Approval ID: RU C-DE.AI30.B.01102



**EAC**

Approval ID: RU C-DE.BL08.B.00511

# Housing - HC-EVO-D15-BWS-PLR-BK



1411336

<https://www.phoenixcontact.com/us/products/1411336>

## Classifications

### ECLASS

ECLASS-9.0	27440202
ECLASS-10.0.1	27440202
ECLASS-11.0	27440202

### ETIM

ETIM 8.0	EC000437
----------	----------

### UNSPSC

UNSPSC 21.0	31261500
-------------	----------

# Housing - HC-EVO-D15-BWS-PLR-BK



1411336

<https://www.phoenixcontact.com/us/products/1411336>

## Environmental Product Compliance

China RoHS	Environmentally friendly use period: unlimited = EFUP-e
	No hazardous substances above threshold values

# Housing - HC-EVO-D15-BWS-PLR-BK

1411336

<https://www.phoenixcontact.com/us/products/1411336>



## Accessories

### Housing brackets

Housing brackets - HC-D15-SL-PLBK - 1414667

<https://www.phoenixcontact.com/us/products/1414667>



Replacement plastic single locking latch, for HC-EVO-D15.....BK housing

---

### Flat gasket

Flat gasket - HC-D15-SG-RBK - 1414669

<https://www.phoenixcontact.com/us/products/1414669>



Replacement flat gasket, for HEAVYCON EVO panel mounting base HC-EVO-D15.....BK



# Housing - HC-EVO-D15-BWS-PLR-BK



1411336

<https://www.phoenixcontact.com/us/products/1411336>

## Module carrier frame

Module carrier frame - HC-M-D15-MF-HB - 1062122

<https://www.phoenixcontact.com/us/products/1062122>

Module carrier frame, size: D15, 0.14 mm<sup>2</sup> ... 2.5 mm<sup>2</sup>, application: Module carrier frame, for size D15 housings



---

## Protective cover

Protective cover - HC-D15-BC-HI-PLBK - 1414673

<https://www.phoenixcontact.com/us/products/1414673>

Protective cover D15, for single locking latch, protective cover material: PC, height: 15.2 mm, seal: no



---

Phoenix Contact 2022 © - all rights reserved

<https://www.phoenixcontact.com>

Phoenix Contact USA  
586 Fulling Mill Road  
Middletown, PA 17057, United States  
(+717) 944-1300  
[info@phoenixcon.com](mailto:info@phoenixcon.com)