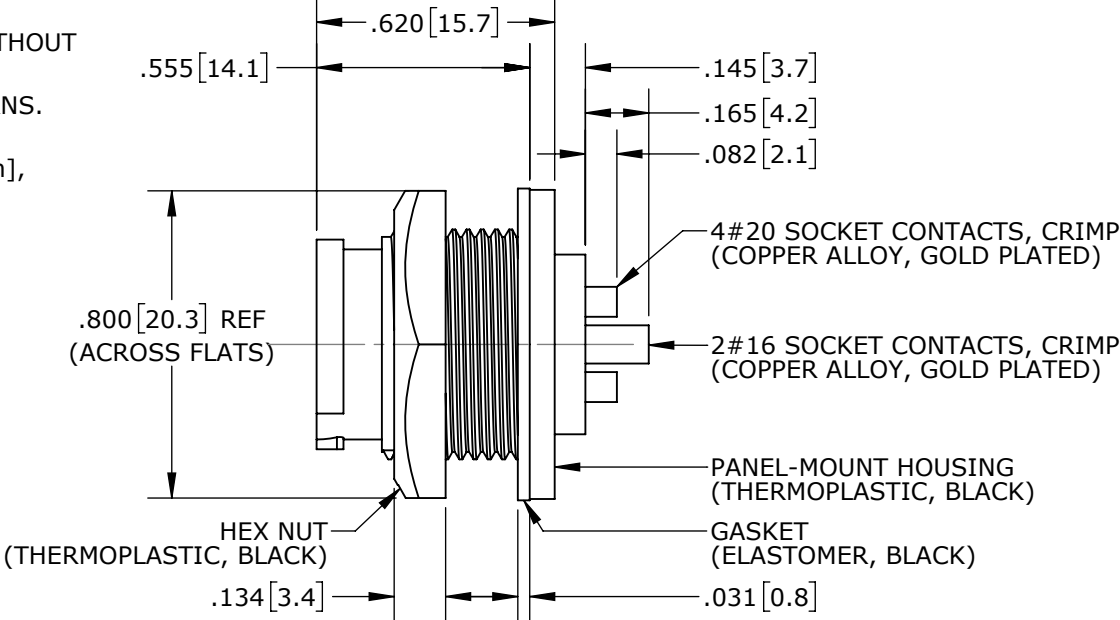
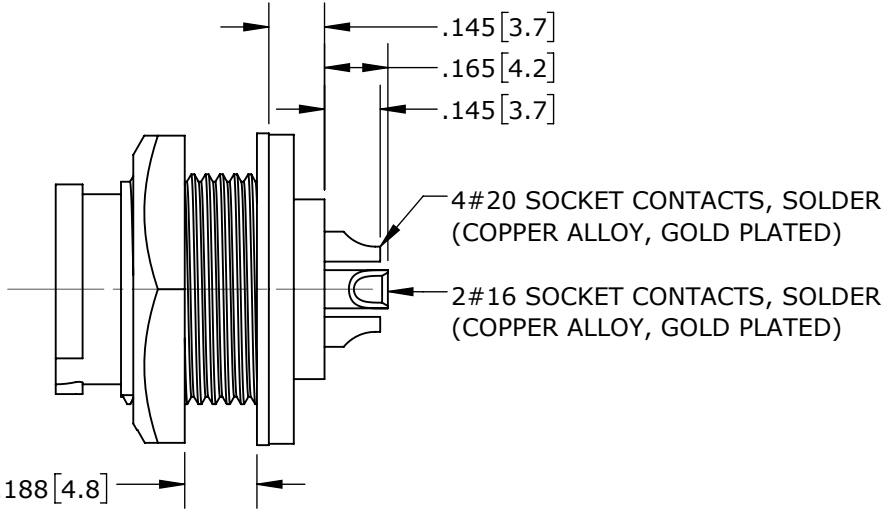


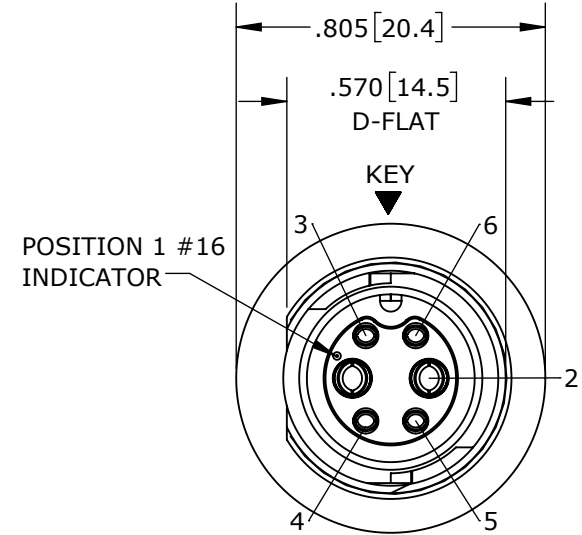
- NOTES:
- 1. CRIMP CONTACTS SUPPLIED UNASSEMBLED AND WITHOUT EPOXY BACKING.
 - 2. REFER TO DRAWING HPMIMIX FOR CONTACT PATTERNS.
 - 3. HEX-NUT TORQUE: 8-10 IN-LB.
 - 4. DIMENSIONS ARE REFERENCE ONLY, IN INCHES [mm], WITHIN ±0.015 UNLESS OTHERWISE NOTED.



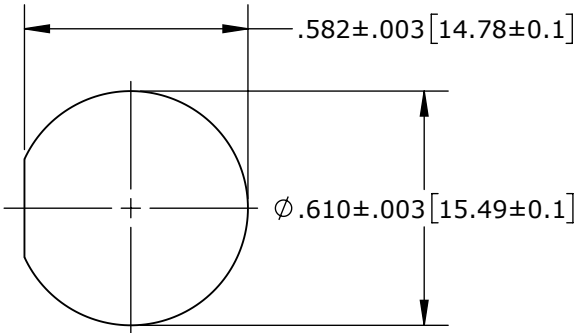
CRIMP CONTACTS (SHOWN ASSEMBLED)
W7C80-6SG-P-300 SHOWN



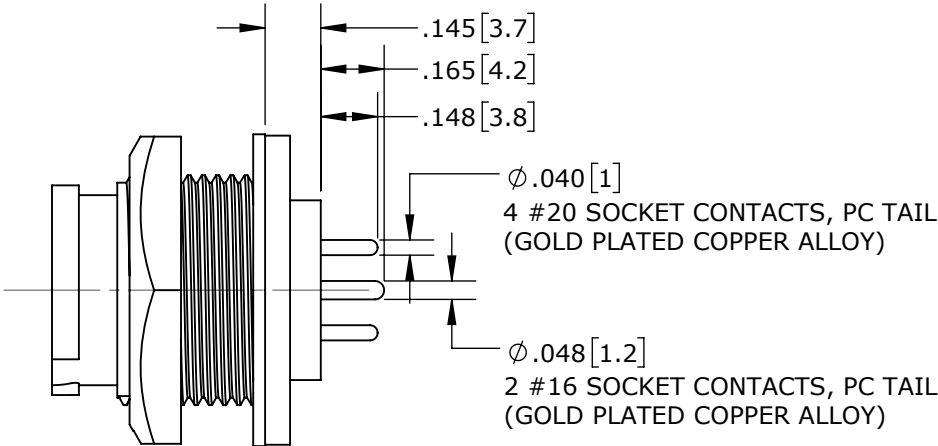
SOLDER CONTACTS
W7C82-6SG-P-300 SHOWN



MATING FACE
W7C82-6SG-P-300 SHOWN



RECOMMENDED PANEL CUTOUT



PC TAIL CONTACTS
W7C81-6SG-P-3ES SHOWN

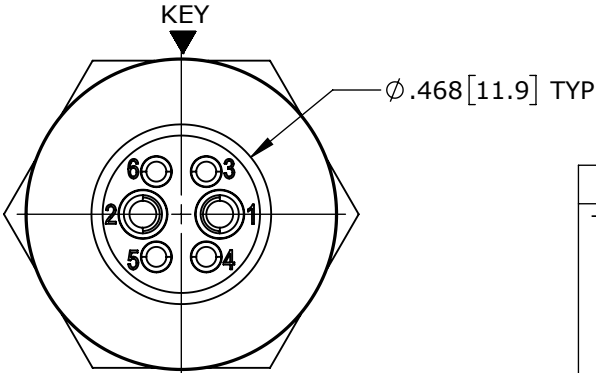
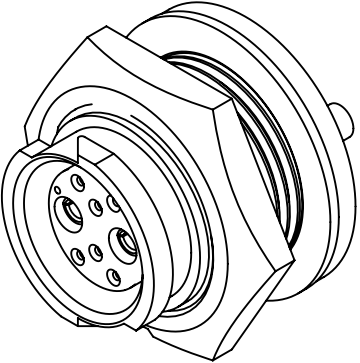
PANEL-MOUNT CONNECTOR PART NUMBERS:

W 7 C 8 X - 6 S G - P - 3 X X

MIXED CONTACTS:
C = 2 #16 + 4 #20

CONTACTS STYLE:
0 = CRIMP
2 = SOLDER
1 = PC TAIL

EPOXY BACKING:
3ES = WITH EPOXY
300 = WITHOUT EPOXY



WIRING END
W7C82-6SG-P-300 SHOWN

CUSTOMER APPROVAL

THIS DOCUMENT CONTAINS CONFIDENTIAL INFORMATION PROPRIETARY TO CONXALL CORPORATION. ANY REPRODUCTION, DISCLOSURE, OR USE OF THIS DOCUMENT / INFORMATION IS EXPRESSLY PROHIBITED UNLESS AUTHORIZED IN WRITING BY CONXALL CORPORATION.

APPROVED BY: _____
DATE: _____

RoHS COMPLIANT

0A	PNK	01-12-18	PDR16014	
REV.	INIT.	DATE	DESCRIPTION	
ALL INFORMATION ILLUSTRATED IS THE PROPERTY OF "CONXALL CORPORATION." UNAUTHORIZED DUPLICATION OR DISTRIBUTION OF THIS DOCUMENT IS PROHIBITED.			ORIG. DRAWN BY: PNK	DATE: 01-12-18
			CHECKED BY:	
ALL UNITS ARE IN FEET, INCHES, FRACTION OF INCHES AND DECIMALS.			APPROVED BY:	
			SCALE: NTS	SIZE: B
▷ = CRITICAL CHARACTERISTIC FLAG PER SPEC. XXXX			FILE: W7C8X-6SG-P-3XX_CD	DIRECTORY: SLW
			SHEET: 1 OF 1	
			TITLE: PANEL-MOUNT CONNECTOR 2 #16 + 4 #20 SOCKET CONTACTS INSTA-CLICK™ MINI-CON-X	
			CUSTOMER: STANDARD PRODUCT	
			PART NUMBER: W7C8X-6SG-P-3XX	REV 0A