



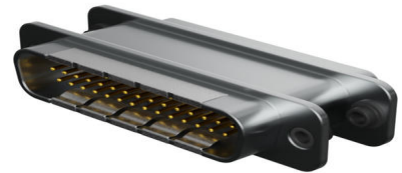
Part Number : [732830351](#)

Product Description : High-Density EMI Filtered D-Sub Adapter, Male-to-Female, Straight, 1000pF C, 44 Circuits

Series Number : 73283

Status : Active

Product Category : D-Sub Connectors



Documents and Resources

Drawings

[732830351 sd.pdf](#)

[STEP AP242](#)

[SOLIDWORKS](#)

[Creo](#)

Product Environment Compliance

Compliance

GADSL/IMDS	Not Relevant
China RoHS	Not Reviewed per SJ/T 11365-2006
EU ELV	Not Relevant
Low-Halogen Status	Not Reviewed per IEC 61249-2-21
REACH SVHC	Not Reviewed per D(2025)6375-DC (05 Nov 2025)
EU RoHS	Not Reviewed per EU 2015/863

Compliance Statements

- EU RoHS
- REACH SVHC
- Low-Halogen

Industry Documents

- IPC 1752A Class C
- IPC 1752A Class D
- Molex Product Compliance Declaration

- IEC-62474
- chemSHERPA (xml)

Substances of Interest

- PFAS

EU RoHS Certificate of Compliance

Additional Product Compliance Information

Part Details

General

Status	Active
Category	D-Sub Connectors
Series	73283
Description	High-Density EMI Filtered D-Sub Adapter, Male-to-Female, Straight, 1000pF C, 44 Circuits
Application	RF
Component Type	Adapter
Product Name	EMI Filtered D-Sub
Type	High Density EMI Filtered
UPC	198282750994

Electrical

Current - Maximum per Contact	3.0A
Capacitance Value	1000 pF
Capacitance Tolerance	± 25%
3 dB Cut-off Frequency Max. (MHz)	5.1
Dielectric Withstanding Voltage (V)	300
EMI Filter Circuits	Capacitive
Minimum Insertion Loss (dB) - 1 GHz	35
Minimum Insertion Loss (dB) - 10 MHz	3
Minimum Insertion Loss (dB) - 100 MHz	20
Minimum Insertion Loss (dB) - 20	8

MHz	
Minimum Insertion Loss (dB) - 200 MHz	25
Minimum Insertion Loss (dB) - 50 MHz	14
Minimum Insertion Loss (dB) - 500 MHz	32
Voltage - Maximum	100V DC

Physical

Circuits (Loaded)	44
Circuits (maximum)	44
Color - Resin	Black
Durability (mating cycles max)	500
Gender	Male/Female
Material - Contact	Copper Alloy
Material - Plating Mating	Gold
Material - Plating Termination	Gold
Material - Resin	Polyester
Material - Shell	Zinc
Number of Rows	3
Orientation	Straight
Packaging Type	Tray
Panel Mount	Rear
Panel Mount Method	Hardware
PCB Locator	No
PCB Retention	None
PC Tail Length	N/A
Pitch - Mating Interface	2.29mm
Pitch - Termination Interface	2.29mm
Plating min - Mating	1.270µm
Plating min - Termination	Flash
Plating - Shell	Nickel
Polarized to Mating Part	Yes
Polarized to PCB	Yes
Ports	1

Temperature Range - Operating	-55° to +125°C
Termination Style	N/A
Waterproof / Dustproof	No
Wire Size (AWG)	N/A

This document was generated on Jan 22, 2026