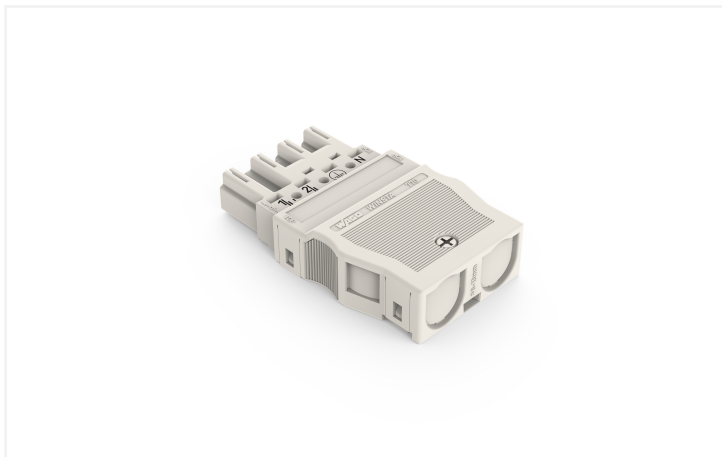


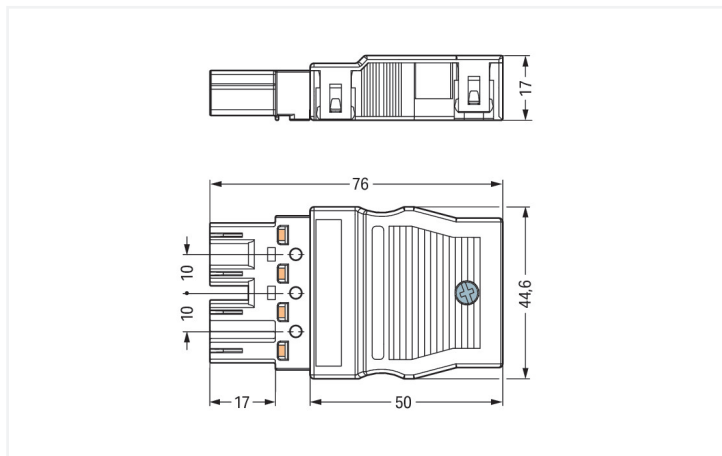
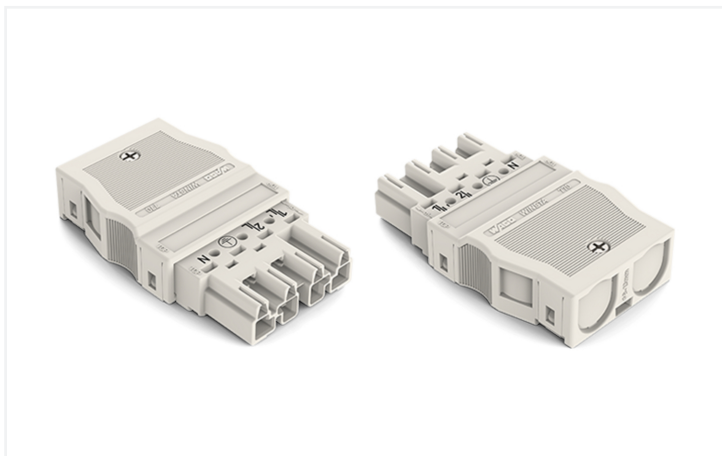
# Data Sheet | Item Number: 770-134

Plug; with strain relief housing; 4-pole; Cod. A; 4,00 mm<sup>2</sup>; white

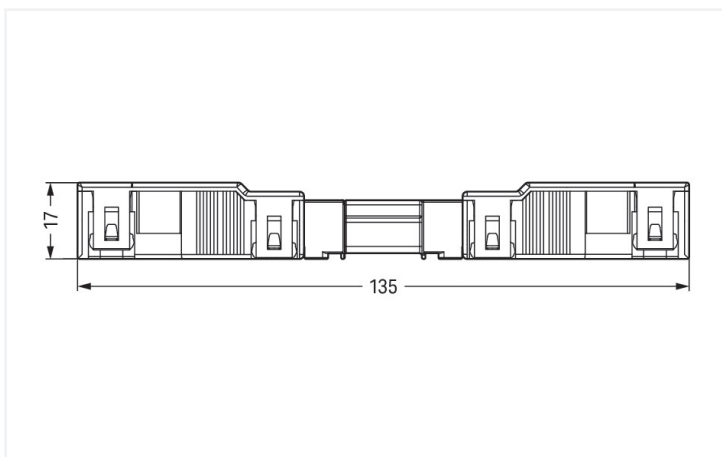
<https://www.wago.com/770-134>



Color: ■ white



Dimensions in mm



Dimensions in mm  
Overall length when mated

## Male connector/plug WINSTA® MIDI with strain relief

The WINSTA® MIDI male connector/plug with protection against mismatching allows installation of solid and fine-stranded conductors. WAGO pluggable installation connectors are used when specifications repeat or are planned on a defined pattern, for example for installing grid lighting or flush-mount lighting. The color

coding and mechanical coding of the pluggable installation connector ensure error-free installation of the individual components – including protection against mismatching. The pluggable installation connector offers protection against contact with live components in accordance with protection type IP20 (When mated and secured with a strain relief housing; IP2xC (These compact connectors are not designed for use in open, easily accessible areas!)). Standard mains applications for almost any domain of use can be implemented with WINSTA® MIDI pluggable installation connectors with A coding. This pluggable installation connector is designed for a current load of up to 25 A. Thus, it can also be used for high power loads. Our WINSTA® MIDI product line guarantees maximum flexibility for the installation. With its Push-in CAGE CLAMP® spring pressure connection technology, it achieves time-saving, error-free installation and offers customization and flexibility for meeting various installation requirements. A range up to 55 mm can be used for the strip length.

Lower costs through fast commissioning and elimination of service expenses – solutions from WINSTA® MIDI

The WINSTA® Pluggable Connection System is perfectly tailored to the very strict requirements of building installation. It makes electrical installation pluggable, and therefore more efficient, even more reliable, and error-free. Use of this pre-assembled system reduces assembly times and installation errors at the construction site. Now you can also cut installation costs without compromising safety and quality: with marking eliminates the need for servicing and prevents unnecessary downtime.

- pluggable installation connectors with protection against mismatching
- for automation controllers
- with A coding for a great number of applications
- exact dimensions
- convenient installation and commissioning

**This item includes:**

	<b>Item No.: 770-514</b>	<b>1</b>		<b>Item No.: 770-234</b>	<b>1</b>
	Strain relief housing; 4-pole; for 2 cables; 9.0 ... 13.0 mm; 55 mm; white			Plug; 4-pole; Cod. A; white	

**Notes**

General safety information	<ol style="list-style-type: none"> <li>1. Only to be used by a qualified electrician or by a person electrically instructed for the task (EIP per DIN VDE 0105-100).</li> <li>2. Do not install while energized or under load.</li> <li>3. Use only for its intended purpose.</li> <li>4. Observe applicable national regulations, standards and directives.</li> <li>5. Observe the technical specifications of the products.</li> <li>6. Ensure correct polarity assignment.</li> <li>7. Do not use damaged or contaminated components.</li> <li>8. Observe conductor types, conductor cross-sections, strip lengths and cable diameters.</li> <li>9. Insert conductors up to the stop.</li> <li>10. Use only with locking lever and strain relief.</li> <li>11. Use original accessories only.</li> </ol> <p><b>To be sold only with installation instructions!</b></p>
----------------------------	--

**Electrical data**

Ratings per	IEC/EN 60664-1			Approvals per	UL 1977
Overvoltage category	III	III	II	Rated voltage	600 V
Pollution degree	3	2	2	Rated current	23 A
Nominal voltage	400 V	-	-		
Rated impulse withstand voltage	6 kV	-	-		
Rated current	25 A	-	-		

**General information**

Note on contact resistance	approx. 1 mΩ of contact resistance approx. 0.25 mΩ contact transition plug/ socket
----------------------------	--

## Connection Data

Clamping units	8
Total number of potentials	4
PE function	Preceding PE contact

## Connection 1

Connection technology	Push-in CAGE CLAMP®
Actuation type	Operating tool Push-in
Nominal cross-section	4 mm <sup>2</sup> / 12 AWG
Solid conductor	0.5 ... 4 mm <sup>2</sup> / 20 ... 12 AWG
Solid conductor; push-in termination	1.5 ... 4 mm <sup>2</sup> / 16 ... 12 AWG
Stranded conductor	0.5 ... 2.5 mm <sup>2</sup> / 20 ... 14 AWG
Fine-stranded conductor	0.5 ... 4 mm <sup>2</sup> / 20 ... 12 AWG
Fine-stranded conductor; with insulated ferrule	0.25 ... 1.5 mm <sup>2</sup> / 20 ... 16 AWG
Fine-stranded conductor; with uninsulated ferrule	0.25 ... 2.5 mm <sup>2</sup> / 20 ... 14 AWG
Fine-stranded conductor; with ferrule; push-in termination	1.5 mm <sup>2</sup> / 16 AWG
Strip length	9 mm / 0.35 inches
Pole number	4
Connectable sheathed cable diameter	9 ... 13 mm
Conductor entry direction to mating direction	0°
Strip length (outer insulation)	55 mm

## Physical data

Pin spacing	10 mm / 0.394 inches
Width	44.6 mm / 1.756 inches
Height	17 mm / 0.669 inches
Depth	76 mm / 2.992 inches

## Mechanical data

Use	General mains applications
Coding	A
Variable coding	Yes
Marking	1/L' 2/L ⊕ N
Potential marking	1/L' 2/L ⊕ N
Mating force of a plug-in connection	approx. 20 ... 70 N (depending on pole number)
Retention force of a plug-in connection	Locked: > 80 N
Unmating force of a plug-in connection	Unlocked: approx. 20 ... 70 N (depending on pole number)
Number of mating cycles	200, without resistive load
Protection type	IP20; When mated and secured with a strain relief housing: IP2xC (These compact connectors are not designed for use in open, easily accessible areas!)
Screw tightening torque	0.5 Nm

## Plug-in connection

Contact type (pluggable connector)	Male connector/plug
Connector (connection type)	for conductor
Mismating protection	Yes
Note on mismating protection	All WINSTA® components are 100% protected against mismating when: a.) plugging different numbers of poles b.) plugging while rotated 180 c.) plugging while laterally staggered d.) plugging one pole
Locking lever	Can be retrofitted
Locking of plug-in connection	Locking lever

### Plug-in connection

Note on locking system	All connectors for mounted installations (snap-in versions for lighting fixtures or devices, all types of PCB and distribution connectors) are factory-equipped with locking levers to ensure plugs and sockets are securely locked. Additional locking levers are only required for flying leads (plug/socket).
Strain relief	Strain relief housing

### Material data

Note (material data)	<a href="#">Information on material specifications can be found here</a>
Color	white
Cover color	gray
Material group	I
Insulation material (main housing)	Polyamide (PA66)
Flammability class per UL94	V0
Clamping spring material	Chrome-nickel spring steel (CrNi)
Contact material	Copper or copper alloy; surface-treated
Contact Plating	Tin
Fire load	0.533 MJ
Connector color	white
Strain relief color	white
Weight	25.5 g

### Environmental requirements

Processing temperature	-5 ... +40 °C
Continuous operating temperature	-35 ... +85 °C
Note on continuous operating temperature	Insulating parts for temperatures ≤ 105 °C

### Commercial data

Product Group	20 (Winsta)
PU (SPU)	25 pcs
Packaging type	Box
Country of origin	PL
GTIN	4044918254489
Customs tariff number	85366990990

### Product Classification

UNSPSC	39121402
eCl@ss 10.0	27-44-06-05
eCl@ss 9.0	27-44-06-05
ETIM 9.0	EC002560
ETIM 10.0	EC002560
ECCN	NO US CLASSIFICATION

**Environmental Product Compliance**

RoHS Compliance Status	Compliant, No Exemption
------------------------	-------------------------

**Approvals / Certificates**

**General approvals**



Approval	Standard	Certificate Name
CCA DEKRA Certification B.V.	EN 61535	71-123228
CCA DEKRA Certification B.V.	IEC 61535	NL -84761
cURus Underwriters Laboratories Inc.	UL 1977	E45171
cURus Underwriters Laboratories Inc.	UL 1059	E 45172
VDE VDE Prüf- und Zertifizierungsinstitut	EN 61984	40002889
VDE VDE Prüf- und Zertifizierungsinstitut	EN 61535	40029808

**Declarations of conformity and manufacturer's declarations**

Approval	Standard	Certificate Name
EU-Declaration of Conformity WAGO GmbH & Co. KG	-	-

**Approvals for marine applications**



Approval	Standard	Certificate Name
ABS American Bureau of Shipping	-	24-0095977-PDA
DNV GL Det Norske Veritas, Germanischer Lloyd	-	TAE00001Z6
LR Lloyds Register	IEC 61984	LR22429487TA

**Downloads**

**Environmental Product Compliance**

**Compliance Search**

Environmental Product Compliance 770-134	↓
--	---

## Documentation

Bid Text			
770-134	08.06.2015	doc 23.50 KB	<a href="#">↓</a>
770-134	19.02.2019	xml 3.01 KB	<a href="#">↓</a>
ausschreiben.de 770-134			<a href="#">↓</a>

## CAD/CAE-Data

CAD data	
2D/3D Models 770-134	<a href="#">↓</a>

CAE data	
EPLAN Data Portal 770-134	<a href="#">↓</a>
WSCAD Universe 770-134	<a href="#">↓</a>
ZUKEN Portal 770-134	<a href="#">↓</a>

## 1 Compatible Products

### 1.1 System counterpart

#### 1.1.1 Cable assembly



**Item No.: 771-9994/106-102**  
pre-assembled connecting cable; Eca; Socket/open-ended; 4-pole; Cod. A; H05VV-F 4G 1.5 mm<sup>2</sup>; 1 m; 1,50 mm<sup>2</sup>; white

**Item No.: 771-9994/006-102**  
pre-assembled interconnecting cable; Eca; Socket/plug; 4-pole; Cod. A; H05VV-F 4G 1.5 mm<sup>2</sup>; 1 m; 1,50 mm<sup>2</sup>; white

#### 1.1.2 Distribution connector



**Item No.: 770-994**  
h-distribution connector; 4-pole; Cod. A; 1 input; 2 outputs; outputs on one side; 2 locking levers; white

**Item No.: 770-995**  
h-distribution connector; 4-pole; Cod. A; 1 input; 2 outputs; outputs on one side; 3 locking levers; for flying leads; white

**Item No.: 770-6224**  
Linect® T-connector; 4-pole; Cod. A; 1 input; 2 outputs; white

**Item No.: 770-676**  
T-distribution connector; 4-pole; Cod. A; 1 input; 2 outputs; 2 locking levers; white



**Item No.: 770-677**  
T-distribution connector; 4-pole; Cod. A; 1 input; 2 outputs; 3 locking levers; for flying leads; white

**1.1.3 Female connector/socket**



**Item No.: 770-724**  
Snap-in socket; 4-pole; Cod. A; white



**Item No.: 770-724/009-000**  
Snap-in socket; with protruding mating face; 4-pole; Cod. A; white



**Item No.: 770-824/011-000**  
Socket for PCBs; angled; 4-pole; Cod. A; white



**Item No.: 770-824**  
Socket for PCBs; straight; 4-pole; Cod. A; white



**Item No.: 770-224**  
Socket; 4-pole; Cod. A; white



**Item No.: 770-124**  
Socket; with strain relief housing; 4-pole; Cod. A; 4,00 mm<sup>2</sup>; white

**1.2 Required Accessories**

**1.2.1 Locking system**

**1.2.1.1 Locking system**



**Item No.: 770-101**  
Locking lever; for flying leads; for manual operation; black



**Item No.: 770-121**  
Locking lever; for flying leads; for manual operation; white



**Item No.: 770-111**  
Locking lever; for flying leads; for tool operation; black



**Item No.: 770-131**  
Locking lever; for flying leads; for tool operation; white

**1.3 Optional Accessories**

**1.3.1 Cover**

**1.3.1.1 Cover**



**Item No.: 770-360**  
Lockout cap; for plugs; 5-pole; separable; yellow



**Item No.: 897-2005**  
Protective cap; Type4; for sockets and plugs; PVC; red

**1.3.2 Marking**

**1.3.2.1 Marker**



**Item No.: 770-450/000-006**  
Marker card; Plastic; blue



**Item No.: 770-450/000-001**  
Marker card; Plastic; green



**Item No.: 770-450/000-012**  
Marker card; Plastic; orange



**Item No.: 770-450/000-005**  
Marker card; Plastic; red



**Item No.: 770-450**  
Marker card; Plastic; white



**Item No.: 770-450/000-002**  
Marker card; Plastic; yellow

### 1.3.3 Tool

#### 1.3.3.1 Operating tool



**Item No.: 210-719**

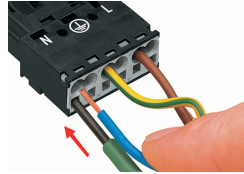
Operating tool; Blade: 2.5 x 0.4 mm; with a partially insulated shaft

### Installation Notes

#### Conductor termination



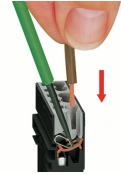
1. Strip length, outer insulation = 35 mm (2-pole), 55 mm (3- to 5-pole)
2. Strip length = 9 mm
3. Extended ground conductor = 8 mm



To terminate fine-stranded conductors, open the clamping unit via screwdriver (2.5 mm blade width) and insert a stripped conductor until it hits the backstop.

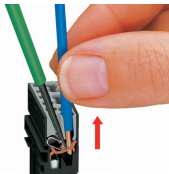


Insert the stripped solid conductor until it hits the backstop.



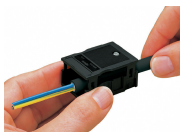
To terminate fine-stranded conductors, open the clamping unit via screwdriver (2.5 mm blade width) and insert a stripped conductor until it hits the backstop.

#### Conductor removal

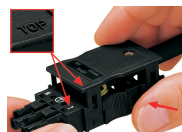


To remove the conductor, actuate the clamp via screwdriver (2.5 mm blade width) and pull out the conductor.

### Installation



We recommend pulling the pre-latched strain relief housing over the cable prior to termination. However, the strain relief can be mounted at a later time as well.



Latch the strain relief housing onto the plug/socket. Note the "TOP" inscription.



Prepare strain relief housing by snapping together upper and bottom part.



Tighten strain relief screw with screwdriver (2.5 mm blade width).