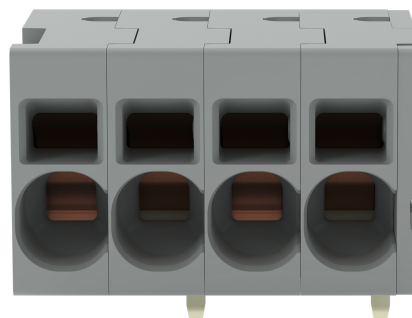
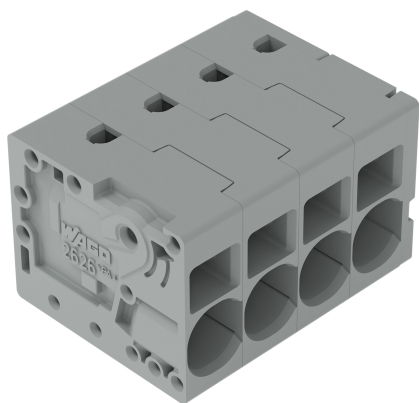


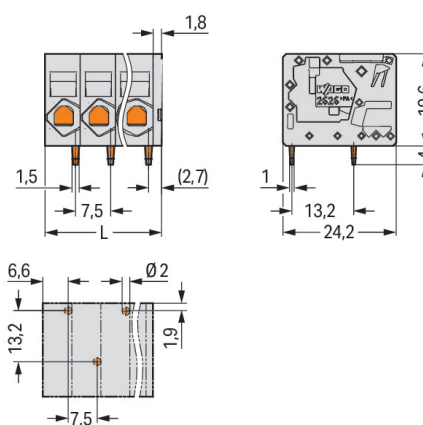
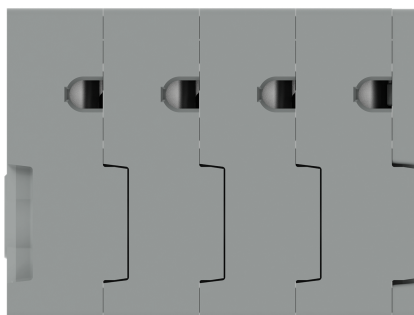
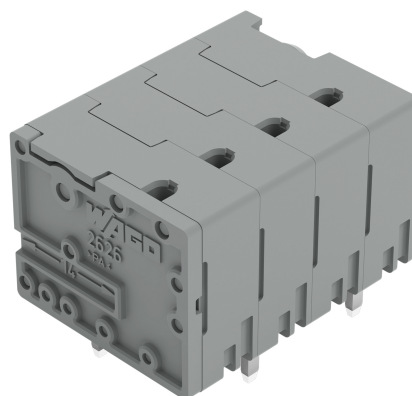
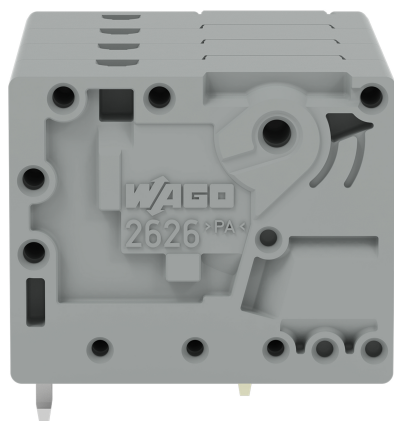
Data Sheet | Item Number: 2626-1104/020-000

PCB terminal block; 6 mm²; Pin spacing 7.5 mm; 4-pole; Push-in CAGE CLAMP®; 6,00 mm²; gray

<https://www.wago.com/2626-1104/020-000>

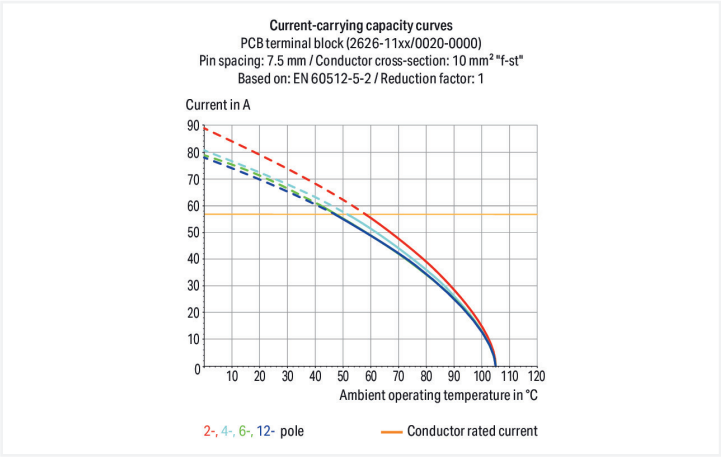
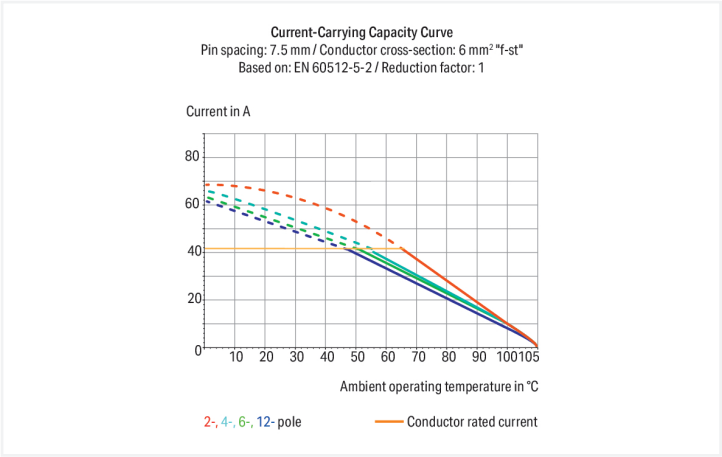


Color: ■ gray



Dimensions in mm

$L = (\text{pole no.} - 1) \times \text{pin spacing} + 9.3 \text{ mm}$





PCB terminal block, 2626 Series, with 7.5 mm pin spacing

Our PCB terminal block (item number 2626-1104/020-000) is the perfect way to connect conductors quickly and securely. It offers the flexibility needed for different mounting types. Our PCB terminal block is rated for 1000 V and is designed for use with a rated current of up to 48 A. It is therefore suitable for high-load applications. Ensure that the strip lengths are between 13 mm and 15 mm when connecting conductors to this PCB terminal block. This product features one conductor terminal and utilizes Push-in CAGE CLAMP®. Push-in CAGE CLAMP® technology provides a universal connection solution for any type of conductor. It allows both solid and fine-stranded conductors with ferrules to be inserted directly into the clamping point without the need for tools. The item's dimensions are 31.8 x 23.6 x 24.2 mm (width x height x depth). Depending on the type of conductor, this PCB terminal block is ideal for conductor cross sections ranging from 0.2 mm² to 10 mm². Up to four potentials / four poles can be connected to this terminal strip using four clamping points on one level. The clamping spring is made of chrome-nickel spring steel (CrNi), the contacts are made of electrolytic copper (ECu), and the gray housing is made of polyamide (PA66) for insulation. Tin is used for coating the contact surfaces. This PCB terminal block is operated with an operating tool. THT is used to assemble the PCB terminal block. These PCB terminal blocks are mounted using feed-through mounts.. Insert the conductor into the board at an angle of 0°.. The solder pins, which are 1.5 x 1 mm in cross-section and 4 mm long, are set out over the entire terminal strip (staggered). There are one solder pin per potential.

Notes	
Variants:	Other pole numbers Direct marking Other colors Other versions (or variants) can be requested from WAGO Sales or configured at https://configurator.wago.com/ .



Electrical data

Ratings per IEC/EN 60664-1				Approvals per UL 1059			
Overvoltage category	III	III	II	Use group	B	C	D
Pollution degree	3	2	2	Rated voltage	600 V	600 V	-
Nominal voltage	1000 V	1000 V	1000 V	Rated current	38 A	38 A	-
Rated surge voltage	8 kV	8 kV	8 kV				
Rated current	48 A	48 A	48 A				

Approvals per CSA			
Use group	B	C	D
Rated voltage	600 V	600 V	-
Rated current	31 A	31 A	-

Connection data

Clamping units	4	Connection 1	
Total number of potentials	4	Connection technology	Push-in CAGE CLAMP®
Number of connection types	1	Actuation type	Operating tool
Number of levels	1	Solid conductor	0.2 ... 10 mm² / 24 ... 8 AWG
		Fine-stranded conductor	0.2 ... 10 mm² / 24 ... 8 AWG
		Fine-stranded conductor; with insulated ferrule	0.25 ... 6 mm²
		Fine-stranded conductor; with uninsulated ferrule	0.25 ... 6 mm²
		Fine-stranded conductor; with twin ferrule	0.25 ... 2.5 mm²
		Strip length	13 ... 15 mm / 0.51 ... 0.59 inches
		Conductor connection direction to PCB	0°
		Pole number	4

Physical data

Pin spacing	7.5 mm / 0.295 inches
Width	31.8 mm / 1.252 inches
Height	23.6 mm / 0.929 inches
Height from the surface	19.6 mm / 0.772 inches
Depth	24.2 mm / 0.953 inches
Solder pin length	4 mm
Solder pin dimensions	1.5 x 1 mm
Drilled hole diameter with tolerance	2 (+0.1) mm

Mechanical data

Mounting type	Feed-through mounting
---------------	-----------------------



PCB contact		
PCB contact		THT
Solder pin arrangement		over the entire terminal strip (staggered)
Number of solder pins per potential		1

Material data		
Note (material data)		Information on material specifications can be found here
Color		gray
Material group		I
Insulation material (main housing)		Polyamide (PA66)
Flammability class per UL94		V0
Clamping spring material		Chrome-nickel spring steel (CrNi)
Contact material		Electrolytic copper (E _{Cu})
Contact Plating		Tin
Fire load		0.019 MJ
Weight		15.8 g

Environmental requirements		
Limit temperature range		-60 ... +105 °C
Processing temperature		-35 ... +60 °C
Continuous operating temperature		-60 ... +105 °C

Commercial data		
PU (SPU)		70 pcs
Packaging type		Box
Country of origin		PL
GTIN		4055143587105
Customs tariff number		85369010000

Product classification		
UNSPSC		39121409

Environmental Product Compliance		
RoHS Compliance Status		Compliant, No Exemption

Approvals / Certificates

General approvals



Approval	Standard	Certificate Name
CB DEKRA Certification B.V.	IEC 60947-7-4	NL-103311
CSA CSA Group	C22.2	70146882
KEMA/KEUR DEKRA Certification B.V.	EN 60947-7-4	71-113203
UL Underwriters Laboratories Inc.	UL 1059	E45172



Downloads

Environmental Product Compliance

Compliance Search

Environmental Product Compliance

2626-1104/020-000

↓

Documentation

Additional Information

Technical Section

03.04.2019

pdf

2027.26 KB

↓

CAD/CAE-Data

CAD data

2D/3D Models

2626-1104/020-000

↓

CAE data

ZUKEN Portal

2626-1104/020-000

↓

PCB Design

Symbol and Footprint via SamacSys

2626-1104/020-000

↓

Symbol and Footprint via Ultra Librarian

2626-1104/020-000

↓

1 Compatible Products

1.1 Optional Accessories

1.1.1 Tool

1.1.1.1 Operating tool



Item No.: 210-721

Operating tool; Blade: 5.5 x 0.8 mm; with a partially insulated shaft; multicoloured

Installation Notes

Conductor termination



Insert fine-stranded conductors and remove all conductor types via operating tool.

Conductor termination



Insert solid conductors via push-in termination.