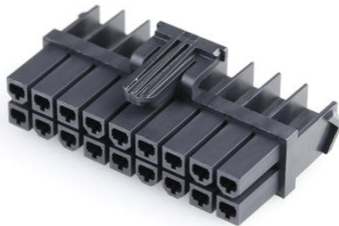




**Part Number :** [1727080018](#)  
**Product Description :** Mini-Fit TPA2 Receptacle Housing, 4.20mm Pitch, Dual Row, UL 94V-0, Low-Halogen, 18 Circuits  
**Series Number :** 172708  
**Status :** Active  
**Product Category :** Connector Housings



## Documents & Resources

### Drawings

- [1727080018 sd.pdf](#)
- [1727080001-PK-000.pdf](#)

### 3D Models and Design Files

- [STEP AP242](#)
- [SOLIDWORKS](#)
- [Creo](#)

### Specifications

- [AS-172718-0000-001.pdf](#)
- [2029880001-PS-000.pdf](#)
- [1727180003-TS-000.pdf](#)
- [2029880001-TS-000.pdf](#)

## Product Environment Compliance

### Compliance

GADSL/IMDS	Not Relevant
China RoHS	Not Relevant
EU ELV	Not Relevant
Low-Halogen Status	Not Relevant
REACH SVHC	Not Contained per D(2024)7663-DC (21 Jan 2025)
EU RoHS	Compliant per EU 2015/863

### Compliance Statements

- EU RoHS
- REACH SVHC
- Low-Halogen

### Industry Documents

- IPC 1752A Class C
- IPC 1752A Class D
- Molex Product Compliance Declaration
- IEC-62474
- chemSHERPA (xml)

### Substances of Interest

- PFAS

### EU RoHS Certificate of Compliance

### Additional Product Compliance Information

---

## Part Details

### General

Status	Active
Category	Connector Housings
Series	172708
Description	Mini-Fit TPA2 Receptacle Housing, 4.20mm Pitch, Dual Row, UL 94V-0, Low-Halogen, 18 Circuits
Application	Power, Wire-to-Board, Wire-to-Wire
Comments	See product specification for current derating information.
Product Name	Mini-Fit TPA2
UPC	191128361453

### Agency

UL	E29179
----	--------

### Physical

Circuits (maximum)	18
Color - Resin	Black
Flammability	94V-0
Gender	Receptacle

Glow-Wire Capable	No
Lock to Mating Part	Yes
Material - Resin	Nylon
Net Weight	3.216/g
Number of Rows	2
Packaging Type	Bag
Panel Mount	No
Pitch - Mating Interface	4.20mm
Pitch - Termination Interface	4.20mm
Polarized to Mating Part	Yes
Stackable	No
Temperature Range - Operating	-40° to +105°C

---

## Mates With / Use With

### Mates with Part(s)

Description	Part Number
Mini-Fit TPA2 and Mini-Fit Sigma Dual Row Plug Housings	<u><a href="#">172762</a></u>
Mini-Fit TPA2 and Mini-Fit Sigma Dual Row Plug Housings	<u><a href="#">172767</a></u>
Mini-Fit Jr. Plug Housings	<u><a href="#">5559</a></u>
Mini-Fit Vertical Dual Row Headers	<u><a href="#">172447</a></u>
Mini-Fit Jr. Right-Angle Dual Row Headers	<u><a href="#">172448</a></u>
Mini-Fit 4.20mm Pitch Dual Row Right-Angle Headers	<u><a href="#">35317</a></u>
Mini-Fit 4.20mm Pitch Dual Row Right-Angle Headers	<u><a href="#">35318</a></u>
Mini-Fit Jr. Vertical Dual Row Headers	<u><a href="#">43460</a></u>
Mini-Fit Jr. Right-Angle Dual Row Headers	<u><a href="#">44130</a></u>
Mini-Fit Jr. Vertical, Dual Row, Reflow Solder Capable Headers	<u><a href="#">46207</a></u>
Mini-Fit Jr. Right-Angle Dual Row	<u><a href="#">46991</a></u>

Reflow Solder Capable Headers	
Mini-Fit Jr. Vertical Headers	<u>5566</u>
Mini-Fit Jr. Right-Angle Headers	<u>5569</u>
Mini-Fit Jr. Dual Row Headers	<u>87427</u>
Mini-Fit Jr. Dual Row Test Plugs	<u>44281</u>

### Use with Part(s)

Description	Part Number
Mini-Fit TPA2 Terminal Position Assurance (TPA) Retainer, 4.20mm Pitch, UL 94V-0, Low-Halogen, 9 Circuits, White	<u>1727090009</u>
Mini-Fit TPA2/Sigma Female Crimp Terminals	<u>172718</u>
Mini-Fit TPA2/Sigma Female Crimp Terminals	<u>202988</u>
Pre-Crimped Lead Mini-Fit Sigma/TPA2 Female-to-Mini-Fit Sigma/TPA2 Female	<u>219670</u>
Pre-Crimped Lead Mini-Fit Sigma/TPA2 Female-to-Pigtail	<u>219671</u>
Mini-Fit TPA2/Sigma Female Low Mating Force Crimp Terminals	<u>221442</u>
Mini-Fit TPA2 Connector Position Assurance (CPA) Retainers	<u>203603</u>

---

This document was generated on Sep 24, 2025