



Pushing Performance
Since 1945

Contact Block 1NO

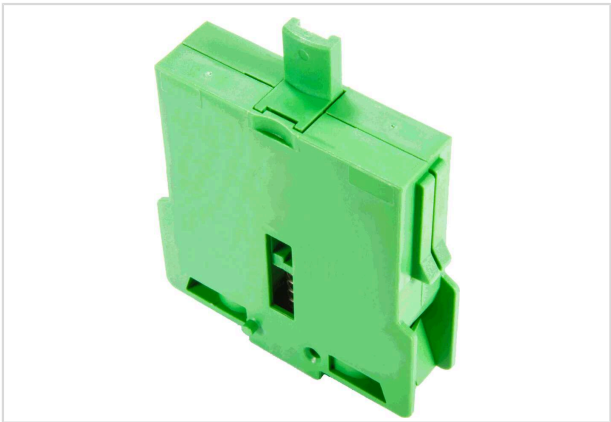


Image is for illustration purposes only. Please refer to product description.

| | |
|--------------------|---|
| Part number | 09 45 453 0200 |
| Specification | Contact Block 1NO |
| HARTING eCatalogue | https://b2b.harting.com/09454530200 |

Identification

| | |
|---------------|--|
| Category | Operator interfaces |
| Element | Contact block |
| Specification | Closer Standard |
| Features | 1 million switching cycles at nominal load Positive opening according to EN 60947-5-1 |

Version

| | |
|--------------------|-------------------|
| Termination method | Screw termination |
| Number of contacts | 2 |

Technical characteristics

| | |
|---------------------------------------|---------------------------------|
| Conductor cross-section | 0.5 ... 2.5 mm ² |
| Actuation path | 6 mm |
| Rated current | ≥0.001 A |
| Rated current | under laboratory conditions |
| Rated voltage | ≥5 V |
| Rated impulse voltage | 4 kV |
| Conditional short-circuit current | 1,000 A |
| Short-circuit device (recommendation) | SCPD 16 A, Char. C |
| Overvoltage category | III (protection by low voltage) |
| Contact resistance | <20 mΩ |
| Stripping length | 9 mm |
| Tightening torque | 0.8 ... 1 Nm Screw terminal |



Pushing Performance
Since 1945

Technical characteristics

| | |
|--|----------------------------------|
| Operating temperature | -30 ... +85 °C Without light |
| | -30 ... +65 °C with LED lighting |
| Storage temperature | -50 ... +85 °C |
| Degree of protection acc. to IEC 60529 | IP20 |
| Bounce time | <10 ms |

Material properties

| | |
|--------------------------------------|----------------------|
| Colour (insert) | Green |
| Material (contacts) | Copper alloy |
| Surface (contacts) | Ag over Ni |
| RoHS | compliant |
| ELV status | compliant |
| China RoHS | e |
| REACH Annex XVII substances | Not contained |
| REACH ANNEX XIV substances | Not contained |
| REACH SVHC substances | Not contained |
| California Proposition 65 substances | Not contained |
| Fire protection on railway vehicles | EN 45545-2 (2020-08) |
| Requirement set with Hazard Levels | R22 (HL 1-3) |
| | R23 (HL 1-3) |

Specifications and approvals

| | |
|----------------|--|
| Specifications | EN 60947-5-1 |
| UL / CSA | UL 60947-5-1 NKCR.E534795 |
| | CSA C22.2 No. 60947-5-1:22 NKCR7.E534795 |
| | UL 60947-1 NKCR.E534795 |
| | CSA C22.2 No. 60947-1:22 NKCR7.E534795 |

Commercial data

| | |
|--------------------------------|---------------|
| Packaging size | 20 |
| Net weight | 12 g |
| Country of origin | Germany |
| European customs tariff number | 85365080 |
| GTIN | 5713140450226 |
| ETIM | EC000041 |



Pushing Performance
Since 1945

Commercial data

| | |
|--------|---------------------------------|
| eCl@ss | 27371302 Auxiliary switch block |
|--------|---------------------------------|