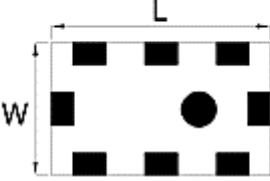
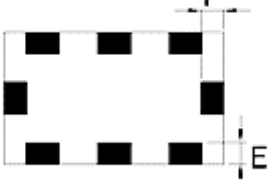






# MULTILAYER CERAMIC LOW PASS FILTER RCF-915.000-26000-2012-W-TR

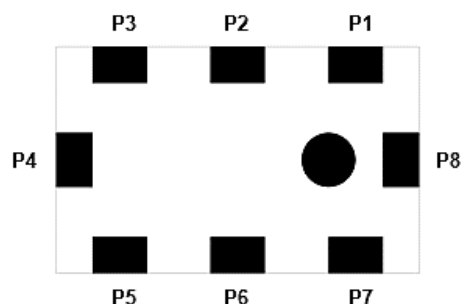
page 1 of 3

Items		Specification	Unit
Frequency Range		902.000 ~ 928.000	MHz
Insertion Loss, max		0.6	dB
Attenuation, min	1804 ~ 1856 MHz	30	dB
	2706 ~ 2774 MHz	30	dB
VSWR, max		2	-
Impedance		50	$\Omega$
Operating Temperature Range		-40 ~ +85	°C
Storage Temperature Range		-40 ~ +85	°C

## Dimension

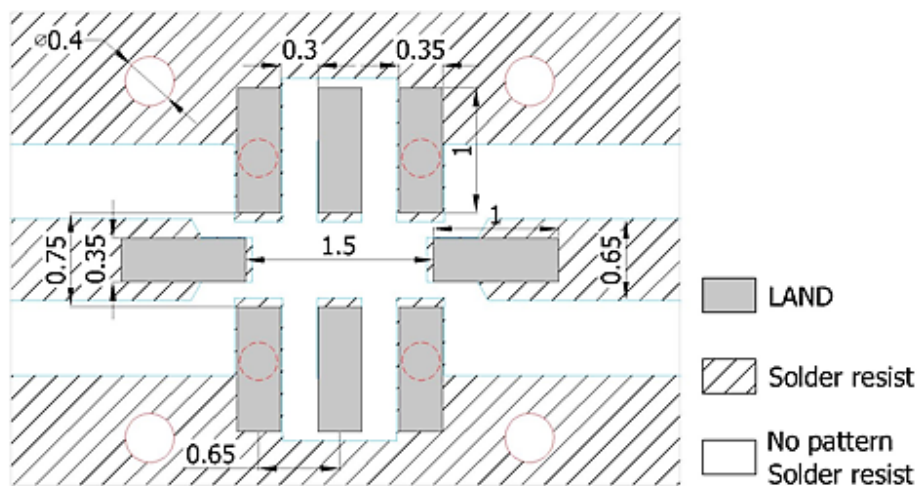
Figure		Symbol	Dimension (mm)
Top view		L	$2.00 \pm 0.15$
		W	$1.25 \pm 0.15$
Bottom view		T	$0.95 \pm 0.15$
		A	$0.20 \pm 0.15$
Side view		B	$0.30 \pm 0.15$
		C	$0.35 \pm 0.15$
Side view		D	$0.65 \pm 0.15$
		E	$0.20 \pm 0.15$
Side view		F	$0.20 \pm 0.15$
		G	$0.475 \pm 0.15$
Side view		H	$0.30 \pm 0.15$

## Pin Configuration



PIN	Definition	PIN	Definition
P1	Ground	P5	Ground
P2	NC	P6	NC
P3	Ground	P7	Ground
P4	Input / output	P8	Input / output

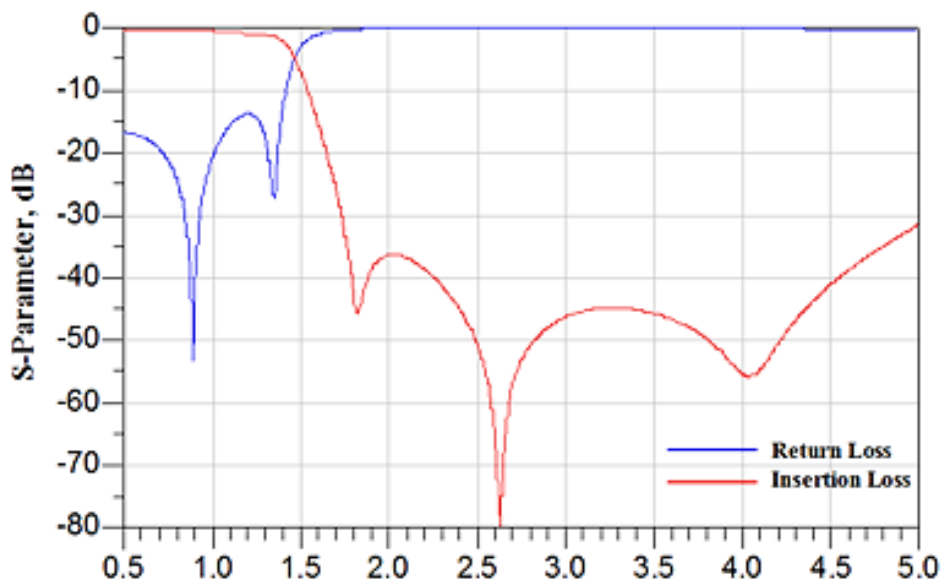
## Soldering Pattern



Unit: mm

Line width to be designed to match 50  $\Omega$  characteristic impedance, depending on PCB material and thickness.

## Frequency Characteristics



## APPROVAL

DRAWN BY	LP, October 28, 2017
APPROVED BY	JL, October 28, 2017
REVISION	A, Initial Release

Raltron Electronics / RAMI Technology USA, LLC, including its affiliates, employees, agents and other persons acting on its behalf (collectively Raltron/RAMI Tech), disclaim any and all liability for any errors or inaccuracies contained in this data sheet. While Raltron/RAMI Tech has made every reasonable effort to ensure the accuracy of all product information, specifications and data contained herein, Raltron/RAMI Tech does not guarantee that the information is accurate, reliable or current. The product information is provided only for reference purposes only and is subject to change, correction or revision, at any time without notice. Raltron/RAMI Tech does not assume any liability arising out of an application or use of any product described herein and disclaims any warranties expressed or implied. The user of products in such applications shall assume all risks of such use and will agree to hold Raltron/RAMI Tech harmless against all damages.

Copyright © 2016, Raltron Electronics / RAMI Technology USA, LLC. All rights reserved. No part of this document may be reproduced in any form without the prior written permission of Raltron Electronics / RAMI Technology USA, LLC.