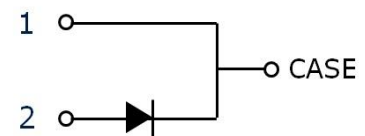


CoolSiC™ Automotive Schottky Diode 650V G5

650V/16A Silicon Carbide Schottky Diode in D2PAK (Real 2 Pins)

Features

- Revolutionary semiconductor material - Silicon Carbide
- Benchmark switching behavior
- No reverse recovery/No forward recovery
- Temperature independent switching behavior
- High surge current capability
- Pb-free lead plating; RoHS compliant
- Junction Temperature range from -40°C to 175°C
- System efficiency improvement over Si diodes
- System cost/size savings due to reduced cooling requirements
- Enabling higher frequency/increased power density solutions
- Higher system reliability due to lower operating temperatures
- Reduced EMI



Potential Applications

- Booster/DCDC Converter
- On board Charger/PFC



Product Validation

“Qualified for Automotive Applications. Product Validation according to AEC-Q100/101”

Description

The 5th Generation CoolSiC™ Automotive Schottky Diode represents Infineon leading edge technology for Silicon Carbide Schottky Barrier diodes. Thanks to a compact design and a technology based on thin wafers, this family of products shows improved efficiency over all load conditions resulting from both its thermal characteristics and low figure of merit ($Q_C \times V_f$). This product family has been designed to complement Infineon's IGBT and CoolMOS™ portfolio. This ensures meeting the most stringent application requirements in the 650V voltage class.

Product Information	
Ordering Code	AIDK16S65C5
Marking	AD1665C5
Package	PG-TO263-2-1
SP Number	SP001725240

Parameter	Value/Unit
$V_{DC,max}$	650 V
$I_F; T_C \leq 124^\circ C$	16 A
$Q_C; V_R = 400 V$	23 nC
$E_C; V_R = 400 V$	5.3 μJ
$T_{j,max}$	175 $^\circ C$

Pin	Definition
Pin 1, case	Cathode
Pin 2	Anode



Table of Contents

Table of Contents

Features..... 1

Potential Applications..... 1

Product Validation..... 1

Description..... 1

Table of Contents..... 2

1 Maximum Ratings..... 3

2 Thermal Characteristics..... 4

3 Electrical Characteristics..... 5

4 Electrical Characteristics Diagrams..... 6

5 Package Outlines..... 9

Revision History..... 10

Maximum Ratings

1 Maximum Ratings

Table 1 Maximum ratings¹

Parameter	Symbol	Value	Unit
Repetitive peak reverse voltage	V_{RRM}	650	V
Continuous forward current for $R_{thJC,max}$ $T_C = 129^\circ\text{C}$, $D=1$	I_F	16	A
Surge non-repetitive forward current, sine halfwave $T_C = 25^\circ\text{C}$, $t_p=10\text{ms}$ $T_C = 150^\circ\text{C}$, $t_p=10\text{ms}$	$I_{F,SM}$	63 51	A
Non-repetitive peak forward current $T_C = 25^\circ\text{C}$, $t_p=10\mu\text{s}$	$I_{F,max}$	637	A
i^2t value $T_C = 25^\circ\text{C}$, $t_p=10\text{ms}$ $T_C = 150^\circ\text{C}$, $t_p=10\text{ms}$	$\int i^2 dt$	20 13	A^2s
Diode dv/dt ruggedness $V_R=0\dots480\text{V}$	dv/dt	100	V/ns
Power dissipation $T_C = 25^\circ\text{C}$	P_{tot}	79	W
Operating temperature	T_j	$-40\dots175$	$^\circ\text{C}$
Storage temperature	T_{stg}	$-55\dots150$	$^\circ\text{C}$
ESD Human body model, $R=1.5\text{ k}\Omega$, $C=100\text{ pF}$ Charged device model		8 2	kV

Thermal Characteristics

2 Thermal Characteristics

Table 2 Thermal Characteristics¹

Parameter	Symbol	Values			Unit	Note/Test condition
		Min.	Typ.	Max.		
Thermal resistance, junction–case ²	R_{thJC}	-	1.5	1.9	K/W	
Thermal resistance, junction-ambient ²	R_{thJA}	-	-	62	K/W	

Electrical Characteristics

3 Electrical Characteristics

Table 3 Static Characteristics

Parameter	Symbol	Values			Unit	Note/Test condition
		Min.	Typ.	Max.		
DC blocking voltage	V_{DC}	650	-	-	V	$T_j = 25^{\circ}\text{C}$, $I_R = 0.09\text{ mA}$
Diode forward voltage ³	V_F	-	1.5	1.7		$T_j = 25^{\circ}\text{C}$, $I_F = 16\text{ A}$
		-	1.8	2.1		$T_j = 150^{\circ}\text{C}$, $I_F = 16\text{ A}$
Reverse current	I_R	-	3	90	μA	$V_R = 650\text{ V}$, $T_j = 25^{\circ}\text{C}$
		-	19	-		$V_R = 650\text{ V}$, $T_j = 150^{\circ}\text{C}$

Table 4 Dynamic Characteristics at $T_j=25^{\circ}\text{C}$ unless noted otherwise

Parameter	Symbol	Values			Unit	Note/Test condition
		Min.	Typ.	Max.		
Total capacitive charge	Q_C	-	23	-	nC	$V_R = 400\text{ V}$, $di/dt = 200\text{ A}/\mu\text{s}$, $I_F \leq I_{F,MAX}$, $T_j = 150^{\circ}\text{C}$
Total capacitance	C	-	483	-	pF	$V_R = 1\text{ V}$, $f = 1\text{ MHz}$
		-	57	-		$V_R = 300\text{ V}$, $f = 1\text{ MHz}$
		-	53	-		$V_R = 600\text{ V}$, $f = 1\text{ MHz}$

Footnotes:

¹ The parameter is not subject to production test- verified by design/characterization.

² $R_{th,JC}$ defined as per JESD-51-14. $R_{th,JA}$ defined as per JESD-51-5/7.

³ Only the value at 25°C is subject to production test. The value at 150°C is only verified by design/characterization.

Electrical Characteristics Diagrams

4 Electrical Characteristics Diagrams

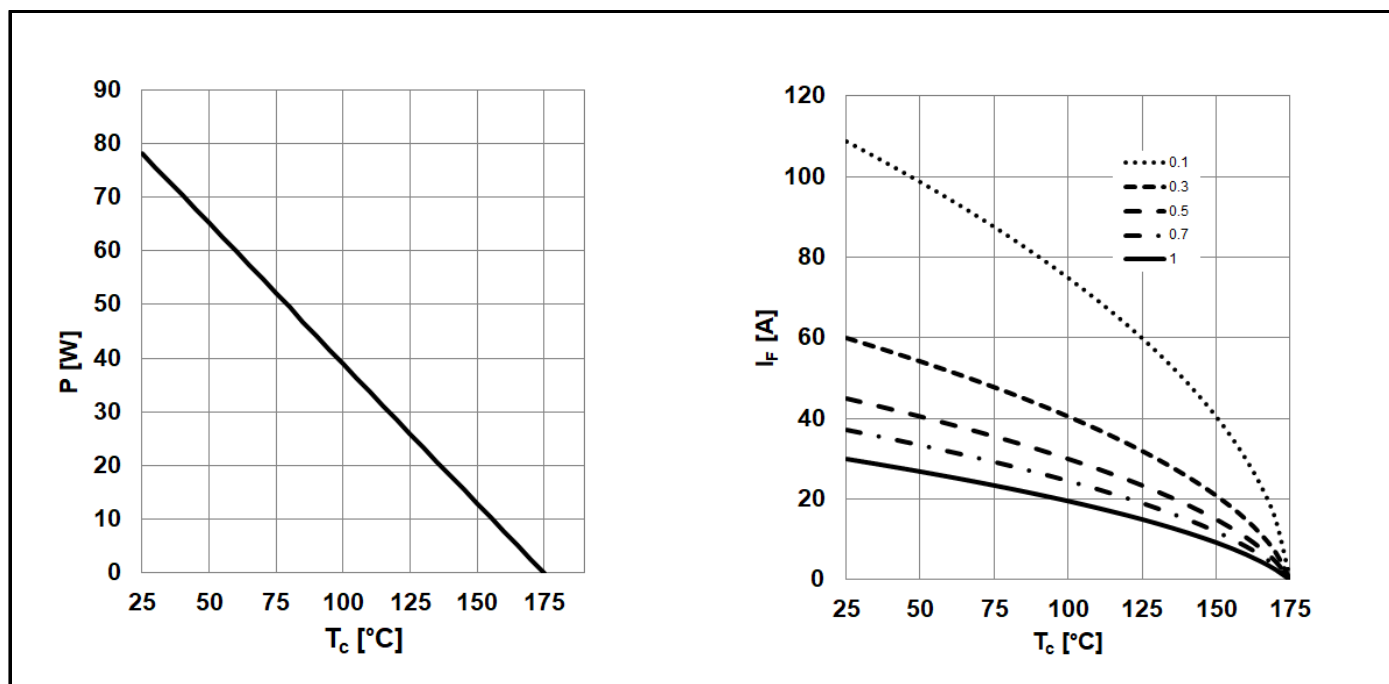


Figure 1 (LEFT) Power dissipation; $P_{\text{tot}} = f(T_c)$; $R_{\text{thJC,max}}$
(RIGHT) Diode forward current; $I_F = f(T_c)$; $T_j \leq 175$ °C; $R_{\text{thJC,max}}$; parameter: D =duty cycle

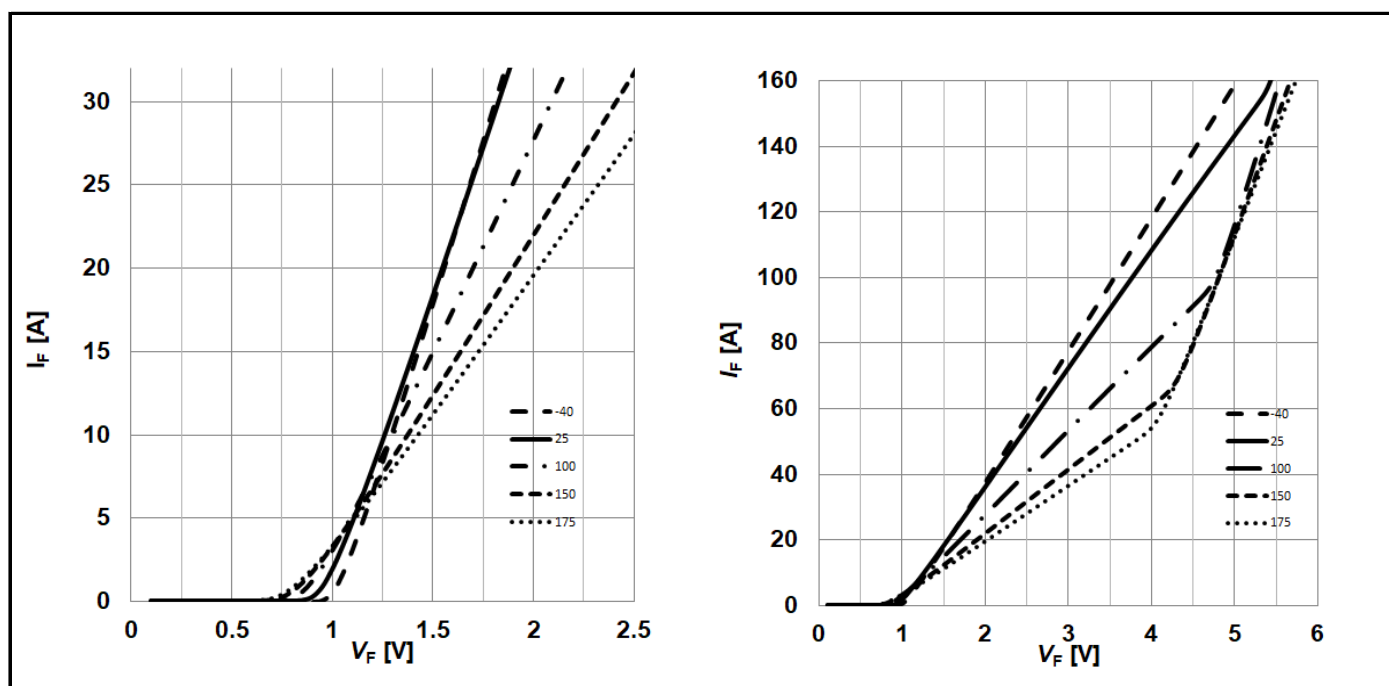


Figure 2 (LEFT) Typical forward characteristic; $I_F = f(V_F)$; $t_p = 20$ μ s; parameter: T_j
(RIGHT) Typical forward characteristics in surge current; $I_F = f(V_F)$; $t_p = 20$ μ s; parameter: T_j

Electrical Characteristics Diagrams

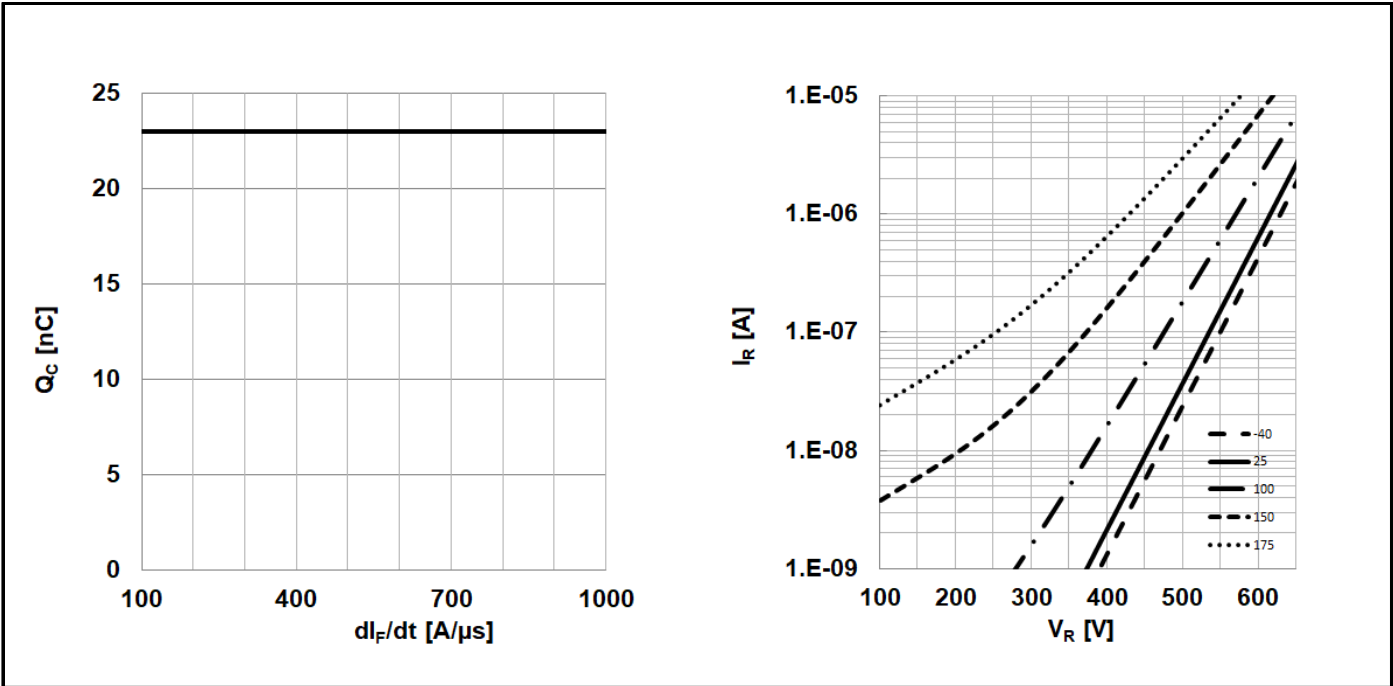


Figure 3 (LEFT) Typical capacitive charge versus current slope (only capacitive charge, guaranteed by design); $Q_C = f(di_F/dt)$; $T_j = 150^{\circ}\text{C}$; $V_R = 400\text{V}$; $I_F \leq I_{F,max}$
(RIGHT) Typical reverse current versus reverse voltage; $I_R = f(V_R)$; parameter: T_j

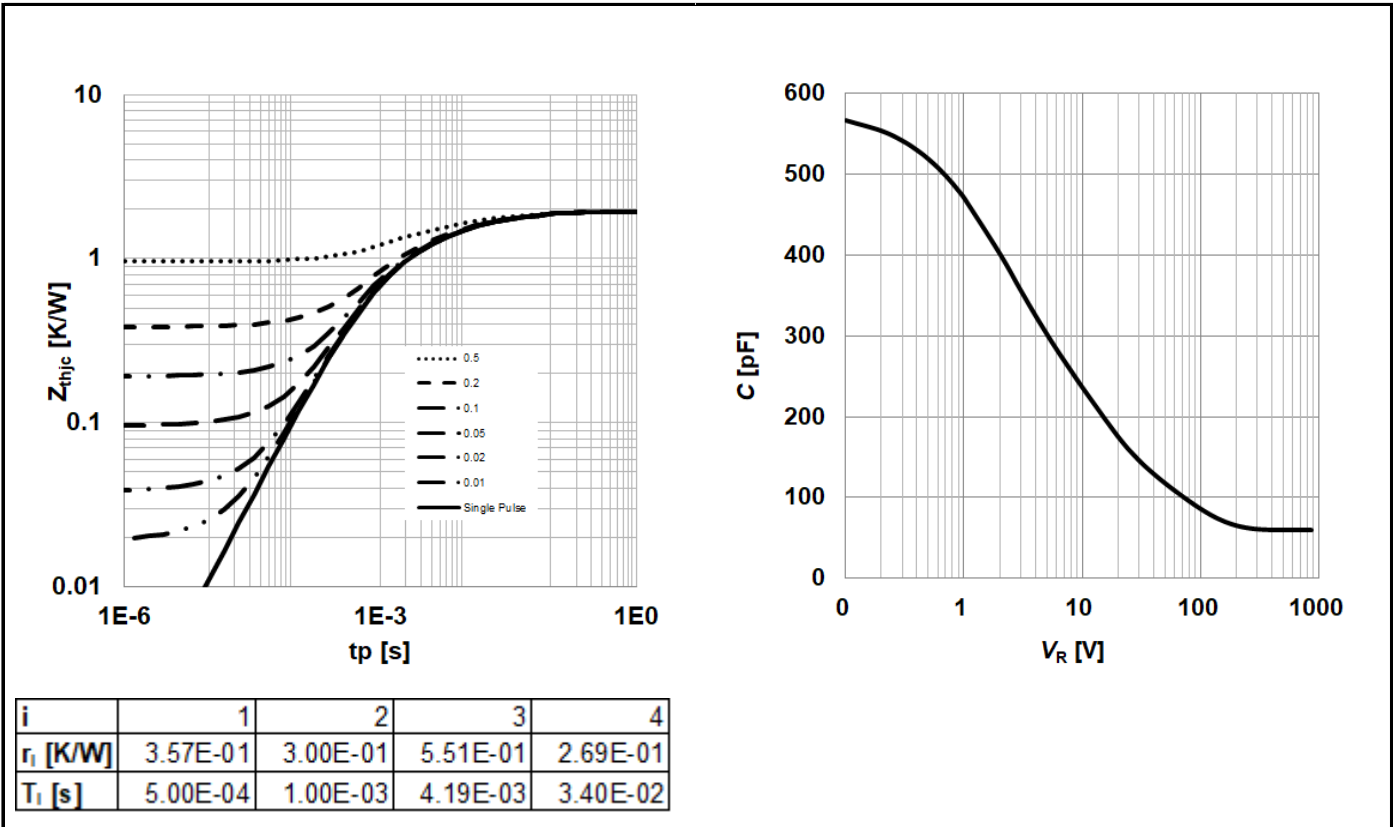


Figure 4 (LEFT) Max. Transient thermal impedance; $Z_{thJC} = f(t_p)$; parameter: $D = t_p/T$
(RIGHT) Typ. Capacitance vs. Reverse voltage; $C = f(V_R)$; $T_j = 25^{\circ}\text{C}$; $f = 1\text{ MHz}$

Electrical Characteristics Diagrams

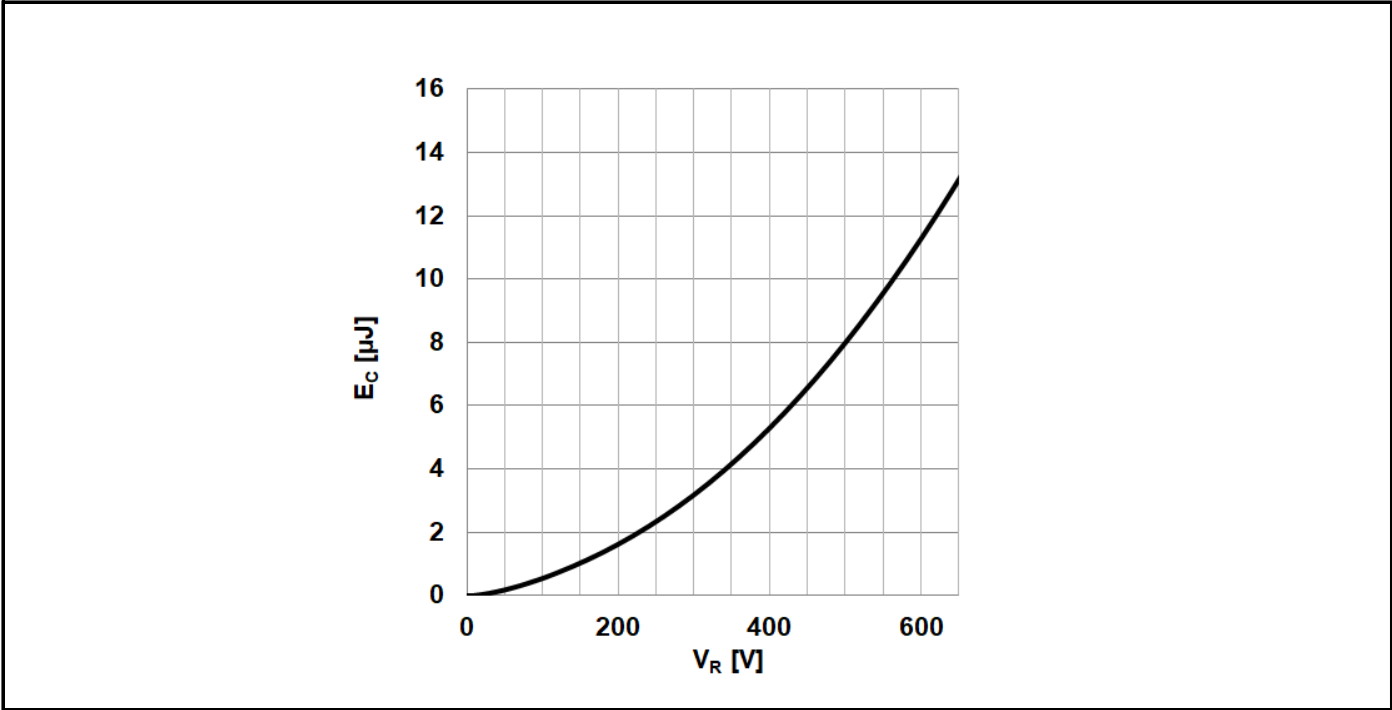


Figure 5 Typical capacitance stored energy; $E_C = f(V_R)$

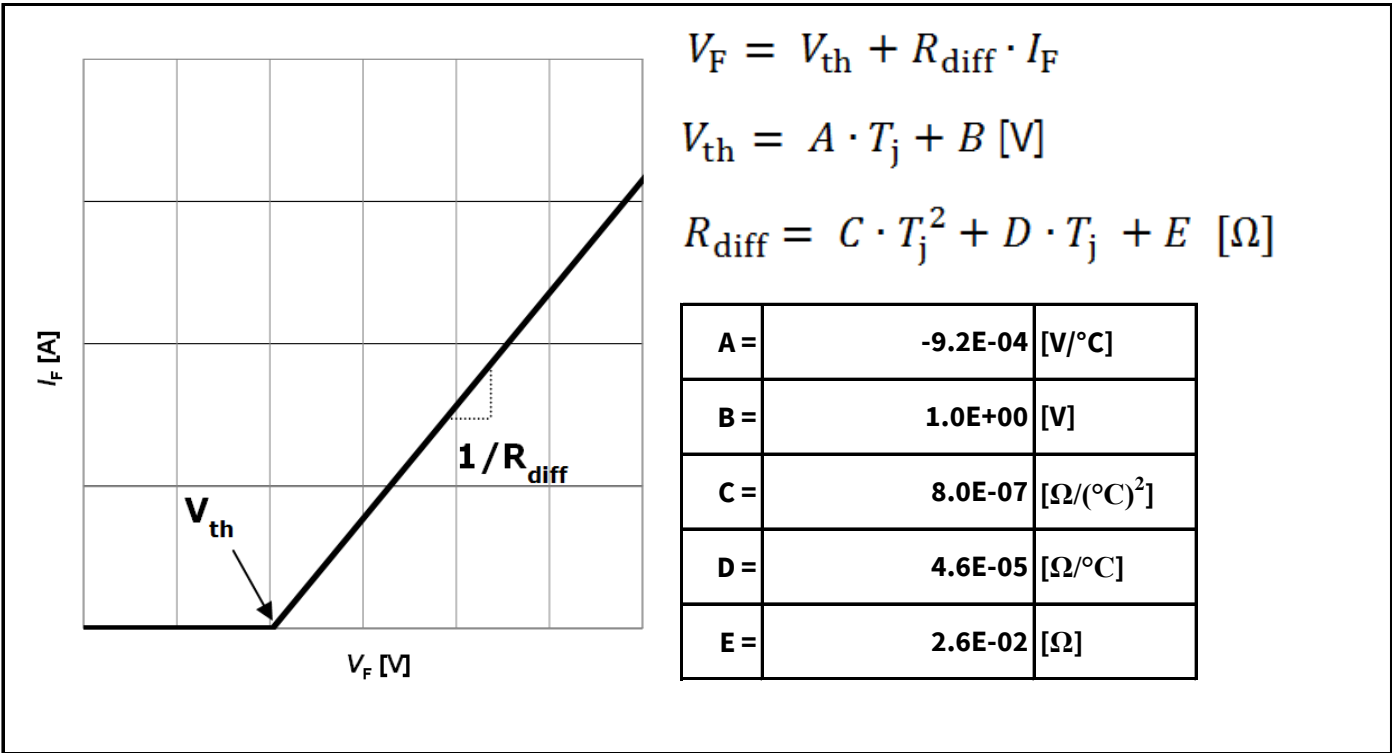


Figure 6 Simplified forward characteristics model $V_F = f(I_F)$;
-40°C < Tj < 175°C; IF < 32 A

Package Outlines

5 Package Outlines

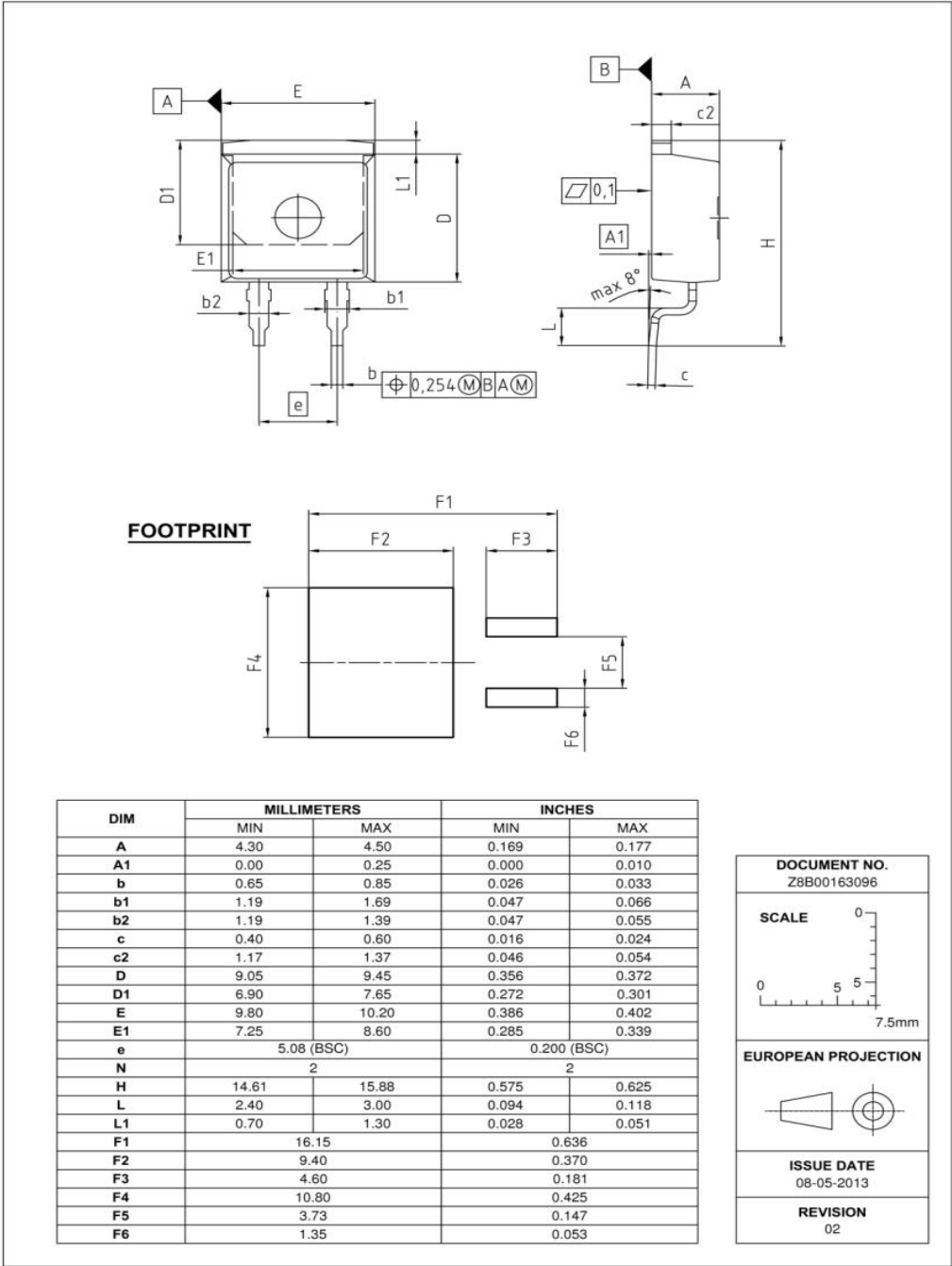


Figure 6 Package outline of PG-TO263-2-1 led

CoolSiC™ Automotive Schottky Diode 650V G5
650V/16A Silicon Carbide Schottky Diode in D2PAK (Real 2 Pins)



Revision History

Revision History

Document Version	Date of Release	Description of changes
V3.0	21.07.2021	1st release of Data Sheet

CoolSiC™ Automotive Schottky Diode 650V G5

650V/16A Silicon Carbide Schottky Diode in D2PAK (Real 2 Pins)



Trademarks

All referenced product or service names and trademarks are the property of their respective owners.

IMPORTANT NOTICE

Published by
Infineon Technologies AG
81726 München, Germany

© 2021 Infineon Technologies AG
.All Rights Reserved.

Do you have a question about this document?
Email: erratum@infineon.com

Document reference

The information given in this document shall in no event be regarded as a guarantee of conditions or characteristics delivery terms and conditions and prices please contact your nearest Infineon Technologies office (www.infineon.com).

With respect to any examples, hints or any typical values stated herein and/or any information regarding the application of the product, Infineon Technologies hereby disclaims any and all warranties and liabilities of any kind, including without limitation warranties of non-infringement of intellectual property rights of any third party.

In addition, any information given in this document is subject to customer's compliance with its obligations stated in this document and any applicable legal requirements, norms and standards concerning Technologies, Infineon Technologies' products may customer's products and any use of the product of Infineon Technologies in customer's applications.

The data contained in this document is exclusively intended for technically trained staff. It is the responsibility of customer's technical departments to evaluate the suitability of the product for the intended application and the completeness of the product information given in this document with respect to such application.