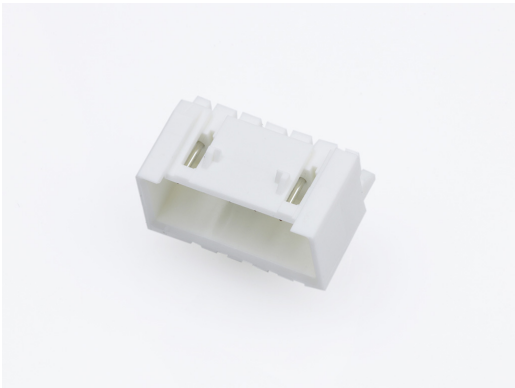




Part Number : [534260610](#)
Product Description : 2.50mm Pitch, Mini-Lock PCB Header, Single Row, Right-Angle, Through Hole with Kinked Pins, Tin Plating, Positive Lock, 6 Circuits, Tray, 3.40mm PC Tail Length, Natural
Series Number : 53426
Status : Active
Product Category : PCB Headers and Receptacles



Documents & Resources


Drawings
[534260610_sd.pdf](#)

3D Models and Design Files
[534260610.dxf](#)
[534260610.pdf](#)
[534260610_stp.zip](#)

Specifications
[SPK-53426-002-001.pdf](#)
[PS-51103-005-001.pdf](#)
[511630000-PS-000.pdf](#)
[511631000-PS-000.pdf](#)

Product Environment Compliance

Compliance

GADSL/IMDS	Compliant with Exemption 44; 34
China RoHS	
EU ELV	Not Relevant
Low-Halogen Status	Not Low-Halogen per IEC 61249-2-21
REACH SVHC	Not Contained per D(2024)6225-DC (07 Nov 2024)
EU RoHS	Compliant per EU 2015/863

Multiple Part Product Compliance Statements
- Eu RoHS

- REACH SVHC

- Low-Halogen

Multiple Part Industry Compliance Documents

- IPC 1752A Class C

- IPC 1752A Class D

- Molex Product Compliance Declaration

- IEC-62474

- chemSHERPA (xml)

EU RoHS Certificate of Compliance

Part Details

General

Status	Active
Category	PCB Headers and Receptacles
Series	53426
Description	2.50mm Pitch, Mini-Lock PCB Header, Single Row, Right-Angle, Through Hole with Kinked Pins, Tin Plating, Positive Lock, 6 Circuits, Tray, 3.40mm PC Tail Length, Natural
Application	Signal, Wire-to-Board
Component Type	PCB Header
Product Name	Mini-Lock
UPC	800754368780

Agency

CSA	LR19980
UL	E29179

Electrical

Current - Maximum per Contact	3.0A
Voltage - Maximum	250V AC (RMS)/DC

Physical

Breakaway	No
Circuits (Loaded)	6

Circuits (maximum)	6
Color - Resin	Natural
Durability (mating cycles max)	30
Flammability	94V-0
Glow-Wire Capable	No
Keying to Mating Part	None
Lock to Mating Part	Yes
Material - Metal	Phosphor Bronze
Material - Plating Mating	Tin
Material - Plating Termination	Tin
Material - Resin	Polyester
Net Weight	847.500/mg
Number of Rows	1
Orientation	Right Angle
Packaging Type	Tray
PC Tail Length	3.40mm
PCB Locator	No
PCB Retention	Yes
PCB Thickness - Recommended	1.60mm
Pitch - Mating Interface	2.50mm
Polarized to Mating Part	Yes
Polarized to PCB	No
Shrouded	Fully
Stackable	No
Temperature Range - Operating	-55° to +105°C
Termination Interface Style	Through Hole - Kinked Pin

Mates With / Use With

Mates with Part(s)

Description	Part Number
Mini-Lock Single Row Receptacle Housings	<u>51163</u>
Mini-Lock-to-Mini-Lock Off-the-Shelf (OTS) Cable Assemblies	<u>15137</u>

This document was generated on Feb 06, 2025