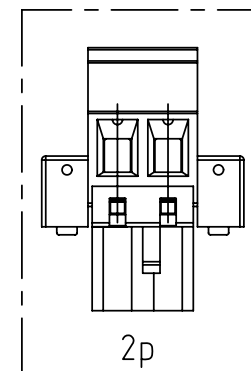
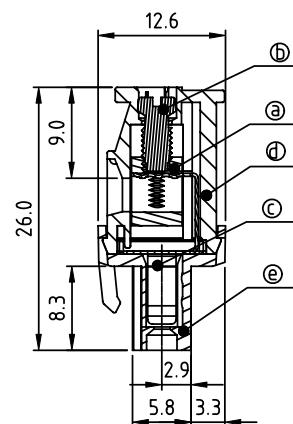
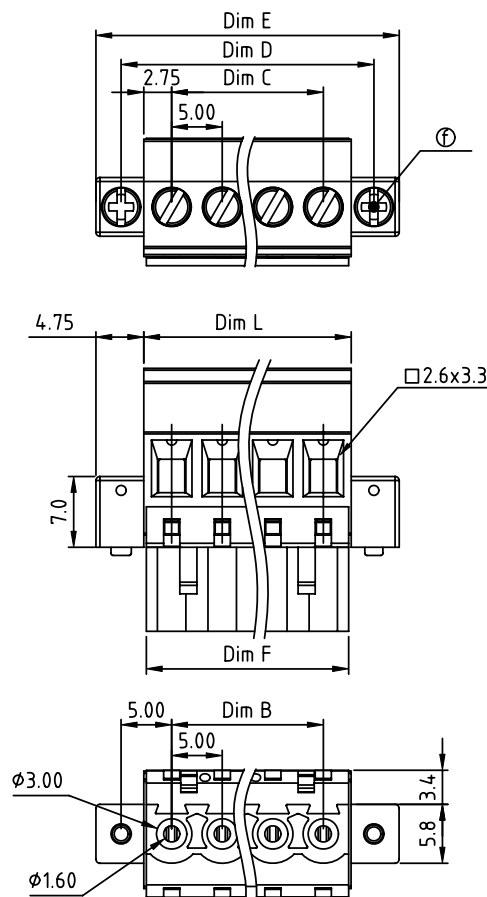


PRODUCT NUMBER

PITCH

TSxx71xC00J0G

5.00 mm



Material

- Item① Clamp: Brass(CuZn) Ni plated
- Item② Terminal screw: Steel Zinc plating "-" slot type
- Item③ Female contact: PhBz Tin plated
- Item④ Top body: Thermoplastic (UL94V-0)
- Item⑤ Bottom body: Thermoplastic (UL94V-0)
- Item⑥ With flang screw: Steel Zinc plating "+/-" combination type M2.5

Electrical cULus/VDE/TUV

- Voltage rating: 300VAC/300VAC/300VAC
- Current rating: 15A/17A/15A
- Wire range: 2.5mm²/0.34-2.5mm²
- Solid wire(AWG): 12-24
- Stranded wire(AWG): 12-24
- Torque: 3.5Lb-In./0.5Nm/0.4Nm
- Screw: M3
- Wire strip length: 6-7mm
- Withstanding Voltage: 1.6KV/2.5KV/2.5KV
- Operating temperature: -40°C to +115°C
- Safety approval: US VDE TUV

DIMENSION

N = Number of poles

Dim L	NX5.0±0.5
Dim B	(N-1)X5.0
Dim C	(N-1)X5.0
Dim D	(N-1)X5.0+10.0
Dim E	(N-1)X5.0+15.0
Dim F	NX5.0

Poles	Tolerance
2p-6p	±0.15
7p-12p	±0.25
13p-18p	±0.30
19p-24p	±0.40

PART NO.: TS xx 71 x C 00J0 G

Solid block
No. of poles
02 2 poles
03 3 poles
...
24 24 poles

Color
0 Black (RAL9005)
2 Red (RAL3001/D)
3 Orange(RAL2011/P)
4 Yellow(RAL1018/A)
5 Green(RAL6018/T)
6 Blue (RAL5015/A)
8 Grey(RAL7035/D)
9 White(RAL1102)
C Green(RAL6018/U)

RoHS compliant
(lead<4%)
In copper Alloy

mat'l. code				surface ASME Y14.5	tolerance ASME Y14.5	projection	product family			
ltr	ecn	no	dr	date	tolerances unless otherwise specified	angles	TERMINAL BLOCK			
					X.±0.5	MM	title			
					X.X±0.3		TERMINAL BLOCK			
					X'±1"		PLUGGABLE PLUG,HOOK ON ENTRY SIDE,WITH FLANGE			
					dr	EVIN ZHONG 041914	dwg no			
					enr	EVIN ZHONG 041914	sheet 1 of 1 size			
					chr	HANKE FENG 041914	TSxx71xC00J0G			
					appd	SHI JUN 041914	A4			
sheet index				revision	A		type			
				sheet	1		CUSTOMER Drawing			