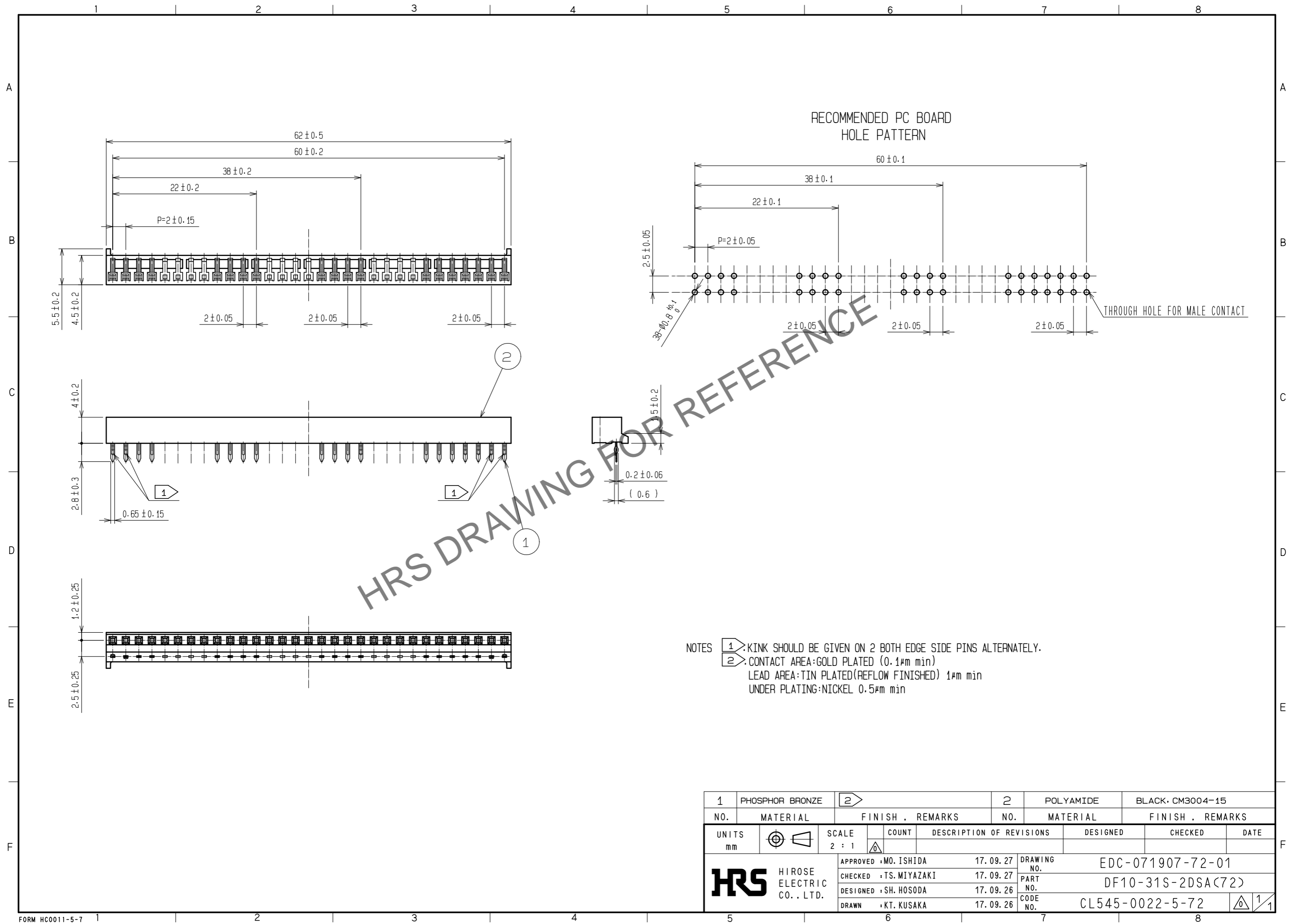


Mar.1.2026 Copyright 2026 HIROSE ELECTRIC CO., LTD. All Rights Reserved.
 In case of consideration for using Automotive equipment / device which demand high reliability, kindly contact our sales window correspondents.



HRS DRAWING FOR REFERENCE

- NOTES
- 1 KINK SHOULD BE GIVEN ON 2 BOTH EDGE SIDE PINS ALTERNATELY.
 - 2 CONTACT AREA: GOLD PLATED (0.1μm min)
 LEAD AREA: TIN PLATED (REFLOW FINISHED) 1μm min
 UNDER PLATING: NICKEL 0.5μm min

1	PHOSPHOR BRONZE	2	POLYAMIDE	BLACK, CM3004-15				
NO.	MATERIAL	FINISH . REMARKS	NO.	MATERIAL	FINISH . REMARKS			
UNITS	mm	SCALE	2 : 1	COUNT	DESCRIPTION OF REVISIONS	DESIGNED	CHECKED	DATE
HIROSE ELECTRIC CO., LTD.		APPROVED	: MO. ISHIDA	17.09.27	DRAWING NO.	EDC-071907-72-01		
		CHECKED	: TS. MIYAZAKI	17.09.27	PART NO.	DF10-31S-2DSA(72)		
		DESIGNED	: SH. HOSODA	17.09.26	CODE NO.	CL545-0022-5-72		
		DRAWN	: KT. KUSAKA	17.09.26				