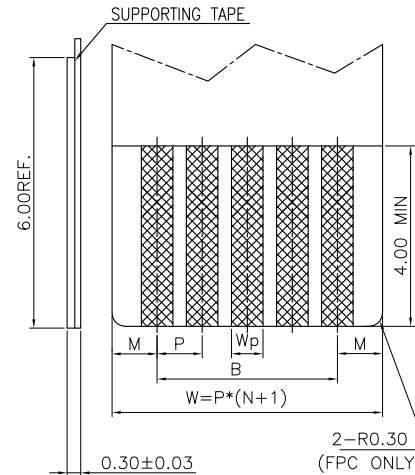
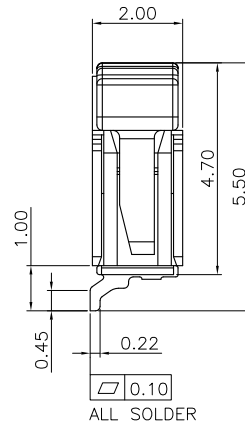
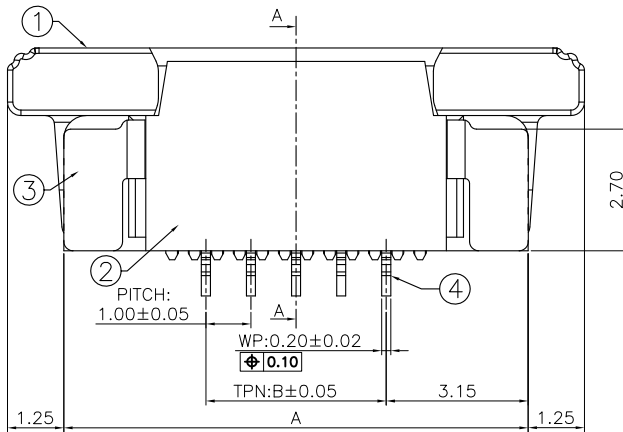
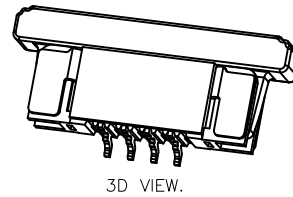
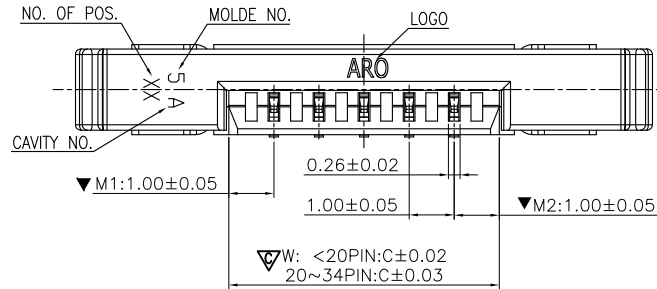


This document is the property of and embodies CONFIDENTIAL and PROPRIETARY information of AOR. No part of the information shown on this document may be used in any way or disclosed to others without the written consent of AOR. © 2019 AOR



NOTE:
 1. ALL MATERIAL MUST BE COMPLY WITH SS-00259 OR RoHS.
 2. "∇" MARK IS IMPORTANT DIMENSIONS
 3. "∇" MARK IS CPK AND X-R DIMENSION
 4. PART NO. LEGEND:
 F52R-1A**1-110**

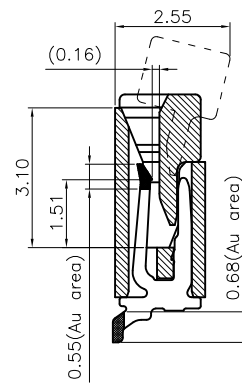
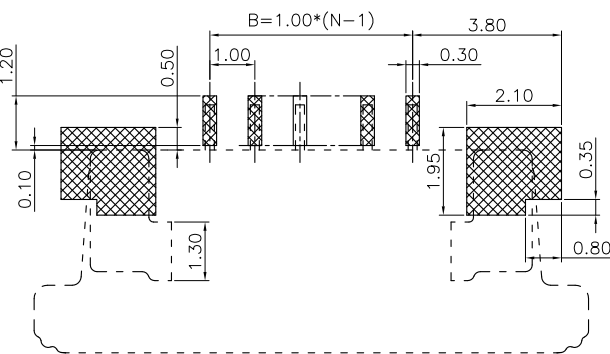
NO. OF POSITIONS
 7H: PHOSPHOR BRONZE
 0.05um MIN Au/Au Area)
 7A: PHOSPHOR BRONZE
 MATTER TIN
 1A: LCP NATURAL

DIMENSION LIST:

NO. OF POS.	A	B	C	NO. OF POS.	A	B	C
4	9.30	3.00	5.00	20	25.30	19.00	21.01
5	10.30	4.00	6.00	21	26.30	20.00	22.01
6	11.30	5.00	7.00	22	27.30	21.00	23.01
7	12.30	6.00	8.00	23	28.30	22.00	24.01
8	13.30	7.00	9.00	24	29.30	23.00	25.01
9	14.30	8.00	10.00	25	30.30	24.00	26.01
10	15.30	9.00	11.00	26	31.30	25.00	27.01
11	16.30	10.00	12.00	27	32.30	26.00	28.01
12	17.30	11.00	13.00	28	33.30	27.00	29.01
13	18.30	12.00	14.00	29	34.30	28.00	30.01
14	19.30	13.00	15.00	30	35.30	29.00	31.01
15	20.30	14.00	16.00	31	36.30	30.00	32.01
16	21.30	15.00	17.00	32	37.30	31.00	33.01
17	22.30	16.00	18.00	33	38.30	32.00	34.01
18	23.30	17.00	19.00	34	39.30	33.00	35.01
19	24.30	18.00	20.00				

APPLICABLE FPC/FCC

	FPC	FFC
M	1.0±0.05	1.0±0.05
P	1.0±0.03	1.0±0.03
B	B±0.05	B±0.05
W	W±0.05	W±0.05
Wp	0.75±0.03	0.70±0.03

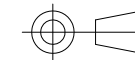


SECTION A-A

UNLESS OTHERWISE SPECIFIED TOLERANCES

X.	±0.30	X. '	± 5'
X.X	±0.25	X.X '	± 4'
X.XX	±0.20	X.XX '	± 3'
X.XXX	±0.15	X.XXX '	± 2'
LINEAR DIMS		ANGLES DIMS	
DWG NO.:	A-S0244		
MATERIAL	SEE NOTES		
FINISHED	SEE NOTES		

ANGLE OF PROJECTION



DOC TYP	Customer Drw	
DRAWN	DATE	May.Wang 2014-12-24
DESIGN	DATE	May.Wang 2014-12-24
CHECKED	DATE	Rain.Han 2014-12-24
APPROVED	DATE	Leo.Liu 2014-12-24



Amphenol Aorora Technology (Huizhou) Co.,Ltd

TITLE:
 FPC P1.0 CONN ZIF R/A
 TYPE SMT(BOTTOM CONTACT)

DWG NO.:	A4	SCALE	5:1	UNIT	mm	SHEET	1 OF 2
PART NUMBER:	F52R-1A**1-110**		REV.	B			

REV.	ECR/ECN No.	DESCRIPTION	DRAWN/DATE	CHECKED/DATE	APPROVED/DATE
A	/	NEW RELEASE	May.Wang 2014-12-24	Rain.Han 2014-12-24	Leo.Liu 2014-12-24
B	/	Update the drawing frame	May.Wang 2020-08-12	Rain.Han 2020-08-12	Leo.Liu 2020-08-12

NO.	COMPONENTS	MATERIALS	SPECIFICATION:FINISH/COLOR	QTY.
1	SLIDER	GLASS FILLED PA9T, UL94V-0	BLACK	1
2	HOUSING	GLASS FILLED LCP, UL94V-0	NATURAL	1
3	ANCHOR-PLATE	BRASS, T=0.20mm	SURFACE PLATING:2~5 um Sn UNDER PLATING:1~3 um Ni	2
4	CONTACT	PHOSPHOR BRONZE, T=0.20mm	SURFACE PLATING:SEE "NOTE" UNDER PLATING:1~3 um Ni	N

1 | 2 | 3 | 4

1. PACKING INTO REEL:

4pin~17pin view
 Dimensions: 12.00±0.10, 4.00±0.10, 2.00±0.20, A±0.30, 1.75±0.1, ø1.50^{+0.10}/_{-0.00}, 0.35±0.05
 Labels: Cover tape, Tarrier tape, PULL OUT DIRECTION

18pin~70pin view
 Dimensions: 12.00±0.1, 4.00±0.1, 2.00±0.20, A±0.30, 1.75±0.1, ø1.50^{+0.10}/_{-0.00}, 0.35±0.05, 1.75±0.05
 Labels: Cover tape, Tarrier tape, SECTION C-C, PULL OUT DIRECTION

DETAIL "D"
 Dimensions: 2±0.5, 1.50±0.05

REEL PAN
 Dimensions: Outerø13"; Innerø100*A
 Dimensions: ø330, ø100, A±0.30
 Labels: PULL OUT DIRECTION, (COVER)100mm Min.

REEL PARTS
 Dimensions: 160~200mm, 1,800PCS, 200~300mm
 Labels: TAIL PART (EMPTY), COMPONENT SUPPLIER, LEADER PART (EMPTY)

LIST:

NO.	DIM	A	B	N	TOL:PCS
3~8	PIN	24.0	11.50	10	18000
9~13	PIN	32.0	28.40	8	14400
14~24	PIN	44.0	40.40	6	10800
25~34	PIN	56.0	52.40	5	9000

NOTES:

- MATERIAL:
 - CARRY TAPE:HIPS,T=0.35mm,CLEAR
 - REEL:HIPS,BLUE.
 - SHIM:PE,CLEAR.
- PRIMARY PACKING:1,800PCS/REEL.
- SECONDARY PACKING:"N"REELS/CARTON
 ("TOTAL"=N*1800/CARTON).
- PEELING RESISTANCE: 0.1N~0.7N(10~70gf);
 PEELING ANGLE: 165°~180°;
 PEELING SPEED: 300mm/minutes.

2:PACKING INTO OUTER BOX

AIR CAP 2PCS
 L332*W332*H(3~4)

Vacuum bag
 L550*W435*T0.10

Domestic packaging
 Components: Waterproof bag(PE):1PCS (L700*W600*T0.05), CARTON,1PCS, TRANSPARENT BULE TAPE, SIDE LABEL
 Dimensions: 310 (inner dimension), 335 (inner dimension), 335 (inner dimension)

Overseas packaging
 Components: RIBBON, PROTECTIVE LAYER

REEL LABEL
 TOTAL N LAYERS

This document is the property of and embodies CONFIDENTIAL and PROPRIETARY information of AMOR. No part of the information shown on this document may be used in any way or disclosed to others without the written consent of AMOR. © 2019 AMOR

Amphenol AORORA

UNLESS OTHERWISE SPECIFIED TOLERANCES			ANGLE OF PROJECTION		 Amphenol Aorora Technology (Huizhou) Co.,Ltd		
X.	±0.30	X. '	± 5'		TITLE: FPC P1.0 CONN ZIF R/A TYPE SMT(BOTTOM CONTACT)		
X.X	±0.25	X.X '	± 4'				
X.XX	±0.20	X.XX '	± 3'	DOC TYP	Customer Drw		SIZE A4
X.XXX	±0.15	X.XXX '	± 2'	DRAWN	May 2014-12-24		
LINEAR DIMS	ANGLES DIMS		DESIGN	DATE		PART NUMBER: F52R-1A**1-110**	
DWG NO.:	A-S0244		DATE	May 2014-12-24			
MATERIAL	SEE NOTES		CHECKED	DATE		REV. B	
FINISHED	SEE NOTES		DATE	Leo.Liu 2014-12-24			
SCALE			1:1		UNIT : mm		
SHEET			2		OF 2		

Downloaded from Arrow.com

Aor-QR-0406-A