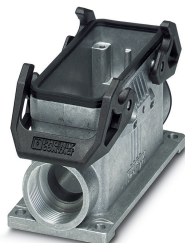


Housing - HC-STA-B16-SLWD-2SSM32-ELC-AL - 1412856

Please be informed that the data shown in this PDF Document is generated from our Online Catalog. Please find the complete data in the user's documentation. Our General Terms of Use for Downloads are valid
(<http://phoenixcontact.com/download>)




Box mounting bases B16, with double locking latch, material: Die-cast aluminum, salt water resistant, cable outlets: 2, lateral, height: 68 mm, cable gland: none, support sleeve: no, 2x M32, Standard

Your advantages

- ✓ good shielding in the event of electromagnetic interference



Key Commercial Data

Packing unit	1 pc
GTIN	 4 055626 060774
GTIN	4055626060774
Weight per Piece (excluding packing)	300.000 g
Custom tariff number	85389099
Country of origin	Poland

Technical data

Dimensions

Height	68 mm
Width	57 mm
Length	117.5 mm

Ambient conditions

Degree of protection (IP)	IP66
	IP67
Degree of protection (NEMA)	4 (UL 50e)
	4X (UL 50e)

Housing - HC-STA-B16-SLWD-2SSM32-ELC-AL - 1412856

Technical data

Ambient conditions

	12 (UL 50e)
Ambient temperature (operation)	-40 °C ... 125 °C

General

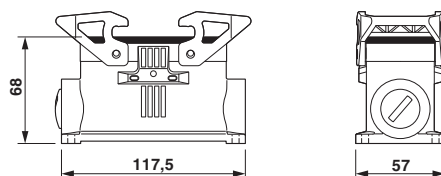
Note	For contact inserts HC-B16, BB32, D40, DD72, HS6, HV6, M, K
Size	B16
Housing type	Box mounting bases
Color	gray aluminum
Locking type	with double locking latch
No. of cable outlets	2
Cable outlet	lateral
Screw connection	none
Type of the screw connection	2x M32
Housing material	Die-cast aluminum, salt water resistant
Housing surface material	uncoated
Seal material	NBR, conductive
Material lock	PA
Flammability rating according to UL 94	V0 (Interlock)
Assembly instructions	One opening is sealed with a plastic filler plug and can be opened using a screwdriver.

Environmental Product Compliance

China RoHS	Environmentally Friendly Use Period = 50 years
	For details about hazardous substances go to tab "Downloads", Category "Manufacturer's declaration"

Drawings

Dimensional drawing



Dimensional drawing

Housing - HC-STA-B16-SLWD-2SSM32-ELC-AL - 1412856

Classifications

eCl@ss

eCl@ss 10.0.1	27440202
eCl@ss 11.0	27440202
eCl@ss 5.1	27261200
eCl@ss 6.0	27261200
eCl@ss 7.0	27440202
eCl@ss 9.0	27440202

ETIM

ETIM 6.0	EC000437
ETIM 7.0	EC000437

UNSPSC

UNSPSC 13.2	31261501
UNSPSC 18.0	31261501
UNSPSC 19.0	31261501
UNSPSC 20.0	31261501
UNSPSC 21.0	31261501

Approvals

Approvals

Approvals

UL Recognized / cUL Recognized / EAC / DNV GL / cULus Recognized

Ex Approvals




Approval details

UL Recognized		http://database.ul.com/cgi-bin/XYV/template/LISEXT/1FRAME/index.htm	E255026
---------------	---	---	---------

cUL Recognized		http://database.ul.com/cgi-bin/XYV/template/LISEXT/1FRAME/index.htm	E255026
----------------	---	---	---------

Housing - HC-STA-B16-SLWD-2SSM32-ELC-AL - 1412856

Approvals

EAC		RU C- DE.BL08.B.00511
DNV GL		https://approvalfinder.dnvgl.com/ TAE000037S
cULus Recognized		

Accessories

Accessories

Corrugated pipe screw connection

Screw connection - WP-G HF IP66 M32 BK - 3240900



Cable gland, metric thread, IP66 protection, straight

Screw connection - WP-G HF IP69K M32 BK - 3240886



Cable gland, metric thread, IP68/69k protection, straight

Screw connection - WP-GA HF IP66 M32 BK - 3240928



Cable gland, metric thread, IP66 protection, angled

Housing - HC-STA-B16-SLWD-2SSM32-ELC-AL - 1412856

Accessories

Screw connection - WP-GA HF IP69K M32 BK - 3240914



Cable gland, metric thread, IP68/69k protection, angled

Screw connection - WP-GR HF IP66 M32 BK - 3240956



Cable gland, metric thread, IP66 protection, with strain relief

Screw connection - WP-GR HF IP69K M32 BK - 3240942



Cable gland, metric thread, IP68/69k protection, with strain relief

Screw connection - WP-G PP HF M32 - 3241000



Cable gland made from PP with metric thread, IP65 protection

Screw connection - WP-GT PP HF M32 - 3241014



Cable gland made from PP with metric thread, rotatable, IP54 protection

Housing - HC-STA-B16-SLWD-2SSM32-ELC-AL - 1412856

Accessories

Screw connection - WP-G BRASS IP40 M32 - 3241049



Cable gland made from brass with metric thread, IP40 protection

Screw connection - WP-GT BRASS M32 - 3241035



Cable gland made from brass with metric thread, rotatable, IP40 protection

Screw connection - WP-G BRASS IP65 M32 - 3241063



Cable gland made from brass with metric thread, IP65 protection

Full screw connection

Cable gland - G-INS-M32-M68N-NNES-S - 1411166



Cable gland, cable gland material: Nickel-plated brass, external cable diameter 15 mm ... 21 mm, shielding: no, connecting thread: M32 x 1.5, color: silver, with O-ring

Cable gland - G-INSEC-M32-M68N-NCRS-S - 1411191



Cable gland, cable gland material: Nickel-plated brass, external cable diameter 14 mm ... 21 mm, shielding: yes, connecting thread: M32 x 1.5, color: silver, with O-ring

Housing - HC-STA-B16-SLWD-2SSM32-ELC-AL - 1412856

Accessories

Housing latches

Housing brackets - HC-STA-B10-24-DL-PLBK - 1412886



Double locking latch for B10 / B16 / B24 housing, HC-EVO....AL and HC-STA....AL

Seal

Profile gasket - HC-B16-SP-CBK - 1411480



Profile gasket for HEAVYCON EVO supporting base element type B16, conductive