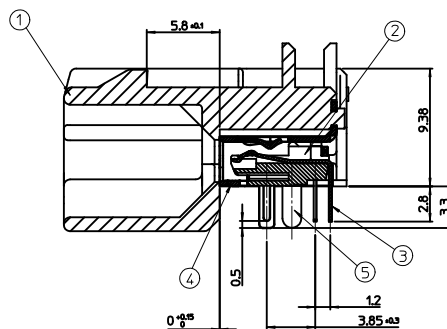
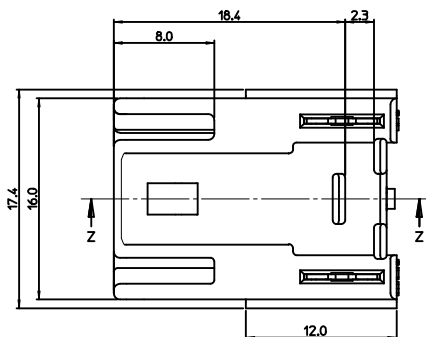
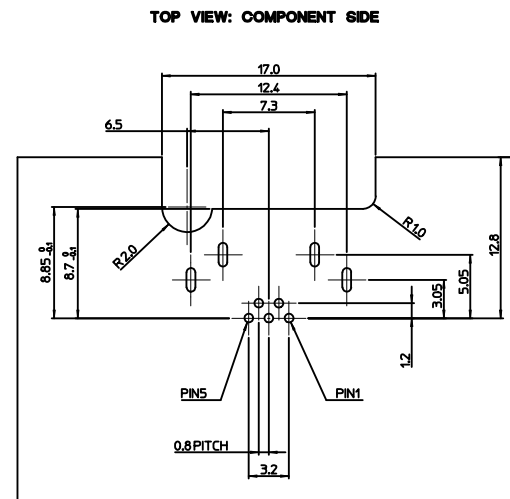


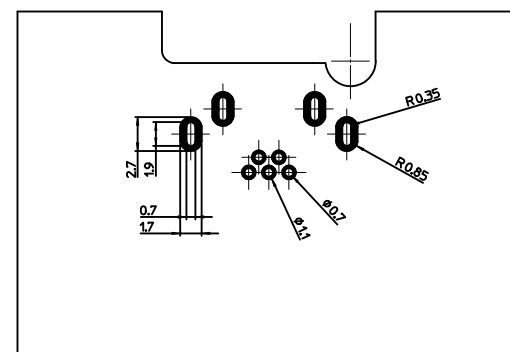
ISOVIEW



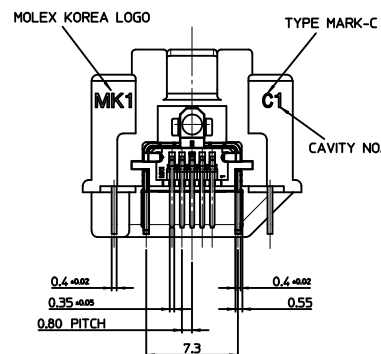
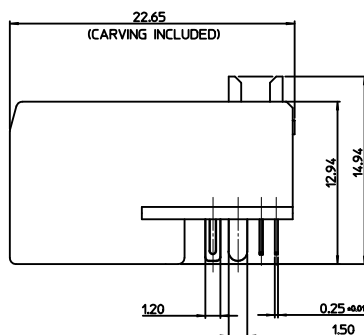
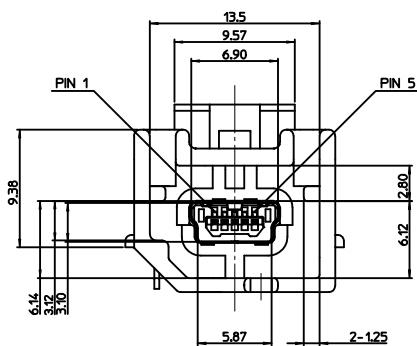
SECTION Z-Z



BOTTOM VIEW: SOLDER SIDE

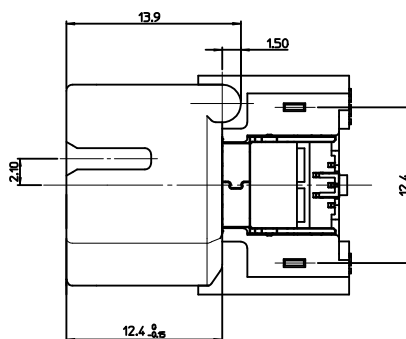


RECOMMENDED PCB LAYOUT



NOTES

- MATES WITH :
(MOLEX SERIES NO. : 111014, 111015, 111005, 111041, 111019, 111020)
- SHROUD GEOMETRY AND ASSEMBLY WITH USB MINI-B CONNECTOR ARE ACCORDING TO USCAR STD 999-U-USB-Z01
- FINISHES
 - TERMINAL :
CONTACT AREA : GOLD 0.75 μ m MIN.
SOLDER TAIL AREA : TIN 3.8 μ m MIN.
UNDER PLATING : NI 1.25 μ m MIN.
 - SHIELD CASE :
3.0 μ m MIN. TIN OVER NI 1.0 μ m MIN.
 - FITTING NAIL :
3.0 μ m MIN. TIN OVER NI 1.0 μ m MIN.
- UNLESS OTHERWISE SPECIFIED, TYPICAL RECOMMENDED PCB MANUFACTURING TOLERANCE IS ± 0.05
- PCB THICKNESS : 1.6mm(REFERENCE)



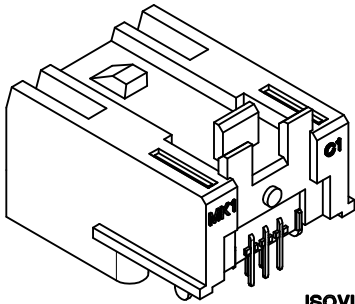
<PART LIST>

NO.	PART NAME	MATERIALS
①	SHROUD	SPS, GLASS FILLED, UL94 HB
②	REC. HOUSING	LCP, GLASS FILLED, UL94 V-0
③	TERMINAL	COPPER ALLOY
④	SHIELD CASE	PHOSPHOR BRONZE
⑤	FITTING NAIL	BRASS

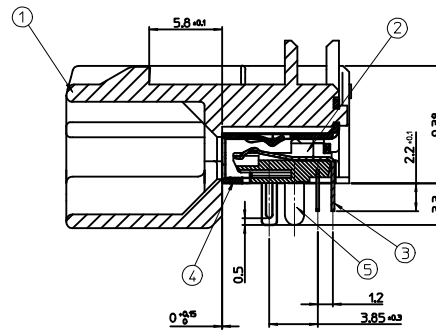
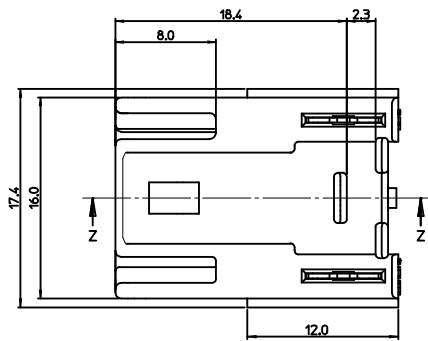
<TABLE 1>

MATERIAL NO.	ORDER NO.	COLOR
1040870717	104087-0717	BROWN

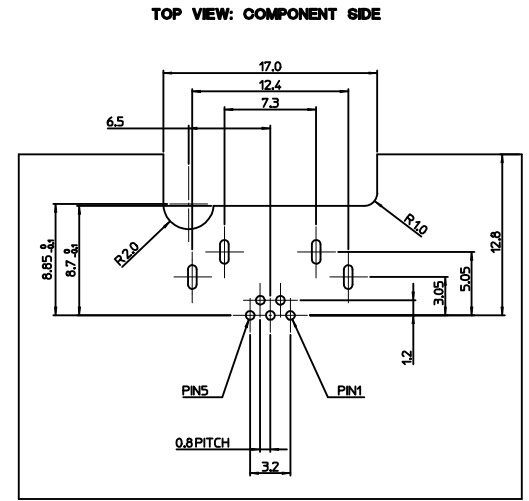
NEW RELEASE EC NO: KTR2012-0035 DRAWN BY: DFWNH100N CHECKED BY: CHKBCBY00N APPR: JHBAE DATE: 2012/05/04	QUALITY SYMBOLS	GENERAL TOLERANCES (UNLESS SPECIFIED)	DIMENSION STYLE	SCALE	DESIGN UNITS	THIRD ANGLE PROJECTION
	$\nabla=0$ $\nabla=0$	mm INCH 4 PLACES \pm --- \pm --- 3 PLACES \pm --- \pm --- 2 PLACES ± 0.15 \pm --- 1 PLACE ± 0.25 \pm --- ANGULAR $\pm 3^\circ$	MM ONLY DRAWN BY: BGYOON DATE: 2010/01/20 CHECKED BY: BGYOON DATE: 2010/01/20 APPROVED BY: JHBAE DATE: 2012/05/04	5:1	METRIC	<input checked="" type="checkbox"/> THIRD ANGLE PROJECTION
	DRAFT WHERE APPLICABLE MUST REMAIN WITHIN DIMENSIONS		SEE TABLE 1 SIZE 1	TITLE: HSAUTOLINK R/A HEADER OPTION TYPE C MOLEX INCORPORATED SD-104087-004		SHEET NO. 1 OF 00
	THIS DRAWING CONTAINS INFORMATION THAT IS PROPRIETARY TO MOLEX INCORPORATED AND SHOULD NOT BE USED WITHOUT WRITTEN PERMISSION					



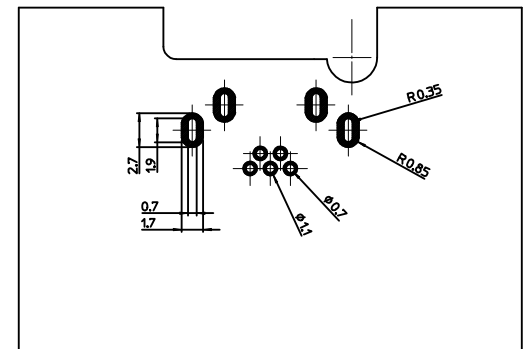
ISOVIEW



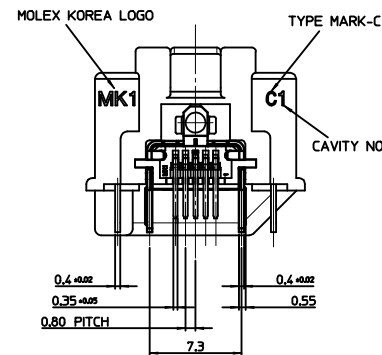
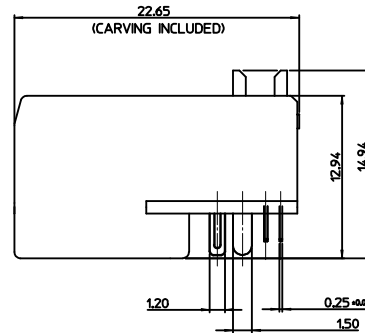
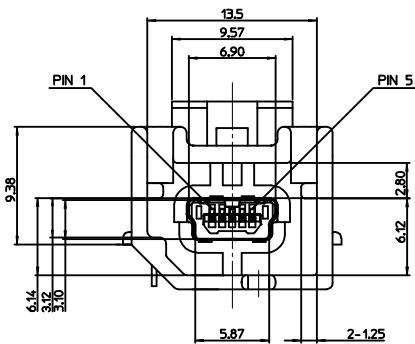
SECTION Z-Z



BOTTOM VIEW: SOLDER SIDE



RECOMMENDED PCB LAYOUT



NOTES

- MATES WITH :
(MOLEX SERIES NO. : 111014, 111015, 111005, 111041, 111019, 111020)
- SHROUD GEOMETRY AND ASSEMBLY WITH USB MINI-B CONNECTOR ARE ACCORDING TO USCAR STD 999-U-USB-Z01
- FINISHES
- TERMINAL :
CONTACT AREA : GOLD 0.754μm MIN.
SOLDER TAIL AREA : TIN 3.84μm MIN.
UNDER PLATING : NI 1.254μm MIN.
- SHIELD CASE :
3.04μm MIN. TIN OVER NI 1.04μm MIN.
- FITTING NAIL :
3.04μm MIN. TIN OVER NI 1.04μm MIN.
- UNLESS OTHERWISE SPECIFIED, TYPICAL RECOMMENDED PCB MANUFACTURING TOLERANCE IS ±0.05
- PCB THICKNESS : 1.6mm(REFERENCE)
- APPLY TO WITHOUT SIDEWING TYPE

<PART LIST>

NO.	PART NAME	MATERIALS
①	SHROUD	SPS, GLASS FILLED, UL94 HB
②	REC. HOUSING	LCP, GLASS FILLED, UL94 V-0
③	TERMINAL	COPPER ALLOY
④	SHIELD CASE	PHOSPHOR BRONZE
⑤	FITTING NAIL	BRASS

<TABLE 1>

MATERIAL NO.	ORDER NO.	PACKAGING	COLOR
1040870117	104087-0117	TRAY	BROWN
1040870317	104087-0317	REEL & TAPE	BROWN

NEW RELEASE REC NO: K1R2015-0001 DRW: YIBAEK 2014/08/12 CHKD: JYCHOI APPR: JYCHOI A1	QUALITY SYMBOLS ▽=0 ▽=0	GENERAL TOLERANCES (UNLESS SPECIFIED) mm INCH 4 PLACES ± --- ± --- 3 PLACES ± --- ± --- 2 PLACES ± 0.15 ± --- 1 PLACE ± 0.25 ± --- ANGULAR ± 1°		DIMENSION STYLE MM ONLY	SCALE DESIGN UNITS METRIC	THIRD ANGLE PROJECTION
		DRAWN BY YIBAEK		DATE 2014/05/07	TITLE HSAUTOLINK R/A HEADER TYPE-C FOR HMI MODULE (SOLDER TAIL=2.2MM)	
		CHECKED BY BCYOON		DATE 2014/05/07	MOLEX INCORPORATED	
		APPROVED BY JYCHOI		DATE 2014/05/07	SEE TABLE 1 SD-104087-014	
MATERIAL NO. DOCUMENT NO. SHEET NO. 1040870117 104087-0117 1 OF 1			THIS DRAWING CONTAINS INFORMATION THAT IS PROPRIETARY TO MOLEX INCORPORATED AND SHOULD NOT BE USED WITHOUT WRITTEN PERMISSION			