



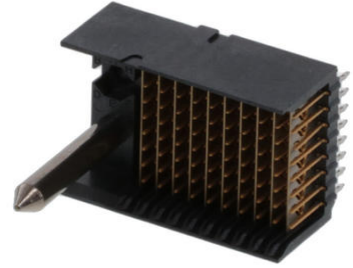
Part Number : [740611002](#)

Product Description : 2.00mm Pitch VHDM Single-Ended Board-to-Board Backplane Header, Vertical, 8 Rows, Guide Pin Signal Module, Pin End Version, 80 Circuits, 10 Columns, Pin Length 6.25mm

Series Number : 74061

Status : Active

Product Category : Backplane Connectors



Documents and Resources

Drawings

[740611002_sd.pdf](#)

[PK-74061-003-001.pdf](#)

3D Models and Design Files

[STEP AP242](#)

[SOLIDWORKS](#)


[Creo](#)

Specifications

[PS-74031-999-001.pdf](#)

Product Environment Compliance

Compliance

GADSL/IMDS	Not Relevant
China RoHS	 per SJ/T 11365-2006
EU ELV	Not Relevant
Low-Halogen Status	Low-Halogen per IEC 61249-2-21
REACH SVHC	Not Contained per D(2025)7771-DC (04 Feb 2026)
EU RoHS	Compliant per EU 2015/863

Compliance Statements

- EU RoHS

- REACH SVHC
- Low-Halogen

Industry Documents

- IPC 1752A Class C
- IPC 1752A Class D
- Molex Product Compliance Declaration
- IEC-62474
- chemSHERPA (xml)

Substances of Interest

- PFAS

EU RoHS Certificate of Compliance

Additional Product Compliance Information

Part Details

General

Status	Active
Category	Backplane Connectors
Series	74061
Description	2.00mm Pitch VHDM Single-Ended Board-to-Board Backplane Header, Vertical, 8 Rows, Guide Pin Signal Module, Pin End Version, 80 Circuits, 10 Columns, Pin Length 6.25mm
Application	Backplane
Comments	No Keying Position
Component Type	PCB Header
Product Name	VHDM
UPC	800754780933

Agency

CSA	LR19980
UL	E29179

Electrical

Current - Maximum per Contact	3.0A
Data Rate	3.125 Gbps

Shielded	Yes
Shield Type	Ground Plane Shield
Voltage - Maximum	120V AC (RMS)/DC

Physical

Circuits (Loaded)	80
Circuits (maximum)	80
Color - Resin	Black
Durability (mating cycles max)	200
First Mate / Last Break	No
Flammability	94V-0
Guide to Mating Part	Yes
Keying to Mating Part	No
Material - Metal	Beryllium Copper, High Performance Alloy (HPA), Stainless Steel
Material - Plating Mating	Gold
Material - Plating Termination	Tin-Lead
Material - Resin	High Temperature Thermoplastic
Net Weight	8.620/g
Number of Columns	10
Number of Pairs	Open Pin Field
Number of Rows	8
Orientation	Vertical
Packaging Type	Tube
PCB Locator	No
PCB Retention	No
PCB Thickness - Recommended	1.80mm
PC Tail Length	2.50mm
Pitch - Mating Interface	2.00mm
Pitch - Termination Interface	1.00mm
Plating min - Mating	0.762µm
Plating min - Termination	0.762µm
Polarized to PCB	Yes
Temperature Range - Operating	105°C max
Termination Interface Style	Through Hole - Compliant Pin

Mates With / Use With

Mates with Part(s)

Description	Part Number
VHDM Daughtercards	<u>74040</u>

Application Tooling

Global

Description	Part Number
Signal Pin Inserter Repair Tool	<u>622015700</u>
8-Row Pin and Shield Repair Tool	<u>622015900</u>

This document was generated on Apr 29, 2026