



**Part Number :** [5025781000](#)

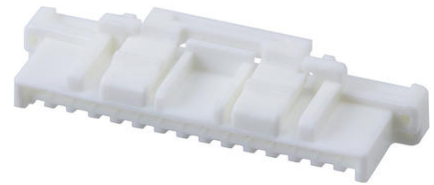
**Product Description :** CLIK-Mate Plug Housing,  
1.50mm Pitch, Single Row, Positive Lock, 10 Circuits,  
Natural

**Series Number :** 502578

**Status :** Active

**Product Category :** Connector Housings

---



## Documents and Resources

### Drawings

[5025781000\\_sd.pdf](#)

### 3D Models and Design Files

[STEP AP242](#)

[SOLIDWORKS](#)

[Creo](#)

[5025781000.dxf](#)

### Specifications

[AS-502578-001-001.pdf](#)

[AS-503395-001-001.pdf](#)

[SPK-502578-001-001.pdf](#)

[5025780000-PS-000.pdf](#)

[5025780001-PS-000.pdf](#)

[5025780002-PS-000.pdf](#)

[5025780003-PS-000.pdf](#)

[5025781000-PS-000.pdf](#)

[5025781002-PS-000.pdf](#)

[5025781003-PS-000.pdf](#)


[5025781004-PS-000.pdf](#)

[5025780004-PS-000.pdf](#)

---

## Product Environment Compliance

### Compliance

GADSL/IMDS	Not Relevant
China RoHS	 per SJ/T 11365-2006
EU ELV	Not Relevant
Low-Halogen Status	Not Low-Halogen per IEC 61249-2-21
REACH SVHC	Not Contained per D(2025)7771-DC (04 Feb 2026)
EU RoHS	Compliant per EU 2015/863

### Compliance Statements

- EU RoHS
- REACH SVHC
- Low-Halogen

### Industry Documents

- IPC 1752A Class C
- IPC 1752A Class D
- Molex Product Compliance Declaration
- IEC-62474
- chemSHERPA (xml)

### Substances of Interest

- PFAS

### EU RoHS Certificate of Compliance

### Additional Product Compliance Information

## Part Details

### General

Status	Active
Category	Connector Housings
Series	502578
Description	CLIK-Mate Plug Housing, 1.50mm Pitch, Single Row, Positive Lock, 10 Circuits, Natural
Application	Signal, Wire-to-Board
Product Name	CLIK-Mate
UPC	800756700724

### Agency

UL	E29179
----	--------

## Physical

Circuits (maximum)	10
Color - Resin	Natural
Gender	Plug
Glow-Wire Capable	No
Keying to Mating Part	None
Lock to Mating Part	Yes
Material - Resin	PBT
Net Weight	474.500/mg
Number of Rows	1
Packaging Type	Bag
Panel Mount	No
Pitch - Mating Interface	1.50mm
Pitch - Termination Interface	1.50mm
Polarized to Mating Part	Yes
Stackable	No
Temperature Range - Operating	-40° to +105°C

## Mates With / Use With

### Mates with Part(s)

Description	Part Number
1.50mm Pitch CLIK-Mate Bottom Entry Single Row PCB Receptacles	<a href="#"><u>503395</u></a>
1.50mm Pitch CLIK-Mate Right-Angle Single Row PCB Receptacles	<a href="#"><u>213226</u></a>
1.50mm Pitch CLIK-Mate Right-Angle Single Row PCB Receptacles	<a href="#"><u>502585</u></a>
1.50mm Pitch CLIK-Mate Right-Angle Single Row PCB Receptacles	<a href="#"><u>503175</u></a>
1.50mm Pitch CLIK-Mate Vertical Single Row PCB Receptacles	<a href="#"><u>213225</u></a>
1.50mm Pitch CLIK-Mate Vertical Single Row PCB Receptacles	<a href="#"><u>502584</u></a>

1.50mm Pitch CLIK-Mate Vertical Single Row PCB Receptacles	<a href="#"><u>503159</u></a>
--	-------------------------------

**Use with Part(s)**

Description	Part Number
Pre-Crimped Lead CLIK-Mate 1.50mm Male-to-CLIK-Mate 1.50mm Male, Tin (Sn) Plating, 300.00mm Length, 24 AWG, Black	<a href="#"><u>797581011</u></a>
1.50mm Pitch CLIK-Mate Male Crimp Terminals	<a href="#"><u>502579</u></a>
1.50mm Pitch CLIK-Mate Male Crimp Terminals	<a href="#"><u>503429</u></a>
CLIK-Mate 1.50mm Pitch Male Crimp Terminals	<a href="#"><u>213028</u></a>
CLIK-Mate 1.50mm Pitch Male Crimp Terminals	<a href="#"><u>213029</u></a>
Pre-Crimped Lead Clik-Mate Male-to-Clik-Mate Male	<a href="#"><u>215710</u></a>
Pre-Crimped Lead Clik-Mate Male-to-Pigtail	<a href="#"><u>215711</u></a>

---

This document was generated on Mar 02, 2026