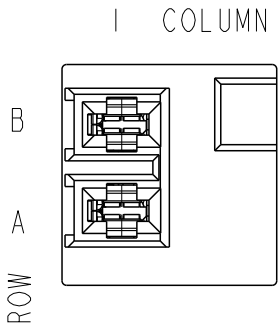


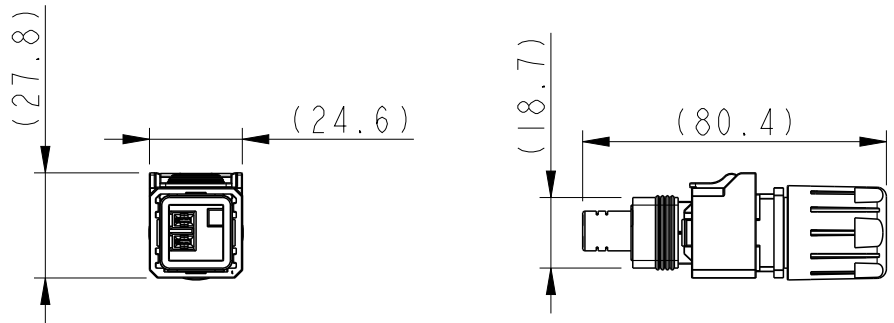
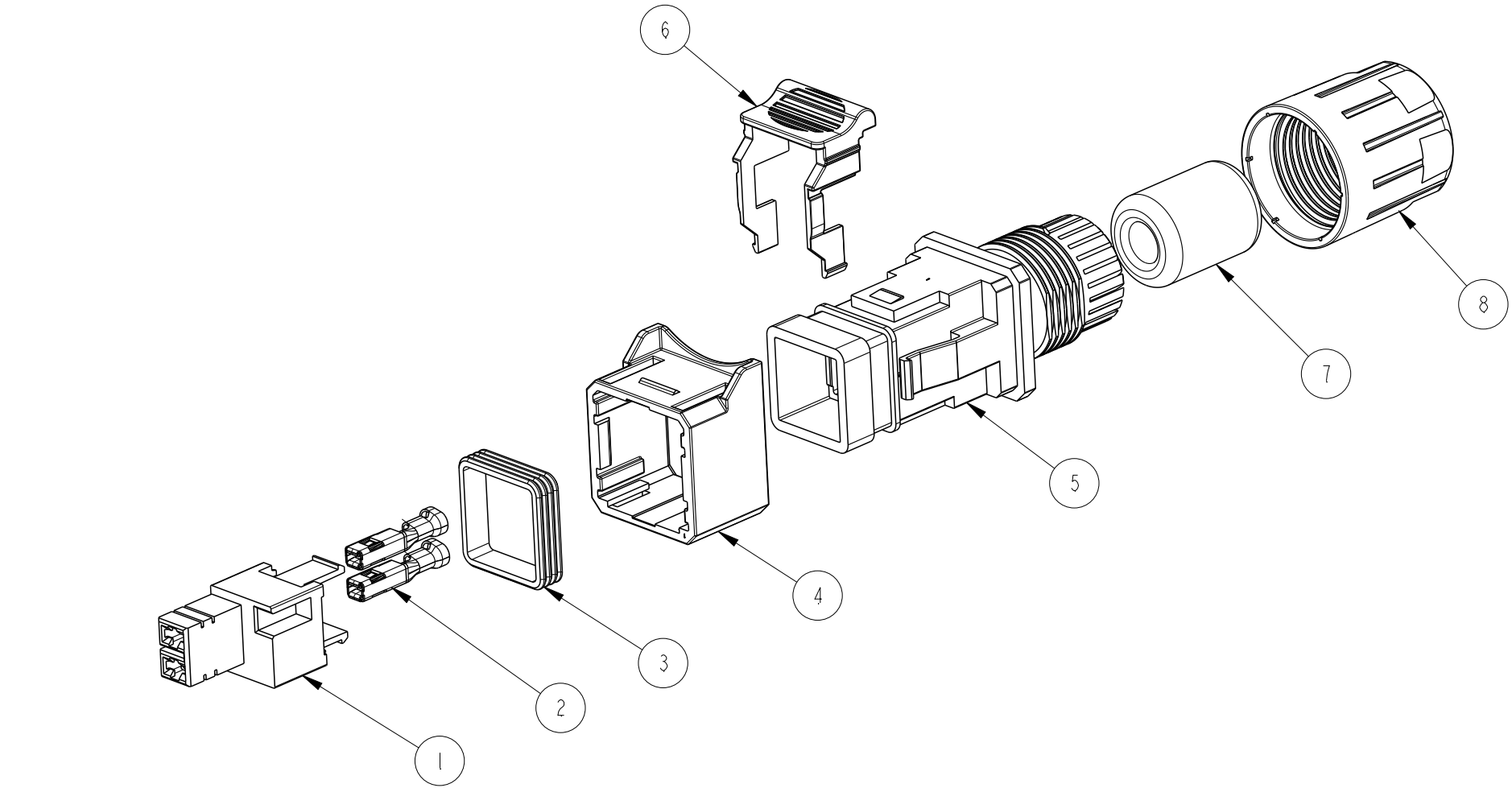
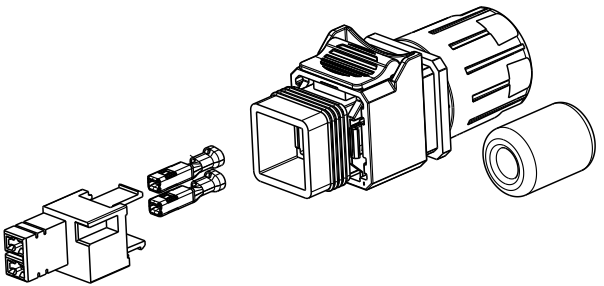
PART NUMBER
10143487-101LF

VERIO PLUG KIT, 2 POS POWER, CRIMP TYPE
TERMINALS, PITCH 26 MM

CONNECTOR FRONT VIEW






PACKING CONFIGURATION



SL NO	DESCRIPTION	MATERIAL	QTY	REMARKS
1	CONNECTOR HOUSING	PBT	1	
2	POWER CONTACTS	COPPER ALLOY	2	
3	SEAL	SILICONE	1	
4	SLIDE	PBT GF	1	
5	HOLDER	PBT GF	1	
6	SECONDARY LOCK	PBT GF	1	
7	GLAND	SILICONE	1	
8	NUT	PBT GF	1	

NOTES:

- 1.ALL PARTS WILL BE SUPPLIED IN BULK PACKING
- 2.PRODUCT SPEC - GS-12-1428
- 3.APPLICATION SPEC - GS-14-XXXX

spec ref		dr		Jibin John	2017/09/26	projection 	mm 	size	A3	scale	3:10	
tolerance std ISO 406 ISO 1101	TOLERANCES UNLESS OTHERWISE SPECIFIED		eng	B T Varghese	2017/10/14			ecn no		-		
			chr	-	-			rel level		Released		
		appr		Varma Sudhir	2017/10/14	product family		-				
surface  ISO 1302	linear	0.X	±0.3	Amphenol FCi	title 2 POS. POWER PLUG KIT VERIO	dwg no	10143487		rev A			
		0.XX	±0.13									
		0.XXX	±0.05									
		angular	0° ±2°			cat. no.		-		Product - Customer Drw		
										sheet 1 of 1		