

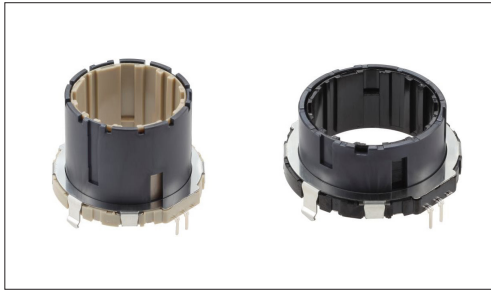
Encoders

Ring Encoder

35mm Size ABC Switch Type

EC35AH/EC35CH Series

Hollow-shaft encoder capable of three-phase output for composite applications.


 Automotive

- Output signal: Three phase A, B and C
- Ratings: 10mA 5V DC
- Operating life: 50,000 cycles

Applications: Automotive: Navigation/audio systems, HVAC

■ Product List

Products No.	Actuator length (mm)	Detent torque	Number of detent	Number of pulse	Automotive	Drawing No.
EC35AH240403	15.0	12±5mN·m	30	10	●	1
EC35AH220403	15.0	18±7mN·m	30	10	●	
EC35AH260403	15.0	30±15mN·m	30	10	●	
EC35AH240502	25.0	12±5mN·m	30	10	●	2
EC35AH220502	25.0	18±7mN·m	30	10	●	
EC35AH260502	25.0	30±15mN·m	30	10	●	
EC35AH120401	15.0	18±7mN·m	18	6	●	3
EC35CH120401	14.9	22±11mN·m (Initial) 18±7mN·m (After reflow)	18	6	●	4

 Note

1. This catalog shows only outline specifications. When using the products, please obtain formal specifications for supply.
2. Please place purchase orders per minimum order unit (integer).

■ Packing Specifications

Tray

Products No.	Number of packages (pcs.)		Export package measurements (mm)
	1 case / Japan	1 case / export packing	
EC35AH240403 EC35AH220403 EC35AH260403 EC35AH120401	800	800	540 x 360 x 290
EC35AH240502 EC35AH220502 EC35AH260502	350	700	540 x 360 x 380
EC35CH120401	384	384	440 x 290 x 205

Drawing No.4

■ Dimensions

