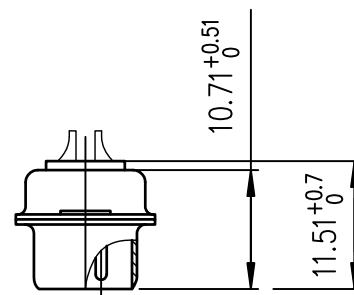
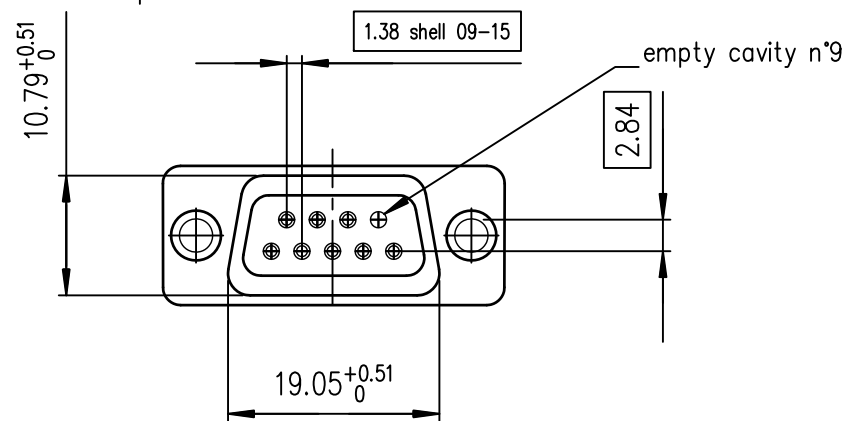
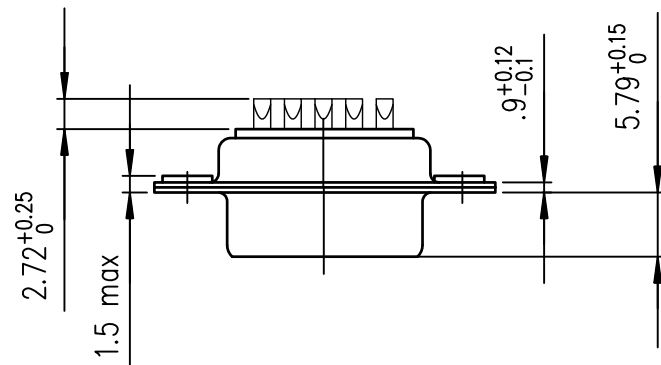
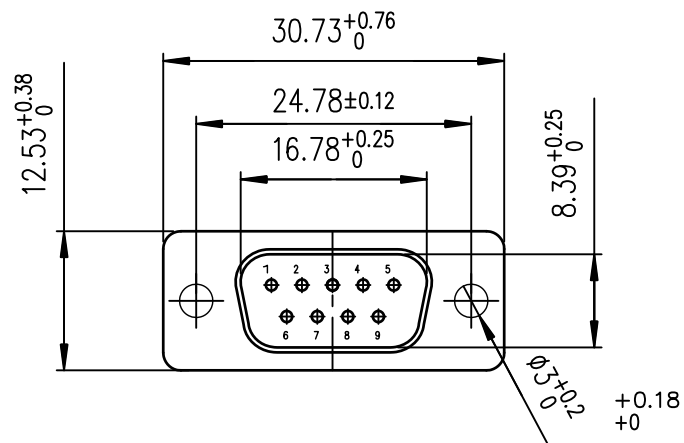




Copyright FCI.

PRODUCT NUMBER  
DEM09PSP280



#### ELECTRICAL DATA

-I max	7.5A
-Contact resistance	<7.3mΩ
-Insulation resistance	>5000MΩ
-TEST VOLTAGE	
contact/contact	>1000V
contact/ground	>1200V

#### MECHANICAL DATA




-Contact force	>0.20N
-Retention force	>40N
-Insertion force	according to DIN41652 Part 2
-Withdrawal force	according to DIN41652 Part 2
-Mechanical endurance	500 matings / unmatings
-Material shell	steel
-Material insulator	glass filled thermoplastic UL94V0
-Material contacts	pin: brass.
-Finish on contact area	gold over nickel
-Finish on termination end	gold over nickel

#### ENVIRONMENTAL DATA

-Climatic category	-55°/ +125°/56
-Corrosion	salt spray: 48h

European Views

rev	ecn no	dr	date
A	-	MPE	2005/10/24
B	-	MPE	2005/11/21
C	-	MPE	2005/12/19
D	-	MPE	2005/01/04
E	LS06-0007	MPE	2006/01/09
F	LS06-0097	LGO	2006/07/27
G	F10-0021	LSA	2010/03/25

www.fciconnect.com			surface ISO 1302		tolerance std ISO 406 ISO 1101		projection 		mm 				
			TOLERANCES UNLESS OTHERWISE SPECIFIED										
Dr	M PESSON	2005/10/24	ANGULAR  LINEAR		0.X		±0.1		size  A3	Scale 1.5			
Eng	P LEGARE	2005/10/24			0.XX		±0.1						
Chr	-	-			0.XX* ±2°		0.XXX			±0.1			
Appr	-	-	Product family					D-SUB		Spec ref -			
			title MALE CONNECTOR SP280 with solder bucket					dwg no C01-8637-1663					Rev. G
			catalog no					-					CUSTOMER

REV F - 2006-04-17

PDS: Rev :G

STATUS:Released

Printed: Mar 07, 2017