

# Actuator

31-  
261.022



<https://eao.com/p/31-261.022>

Your product:

---



## 31-261.022 Actuator

### FRONT

Front bezel material:	Plastic
Front bezel colour:	Black
Front dimension:	24 mm x 18 mm
Front form:	rectangular

### MOUNTING

Mounting cut-out:	Ø 16 mm
Design:	raised

### OPERATING-/INDICATION PART

Lens illumination:	illuminative
--------------------	--------------

### ELECTRICAL CHARACTERISTICS

Rated Operational Voltage Ue:	250 VAC/VDC
Thermal current Ith:	5 A
Standards:	According to EN/IEC 61058-1
Electric strength:	2500 VAC, 50 Hz, 1 minute, as per IEC 60512-2-11 between all terminals and earth
Contacts:	1 NC / 1 NO
Electrical lifetime:	50 000 cycles of operation
Protection class:	II
Switching voltage and switching current:	

250 VAC, 5 A (ohmic)  
250 VAC, 3 A (Soldering terminal)  
250 VAC, 2 A (inductive,  $\cos(\phi) = 0.7$ )  
125 VAC, 3 A (inductive,  $\cos(\phi) = 0.7$ )  
220 VDC, 0.1 A (inductive, L:R = 30 ms)  
60 VDC, 0.7 A (inductive, L:R = 30 ms)  
24 VDC, 2 A (inductive, L:R = 30 ms)

## MECHANICAL CHARACTERISTIC

<b>Mechanical lifetime:</b>	1 Mio. cycles of operation
<b>Terminal:</b>	Plug-in terminal, 2.8 x 0.5 mm
<b>Switching action:</b>	Maintained
<b>Wire cross section:</b>	Max. wire cross-section 1 wire with 1.5 mm Max. wire cross-section of stranded cable 2 of 0.75 mm <sup>2</sup> or 1 x 1.0 mm <sup>2</sup>
<b>Operating force:</b>	2 N ... 5,5 N, depending on the number of switching elements
<b>Contact material:</b>	Gold
<b>Weight:</b>	0.006 kg
<b>Switching system:</b>	Snap-action switching element
<b>Operating Travel:</b>	ca. 3 mm
<b>Tightening torque:</b>	Fixing nut max. 0.5 Nm
<b>Switching system:</b>	Self-cleaning, double-break snap action switching system (contact opening width 2 mm x 0.5 mm), 1 normally closed and 1 normally open contact per element.

## AMBIENT CONDITION

<b>Storage temperature:</b>	- 40 °C ... + 85 °C
<b>Operating temperature:</b>	- 25 °C ... + 55 °C, mounted as a block, make sure the heat can escape freely
<b>IP Protection:</b>	IP40 front side, IP67 with front protective cap
<b>Vibration resistance:</b>	10 g at 10 Hz...2000 Hz, amplitude 1.5 mm (Sinusoidal), according to DIN EN 60512-4-4, DIN EN 60068-2-6
<b>Climate resistance:</b>	Standard condition according to IEC 60068-2-3 Changing condition according to IEC 60068-2-14
<b>Shock resistance:</b>	15 g for 11 ms, as per IEC 60512-4-3, IEC 60068-2-27 (Single impacts, semi-sinusoidal)

## CERTIFICATE

<b>Approbations:</b>	CB (IEC 61058-1), CSA, DNV, ENEC (EN 61058-1), UL
<b>Conformities:</b>	CE, UKCA, 2011 / 65 / EC (RoHS), 2014 / 35 / EU (LVD)

## OTHER

**max. number of switching elements:**

1

**Internal size:**

21,5 mm x 15,3 mm

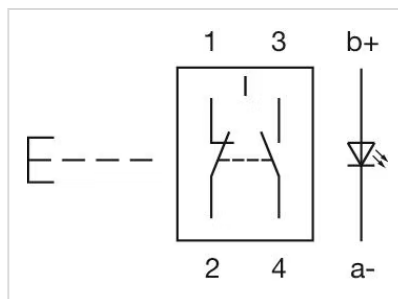
**Short Description:**

Actuator, Ø 16 mm, 24 mm x 18 mm, illuminative, rectangular, Black, Plastic, 1 NC / 1 NO, Maintained, Plug-in terminal, 2.8 x 0.5 mm

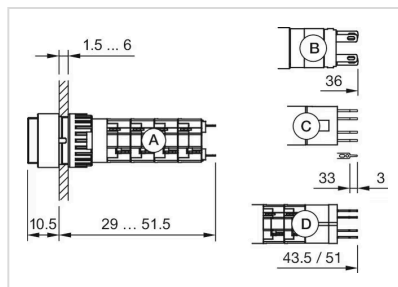
**Housing colour:**

Black

**Wiring diagrams:**



**Dimension drawings:**



A = Solder terminal

B = Plug-in terminal 2.8 mm x 0.5 mm

C = Universal terminal 2.0 mm x 0.5 mm

D = Universal-Sol

**Mounting cut-outs:**

