



GLAA20A1A



Actual product appearance may vary.

Global Limit Switches Series GLS: Side Rotary With Roller - Standard, 2NC 2NO DPDT Snap Action, 0.5 in - 14NPT conduit

Features

- Designed to IEC standard for world-wide applications
- UL, CSA, and CE
- International conduit sizes
- Direct PLC interface compatible (two circuit)
- Modular construction reduces maintenance parts costs
- Designed for ease of installation
- Variety of basic switch versions
- Wide choice of actuators

Potential Applications

- Machine tools: metal fabrication equipment, presses, transfer lines and special machinery
- Material handling equipment: conveyors, elevators, cranes, and hoists
- Packaging machinery and process equipment
- Textile machinery
- Construction machinery and equipment, vehicles and lift trucks

Description

The GLS series limit switches are specifically designed for world-wide applications and are supported by Honeywell global resources for sale and after sale service.

Product Specifications	
Availability	Global
Operating Force (O.F.)	0,330 N m [2.90 in lb]
Pretravel (P.T.)	26°
Overtravel (O.T.)	59°
Differential Travel (D.T.)	12°
Product Type	EN50041/47 Global Limit Switch
Actuator	Side Rotary
Lever Style	Roller - Standard
Circuitry	2NC 2NO DPDT Snap Action
Ampere Rating	10 A (Thermal)
Supply Voltage	600 Vac and 250 Vdc max.
Housing Material	Zinc Die-Cast

Termination Type	0.5 in - 14NPT conduit
Housing Type	EN 50041
Series Name	GLS DIN
Shock	50 g per IEC 68-2-27c (w/o Actuator)
Vibration	10 g per IEC 68-2-6 (w/o Actuator)
Sealing	NEMA 1, 4, 12, 13 IP67
Approvals	UL, CSA, CE
CSA File #	LR94369-3
UL File #	E37138 & E157416
Mechanical Life	15 million
Operating Temperature Range	-25 °C to 85 °C [-13 °F to 185 °F]
Comment	Roller Material: Plastic
Agency Approvals and Standards	IEC 947-5-1, EN60947-5-1, UL508
UNSPSC Code	302119
UNSPSC Commodity	302119 Switches and controls and relays
Sealed	Industrial
Operating Position (O.P.)	26°

SIDE ROTARY

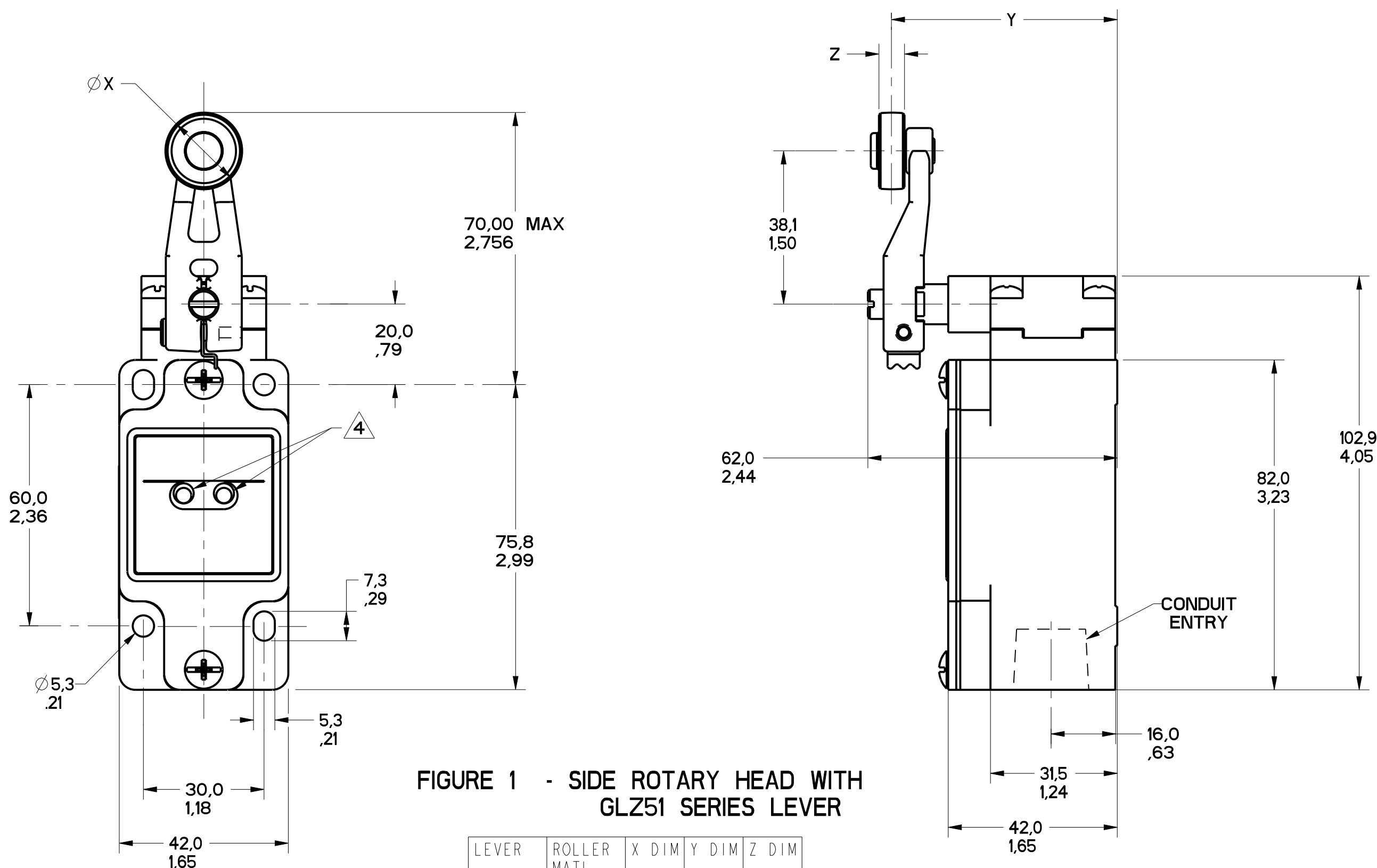


FIGURE 1 - SIDE ROTARY HEAD WITH GLZ51 SERIES LEVER

LEVER	ROLLER MATL	X DIM	Y DIM	Z DIM
GLZ51A	NYLON	19.1 .75	55.9 2.20	6.4 .25
GLZ51B	STEEL	19.1 .75	55.9 2.20	6.4 .25
GLZ51Y	RUBBER	50.0 1.97	66.1 2.60	10.0 .39

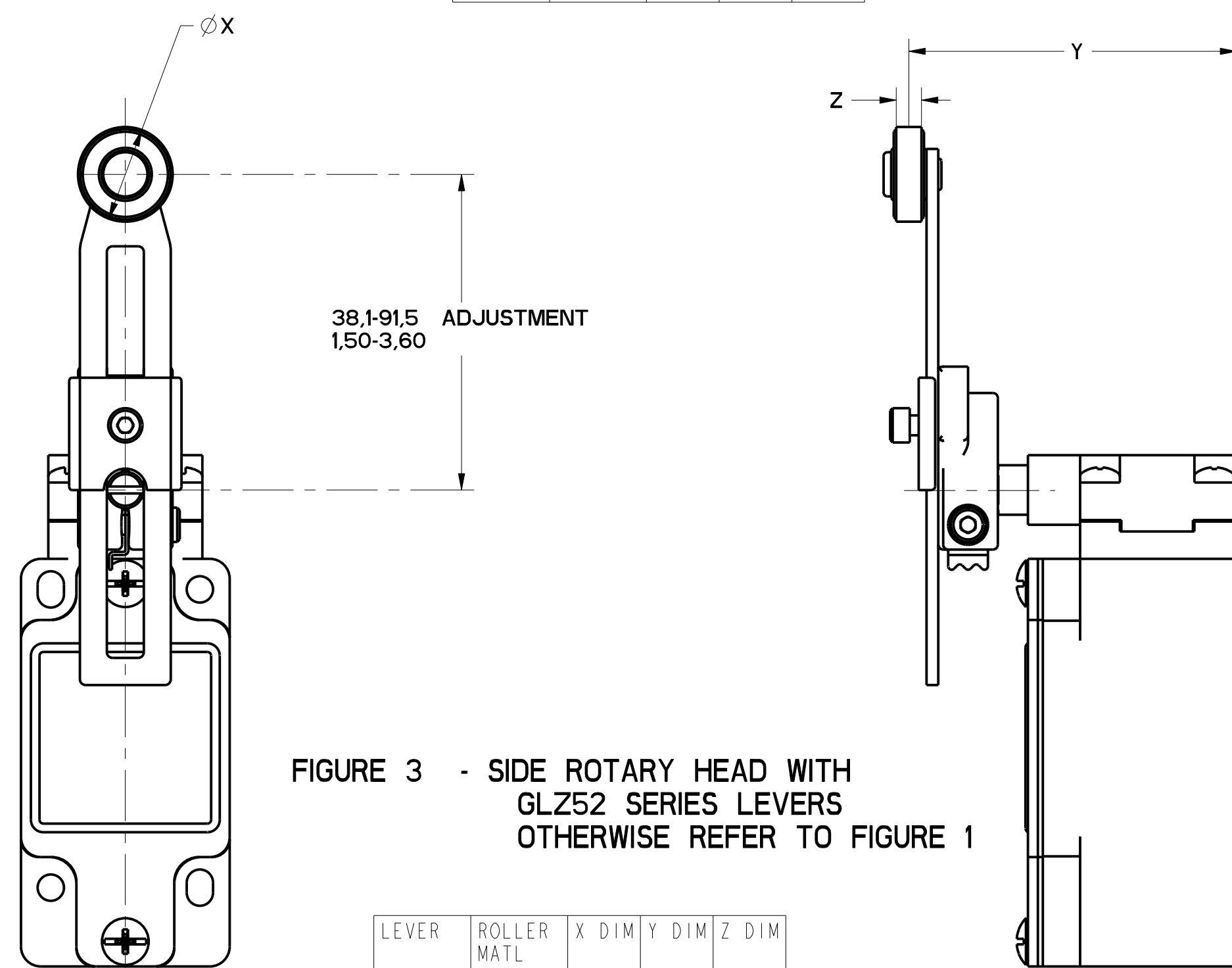


FIGURE 3 - SIDE ROTARY HEAD WITH GLZ52 SERIES LEVERS OTHERWISE REFER TO FIGURE 1

LEVER	ROLLER MATL	X DIM	Y DIM	Z DIM
GLZ52A	NYLON	19.1 .75	65.9 2.59	6.4 .25
GLZ52B	STEEL	19.1 .75	65.9 2.59	6.4 .25
GLZ52D	NYLON	38.1 1.5	65.9 2.59	6.4 .25
GLZ52E	NYLON	19.1 .75	79.37 3.125	33.07 1.300
GLZ52W	RUBBER	40.0 1.6	71.5 2.81	12.7 .5
GLZ52Y	RUBBER	50.0 1.97	68.8 2.71	10.0 .39

GLZ54J: 200.00 / 7.870 MAX
GLZ54K: 140.00 / 5.510 MAX
ALUMINUM ROD

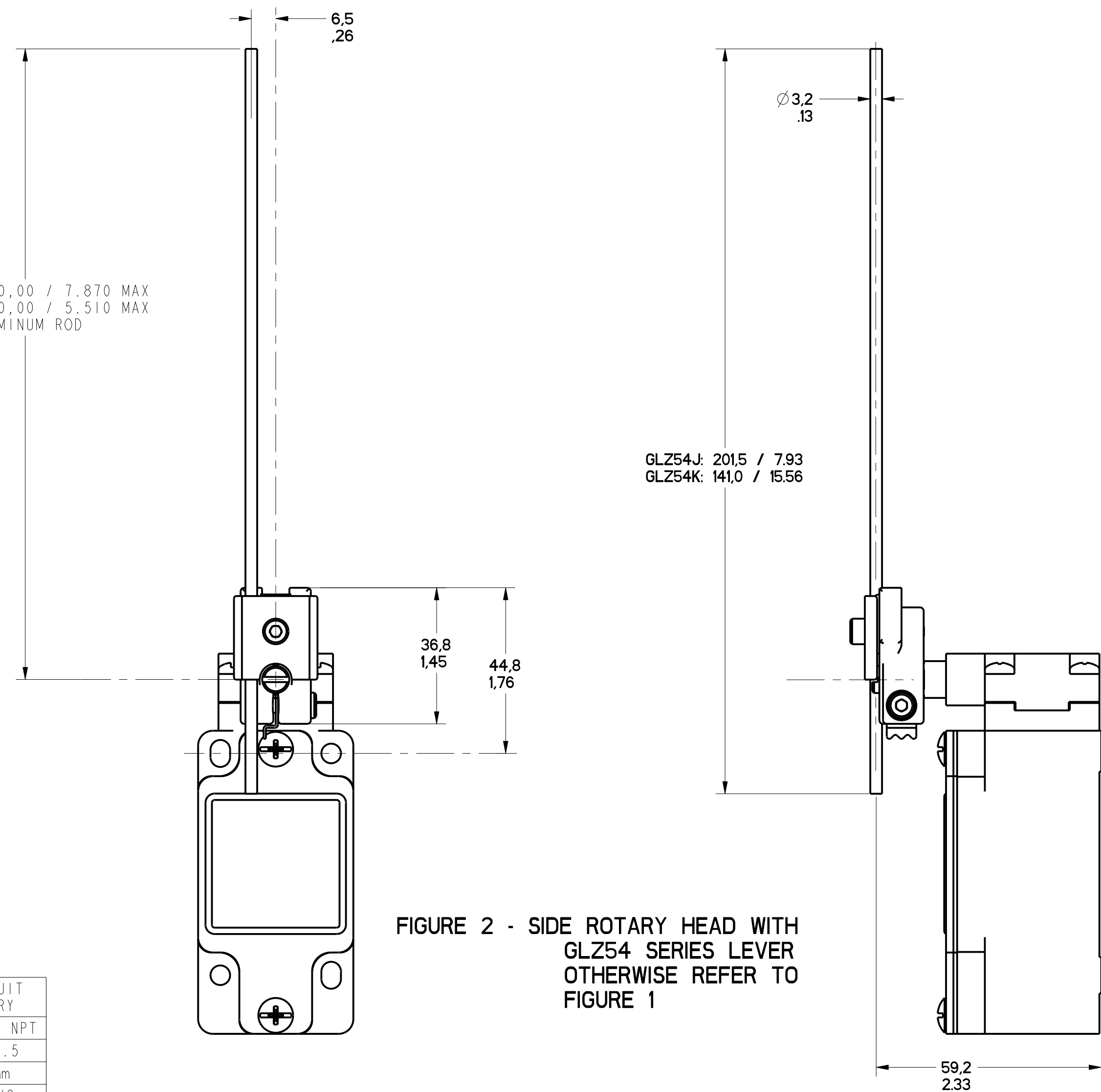


FIGURE 2 - SIDE ROTARY HEAD WITH GLZ54 SERIES LEVER OTHERWISE REFER TO FIGURE 1

FIGURE	CATALOG LISTING	CONDUIT ENTRY
1A	GL*A SERIES	1/2-14 NPT
1B	GL*B SERIES	PG13.5
1C	GL*C SERIES	20mm
1D	GL*D SERIES	PF1/2

ELECTRICAL RATING			
AC		DC	
A600 Ue	AC15 Ie	O300 Ue	DC13 Ie
(VOLTS)	(AMPS)	(VOLTS)	(AMPS)
120	6	24	2.8
240	3	125	.55
380	1.9	250	.27
480	1.5		
500	1.4		
600	1.2		

ENVIRONMENTAL RATING
IP67
NEMA/UL TYPES 1, 4, 12, 13

NOTES

- HEADS MAY BE INDEXED IN 90° INCREMENTS.
- LEVERS MAY BE KEYED TO THE SHAFT AT 90° INCREMENTS. THEY MAY ALSO BE ATTACHED, BUT NOT KEYED ANYWHERE ON THE SHAFT.
- FOR ADDITIONAL LEVERS SEE "M" DRAWING CHART GLZ5.
- THE LEFT INDICATOR IS GREEN AND INDICATES "POWER ON" IT IS ON GLH SERIES PRODUCTS ONLY. THE RIGHT INDICATOR IS YELLOW AND INDICATES "OUTPUT STATUS" IT IS ON GLF AND GLH SERIES PRODUCTS ONLY.
- THE MAXIMUM VOLTAGE, V_e OF GLF AND GLH SERIES PRODUCTS IS THE MAXIMUM RATED VOLTAGE OF INDICATION LIGHTS.
- FREE POSITION, OPERATE POINT, OVERTRAVEL AND PRETRAVEL ALL TO EN50041.
- CAM TRAVEL FOR FIG 9 ONLY APPLIES WHEN LEVER IS ADJUSTED TO 38.1 / 1.50.
- THE MAXIMUM VOLTAGE, V_e OF "06" AND "36" BASIC SWITCH CODE IS 500V (A500) TEMPERATURE RANGE.
- ALL PRODUCTS EXCEPT w/SIDE ROTARY OPERATING HEAD) OPERATING: -25°C TO +85°C / -13°F TO +185°F STORAGE: -40°C TO +85°C / -40°F TO +185°F (PRODUCTS w/SIDE ROTARY OPERATING HEAD) OPERATING: -40°C TO +85°C / -40°F TO +185°F STORAGE: -40°C TO +85°C / -40°F TO +185°F

CATALOG LISTING	BODY DIMENSIONS, FIGURE	HEAD DIMENSIONS, FIGURE	HEAD ACTUATION, FIGURE
GLA***	I	N/A	N/A
GLF***	I	N/A	N/A
GLH***	I	N/A	N/A
GLA***	1A	N/A	N/A
GLB***	1B	N/A	N/A
GLC***	1C	N/A	N/A
GLD***	1D	N/A	N/A
GL***A1*	I	8	8
GL***A2*	I	3	9
GL***A4*	I	2	10
GL***A5*	I		8
GL***B	I	4	11
GL***C	I	5	13A, 13B
GL***D	I	6	14A, 14B
GL***E7A	I	7A	12
GL***E7B	I	7	12
GL***E7C	I	7E	15
GL***E7D	I	7B	12
GL***K8A	I	7C	15
GL***K8B	I	7D	15
GL***K8C	I	7	15

THIS DRAWING COVERS A PROPRIETARY ITEM AND IS THE PROPERTY OF MICRO SWITCH, A DIVISION OF HONEYWELL. THIS DRAWING IS NOT TO BE COPIED OR USED WITHOUT THE APPROVAL OF MICRO SWITCH.		CATALOG LISTING	
FED. MFG. CODE 91929		GL SERIES CHART 1	
MICRO SWITCH a Honeywell Division		SWITCH, ENCLOSED	

THIRD ANGLE PROJECTION			
SCALE FULL			
DO NOT SCALE PRINT			
TOLERANCES			
APPLY TO DESIGN UNITS. CONVERSIONS ARE ONLY FOR REFERENCE. UNLESS NOTED, TOLERANCES ARE:			
NO PLACES	SI METRIC	US CUSTOMARY	
ONE PLACE	±.1	±.1	±.1
TWO PLACES	±.01	±.01	±.01
THREE PLACES	±.001	±.001	±.001
ANGLES	±.1°	±.1°	±.1°
DESIGN UNITS	SI METRIC	US CUSTOMARY	
WEIGHT			



M	GL SERIES CHART 1	
	PAGE 2 OF 13	REPLACES
RELEASE NO. PR-20782		



M	GL SERIES CHART 1	
	PAGE 2 OF 13	REPLACES
RELEASE NO. PR-20782		



M	GL SERIES CHART 1	
	PAGE 2 OF 13	REPLACES
RELEASE NO. PR-20782		

M	GL SERIES CHART 1	
	PAGE 2 OF 13	REPLACES
RELEASE NO. PR-20782		

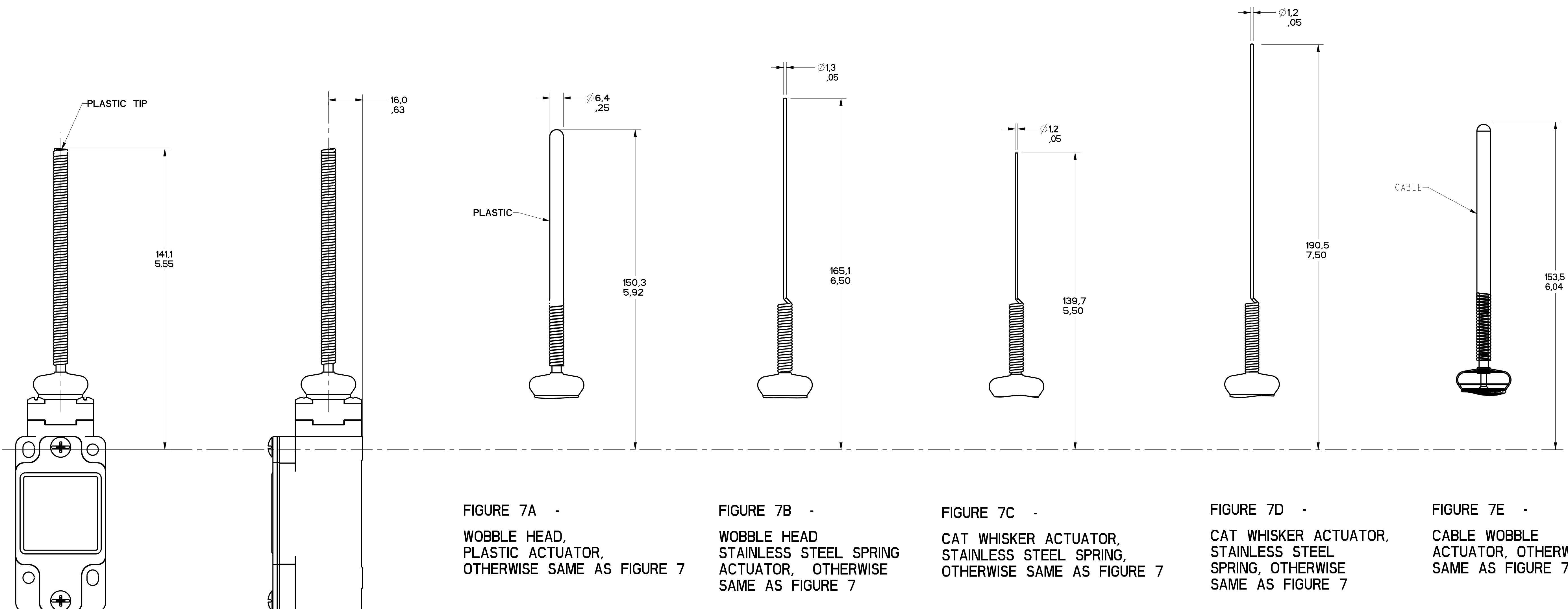


FIGURE 7A -
WOBBLE HEAD,
PLASTIC ACTUATOR,
OTHERWISE SAME AS FIGURE 7

FIGURE 7B -
WOBBLE HEAD
STAINLESS STEEL SPRING
ACTUATOR, OTHERWISE
SAME AS FIGURE 7

FIGURE 7C -
CAT WHISKER ACTUATOR,
STAINLESS STEEL SPRING,
OTHERWISE SAME AS FIGURE 7

FIGURE 7D -
CAT WHISKER ACTUATOR,
STAINLESS STEEL
SPRING, OTHERWISE
SAME AS FIGURE 7

FIGURE 7E -
CABLE WOBBLE
ACTUATOR, OTHERWISE
SAME AS FIGURE 7

FIGURE 7 - WOBBLE HEAD, AND CAT WISKER HEAD
COIL ACTUATOR,
OTHERWISE REFER TO
FIGURE 1

12
DRAWING NUMBER
3 OF 13
RELEASE NO. PR-21557
REPLACES
MDM
CHECK
REVISED
A 1 10 FEB 88
B 2 1 MAY 86
C 3 200541
D 202741
E 0000401
F 0002986
G 0002559
H 0002559
I 0002559
J 0002559
K 0002559
L 0002559
M 0002559
N 0002559
O 0002559
P 0002559
Q 0002559
R 0002559
S 0002559
T 0002559
U 0002559
V 0002559
W 0002559
X 0002559
Y 0002559
Z 0002559

THIS DRAWING COVERS A PROPRIETARY ITEM AND IS THE PROPERTY OF MICRO SWITCH, A DIVISION OF HONEYWELL. THIS DRAWING IS NOT TO BE COPIED OR USED WITHOUT THE APPROVAL OF MICRO SWITCH.

FED. MFG. CODE 91929

CATALOG LISTING

SWITCH, ENCLOSED

GL SERIES CHART 1

DESIGN UNITS

WEIGHT

THIRD ANGLE PROJECTION

SCALE FULL

DO NOT SCALE PRINT

TOLERANCES

APPLY TO DESIGN UNITS. CONVERSIONS ARE ONLY FOR REFERENCE. UNLESS NOTED, TOLERANCES ARE:

	IN	TOL.	MM	TOL.
NO PLACES		±.04		±.04
ONE PLACE	X	±.01	X	±.01
TWO PLACES	X.X	±.005	X.X	±.005
THREE PLACES	X.XX	±.0005	X.XX	±.0005
ANGLES		±2°		±2°

SI METRIC ☒

US CUSTOMARY ☐



FIGURE 8



FIGURE 9



FIGURE 10

[illegible]

PTC/CAD	REVISIONS			A PR-21603		BLR 08FEB08
	DRAWN	A	SAV	27 MAR 96		
		B	CO-93789			
			KED			
			4NOV98			
		C	200541			
			TSM			
			8JUN00			
		D	202747			
			JLH			
			3APR01			
			E	0000401		
			GLH			
			2JUN03			
		F	0002986			
			RS			
	20JAN04					
G	0023759					
	RHP					
	07AUG06					
	H	0037216				
	BS					
	06FEB08					

THIS DRAWING COVERS A PROPRIETARY ITEM AND IS THE PROPERTY OF MICRO SWITCH, A DIVISION OF HONEYWELL. THIS DRAWING IS NOT TO BE COPIED OR USED WITHOUT THE APPROVAL OF MICRO SWITCH.																															
FED. MFG. CODE 91929		CATALOG LISTING																													
MICRO SWITCH a Honeywell Division	SWITCH, ENCLOSED	GL SERIES CHART 1	<table><tr><th>DIM</th><th>TOL</th><th>DIM</th><th>TOL</th></tr><tr><td>mm</td><td>mm (1/16")</td><td>in</td><td>in (1/32")</td></tr><tr><td>NO PLACES</td><td>0.104</td><td>0.1</td><td>0.001-0.1</td></tr><tr><td>ONE PLACE</td><td>0.47-0.106</td><td>0.001</td><td>0.001-0.005</td></tr><tr><td>TWO PLACES</td><td>0.157-0.006</td><td>0.001</td><td>0.131-0.005</td></tr><tr><td>THREE PLACES</td><td></td><td></td><td></td></tr><tr><td>ANGLES</td><td>±2°</td><td></td><td></td></tr></table>	DIM	TOL	DIM	TOL	mm	mm (1/16")	in	in (1/32")	NO PLACES	0.104	0.1	0.001-0.1	ONE PLACE	0.47-0.106	0.001	0.001-0.005	TWO PLACES	0.157-0.006	0.001	0.131-0.005	THREE PLACES				ANGLES	±2°		
			DIM	TOL	DIM	TOL																									
			mm	mm (1/16")	in	in (1/32")																									
			NO PLACES	0.104	0.1	0.001-0.1																									
			ONE PLACE	0.47-0.106	0.001	0.001-0.005																									
TWO PLACES	0.157-0.006	0.001	0.131-0.005																												
THREE PLACES																															
ANGLES	±2°																														
			<table><tr><td>SI METRIC</td><td>US CUSTOMARY</td></tr><tr><td><input checked="" type="checkbox"/></td><td><input type="checkbox"/></td></tr></table>	SI METRIC	US CUSTOMARY	<input checked="" type="checkbox"/>	<input type="checkbox"/>																								
SI METRIC	US CUSTOMARY																														
<input checked="" type="checkbox"/>	<input type="checkbox"/>																														
			DESIGN UNITS																												
			WEIGHT																												

