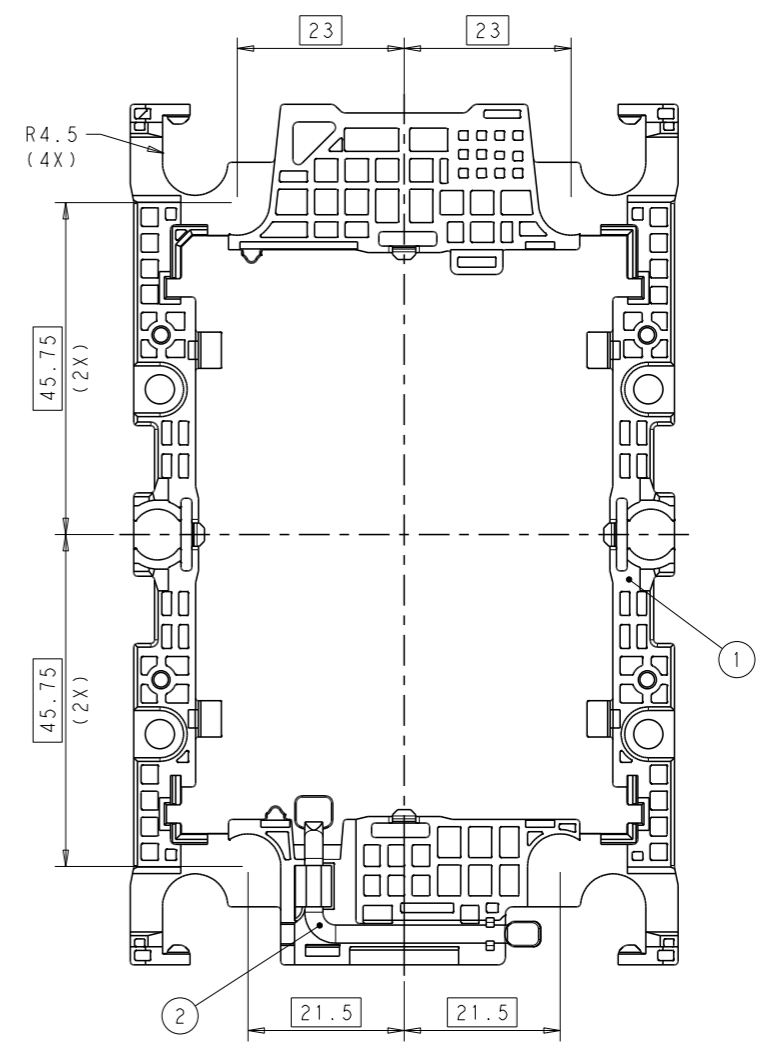
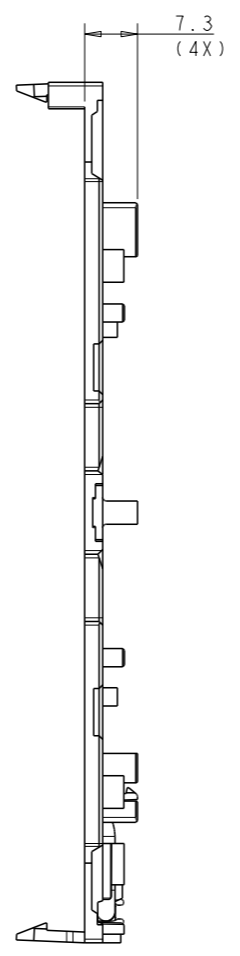
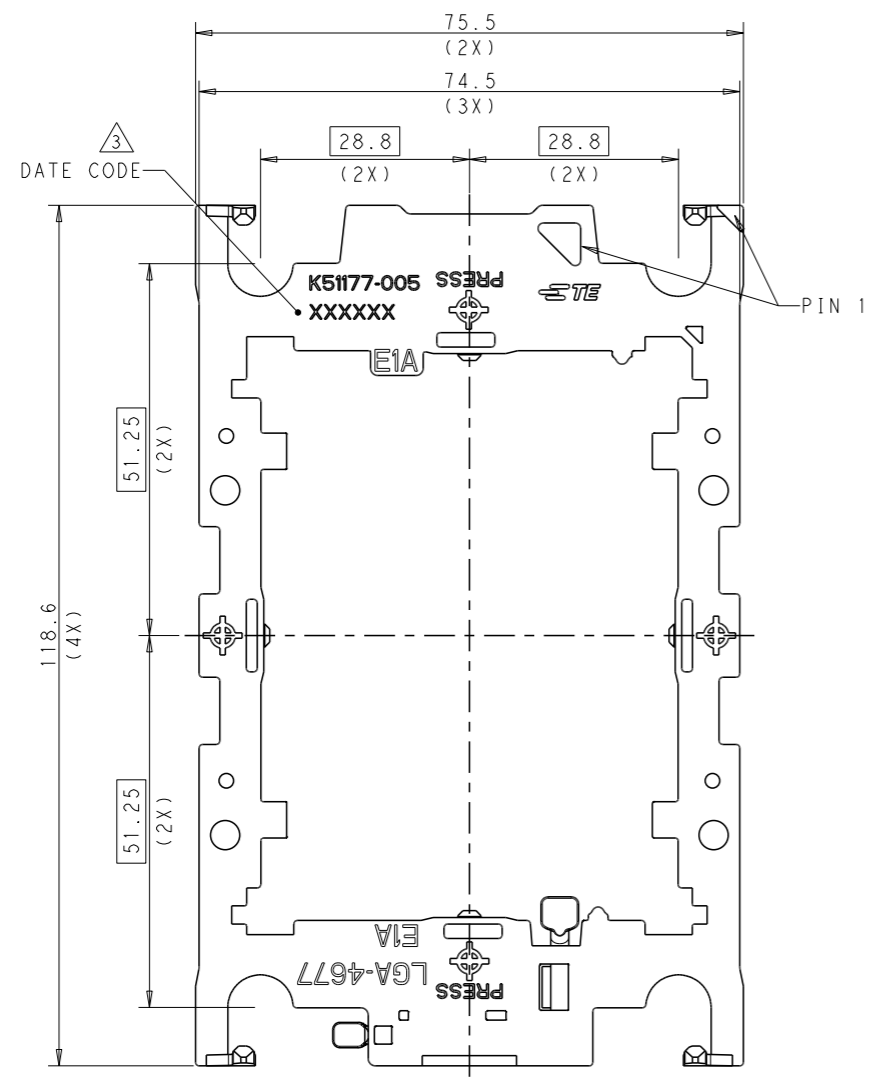


THIS DRAWING IS UNPUBLISHED. RELEASED FOR PUBLICATION. ALL RIGHTS RESERVED. © COPYRIGHT copyright © 2019

REVISIONS				
P	LYR	DESCRIPTION	DATE	APPD
A2		REVISED	08NOV23	J.W S.L

PN 1-2351052-5/-7 AS SHOW



- NOTE:
- MATERIAL:
 - ① CARRIER: PC-ABS, BLACK, UL94V-0
 - ② TIM BREAK LEVER: STAINLESS STEEL
 - THIS PRODUCT IS APPLICABLE FOR LGA4677-1 SOCKET.
 - INDICATED DATE CODE ON THE CARRIER

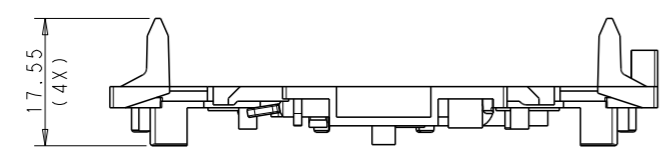
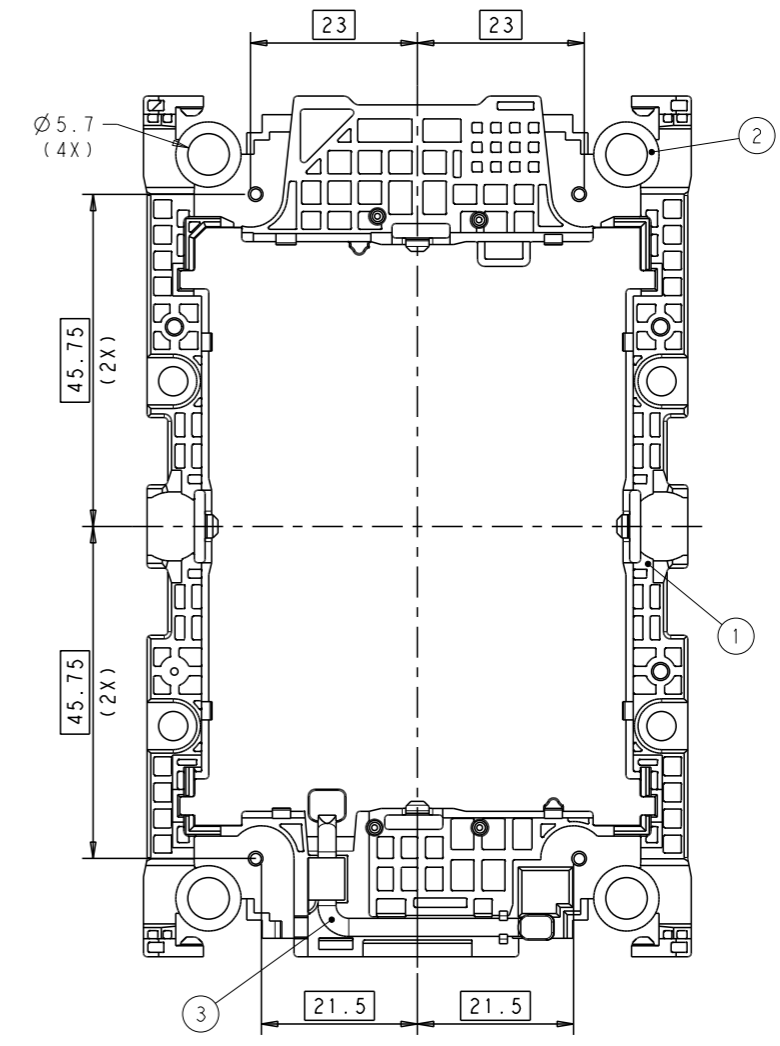
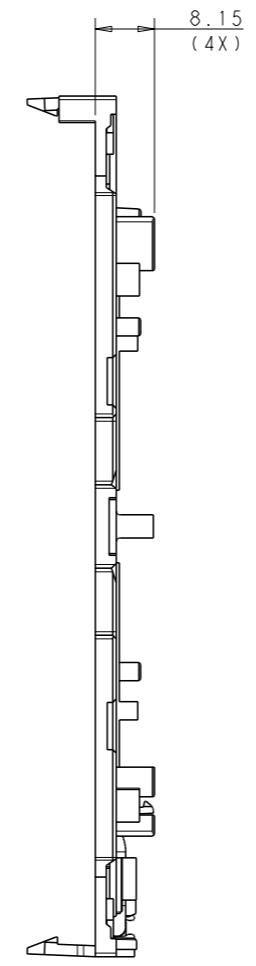
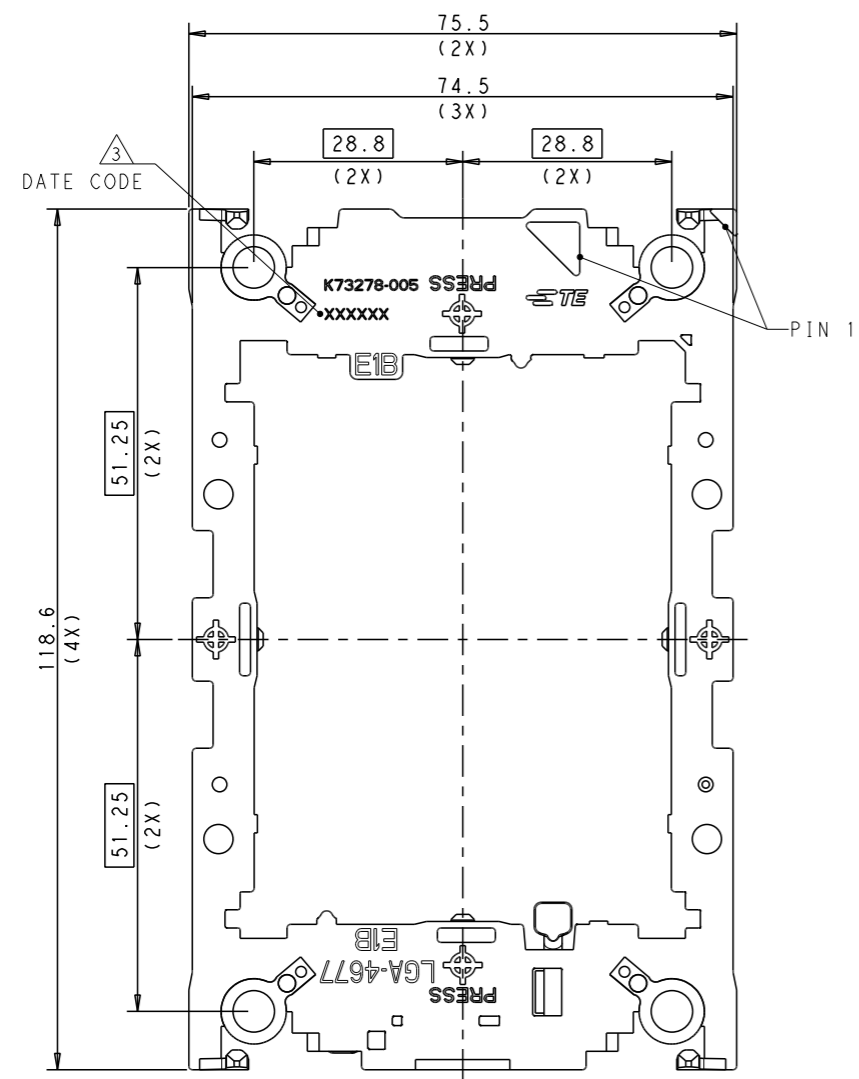
THIS DRAWING IS A CONTROLLED DOCUMENT.		DWN: JEFF WANG 06AGU2019	
DIMENSIONS: mm		CHK: BILL LV 06AGU2019	
TOLERANCES UNLESS OTHERWISE SPECIFIED:		APPD: SIMON LI 06AGU2019	NAME: LGA4677-1 SOCKET
0 PLC	±0.3	PRODUCT SPEC	EIA CARRIER ASSY
1 PLC	±0.3	APPLICATION SPEC	SIZE: CAGE CODE: DRAWING NO: A100779 ©=2351052
2 PLC	±0.3	WEIGHT	RESTRICTED TO
3 PLC	±0.3	CUSTOMER DRAWING	SCALE: 2:1 SHEET 1 OF 4 REV: A2
4 PLC	±0.3		
ANGLES	±0.3		
FINISH			

Printed on 21 Nov 2023 13:59 (China Standard Time) from M4023745

THIS DRAWING IS UNPUBLISHED. RELEASED FOR PUBLICATION
 © COPYRIGHT copyright © TE CONNECTIVITY ALL RIGHTS RESERVED.

REVISIONS			
P	LYR	DESCRIPTION	DATE

PN 1-2351052-2/-8 AS SHOW



NOTE:
 1. MATERIAL:
 ① CARRIER: PC-ABS, BLACK, UL94V-0
 ② SHIM: STAINLESS STEEL
 ③ TIM BREAK LEVER: STAINLESS STEEL
 2. THIS PRODUCT IS APPLICABLE FOR LGA4677-1 SOCKET.
 △ INDICATED DATE CODE ON THE CARRIER

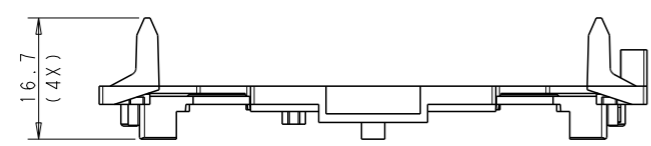
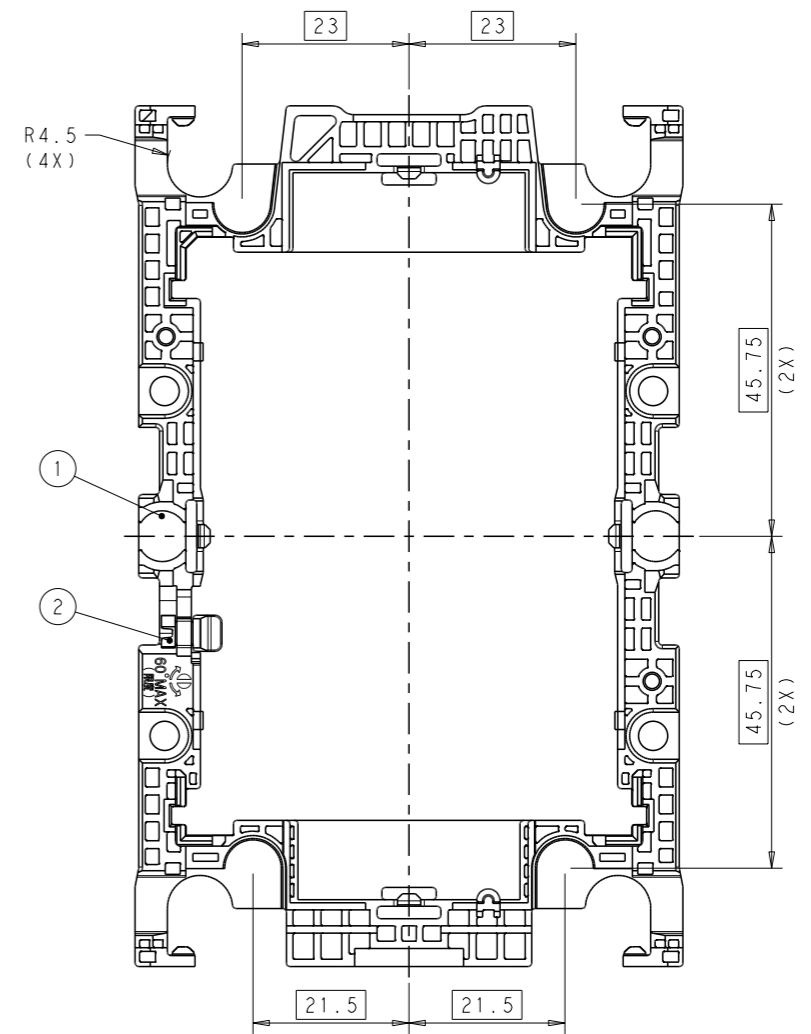
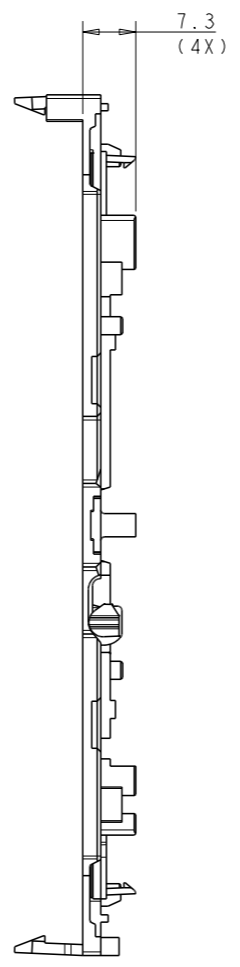
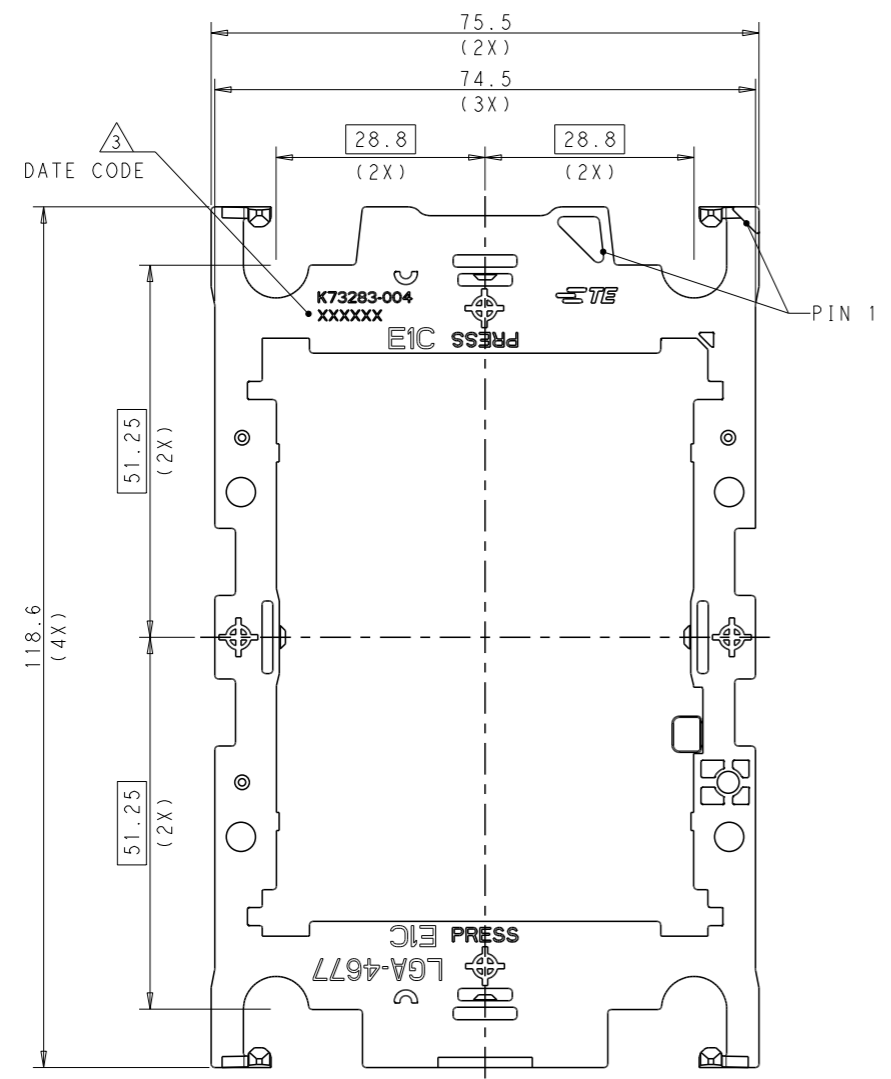
THIS DRAWING IS A CONTROLLED DOCUMENT.		DWN: JEFF WANG 06AGU2019	
		CHK: BILL LV 06AGU2019	
DIMENSIONS:		APPD: SIMON LI 06AGU2019	NAME: LGA4677-1 SOCKET
mm	TOLERANCES UNLESS OTHERWISE SPECIFIED:	PRODUCT SPEC	EIB CARRIER ASSY
⊕	0 PLC ±0.3	APPLICATION SPEC	SIZE: A1
	1 PLC ±0.3	WEIGHT	CAGE CODE: 00779
	2 PLC ±0.3	CUSTOMER DRAWING	DRAWING NO: 2351052
	3 PLC ±0.3		RESTRICTED TO: -
	4 PLC ±0.3		SCALE: 2:1
	ANGLES ±°		SHEET 2 OF 4
	FINISH		REV: A2

Printed on 21 Nov 2023 13:59 (China Standard Time) from M4023745

THIS DRAWING IS UNPUBLISHED. RELEASED FOR PUBLICATION. ALL RIGHTS RESERVED. © COPYRIGHT copyright © TE

REVISIONS			
P	LYR	DESCRIPTION	DATE

PN 1-2351052-6 AS SHOW



NOTE:
 1. MATERIAL:
 ① CARRIER: PC-ABS, BLACK, UL94V-0
 ② TIM BREAK LEVER: STAINLESS STEEL
 2. THIS PRODUCT IS APPLICABLE FOR LGA4677-1 SOCKET.
 ③ INDICATED DATE CODE ON THE CARRIER

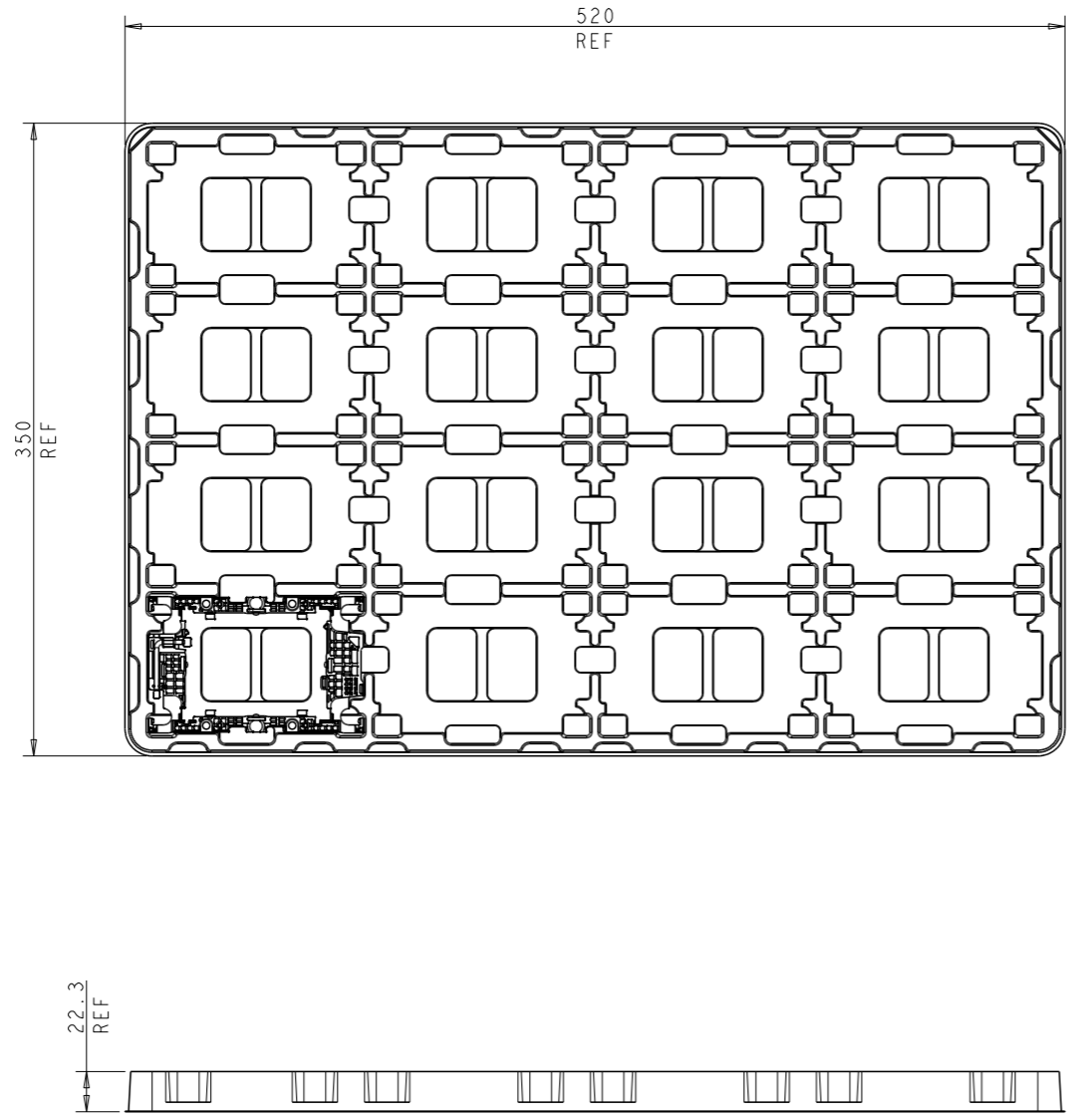
THIS DRAWING IS A CONTROLLED DOCUMENT.		DWN: JEFF WANG 06AGU2019	
		CHK: BILL LV 06AGU2019	
DIMENSIONS: mm		APPD: SIMON LI 06AGU2019	NAME: LGA4677-1 SOCKET
TOLERANCES UNLESS OTHERWISE SPECIFIED:		PRODUCT SPEC	E1C CARRIER ASSY
0 PLC	±0.3	APPLICATION SPEC	SIZE: A1
1 PLC	±0.3	WEIGHT	CAGE CODE: 00779
2 PLC	±0.3	CUSTOMER DRAWING	DRAWING NO: 2351052
3 PLC	±0.3	SCALE: 2:1	SHEET 3 OF 4
4 PLC	±0.3		REV: A2
ANGLES	±0.3		
FINISH			

Printed on 21 Nov 2023 13:59 (China Standard Time) from M4023745

THIS DRAWING IS UNPUBLISHED. RELEASED FOR PUBLICATION
 © COPYRIGHT copyright © TE ALL RIGHTS RESERVED.

REVISIONS				
P	LYR	DESCRIPTION	DATE	APPD

PN 1-2351052-X PACKING AS SHOW



NOTE:
 PN 1-2351052-X, 16PCS/TRAY, 160PCS/BOX

THIS DRAWING IS A CONTROLLED DOCUMENT.		DWN: JEFF WANG 06AGU2019	
		CHK: BILL LV 06AGU2019	
DIMENSIONS: mm		APPD: SIMON LI 06AGU2019	NAME: LGA4677-1 SOCKET
TOLERANCES UNLESS OTHERWISE SPECIFIED: 0 PLC ±0.3 1 PLC ±0.3 2 PLC ±0.3 3 PLC ±0.3 4 PLC ±0.3 ANGLES ±° FINISH -		PRODUCT SPEC -	SOCKET E1 CARRIER ASSY PACKING
MATERIAL -		APPLICATION SPEC -	RESTRICTED TO -
		WEIGHT -	SIZE: A1
		CUSTOMER DRAWING	CASE CODE: 00779 DRAWING NO: 2351052 SCALE: 2:1 SHEET: 4 OF 4 REV: A2

Printed on 21 Nov 2023 13:59 (China Standard Time) from M4023745