

Series 38 EMI Backshells

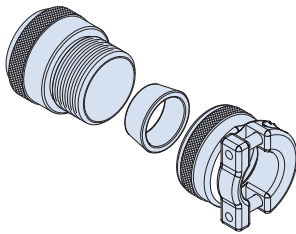
for Series 80 Mighty Mouse Connectors

380MS141 EMI Backshell, Spin Coupling, Lightweight, Low Profile



EMI. Low profile. Spin coupling. Non-environmental. Ultralightweight, compact 380MS141 backshell fits Glenair Series 80 Mighty Mouse connectors. For use with shielded cable. Fold cable braid over tapered ground ring for 360° shielding. Cable clamp has stainless steel screws and lockwashers. Available in aluminum or stainless steel.

Adapter Code M
This accessory fits Series 80 Mighty Mouse Connectors



PART NUMBER

380MS141 M 08 06 -4

Base P/N	380MS141																				
Material/Finish	M Alum/Electroless Nickel MT Alum/Nickel-PTFE NF Alum/Olive Drab Cadmium ZR Alum/Black Zinc-Nickel TZ Alum/Tin-Zinc ZI SST/Passivated																				
Shell Size	See Table 1																				
Entry Size	See Table 2																				
Length	<table border="1"> <thead> <tr> <th>Length Code</th> <th>Length</th> <th>Length Code</th> <th>Length</th> </tr> </thead> <tbody> <tr> <td>4</td> <td>.50 (12.7)</td> <td>10</td> <td>1.25 (31.8)</td> </tr> <tr> <td>5</td> <td>.63 (16.0)</td> <td>12</td> <td>1.50 (38.1)</td> </tr> <tr> <td>6</td> <td>.75 (19.1)</td> <td>16</td> <td>2.00 (50.8)</td> </tr> <tr> <td>8</td> <td>1.00 (25.4)</td> <td></td> <td></td> </tr> </tbody> </table> <p><i>Length in 1/8 inch increments.</i></p>	Length Code	Length	Length Code	Length	4	.50 (12.7)	10	1.25 (31.8)	5	.63 (16.0)	12	1.50 (38.1)	6	.75 (19.1)	16	2.00 (50.8)	8	1.00 (25.4)		
Length Code	Length	Length Code	Length																		
4	.50 (12.7)	10	1.25 (31.8)																		
5	.63 (16.0)	12	1.50 (38.1)																		
6	.75 (19.1)	16	2.00 (50.8)																		
8	1.00 (25.4)																				

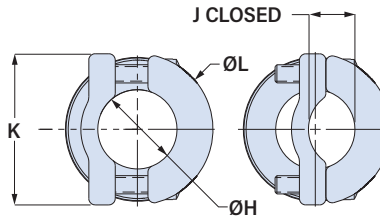
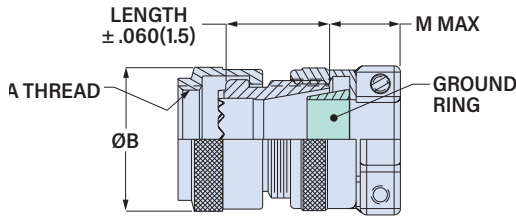


TABLE 1: SHELL SIZE CODE

Shell Size Code	Shell Size		A Thread UNEF-2B	ØB Max.		Max Cable Entry
	Series 800, 801, 803, 804	Series 805		in	mm	
05	5	N/A	0.250-32	.470	11.9	25
06	6	N/A	0.3125-32	.530	13.5	35
11	N/A	8	0.3750-32	.570	14.5	04
07	7	9	0.4375-28	.637	16.2	05
08	8	10	0.500-28	.700	17.8	06
09	9	11	0.5625-24	.758	19.3	07
10	10	12	0.625-24	.819	20.8	08
12	11, 12, 13	13	0.6875-24	.896	22.8	09
13	N/A	15	0.750-20	.930	23.6	10
14	14, 15, 16, 17	18, 19	0.9375-20	1.137	28.9	13
16	19	21	1.0625-18	1.250	31.8	14
17	21	23	1.1875-18	1.387	35.2	16

TABLE 2: ENTRY SIZE

Entry Size	ØH		J Closed ±.015 (0.4)		K ±.015 (0.4)		ØL ±.015 (0.4)		M Max	
	in	mm	in	mm	in	mm	in	mm	in	mm
02	.125	3.2	.075	1.9	.470	11.9	.470	11.9	.375	9.5
25	.156	4.0	.094	2.4	.470	11.9	.470	11.9	.375	9.5
03	.188	4.8	.113	2.9	.530	13.5	.530	13.5	.375	9.5
35	.219	5.6	.131	3.3	.530	13.5	.530	13.5	.375	9.5
04	.250	6.4	.150	3.8	.590	15.0	.590	15.0	.375	9.5
05	.313	8.0	.188	4.8	.655	16.6	.655	16.6	.375	9.5
06	.375	9.5	.225	5.7	.715	18.2	.715	18.2	.375	9.5
07	.438	11.1	.263	6.7	.780	19.8	.780	19.8	.375	9.5
08	.500	12.7	.300	7.6	.840	21.3	.840	21.3	.375	9.5
09	.563	14.3	.375	9.5	.995	25.3	.995	25.3	.375	9.5
10	.625	15.9	.417	10.6	1.055	26.8	1.055	26.8	.445	11.3
11	.688	17.5	.459	11.7	1.120	28.4	1.120	28.4	.445	11.3
12	.750	19.1	.500	12.7	1.180	30.0	1.180	30.0	.445	11.3
13	.813	20.7	.542	13.8	1.245	31.6	1.245	31.6	.445	11.3
14	.875	22.2	.582	14.8	1.305	33.1	1.305	33.1	.445	11.3
15	.938	23.8	.625	15.9	1.370	34.8	1.370	34.8	.445	11.3
16	1.000	25.4	.667	16.9	1.430	36.3	1.430	36.3	.445	11.3