



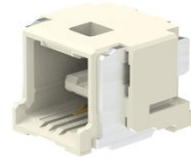
**Part Number :** [2132260230](#)

**Product Description :** 1.50mm Pitch CLIK-Mate Wire-to-Board PCB Receptacle, Single Row, Surface Mount, Right-Angle, 0.38µm Gold (Au) Plating, 2 Circuits, Natural

**Series Number :** 213226

**Status :** Active

**Product Category :** PCB Headers and Receptacles



---

## Documents and Resources

### Drawings

[2132260230 sd.pdf](#)

### 3D Models and Design Files

[STEP AP242](#)

[SOLIDWORKS](#)

[Creo](#)

[Symbol and Footprint \(Multi-Format\)](#)

[2132260230.dxf](#)

### Specifications

[2132269200-SPK-200.pdf](#)


[5025781004-PS-000.pdf](#)

[5025780004-PS-000.pdf](#)

---

## Product Environment Compliance

### Compliance

GADSL/IMDS	Compliant with Exemption 44
China RoHS	 per SJ/T 11365-2006
EU ELV	Not Relevant
Low-Halogen Status	Not Low-Halogen per IEC 61249-2-21
REACH SVHC	Not Contained per D(2025)6375-DC (05 Nov 2025)

EU RoHS	Compliant per EU 2015/863
---------	---------------------------

### Compliance Statements

- EU RoHS
- REACH SVHC
- Low-Halogen

### Industry Documents

- IPC 1752A Class C
- IPC 1752A Class D
- Molex Product Compliance Declaration
- IEC-62474
- chemSHERPA (xml)

### Substances of Interest

- PFAS

### EU RoHS Certificate of Compliance

### Additional Product Compliance Information

## Part Details

### General

Status	Active
Category	PCB Headers and Receptacles
Series	213226
Description	1.50mm Pitch CLIK-Mate Wire-to-Board PCB Receptacle, Single Row, Surface Mount, Right-Angle, 0.38µm Gold (Au) Plating, 2 Circuits, Natural
Application	Signal, Wire-to-Board
Component Type	PCB Receptacle
Product Name	CLIK-Mate
UPC	193264240920

### Agency

UL	E29179
----	--------

### Electrical

Current - Maximum per Contact	2.0A
Voltage - Maximum	100V AC (RMS)/DC

## Physical

Circuits (Loaded)	2
Circuits (maximum)	2
Color - Resin	Natural
Durability (mating cycles max)	30
First Mate / Last Break	No
Glow-Wire Capable	No
Guide to Mating Part	Yes
Keying to Mating Part	Yes
Lock to Mating Part	Yes
Material - Metal	Copper Alloy
Material - Plating Mating	Gold
Material - Plating Termination	Tin
Material - Resin	Polyamide
Net Weight	391.000/mg
Number of Rows	1
Orientation	Right Angle
Packaging Type	Embossed Tape on Reel
PCB Locator	No
PCB Retention	Yes
Pitch - Mating Interface	1.50mm
Pitch - Termination Interface	1.50mm
Plating min - Mating	0.380µm
Plating min - Termination	0.381µm
Polarized to Mating Part	Yes
Polarized to PCB	No
Stackable	No
Temperature Range - Operating	-40° to +105°C
Termination Interface Style	Surface Mount

---

## Mates With / Use With

### Mates with Part(s)

Description	Part Number
1.50mm Pitch CLIK-Mate Single	<u>502578</u>

Row Plug Housings	
-------------------	--

---

This document was generated on Mar 02, 2026