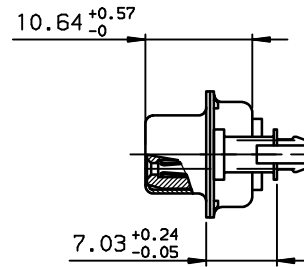
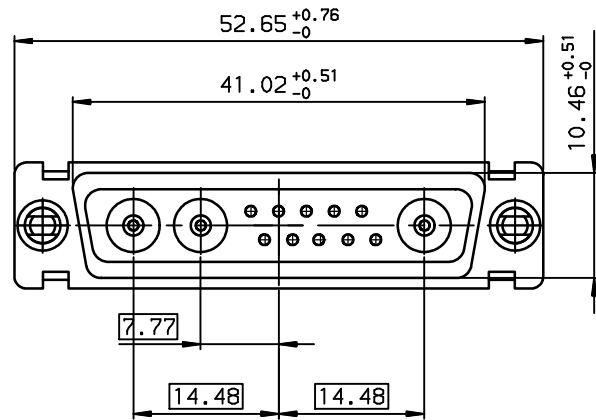


A

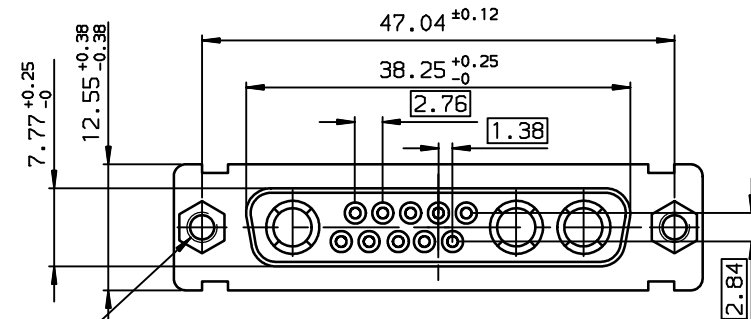
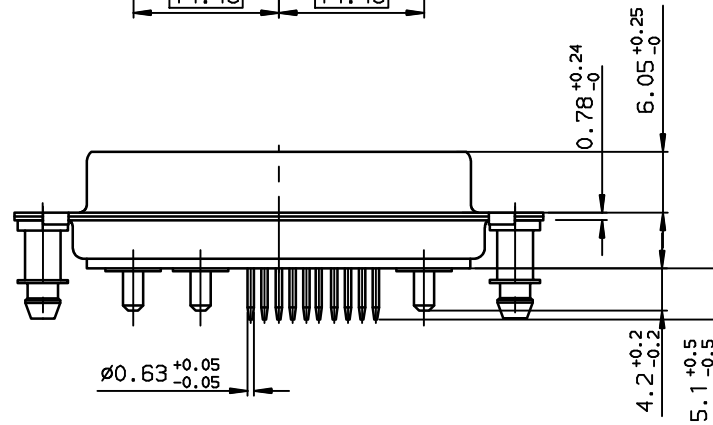
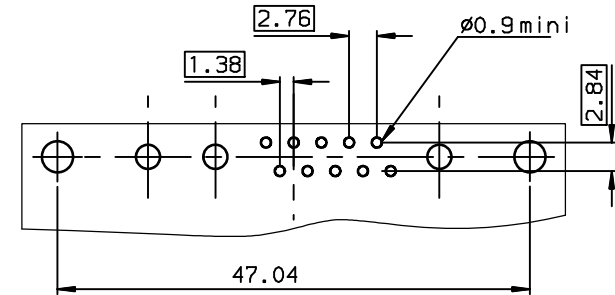
B

C

D



LAYOUT DIMENSIONS (after plating)
CONNECTOR SIDE VIEW



Threaded

TIN-LEAD PART NUMBER

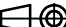


DBL13W3S300G30	M3
DB013W3S300G30	UNC 4.40
DBL13W3S300G40	M3
DB013W3S300G40	UNC 4.40
DBL13W3S300H30	M3
DB013W3S300H30	UNC 4.40
DBL13W3S300H40	M3
DB013W3S300H40	UNC 4.40
PART NUMBER	Threaded A

LEAD FREE PART NUMBER

DBL13W3S300G30LF	M3
DB013W3S300G30LF	UNC 4.40
DBL13W3S300G40LF	M3
DB013W3S300G40LF	UNC 4.40
DBL13W3S300H30LF	M3
DB013W3S300H30LF	UNC 4.40
DBL13W3S300H40LF	M3
DB013W3S300H40LF	UNC 4.40
PART NUMBER	Threaded A

GENERAL CHARACTERISTICS AND ROHS INFORMATIONS:
SEE DRAWING C01-8639-0000

European Views

www.fciconnect.com			surface ISO 1302		tolerance std ISO 406 ISO 1101		projection 		mm 	
			TOLERANCES UNLESS OTHERWISE SPECIFIED							
Dr	JARRY	1997/02/10	ANGULAR	LINEAR	0.X	±0.1	size A3	Scale 1.5		
Eng	PESSON	1997/02/10			0.XX	±0.1		ECN LS06-0095		
Chr	LEGARE	1997/02/10			0.XX* ±2*	±0.1				
Appr	LEGARE	1997/02/10	Product family				D-SUB	Spec ref -		
			title SOCKET CONNECTOR WITH STRAIGHT CONTACT				dwg no C01-8639-1503		Rev. F	
			catalog no -				CUSTOMER		sheet 1 of 1	

rev	ecn no	dr	date
D	-	DEB	2003/10/21
E	LS05-001	MPE	2005/03/07
F	LS06-0095	LG0	2006/07/20
-	-	-	-
-	-	-	-
-	-	-	-
-	-	-	-