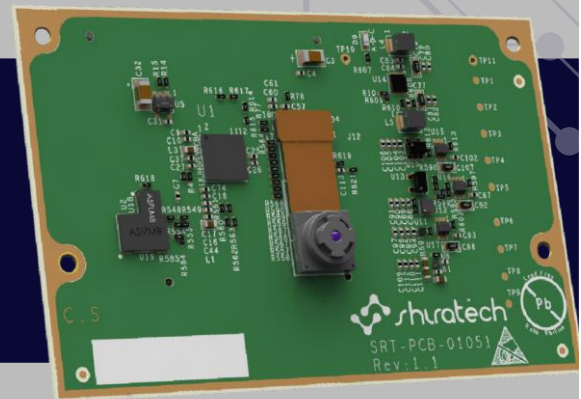


Camera Mezzanine for 96Boards VisiON96-AR0830



AR0830 CMOS IMAGING SENSOR

Main features:

- 8 Mp CMOS Sensor with Advanced 1.4 um Pixel Stacked BSI Technology
- Enhanced NIR Response on 850 nm and 940 nm wavelength
- LI-HDR T1/T2 Readout to Enable HDR Processing in ISP Chip
- X-tended Dynamic Range™ (xDR)
- Super Low Power Mode
- Wake On Motion (WOM)/Motion Detection
- Data Interfaces: MIPI D-PHY – 4 Lanes
- Physical dimensions: 8.5x8.5x5.15[mm], Including Flat cable 23.5x8.5[mm]

AP1302 IMAGE COPROCESSOR

Advanced Image Coprocessor for
ONSEMI Sensors

Main features:

- Optimized for operation with ONSEMI Clarity+™ Pixel technology sensors as well as Bayer pattern CMOS Image Sensors (CIS)
- Up to 13 MP (4224x3156) sensor support
- Designed to support ONSEMI sensors that provide video interlaced HDR (iHDR)
- 450 MP/second processing (13Mp at 30/1080p at 120/720p at 240 – subject to sensor limitations)
- Color gaining and gamma correction
- Frame rate reduction, image resizing and clipping
- Auto exposure, auto white balance, auto focus, auto flicker detection and mitigation

Board Information:

- Physical dimensions: 85 x 54 x 12mm
- Power consumption: Less than 1W

Ordering Option

- P/N: SRT-VISION96-AR0830

→ OVERVIEW

VisiON-AR0830 is a 96Boards compatible add on board with ONSEMI 8MP imaging sensor and AP1302 ISP for evaluation and prototyping

It uses 34pin IAS Module standard connector

The AR0830 sensor has been designed for video conferencing, web cams and machine vision cameras

→ BLOCK DIAGRAM

