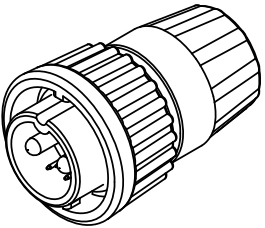
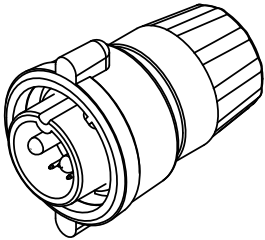


- NOTES:
1. PARTS TO BE BULK PACKED.
2. CONTACTS ARE SUPPLIED LOOSE.
3. ALL DIMENSIONS ARE FOR REFERENCE ONLY EXCEPT WHERE NOTED WITH TOLERANCE.

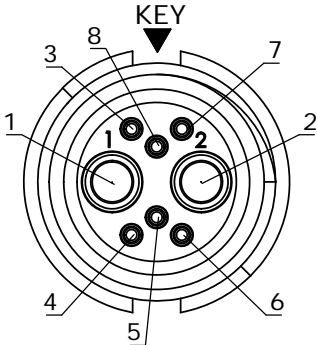
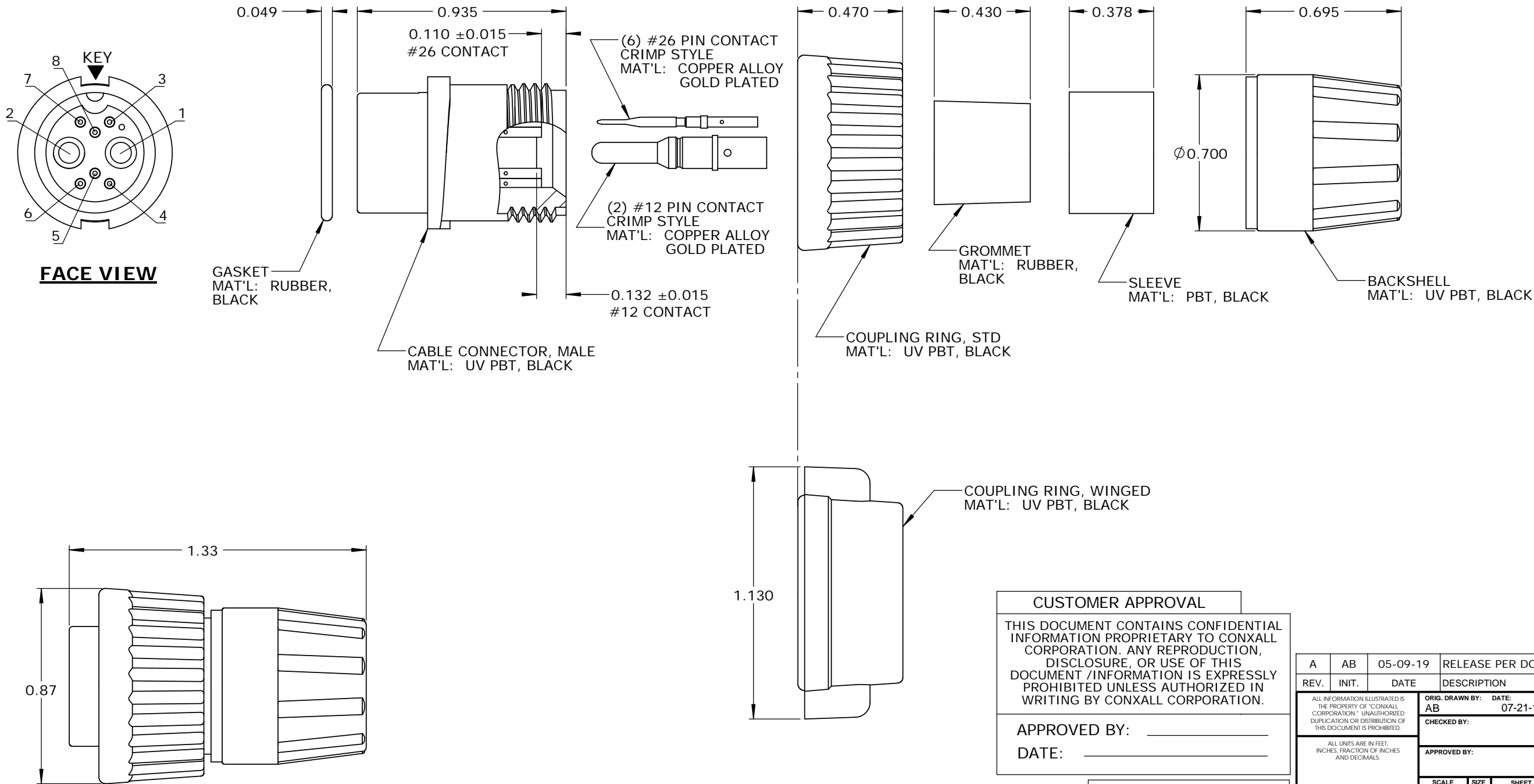
| ASSY P/N | COUPLING RING P/N | CABLE O.D. |
|----------------|-------------------|---------------------------|
| W3B80-8PG-335 | 4282V4 | .350-.370 IN. [8.9-9.4mm] |
| W3B80-8PG-335W | 4482V4 | .350-.370 IN. [8.9-9.4mm] |



STD COUPLING RING
P/N: W3B80-8PG-3XX



WINGED COUPLING RING
P/N: W3B80-8PG-3XXW



WIRE VIEW

| | |
|---|-------------|
| CUSTOMER APPROVAL | |
| THIS DOCUMENT CONTAINS CONFIDENTIAL INFORMATION PROPRIETARY TO CONXALL CORPORATION. ANY REPRODUCTION, DISCLOSURE, OR USE OF THIS DOCUMENT /INFORMATION IS EXPRESSLY PROHIBITED UNLESS AUTHORIZED IN WRITING BY CONXALL CORPORATION. | |
| APPROVED BY: _____ | DATE: _____ |
| RoHS COMPLIANT | |

| | | | |
|--|----------------|--|----------------------------|
| A | AB | 05-09-19 | RELEASE PER DOR 14-6281TC |
| REV. | INIT. | DATE | DESCRIPTION |
| ALL INFORMATION ILLUSTRATED IS THE PROPERTY OF "CONXALL CORPORATION." UNAUTHORIZED DUPLICATION OR DISTRIBUTION OF THIS DOCUMENT IS PROHIBITED. | | ORIG. DRAWN BY: AB | DATE: 07-21-14 |
| ALL UNITS ARE IN FEET, INCHES, FRACTION OF INCHES AND DECIMALS. | | CHECKED BY: | |
| APPROVED BY: | | TITLE: CABLE END CONNECTOR KIT (2)#12 + (6)#26 PIN CONTACTS, CRIMP MULTI-CON-X, WEATHER RESISTANT STANDARD PRODUCT | |
| SCALE: NTS | SIZE: B | SHEET: 1 OF 1 | CUSTOMER: STANDARD PRODUCT |
| FILE: SAME AS P/N | DIRECTORY: SLW | PART NUMBER: W3B80-8PG-3XX(W) | REV A |