
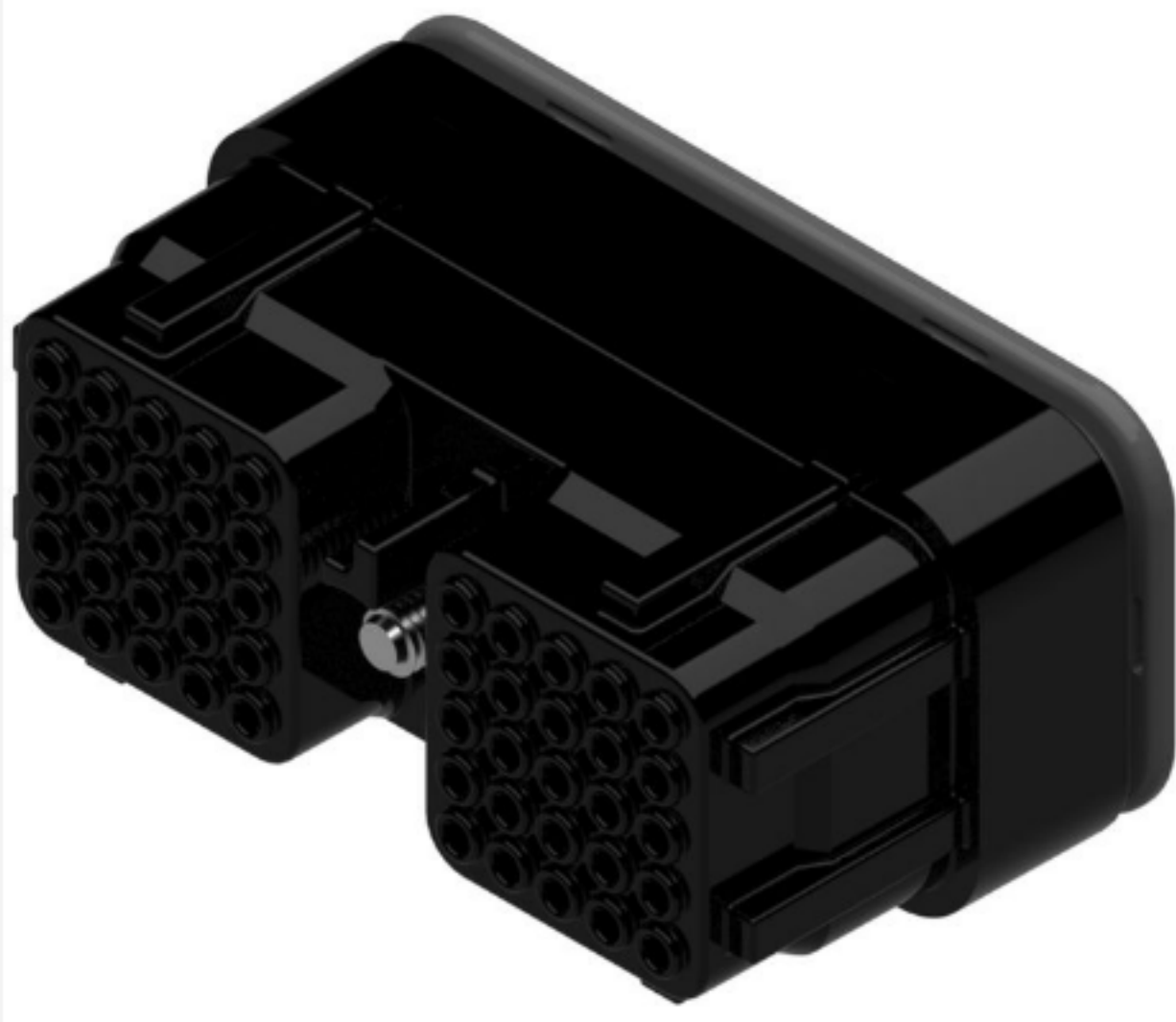


SEARCH KEYWORD, PART NUMBER 



Part Number: 13837195

Product Name: [HES Circular Series Sealed](#)

50 way Female HES Series Black CONN

 [Share](#)  [Print](#) [Contact Us About This Item](#)

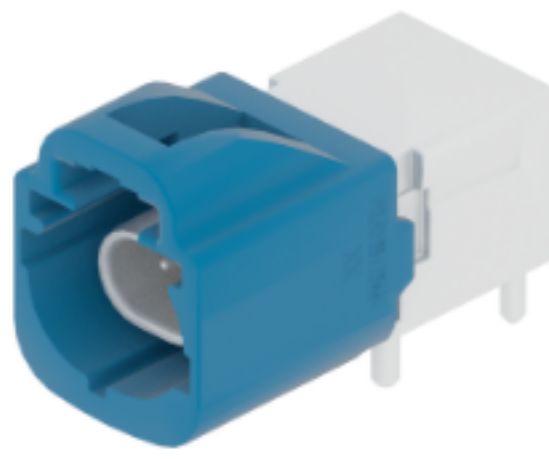
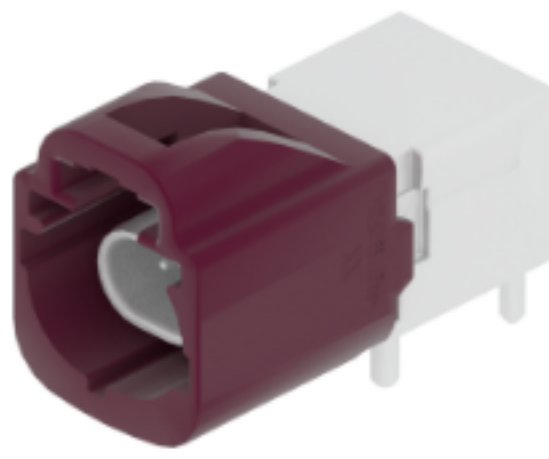
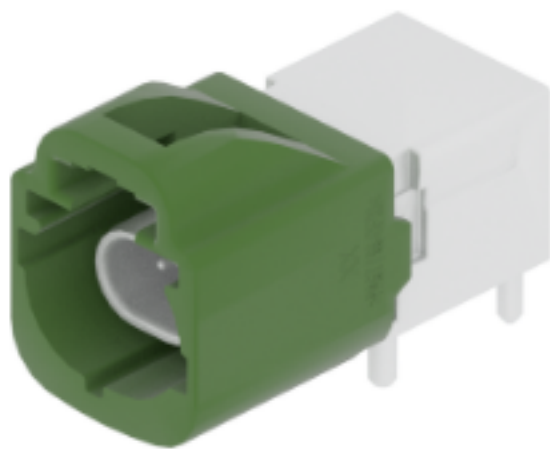
GET SAMPLES 

ATTRIBUTES DOCUMENTS ECAD COMPATIBLE PARTS

Attributes

Product Family HES	Height (mm) 32.31
Product Series Circular Series Sealed	Color BLACK
Max. operating temperature +125°C	Primary Locking Mechanism LOCKING LANCE
Min. operating temperature -40°C	Weight (g) 71.74776
No. of Ways 50	Terminal 1 Size 1
Cable Exit Orientation 180°	Sealing Sealed
Gender Female	Primary Material PA66 GF 33
Length (mm) 38.7	Sealing Rating IPX9K
Width (mm) 68.73	

Other Products



RESOURCE-CENTER-ITEM
COV CONN CLIP CDT BLACK

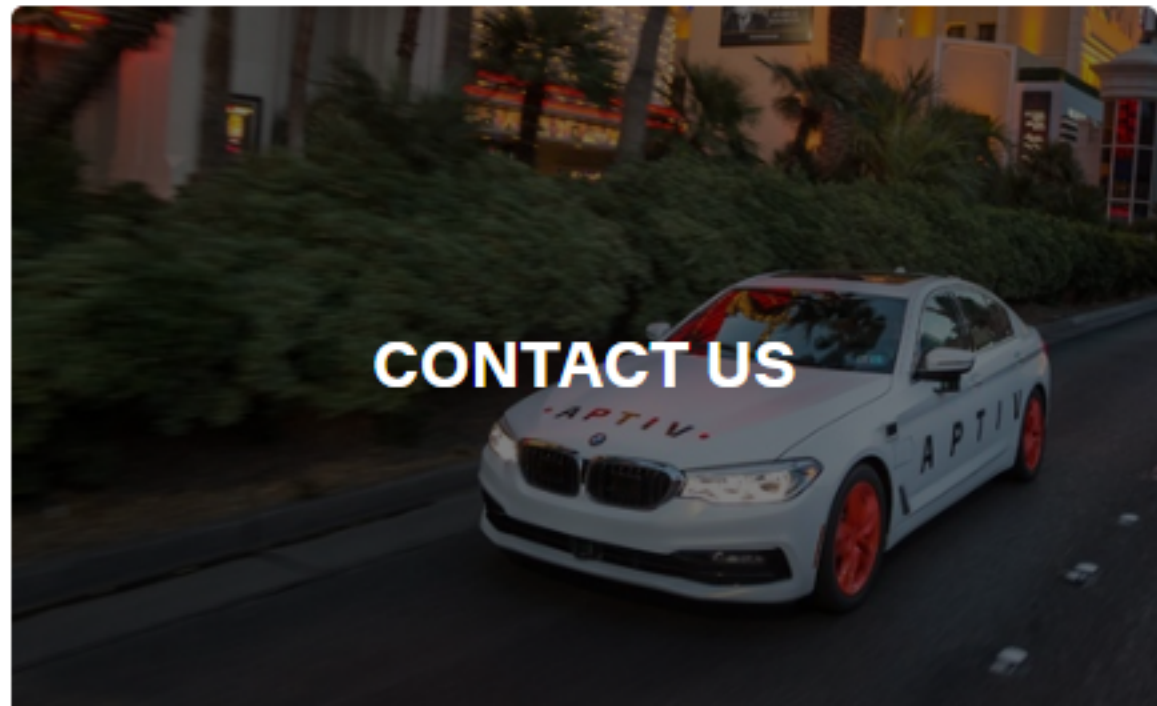
35829171
2 Way Male 0.5 Unsealed Green

35829170
2 Way Male 0.5 Unsealed Violet

35829169
2 Way Male 0.5 Unsealed Blue



Next Steps



Keep pace with where mobility is going.

See what's next and get the latest updates.

SIGN UP TO GET UPDATES 

Don't worry. We won't flood your inbox or share your email.

INSIGHTS

EXPLORE ALL ARTICLES
CASE STUDIES
MOBILITY INSIDER
RESEARCH PUBLICATIONS
WHITE PAPERS

SOLUTIONS

Advanced Safety
Connected Services
Connection Systems
Connectivity and Security
Electrical Distribution Systems
Middleware & DevOps
Smart Vehicle Architecture
User Experience
Vehicle Electrification Systems
HellermannTyton
Interconnect Automotive Solutions
Motional
Winchester Interconnect
Wind River

CATALOG

ABOUT

Our Mission
Our Businesses
Our Locations
Our Foundation
Sustainability
Suppliers

PRIVACY

Terms of Use
Cookie Policy

LEGAL & COMPLIANCE

CAREERS

INVESTORS
NEWSROOM
CONTACT