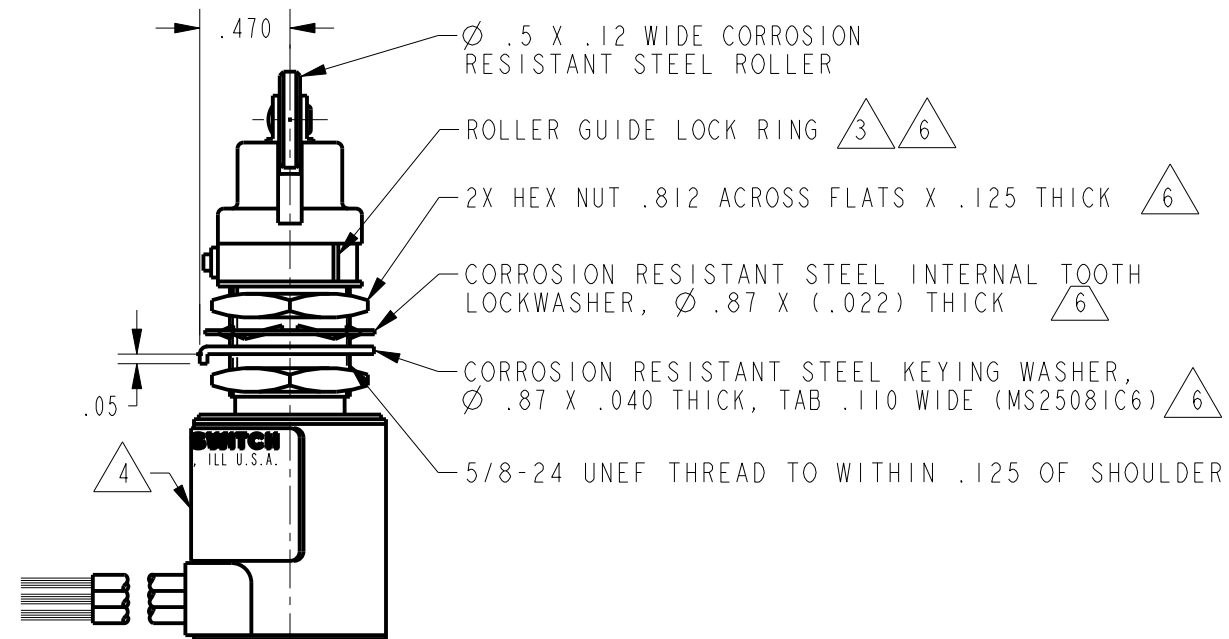
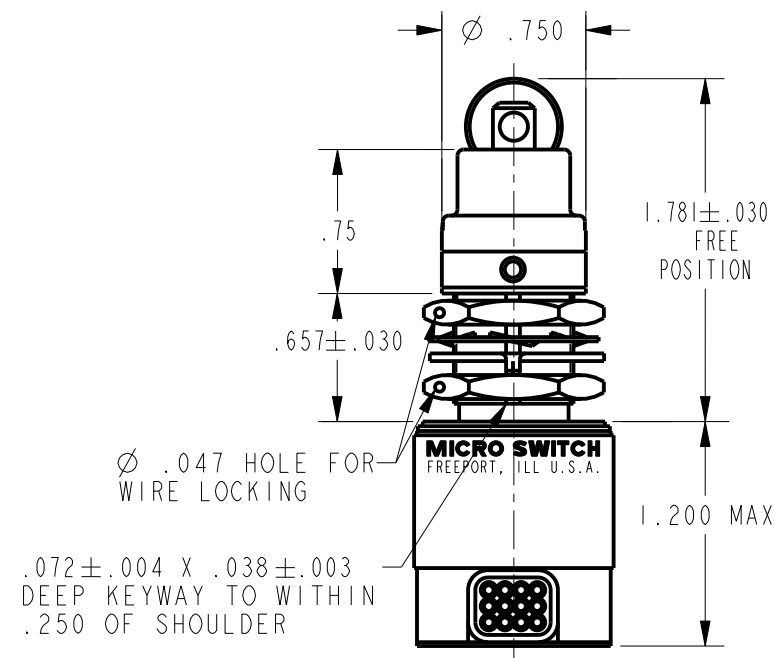
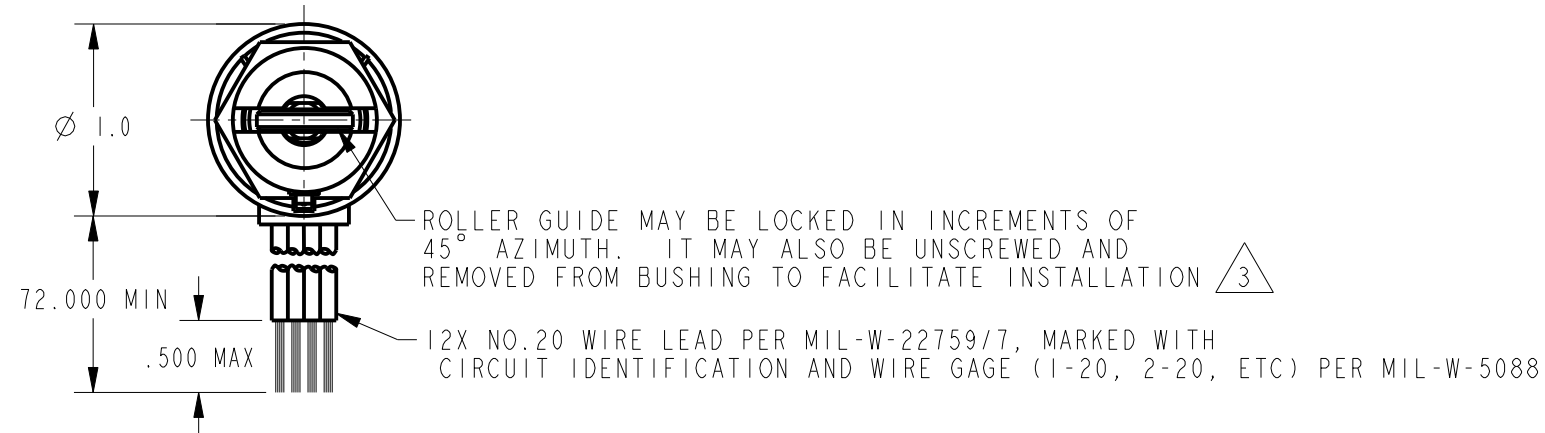


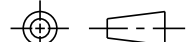
CIRCUIT DIAGRAM



NOTES

- 1 - CORROSIVE RESISTANT STEEL ENCLOSURE
- 2 - SWITCH SEALED PER MIL-PRF-8805 SYMBOL 5
- 3 TO ADJUST ROLLER DIRECTION, REMOVE ROLLER GUIDE LOCKRING, SCREW ROLLER GUIDE DOWN AS FAR AS POSSIBLE, THEN UNSCREW TO DESIRED DIRECTION SECURE BY REPLACING ROLLER GUIDE LOCKRING
- 4 CIRCUIT DIAGRAM AND CATALOG LISTING ARE SHOWN ON NAMEPLATE
- 5 COINCIDENCE OF OPERATING AND RELEASING POINTS: .010 INCH OF PLUNGER TRAVEL
- 6 HARDWARE MAY BE PACKAGED UNASSEMBLED PER MIL-PRF-8805

ANSI Y14.5M-1982 APPLIES

THIS DRAWING COVERS A PROPRIETARY ITEM AND IS THE PROPERTY OF MICRO SWITCH. A DIVISION OF HONEYWELL. THIS DRAWING IS NOT TO BE COPIED OR USED WITHOUT THE APPROVAL OF MICRO SWITCH				THIRD ANGLE PROJECTION 	
CHARACTERISTICS		ELECTRICAL DATA		SCALE FULL	
OPERATING FORCE ----- 6 -12 LB		CONTACT ARRANGEMENT		DO NOT SCALE PRINT	
FULL OVERTRAVEL FORCE ----- 30 LB MAX		4X S P D T		UNLESS OTHERWISE SPECIFIED TOLERANCES ARE	
RELEASE FORCE ----- 4 LB MIN		LOAD	28 VDC		ONE PLACE (.0) ±.030
PRETRAVEL ----- .040 MAX			SEA LEVEL	100,000 FT	TWO PLACE (.00) ±.015
DIFFERENTIAL TRAVEL ----- .020 MAX		RES	I	I	THREE PLACE (.000) ±.005
OVERTRAVEL ----- .250 MIN		IND	.5	.5	ANGLES ±
				WEIGHT	