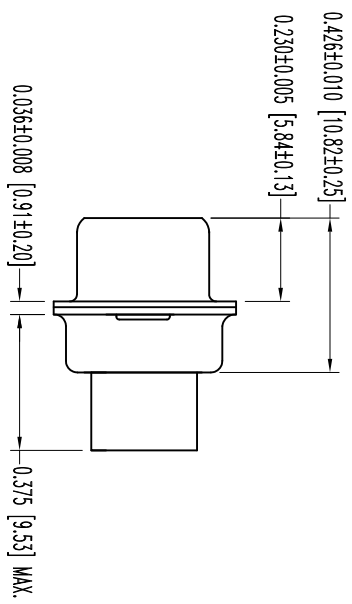
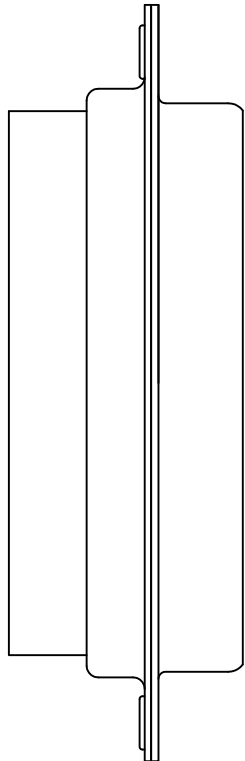
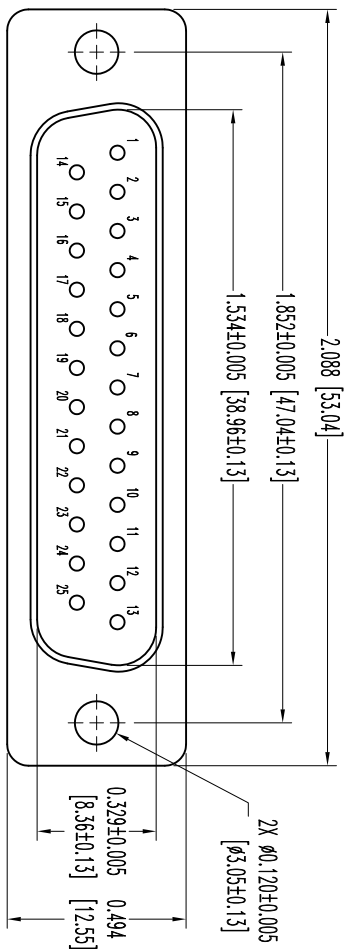


THIS DRAWING CONTAINS INFORMATION PROPRIETARY TO POSITRONIC AND ITS SUBSIDIARIES. POSITRONIC BELIEVES THE DATA ON THIS DRAWING TO BE RELIABLE, SINCE THE USER HAS TAKEN THE NECESSARY PRECAUTIONS. POSITRONIC AND ITS SUBSIDIARIES ASSUME NO RESPONSIBILITY FOR RESULTS OBTAINED OR DAMAGES INCURRED FROM USE OF SUCH INFORMATION IN WHOLE OR IN PART.




NOTES:

1. MATERIALS AND FINISHES:  
INSULATOR: GLASS FILLED DAP PER ASTM-D-5948, SDG-F, UL 94V-0, GREEN COLOR.  
SHELLS: STEEL, ZINC PLATE WITH CHROMATE SEAL.
2. DETAILED PRODUCT, ELECTRICAL, AND MECHANICAL INFORMATION IS AVAILABLE IN THE LATEST STANDARD DENSITY D-SUB PRODUCT PUBLICATION. VISIT [CONNECTPOSITRONIC.COM/PRODUCTS/45/STANDARDENSITYD-SUBMINIATURE](http://CONNECTPOSITRONIC.COM/PRODUCTS/45/STANDARDENSITYD-SUBMINIATURE) OR [CONNECTPOSITRONIC.COM](http://CONNECTPOSITRONIC.COM).
3. CONNECTORS ARE ROHS COMPLIANT PER ROHS DIRECTIVE 2002/95/EC OF 27 JAN 2003.
4. DIMENSIONS ARE IN INCHES [MILLIMETERS].





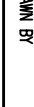
DATE	REV	REVISION RECORD	APP	DR	CK
12-20-05	NC	ECO 252225	TK	YK	TK
12-6-11	A	ECO 34854	COLM	ME	COLM

SK6846



**POSITRONIC INDUSTRIES INC.**  
www.connectpositronic.com

FSC# 28198

DECIMAL TOL. ± 0.015 [0.38]					
TITLE RD STRIPS		SCALE N.T.S.		DRAWN BY YK	
DATE 12-20-05		DRAWING NUMBER RD25M00000/AA		APPROVED BY TK	
ANGULAR TOL. ± 5°				REV. A	