



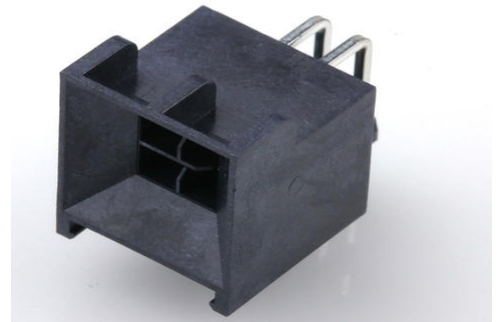
Part Number : [2196371306](#)

Product Description : Nano-Fit BMI Right-Angle Header, Through Hole, 2.50mm Pitch, Dual Row, 6 Circuits, 0.76µm Gold (Au) Plating, Black, Glow-Wire Capable, Tray

Series Number : 219637

Status : Active

Product Category : PCB Headers and Receptacles



Documents and Resources

Drawings

[2196371306 sd.pdf](#)

[2196371000-PK-000.pdf](#)

3D Models and Design Files

[STEP AP242](#)

[SOLIDWORKS](#)

[Creo](#)

Specifications


[AS-105300-100-001.pdf](#)

[2192681000-PS-000.pdf](#)

[2192682000-TS-000.pdf](#)

Product Environment Compliance

Compliance

GADSL/IMDS	Not Relevant
China RoHS	 per SJ/T 11365-2006
EU ELV	Not Relevant
Low-Halogen Status	Low-Halogen per IEC 61249-2-21
REACH SVHC	Not Contained per D(2025)6375-DC (05 Nov 2025)
EU RoHS	Compliant per EU 2015/863

Compliance Statements

- EU RoHS
- REACH SVHC
- Low-Halogen

Industry Documents

- IPC 1752A Class C
- IPC 1752A Class D
- Molex Product Compliance Declaration
- IEC-62474
- chemSHERPA (xml)

Substances of Interest

- PFAS

EU RoHS Certificate of Compliance

Additional Product Compliance Information

Part Details

General

Status	Active
Category	PCB Headers and Receptacles
Series	219637
Description	Nano-Fit BMI Right-Angle Header, Through Hole, 2.50mm Pitch, Dual Row, 6 Circuits, 0.76µm Gold (Au) Plating, Black, Glow-Wire Capable, Tray
Application	Power, Wire-to-Board
Component Type	PCB Header
Product Name	Nano-Fit BMI
UPC	196823409714

Agency

CSA	LR19980
UL	E29179

Electrical

Current - Maximum per Contact	5.0A
Voltage - Maximum	250V AC (RMS)/DC

Physical

Breakaway	No
Circuits (Loaded)	6
Circuits (maximum)	6
Color - Resin	Black
Durability (mating cycles max)	50
First Mate / Last Break	No
Flammability	94V-0
Glow-Wire Capable	Yes
Guide to Mating Part	Yes
Keying to Mating Part	Yes
Lock to Mating Part	Yes
Material - Metal	Brass
Material - Plating Mating	Gold
Material - Plating Termination	Tin
Material - Resin	Liquid Crystal Polymer
Net Weight	1.500/g
Number of Rows	2
Orientation	Right Angle
Packaging Type	Tray
PCB Locator	Yes
PCB Retention	Yes
PCB Thickness - Recommended	1.60mm, 2.40mm
PC Tail Length	3.20mm
Pitch - Mating Interface	2.50mm
Pitch - Termination Interface	2.50mm
Plating min - Mating	0.762µm
Plating min - Termination	1.524µm
Polarized to Mating Part	Yes
Polarized to PCB	Yes
Shrouded	Yes
Stackable	No
Temperature Range - Operating	-40° to +125°C
Termination Interface Style	Through Hole

Mates With / Use With

Mates with Part(s)

Description	Part Number
Nano-Fit BMI Receptacle Housing, 2.50mm Pitch, Dual Row, 6 Circuits, Black, Glow-Wire Capable	<u>2192681206</u>

This document was generated on Dec 16, 2025