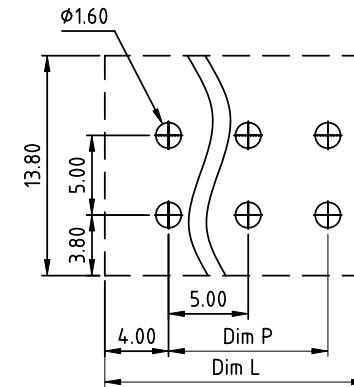
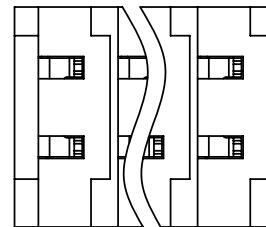
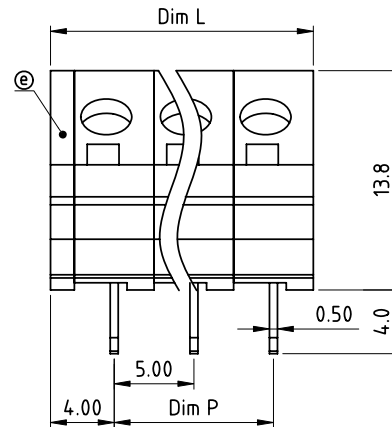
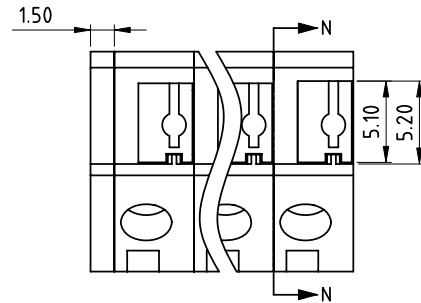
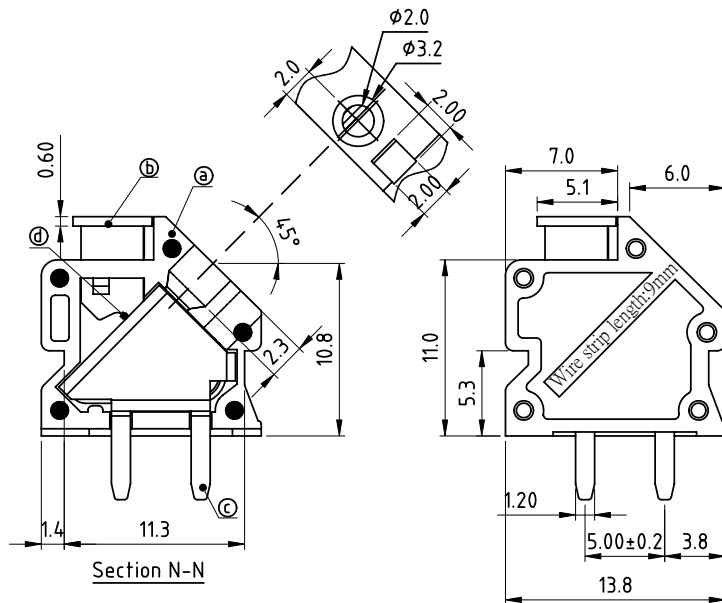


PRODUCT NUMBER	PITCH
NXxx00x000J0G	5.00mm



RECOMMENDED P.C.B LAYOUT
TOP VIEW

Material:

- Item⑥Insulating body:Thermoplastic (UL94V-0)
- Item⑦Insulating lever:Thermoplastic (UL94V-0) Grey RAL7004/P
- Item⑧Solder pin:Brass,Tin plated
- Item⑨Spring clamp:Stainless steel
- Item⑩Insulating cover:Thermoplastic (UL94V-0)

Electrical

- Voltage rating: 300VAC
- Current rating: 7A
- Wire range:
- Solid wire(AWG): 16-24
- Stranded wire(AWG): 16-24
- Wire strip length: 8-9mm
- Withstanding Voltage: 1.6KV
- Operating temperature: -40°C to +115°C
- Soldering temperature: 260°C±5°C/5 Sec
- Safety Approval:

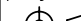


N=Number of poles

Dim L	$N \times 5.0 + 1.50$
Dim P	$(N-1) \times 5.0$

POLES	Dim L	Dim P
1p	± 0.10	\diagup
2p-6p	± 0.15	± 0.15
7p-12p	± 0.20	± 0.20
13p-18p	± 0.30	± 0.30
19p-24p	± 0.40	± 0.40

PART NO.: NX xx 00 x 000J0 G

No. of poles	0	Body Color	RoHS compliant
End Stackable	2	Black (RAL9005)	(lead<4%)
01 1 poles	3	Red (RAL3001/D)	In copper Alloy
02 2 poles	4	Orange(RAL2011/P)	
...	...	Yellow(RAL1018/A)	
24 24 poles	5	Green(RAL6018/T)	
	6	Blue (RAL5015/A)	
	8	Grey(RAL7004/P)	
	9	White(RAL1102)	
	C	Multiple colors	

mat'l. code				surface ASME Y14.5 ✓		tolerance ASME Y14.5		projection 		product family TERMINAL BLOCK													
ltr ecn no dr date				tolerances unless otherwise specified		 MM		title TERMINAL BLOCK SPRING CLAMP,45D WIRE INLET															
				angles				X.±0.5															
				X.X±0.3				X.XX±0.1															
				dr		EVIN ZHONG				dwg no										sheet 1 of 1		size	
				enrg		EVIN ZHONG				NXxx00x000J0G												A4	
				chr		HANKU PENG																	
				apdd		SHI JUN						type										CUSTOMER	
sheet index		revision		A		1																	