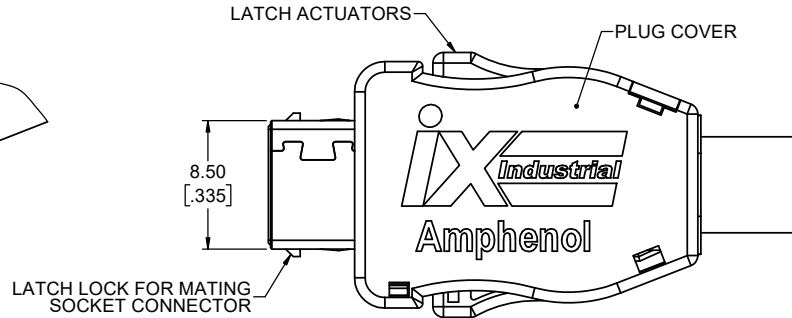
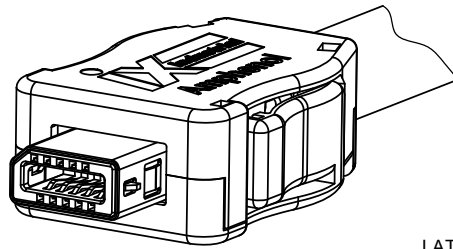
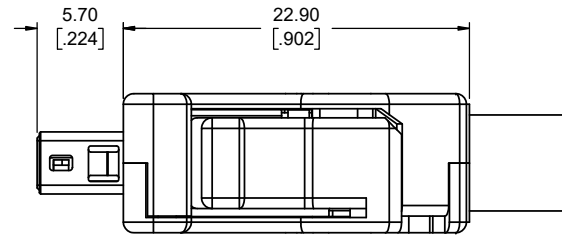
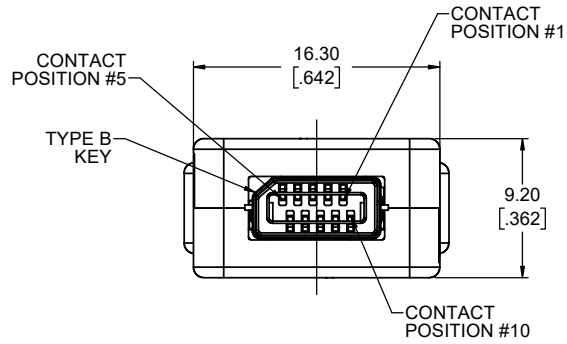


ASSEMBLED PLUG VIEWS
SEE SHEET 2 FOR COMPONENTS



ORDERING CODE: **ND9-BPXX-00XX**

SERIES, IX INDUSTRIAL
I/O APPLICATIONS

TYPE B KEY

PLUG

CONTACT TERMINATION

5 = SOLDER PAD

6 = IDC FOR 24-26 AWG WIRES

7 = IDC FOR 26-28 AWG WIRES

MATING AREA PLATING

1 = GOLD FLASH

2 = 0.2µm (8µ") GOLD

4 = 1.27µm (50µ") GOLD

7 = 0.76µm (30µ") PALLADIUM NICKEL
WITH GOLD FLASH

STANDARD

PACKAGING STYLE

NO DIGITS = STANDARD PACKAGING

SK = SINGLE KIT PACKAGING

CONNECTOR PIN ASSIGNMENT

POSITION NUMBER	WIRE COLOUR (PER DIN 47100)
1	WHITE
2	BROWN
3	GREEN
4	YELLOW
5	GREY
6	PINK
7	BLUE
8	RED
9	BLACK
10	VIOLET

NOTE:

TWISTED PAIRS FOR POSITIONS
1/2, 3/4, 5/6, 7/8 & 9/10 MAY BE PREFERRED.
COLOURS SHOWN AS AN EXAMPLE ONLY.
PIN FUNCTIONALITY & QUANTITY OF WIRES
TO BE DETERMINED BY CUSTOMER.

NOTES:

- MATERIAL: RoHS COMPLIANT PER EU DIRECTIVE 2011/65/EU AND AMENDMENTS.
 - SHIELDS: STAINLESS STEEL, NICKEL PLATED
 - INSERTS: GLASS REINFORCED ENGINEERING THERMOPLASTIC, UL 94V-0, BLACK
 - SIDE COVERS & IDC GUIDES: POLYCARBONATE UL 94V-0, COVER BLACK, GUIDES CLEAR (WITH YELLOW TINT FOR 24-26 AWG SIZE)
 - CONTACTS: PHOSPHOR BRONZE WITH MATING AREA PLATING PER ORDERING CODE AND MATTE TIN ON THE SOLDER OR IDC TERMINALS. OVERALL UNDERPLATING 1.27µm (50µ") MINIMUM NICKEL.
- DESIGNED TO CONFORM TO REQUIREMENTS OF IEC 61076 PART 3-124 SPECIFICATION. THE TYPE B KEY FEATURE SHOWN IS INTENDED FOR NON-ETHERNET I/O APPLICATIONS.
- CURRENT RATING: 1.5 AMPERES (1.25 AMPERE RATING IF PLUG TERMINATED WITH 28 AWG WIRE)
VOLTAGE RATING: 50V AC rms OR 60V DC
- OPERATING TEMPERATURE -55° TO +105°C.
- DIELECTRIC WITHSTANDING VOLTAGE: 500V DC
- CONTACT RESISTANCE: 30 MILLIOHMS MAXIMUM, INITIAL.
- INSULATION RESISTANCE: 500 MEGOHMS MINIMUM.
- MATING & UNMATING FORCE: 25N (5.6 lbf) MAXIMUM, LATCH EFFECTIVENESS 80N (18lbf) MIN.
- CUSTOMER TO CONFIRM THAT ANY PROCESS CLEANERS USED NEAR THE SIDE COVERS OR IDC GUIDES TO BE POLYCARBONATE COMPATIBLE.

RECOMMENDED CABLE SPECIFICATIONS

ITEMS		IDC 26 -28 AWG	IDC 24 - 26 AWG	SOLDER PAD
CONDUCTORS	SIZE	26 - 28 AWG	24 - 26 AWG	22 - 28 AWG
	STRANDS	7 STRANDS PER WIRE		-
	MATERIAL	ANNEALED COPPER WIRE		-
INSULATION OUTSIDE DIAMETER		Ø 0.95 - 1.05mm (Ø .037 - .041")	Ø 1.10 - 1.25mm (Ø .043 - .049")	Ø 1.55mm MAX (Ø .061" MAX)
BRAIDED SHIELD		TIN PLATED		
JACKET OUTSIDE DIAMETER		Ø 6.30 - 7.20mm (Ø .248 - .283")		



UNLESS SPECIFIED OTHERWISE	DRAWN	B.COPPING	DEC2/19
PRIMARY UNITS MILLIMETERS	CHECKED	K.LAMBIE	DEC2/19
SECONDARY INCHES	M.E. APP'D		
REFERENCE IN PARENTHESES	Q.A. APP'D		
GENERAL TOLERANCES	DWG APPR.		
1 DECIMAL PLACE	ENG. REL. NO.	EAR 14720	
2 DECIMAL PLACES ±0.15	REF.		
3 DECIMAL PLACES	THIRD ANGLE PROJECTION		
ANGULAR DEGREES			

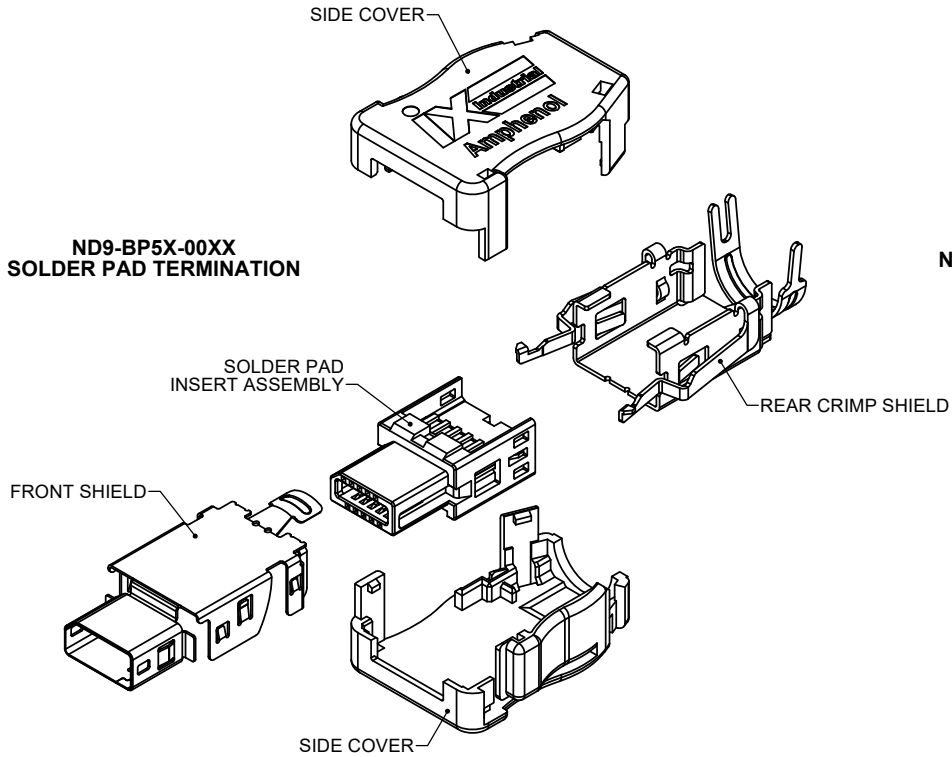
Amphenol Canada Corp.
Commercial Products

IX INDUSTRIAL I/O, TYPE B PLUG,
CABLE TERMINATION OPTIONS, RoHS
COMPLIANT

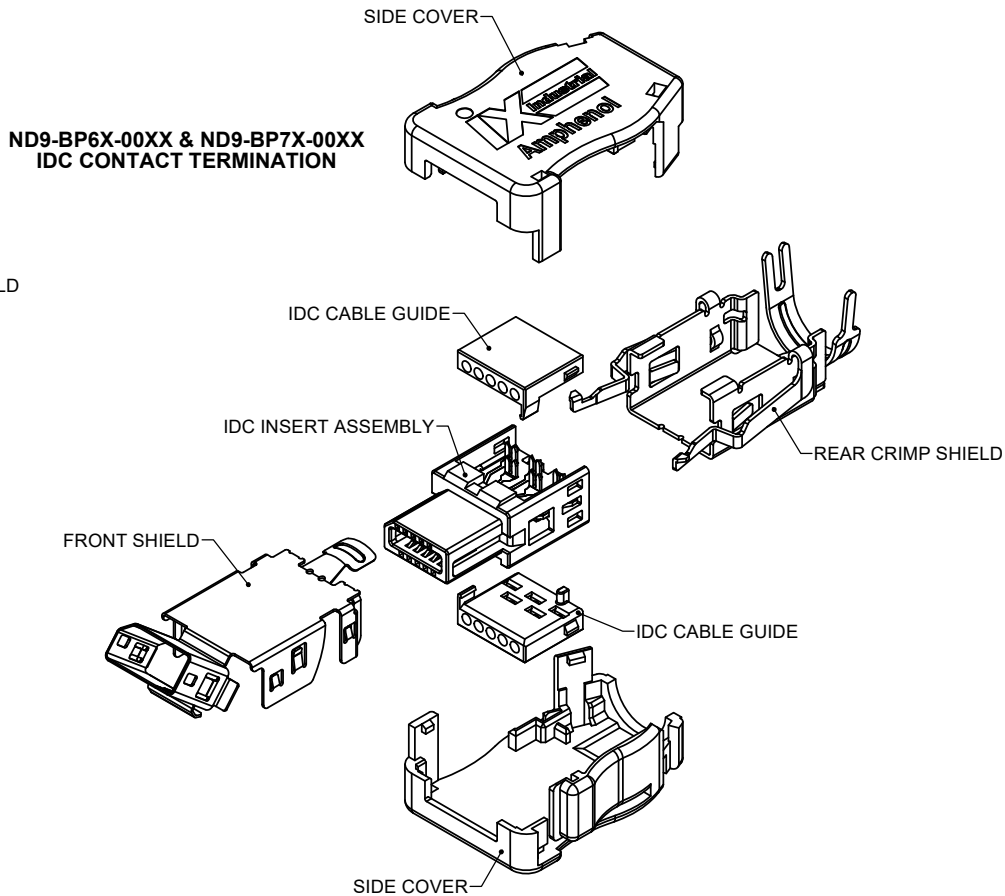
P-ND9-BPXX-00XX

CODE ID NO. 03554 DWG SIZE: X SCALE: 4:1 SHEET 1 OF 2

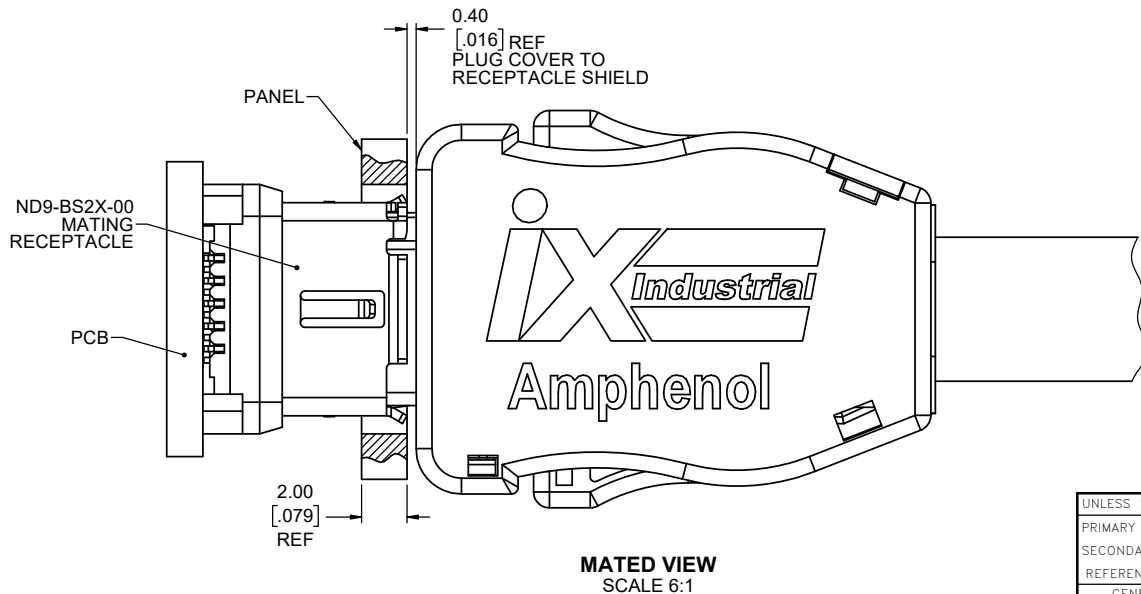
REVISIONS			
REV	DESCRIPTION, ECN, EAR NO.	DATE	APP'D
C	PRODUCT DRAWING (EAR 14912)	DEC1/20	K.L.
D	PRODUCT DRAWING (EAR 14912)	DEC2/20	K.L.



ND9-BP5X-00XX
SOLDER PAD TERMINATION



ND9-BP6X-00XX & ND9-BP7X-00XX
IDC CONTACT TERMINATION



MATED VIEW
SCALE 6:1



UNLESS SPECIFIED OTHERWISE	DRAWN	B.COPPING	DEC2/19
PRIMARY UNITS MILLIMETERS	CHECKED	K.LAMBIE	DEC2/19
SECONDARY INCHES	M.E. APP'D		
REFERENCE IN PARENTHESES	Q.A. APP'D		
GENERAL TOLERANCES	DWG APPR.		
1 DECIMAL PLACE	ENG. REL. NO.	EAR 14720	
2 DECIMAL PLACES ±0.15	REF.		
3 DECIMAL PLACES	THIRD ANGLE PROJECTION		
ANGULAR DEGREES			

Amphenol Canada Corp. Commercial Products			
IX INDUSTRIAL I/O, TYPE B PLUG, CABLE TERMINATION OPTIONS, RoHS COMPLIANT			
DWG. NO.	P-ND9-BPXX-00XX		REV D
CODE ID NO. 03554	DWG SIZE: X	SCALE: 3:1	SHEET 2 OF 2