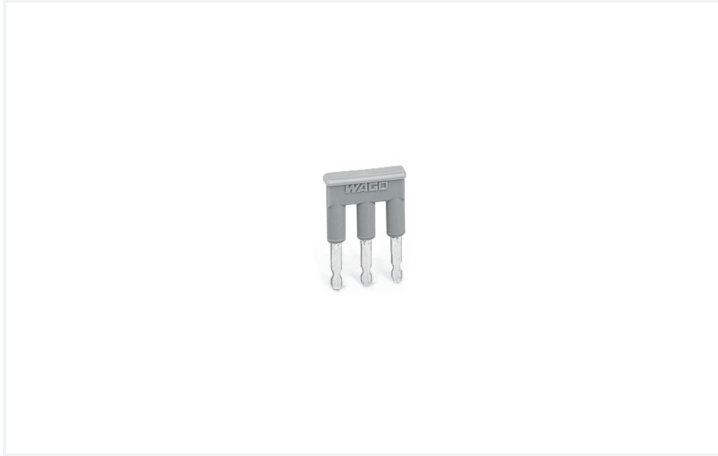


Data Sheet | Item Number: 280-484

Jumper; 4-way; insulated; gray

<https://www.wago.com/280-484>



Color: ■ gray

Similar to illustration

Electrical data

Ratings per IEC/EN

Rated current	24 A
---------------	------

Physical data

Width	20 mm / 0.787 inches
Height	4 mm / 0.157 inches
Depth	19.2 mm / 0.756 inches
Jumper assignment	1-2-3-4

Material data

Note (material data)	Information on material specifications can be found here
Color	gray
Fire load	0.011 MJ
Weight	1.9 g

Commercial data

PU (SPU)	200 (25) pcs
Packaging type	Box
Country of origin	DE
GTIN	4044918977104
Customs tariff number	85366990990

Product Classification

UNSPSC	39121421
eCl@ss 10.0	27-14-11-40
eCl@ss 9.0	27-14-11-40
ETIM 9.0	EC000489
ETIM 10.0	EC000489
ECCN	NO US CLASSIFICATION

Environmental Product Compliance

RoHS Compliance Status	Compliant, No Exemption
------------------------	-------------------------

Downloads

Environmental Product Compliance

Compliance Search

Environmental Product Compliance 280-484	↓
--	-------------------

Documentation

Bid Text

280-484	19.02.2019	xml 2.54 KB	↓
280-484	27.04.2017	doc 24.00 KB	↓

CAD/CAE-Data

CAD data

2D/3D Models 280-484	↓
----------------------	-------------------

CAE data

EPLAN Data Portal 280-484	↓
WSCAD Universe 280-484	↓
ZUKEN Portal 280-484	↓

1 Compatible Products

1.1 Optional Accessories

1.1.1 Tool

1.1.1.1 Operating tool

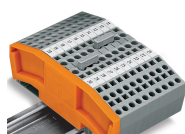


Item No.: 280-434

Operating tool; made of insulating material;
4-way; white

Installation Notes

Commoning



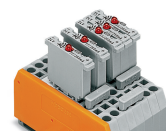
Commoning using comb-style jumper bars.
Push comb-style jumper bars down until fully
inserted.

Commoning



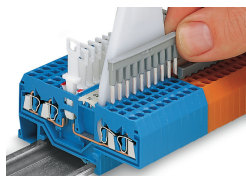
4-conductor through terminal blocks, angled
type,
formation of groups with 3-way, comb-style
jumper bars

Commoning



Carrier terminal blocks with component
plugs,
alternate comb-style jumper bars,
3-way comb-style jumper bar

Commoning



Commoning front-entry disconnect terminal blocks via comb-style jumper bar using a 10-pole operating tool