

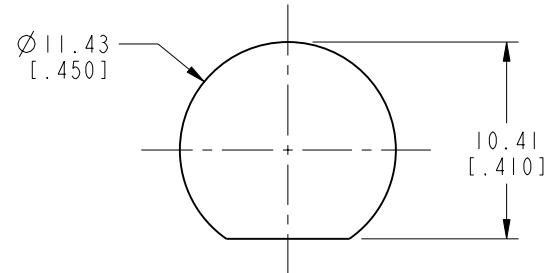
NOTES:

1. MATERIALS OF CONSTRUCTION:  
 LOCKWASHER & HEX NUT- BRASS, NICKEL PLATED  
 BODY - BRASS, GOLD PLATED OVER HIGH PHOSPHORUS CONTENT ELECTROLESS NICKEL  
 CONTACT - BeCu, GOLD PLATED OVER HIGH PHOSPHORUS CONTENT ELECTROLESS NICKEL  
 RETAINING RING & CAP - BRASS, NICKEL PLATED  
 INSULATORS - PTFE  
 GASKET - SILICONE RUBBER
2. ELECTRICAL:  
 A. IMPEDANCE: 50 OHM  
 B. FREQUENCY RANGE: DC TO 3GHz  
 C. VSWR: 1.2 MAX TO 3.0 GHz
3. MECHANICAL:  
 A. TEMPERATURE RANGE: -65° C TO +165° C  
 B. SEALING REQUIREMENTS: DESIGN WHEN MOUNTED ON PANEL MUST WITHSTAND WATER PRESSURE AT DEPTH OF 1 METER FOR 30 MIN. WITHOUT ANY SIGN OF LEAKAGE
4. PACKAGING:  
 A. QUANTITY: SINGLE PACK  
 B. MARKING: BAG TO BE MARKED "AMPHENOLRF, 31-6527, AND DATE CODE"

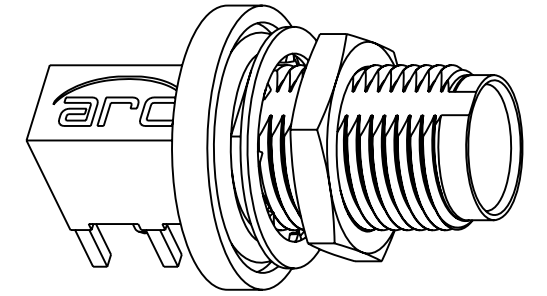
THIRD ANGLE PROJ.

REVISIONS

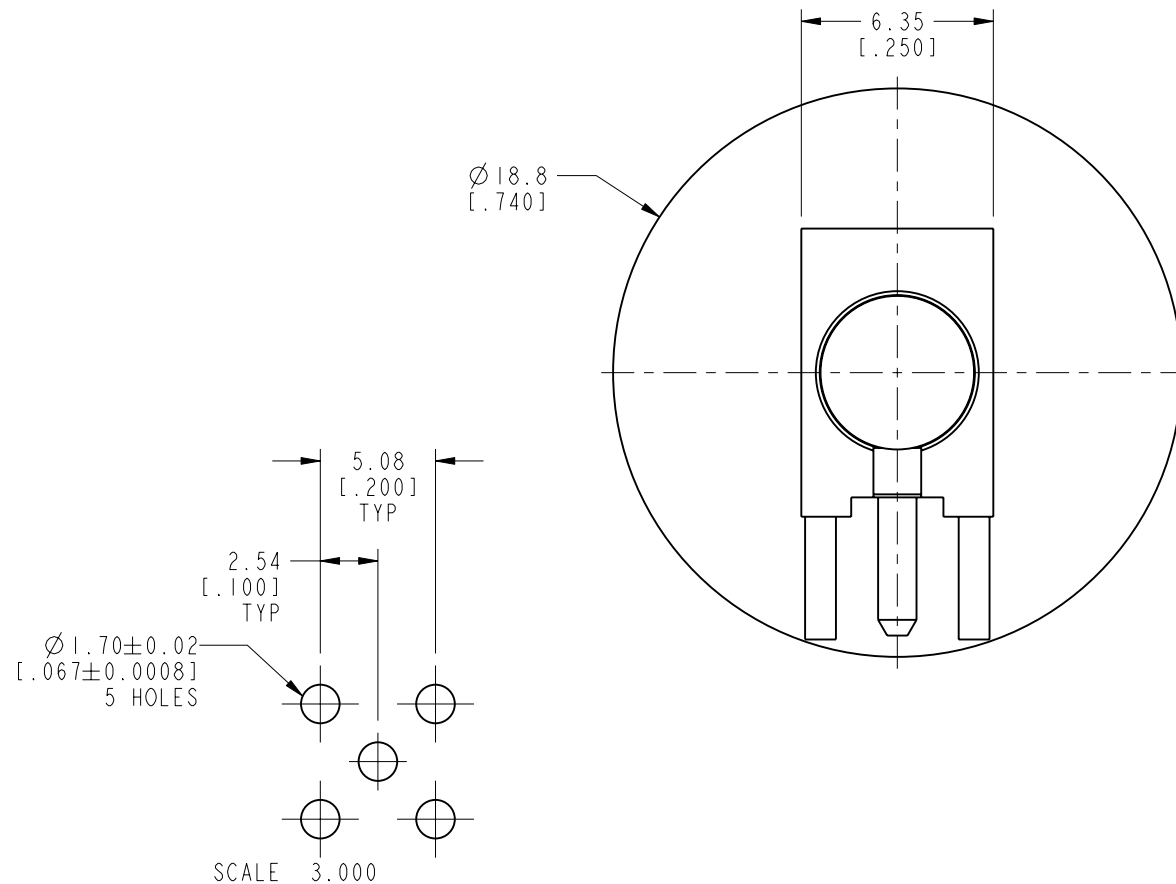
REV	DESCRIPTION	DATE	ECO	APPR
A	RELEASE TO MFG.	29-Mar-12	48962	DD
B	UPDATED VSWR SPEC	--	49475	DD
C	ADD ARC LOGO TO BODY	08-Oct-13	49619	RLB



**RECOMMENDED MOUNTING  
 PANEL DIMENSIONS**

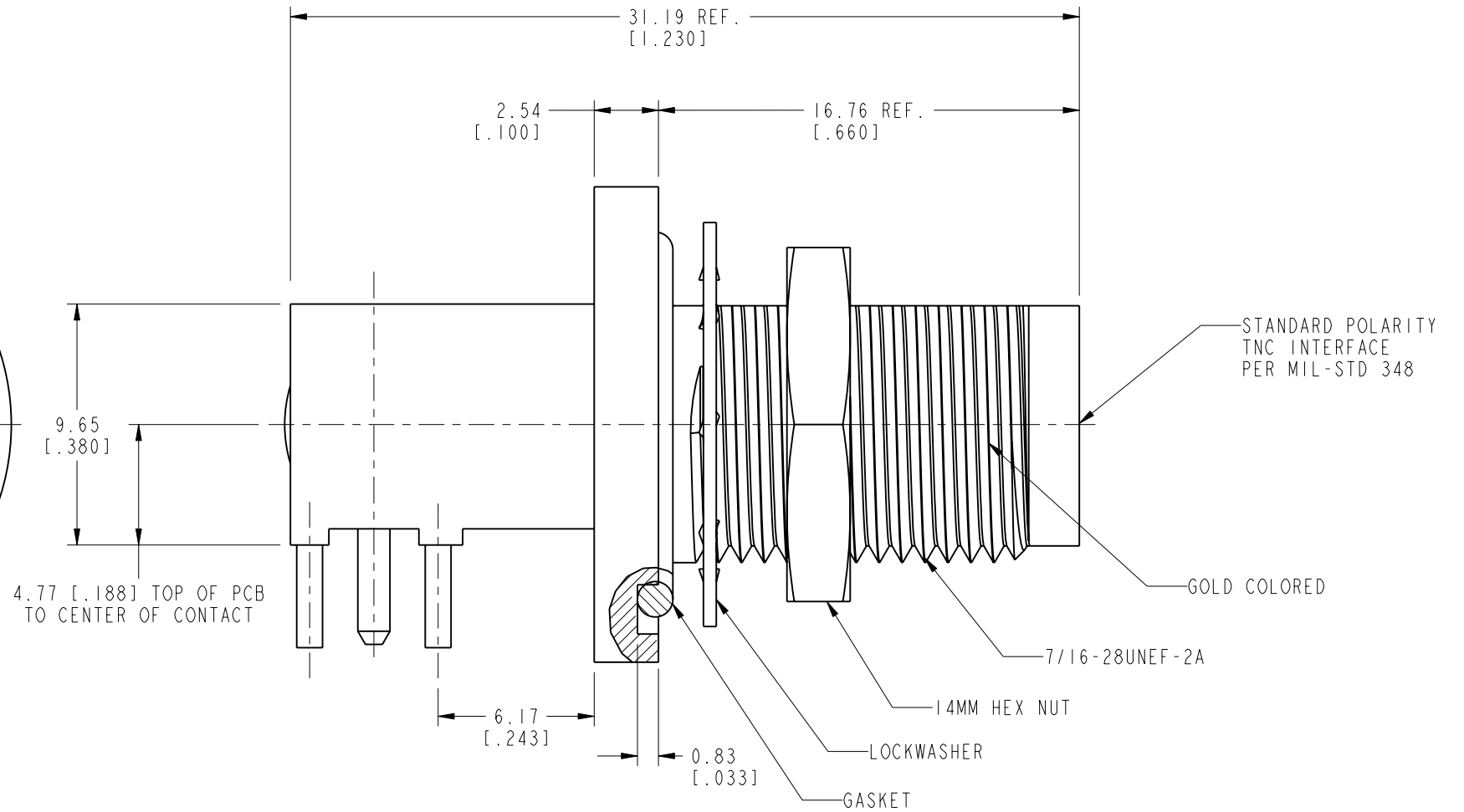


SCALE 2.000



**RECOMMENDED MOUNTING  
 HOLE DIMENSIONS**

SCALE 3.000



**CUSTOMER OUTLINE DRAWING**  
 ALL OTHER SHEETS ARE FOR INTERNAL USE ONLY

UNLESS OTHERWISE SPECIFIED, DIMENSIONS ARE IN METRIC AND TOLERANCES ARE: <0.5mm ±0.05mm    0.5 - 6mm ±0.1mm    6 - 30mm ±0.2mm    30 - 120mm ±0.3mm    ANGLES ±1°	MATERIAL SEE NOTES	DRAWN D. DAVE	DATE 30-Jan-12	TITLE TNC JACK (IP67) R/A BULKHEAD PCB MOUNT	Amphenol RF www.amphenolrf.com
		ENGINEER D. DAVE	DATE 30-Jan-12		
NOTICE - These drawings, specifications, or other data (1) are, and remain the property of Amphenol corp. (2) must be returned upon request; and (3) are confidential and not to be disclosed to any person other than those to whom they are given by Amphenol Corp. the furnishing of these drawings, specifications, or other data by Amphenol Corp., or to any other person to anyone for any purpose is not to be regarded by implication or otherwise in any manner licensing, granting rights to permitting such holder or any other person to manufacture, use or sell any product, process or design, patented or otherwise, that may in any way be related to or disclosed by said drawings, specifications, or other data.	REFERENCE EAR # 4007	APPROVED S. HSIEH	DATE 09-Oct-13	SCALE: 5.0:1.0 SHEET 2 OF 2	ITEM NO. 31-6527
	CONFIGURATION LEVEL: <input type="checkbox"/> <input type="checkbox"/> <input type="checkbox"/>	CAD FILE	DWG SIZE B	REV C	PART NO. 31-6527
	FINISH	FINISH	FINISH	FINISH	FINISH