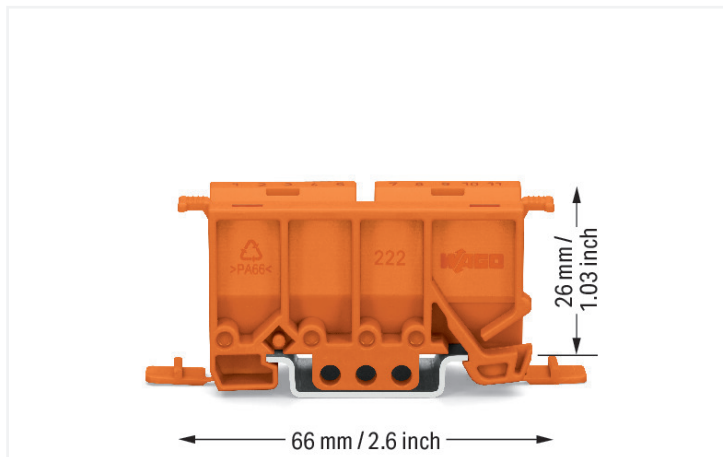


Data Sheet | Item Number: 222-500

Mounting carrier; 222 Series; for DIN-35 rail mounting/screw mounting; orange

<https://www.wago.com/222-500>



Color: ■ orange



Physical data

| | |
|-----------------------------------|------------------------|
| Width | 22 mm / 0.866 inches |
| Height | 65.6 mm / 2.583 inches |
| Depth from upper-edge of DIN-rail | 26 mm / 1.024 inches |
| Depth | 32 mm / 1.26 inches |

Mechanical data

| | |
|---------------|---|
| Mounting type | DIN-35 rail Screw mount |
| Suitable | for 2-, 3- and 5-conductor splicing connectors (222 Series) |

Material data

| | |
|------------------------------------|--|
| Note (material data) | Information on material specifications can be found here |
| Color | orange |
| Material group | I |
| Insulation material (main housing) | Polyamide (PA66) |
| Flammability class per UL94 | V0 |
| Fire load | 0.302 MJ |
| Weight | 11.2 g |

Commercial data

| | |
|-----------------------|---------------------|
| Product Group | 7 (Push Wire Conn.) |
| PU (SPU) | 50 (10) pcs |
| Packaging type | Box |
| Country of origin | CN |
| GTIN | 4045454714765 |
| Customs tariff number | 39269097900 |

Product Classification

| | |
|-------------|----------------------|
| UNSPSC | 39121702 |
| eCl@ss 10.0 | 27-14-11-92 |
| eCl@ss 9.0 | 27-14-11-92 |
| ETIM 9.0 | EC002848 |
| ETIM 10.0 | EC002848 |
| ECCN | NO US CLASSIFICATION |

Environmental Product Compliance

| | |
|------------------------|-------------------------|
| RoHS Compliance Status | Compliant, No Exemption |
|------------------------|-------------------------|

Downloads





Environmental Product Compliance

| | |
|--|-------------------|
| Compliance Search | |
| Environmental Product Compliance 222-500 | ↓ |

Documentation

| | | | |
|-----------------|------------|-----------------|-------------------|
| Bid Text | | | |
| 222-500 | 19.02.2019 | xml 2.73 KB | ↓ |
| 222-500 | 19.05.2017 | doc 23.50 KB | ↓ |

CAD/CAE-Data

| CAD data | CAE data |
|--|---|
| 2D/3D Models 222-500  | EPLAN Data Portal 222-500  |
| | WSCAD Universe 222-500  |
| | ZUKEN Portal 222-500  |

1 Compatible Products

1.1 Optional Accessories

1.1.1 Marking

1.1.1.1 Marking strip



Item No.: 210-834

Marking strips; on reel; 5 mm wide; plain; Self-adhesive; white

1.1.2 Mounting adapter

1.1.2.1 Mounting accessories



Item No.: 222-510

Angled DIN-rail adapter; in combination with mounting carrier; 221-500 or 222-500; for DIN-35 rail mounting; gray



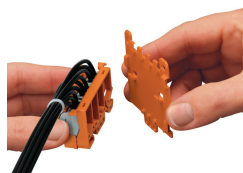
Item No.: 222-505

Strain relief plate; for mounting carrier; 221 or 222 Series, can be snapped

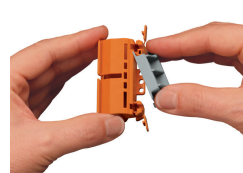
Installation Notes



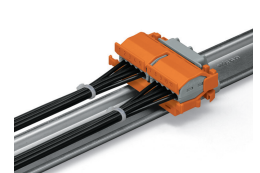
Snapping the lateral connector safety lock onto the mounting carrier.



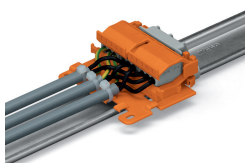
Securing a strain relief plate (222-505) to the mounting carrier.



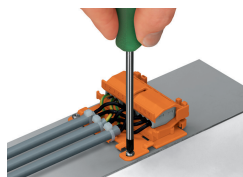
Snapping the angled DIN-rail adapter (222-510) onto the mounting carrier.



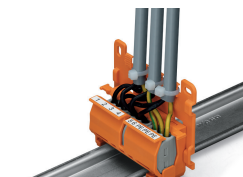
Horizontal mounting on DIN-35 rail using an angled DIN-rail adapter



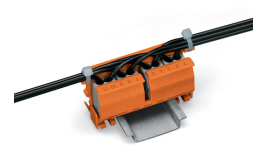
Horizontal mounting with strain relief plate on DIN-35 rail using an angled DIN-rail adapter



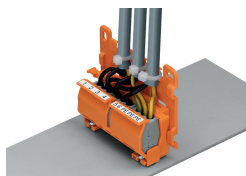
Horizontal screw mounting with strain relief plate on a flat surface



Vertical mounting with strain relief plate on DIN-35 rail; Marking clamping units via marking strips.



Strain relief via cable ties on the mounting carrier (transverse to the connectors' wiring direction); Molded marking clamping units



Mounting carrier with strain relief plate
mounted vertically on a plate.
Round cable secured via strain relief lug.