

RAFIX 22 FS⁺, illuminated pushbutton with protective cap, round collar, momentary contact function, frontring light gray, bezel red

Description

Illuminated pushbutton, with protective cap for use in more difficult environmental conditions.



technical data

> general		direct links
Disassembly possible	no	> RAFI eCatalog
Bezel color	red	
Property of bezel / mushroom	translucent	
Front ring color	light gray	
Collar shape	round	
Operating temperature, min.	-25 °C	
Operating temperature, max.	70 °C	
Storage temperature, min.	-40 °C	
Storage temperature, max.	80 °C	
illuminated	Yes	
Packaging	Box	
Packaging unit	10 pcs.	
Net weight	6.8 g	
Operating life	1,000,000 cycles	
B10	1,300,000 cycles	
Degree of protection, front side, according to DIN EN 60529	IP65	
Degree of protection, front side, according to ISO 20653	IP6K9K at 23°C water temperature	
Environment resistance	IEC 60068-2-14	
	IEC 60068-2-30	
	IEC 60068-2-33	
	IEC 60068-2-78	
Salt-spray resistance according to standard	IEC 60068-2-11	
Minimum order quantity (MOQ)	10 pcs.	
RoHS compliant	Yes	
REACH compliant	Yes	
Country of origin	HU	
> mounting diameters		
Outside dimension, length	29.8 mm	

Outside dimension, width	29.8 mm
Outside dimension, height	20.7 mm
Mounting hole	22.3 mm
Mounting depth	9.2 mm
Installation height	9.85 mm
Grid, min.	30 x 30 mm
Collar dimension	ø 29,8 mm

> mechanical data

Fixing	Threaded ring
Actuation function	momentary contact function
Operating force, max.	100 N
Operating travel, max.	4 mm
Threaded ring torque, max.	1.2 Nm

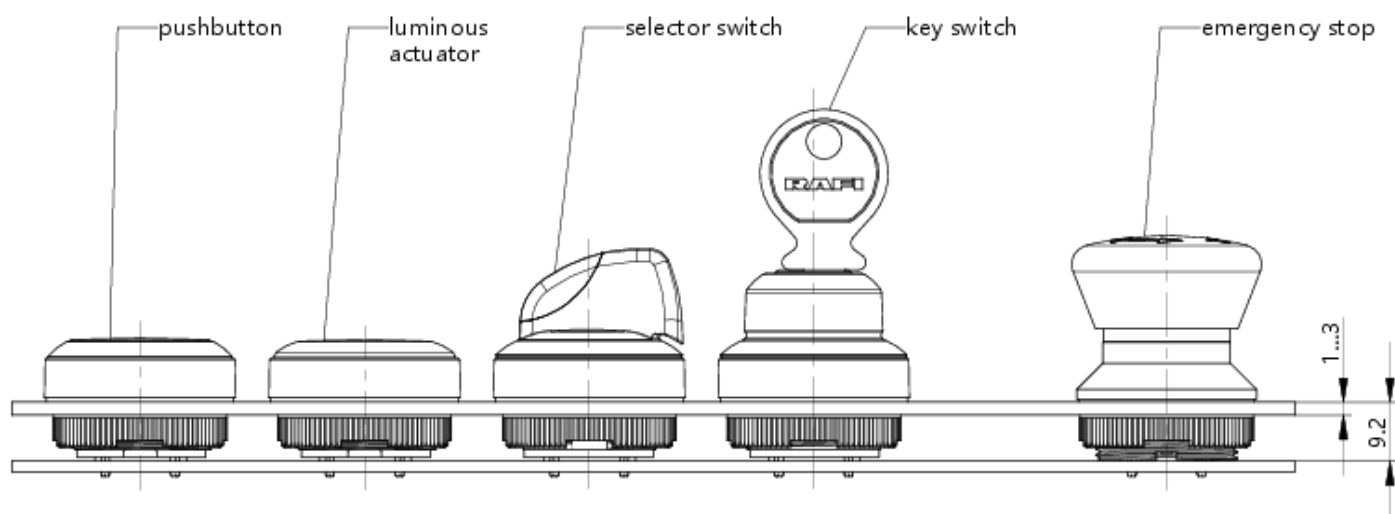
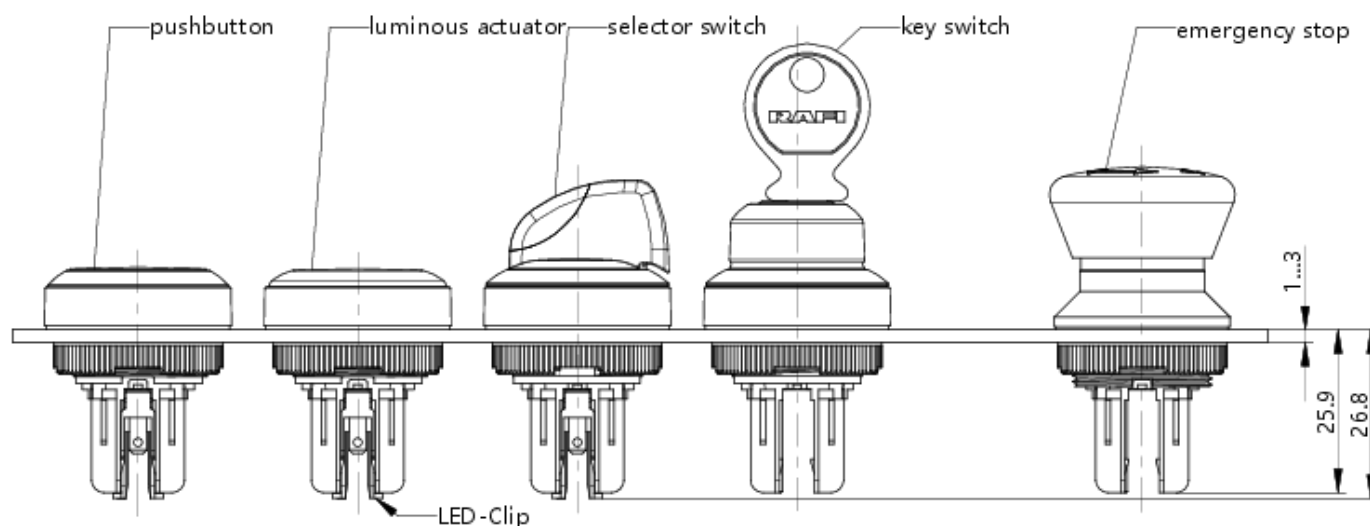
> Specifications according to UL 60947

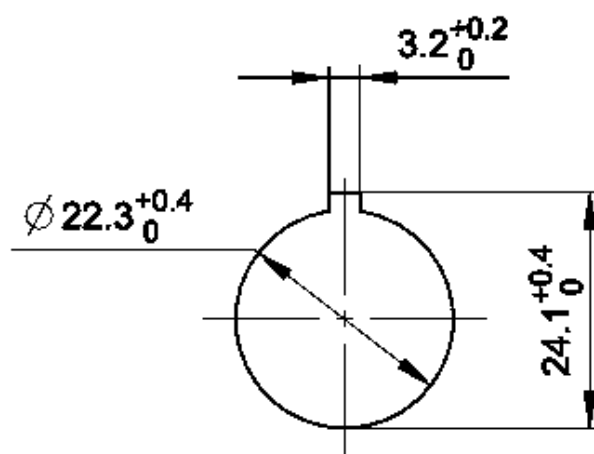
UL Enclosure Type Rating front	type 1
side	type 4X indoor

Use according to UL:

RAFIX control devices are defined at RAFI as modular elements, consisting of an actuating element, if necessary a coupling and an individual contact or lighting unit.

Actuating elements (such as pushbuttons, emergency stop actuators, etc.) have the intended tactility, reset and function only when assembled with the appropriate switching elements.

drawings**System drawing****System drawing**

Mounting hole drawing

acc. to IEC 60947-5-1

front panel drawing